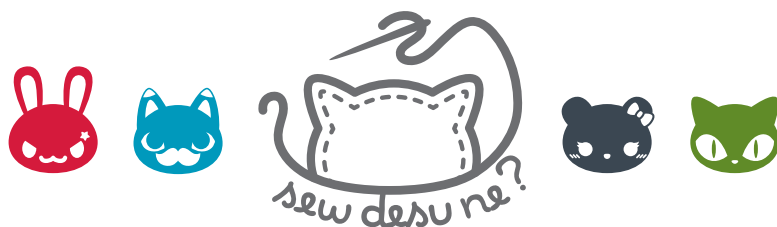


NIGHT & LIGHT FURY



CHIBI PLUSH BACKPACK

A FREE SEWING PATTERN BY



NIGHT & LIGHT FURY BACKPACK

Take your favorite dragon pal with you wherever you go with this fun backpack shaped just like Toothless! It has an extra chubby baby style body so there's plenty of storage inside. The templates include all of the fun features of a night or light fury like horns, spikes, tail fins, and tiny detailed wings.

With a large zippered pocket in the back of the head, you can hold most of your essentials, including a phone, wallet, and a few other items.

You also have your choice of easier non-adjustable straps or more time-consuming adjustable straps depending on how much effort you want to invest in the project.



sew desu ne?

| WWW.CHOLYKNIGHT.COM |

DIFFICULTY:

.....

This plush is a little difficult because it's also a backpack, but if you have a bit of experience with both it will be a good challenge. Knowledge of zippers helps a lot as well as sewing tiny pieces. Toothless has a lot of design elements so that can take some time. Also, if you're not familiar with bag hardware, it's best to stick with the non-adjustable straps. Doing the adjustable version might bump this project up to a 6 if it's completely new to you.

MAKES:

.....

One plush backpack: about 15" tall and 9" wide in the body (not including horns and legs). About 22" tall for full body including horns. Zippered pocket is 7½" wide and 12½" long.

SKILLS USED:

-
- Fusible web applique
 - Curved sewing
 - Basting
 - Zippers
 - Ladder stitch
 - Top stitching
 - Bag hardware
 - Interfacing

materials & tools:

-
- 2/3 yd. of 54" wide fabric for main body
 - one fat quarter of cotton fabric for inner lining
 - one 8" all-purpose zipper (at least)
 - **OPTIONAL, BUT HIGHLY RECOMMENDED:** 14" x 7" piece of lightweight fusible interfacing
 - **FOR TOOTHLESS:** 7" x 6" piece of red fabric for tail
 - 6" x 6" piece of green or blue applique fabric (such as cotton, felt, or flannel) for eyes
 - 3" x 3" piece of black applique fabric for pupils
 - 3" x 3" piece of white applique fabric for eye shines
 - sewing thread to match main fabric and applique fabrics
 - poly-fil stuffing
 - basic sewing tools (sewing machine, scissors, iron, needles, pins, fabric marker, seam ripper)
 - **FOR NON-ADJUSTABLE STRAPS:** 1½-2 yds. of 1"-1½" wide strapping/webbing material (see page 21 for exact measurements)
 - **FOR ADJUSTABLE STRAPS:** 2-3 yds. of 1"-1½" wide strapping/webbing material (see page 23 for exact measurements)
 - two tri-glides matching the width of your webbing
 - two rectangular rings matching the width of your webbing

sew desu ne?

| WWW.CHOLYKNIGHT.COM |



WEBBING/STRAPPING:

The name for a thick, ribbon-like material used for backpack straps. It comes in both cotton and polyester/nylon versions and varies between 1"-3" wide.

The polyester/nylon versions come in more colors. It has a large weave so it can fray easily after cutting. It can be purchased by the yard at fabric shops -- usually in the notions, with the elastic, or with the trims. Can also be found by the roll online.



TRI-GLIDES & RINGS:

Tri-glides are a type of bag hardware used for adjusting the length of straps. They can be found in either plastic or metal varieties. You can spot them by noting the 3 distinctive bars which give them their name.

For use in this project, they also need to be paired with rings, which are a more basic shape for looping strapping material. Rings can be circular, d-shaped, or rectangular (shown here).



SUGGESTED FABRICS:

Plush, stretchy fabrics such as fleece or minky are suggested. The variations of fleece and minky mentioned to the left would work well, but really any plushy fabric with a bit of stretch on the cross-wise grain would be well-suited.

Stretch fabrics like **FLEECE** or **MINKY** will create a more squat, round shape when stuffed.

Non-stretchy fabrics, like **FELT** or **COTTON**, won't stretch when stuffed so the resulting plush will look elongated as shown.

MINKY

VS.

FELT

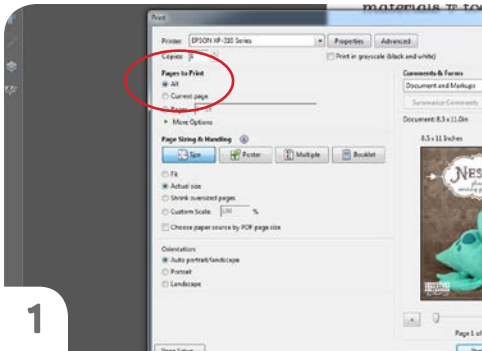


sew desu ne?

| WWW.CHOLYKNIGHT.COM |

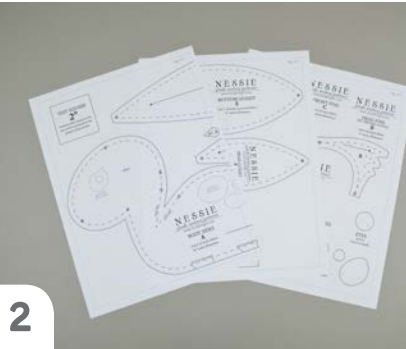
printing the pattern:

To print the pattern, set your computer to print **PAGES 32-40**. If you're unfamiliar with printing and assembling a .pdf pattern, read the steps below.



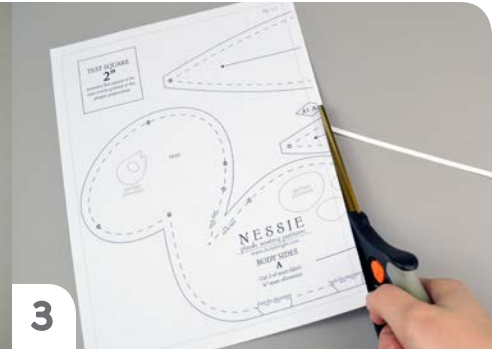
1

At the print dialog box, check the box that says print at "Actual Size" or 100%. Any other selection (such as "Fit to page") will distort the pattern so it's slightly larger or smaller and we don't want that.



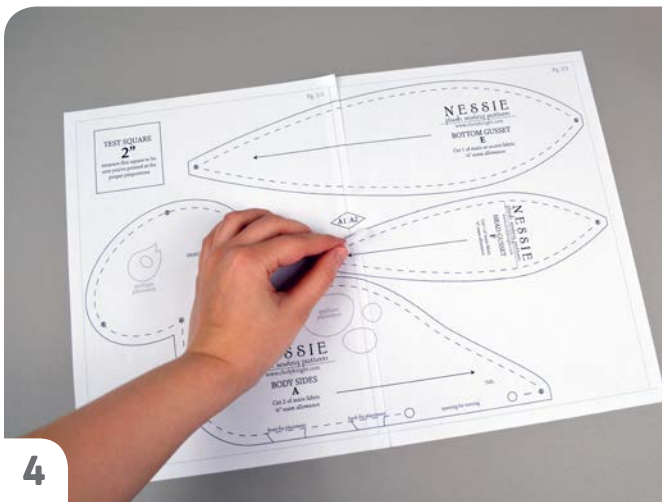
2

Print the pages needed for the file. You might have one or more. Either way, be sure you have the full collection by noting the page numbers in the corner.



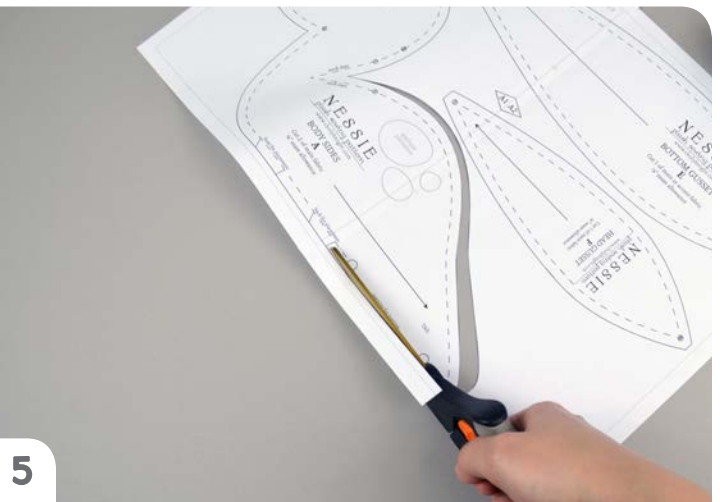
3

It's likely your printer will have a margin that ensures your image doesn't print to the very edge. Assembly will be easier if you trim off this blank margin edge. This will give you pages that overlap slightly during assembly. If you trim across the gray outline boxes, this will give you pages that don't overlap but rather butt against each other.



4

To line up the pattern pages, match up the corresponding diamond shapes. Each diamond will have a letter, so it's simply a matter of matching A1 to A2, B3 to B4 and so on. The faint gray lines indicate the border of every page, you should be able to line those up as well. When the diamond goes together, tape it in place. If you have many pages, it's easier to tape up the pages into rows first. Then tape the rows together into a full block.



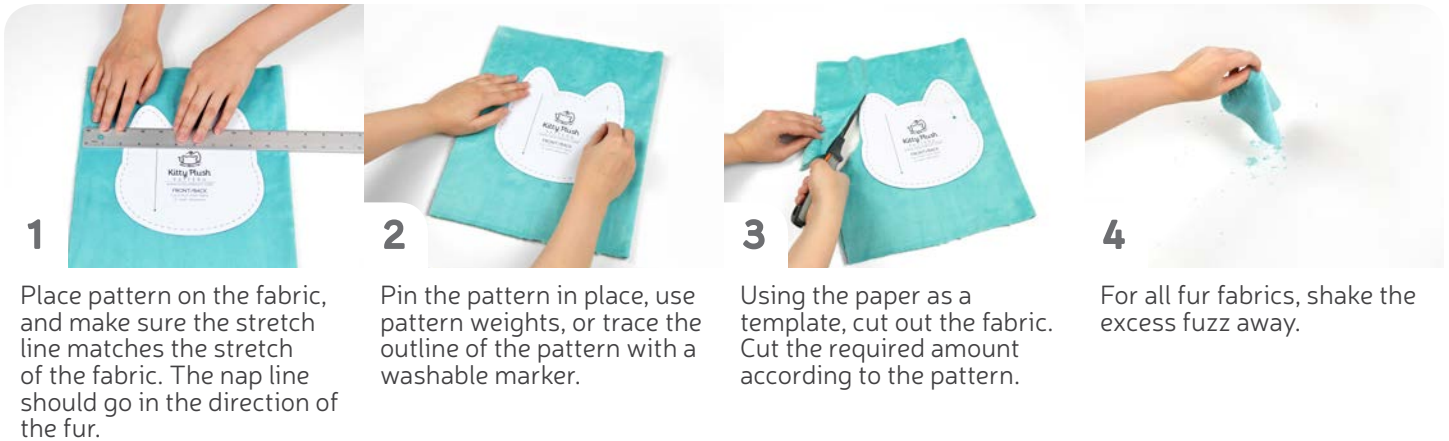
5

You can trace the patterns onto a different paper, or you can also just cut them straight from the printer paper -- be sure that each piece is fully taped together along the joins so they don't fall apart when you cut them.

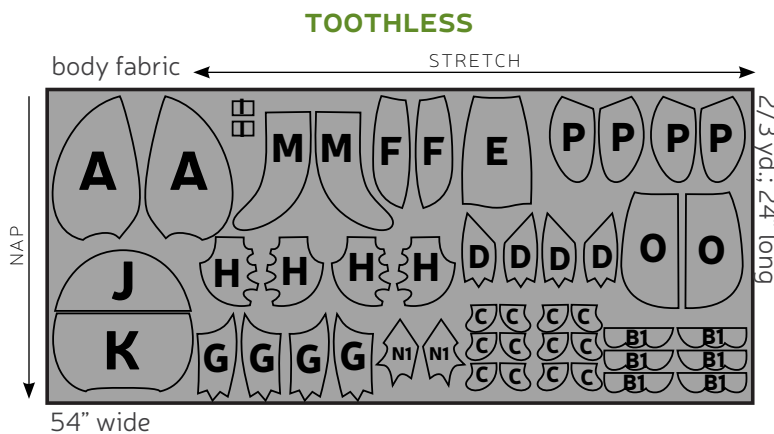
sew desu ne?

| WWW.CHOLYKNIGHT.COM |

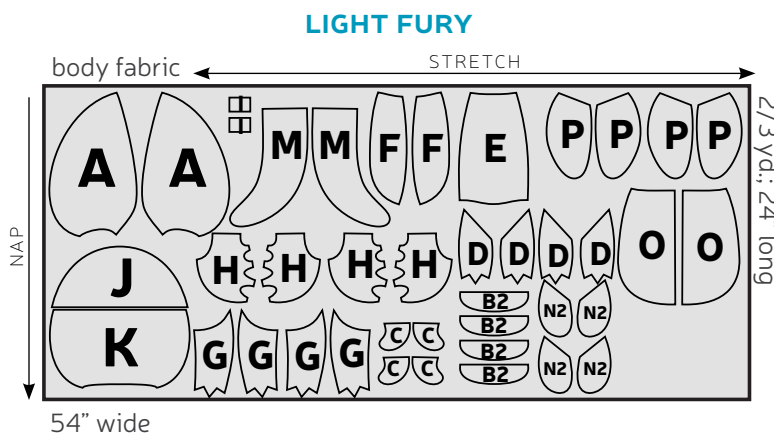
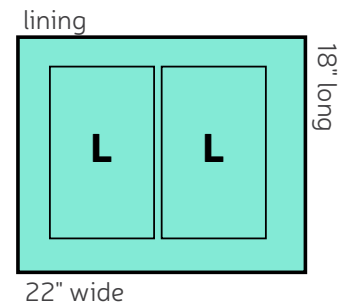
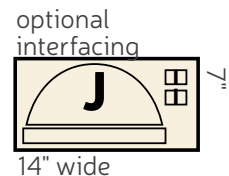
cutting the fabric:



cutting layout:



BOTH VERSIONS:

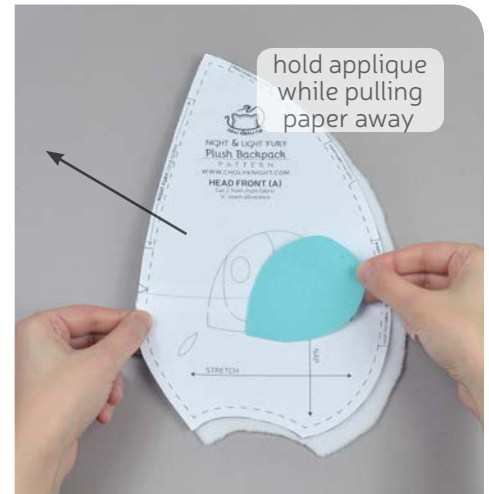


BEFORE YOU BEGIN:

- Briefly read the project instructions so you know what to expect.
- If desired, mark the cut fabric pieces with the markings and symbols from the pattern. Or wait until the applicable step before transferring.
- Note that the seam allowance used is 1/4" throughout the project.

sew desu ne?

| WWW.CHOLYKNIGHT.COM |



1. PREPARE THE FACE APPLIQUE

- Take your fusible web and trace all of your applique pieces onto the smooth (paper) side. You should have at least two eyes, two pupils, two eye shines, and two nostrils.
- Fuse the bumpy (adhesive) side onto the wrong side of your applique fabric. The eyes go on blue or green, the pupils and nostrils on black, and the eye shines on white.
- Cut out the eyes and arrange them on the **HEAD FRONT (A)** piece. Set your paper pattern on top of the fabric piece (right sides up). Align the eye piece on top where the placement markings are. Then carefully pull the paper pattern away while holding the applique piece in place.



2. FUSE THE APPLIQUE

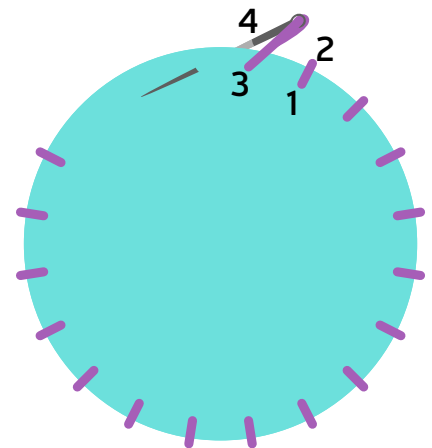
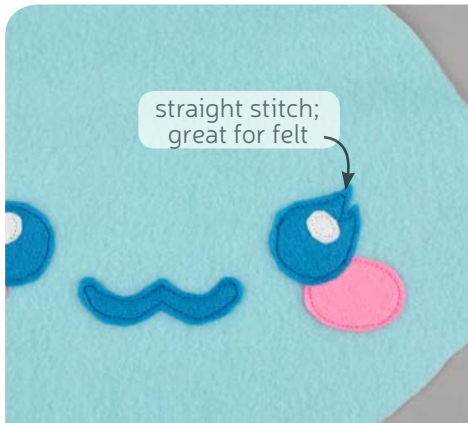
- Fuse the eyes in place with your iron (use a press cloth -- such as a scrap piece of cotton -- if you're using a polyester or fur fabric like minky).
- Next, move onto the pupil, nostril, and eye shine pieces. Fuse them much the same way as you did the eyes, using the paper pattern and photos as a guide. Repeat with the other eye and the other **HEAD FRONT** piece.
If you used heavy duty fusible web, you can keep the pieces fused without sewing, or you can sew them in place a number of ways. I've used a zigzag stitch here.

→ Refer to the next step for some other applique options.

- If you're making Toothless, take this time to fuse the skull to his **TAIL FIN** pieces (N1) with the same process.

sew desu ne?

| WWW.CHOLYKNIGHT.COM |



2a. OTHER APPLIQUE OPTIONS

- Other good options for applique include a straight stitch, which involves sewing around the edge of the applique pieces with a straight stitch using matching thread -- about 1/8" in from the edge.
- You can also applique by hand; I prefer a whipstitch. Thread a hand-sewing needle with some matching thread and knot it. Bring the thread up from the back of the project; about 1/8" in from the edge of the applique shape. Bring it down perpendicular from the curve, just outside of the applique shape. This completes one stitch.
- For the next stitch, bring the needle back up about 1/8" away from the previous stitch and 1/8" in from the edge just as in the first stitch. Once again, bring it down just outside the applique shape. Continue this way until you've sewn around the shape.



3. SEW THE LONG SPIKES

- Grab your **LONG SPIKE/BACK FIN** pieces (B1/2). Take two of them and align them with right sides facing and raw edges matching up. Sew them together along the long curved edge. Leave the straight edge free for turning it right side out.
- FOR THE NIGHT FURY SPIKES:** trim the excess seam allowance at the inner corners to increase flexibility.
- Turn the pieces right side out. When complete, you should have 2 light fury fins or 3 night fury spikes.



sew desu ne?

| WWW.CHOLYKNIGHT.COM |



4. BASTE THE FOREHEAD SPIKES

- a. IF YOU'RE MAKING TOOTHLESS:** grab one of your **LONG SPIKES (B1)** from back in step 3. If you haven't already, locate the **spike placement lines** found on the paper pattern for the **HEAD FRONT (A)**. Place the open end of the spikes within these lines so the edges match up. Make sure the spikes are pointing up.
- b.** Baste the spikes to the head within the seam allowance to hold it for future steps.



- a.** Grab your remaining **HEAD FRONT** piece (A). Align it over the first with right sides facing and raw edges matching.
- b.** Sew the head front pieces together along the **notched edge** (with the nose point).

5. SEW THE HEAD FRONT

sew desu ne?

| WWW.CHOLYKNIGHT.COM |

- a.** Grab your **TINY SPIKE** pieces (C). Take two of them and align them with right sides facing and raw edges matching up.
- b.** Sew them together along the long curved edge. Leave the short straight edge free for turning right side out.
- c.** Turn the spike right side out.
FOR A LIGHT FURY: repeat parts A and B for 2 finished spikes total.
- d. FOR A NIGHT FURY:** repeat parts A and B for 6 finished spikes total.

6. SEW THE TINY SPIKES



7. BASTE THE TINY SPIKES

- a.** Open up your **HEAD FRONT** pieces (A). If you haven't already, locate the **tiny spike placement lines** found on the paper pattern around the outside of the head. Place the open end of your tiny spikes within these placement lines so the edges match up and the spikes point toward the center of the head.
- b.** Baste the spikes to the head front within the seam allowance to hold them for future steps.
FOR A NIGHT FURY: note that you'll have 6 spikes; 3 on each side.

sew desu ne?

| WWW.CHOLYKNIGHT.COM |

- a.** Grab your **ARM** pieces (D). Take two of them and align them with right sides facing and raw edges matching up.
- b.** Sew the arm along the pointed 'claw' edge. Leave the slanted edge free for turning it right side out later.
- c.** Trim the excess seam allowance at the inner and outer corners of the claws to increase flexibility and decrease bulk when the arms are turned next.
- d.** Turn the arm right side out and repeat with the remaining arm pieces for two arms total.

8. SEW THE ARMS



9. BASTE THE ARMS



- a.** Stuff the **ARMS** lightly with stuffing. Keep it especially light at the opening, as we'll be sewing it to the belly next.
- b.** Grab your **BELLY** piece (E). If you haven't already, locate the **arm placement lines** found on the paper pattern. Transfer them over to the right side of the fabric. Align the open end of the arm within the lines. Match up the raw edges and have the arm point down.
- c.** Baste the both arms to the belly within the seam allowance to hold it securely for the next step.

sew desu ne?

| WWW.CHOLYKNIGHT.COM |

- a. Grab your **SIDE** pieces (F). If you haven't already, note the **notch markings** found on both the **BELLY** and side paper patterns. These edges will be sewn together next.
- b. Flip the side so the **notched edge** matches with the belly and right sides are facing. Pin the fabrics together.
- c. Sew the side to the belly along this **notched edge**. Repeat with the other side piece.
- d. When complete, open up the front so far. The arms should be securely sewn between the belly and side.



11. SEW THE LEGS

- a. Grab your **LEG** pieces (G). Take two of them and align them with right sides facing and raw edges matching up.
- b. Sew the leg along the pointed 'claw' edge. Leave the slanted edge free for turning it right side out later.
- c. Trim the excess seam allowance at the inner and outer corners of the claws to increase flexibility and decrease bulk when the legs are turned next.
Turn the leg right side out and repeat with the remaining leg pieces for two legs total.



sew desu ne?

| WWW.CHOLYKNIGHT.COM |



12. BASTE THE LEGS



- Stuff the **LEGS** lightly with stuffing. Keep it especially light at the opening, as we'll be sewing it to the belly next.
- Grab your front piece so far. If you haven't already, locate the **leg placement lines** found on the paper pattern for both the **BELLY** (E) and the **SIDE** (F). Transfer them over to the right side of the fabric. Align the open end of the leg within the lines. They should be about centered over the belly seam. Flip the legs inward so the open edges match up with the raw edges of the body.
- Baste the leg to the body within the seam allowance to hold it securely for the next step. Note that the legs point inward when basted so they'll point straight down when flipped later.



13. SEW THE WINGS



- Grab your **WING** pieces (H). Take two of them and align them with right sides facing and raw edges matching up.
- Sew them together along the long pointed edge. Leave the short straight edge free for turning the wing right side out later.
- Trim the excess seam allowance near the tight corners and curves. This will decrease bulk and increase flexibility when the wing is turned later.

sew desu ne?

| WWW.CHOLYKNIGHT.COM |



14. TOP STITCH THE WINGS

- Turn the **WING** right side out and repeat step 13 with the remaining wing pieces for two complete wings total.
- The wings have some extra **top stitching lines** for depth and stability. To transfer them over, use the paper pattern as a tracing template. Trim the paper along the stitching lines and trace them onto the fabric.
- Stitch along the traced lines to complete the top stitching.

top stitching:

one or several lines of stitching done on the right side of a project to serve a decorative purpose



15. BASTE THE WINGS

- This step is especially helpful for extra wing stability, though it might be troublesome without hemostats. You can skip this part but your wings might flop down when complete. Stuff the upper edge of the **WING** you've just top stitched with stuffing. Stuff it enough so the wing is rigid along the upper edge.
- Grab your body piece so far. If you haven't already, locate the **wing placement lines** found on the paper pattern for the **SIDE (F)**. Align the open end of the wing within these lines so the raw edges match up and the tips of the wings point down.
- Flip the wings to the inside and baste the edges within the seam allowance to hold it for future steps.

sew desu ne?

| WWW.CHOLYKNIGHT.COM |

- a. Grab your **HEAD FRONT (A)** and body piece so far. The curved edges at the bottom of the head and the top of the body will be sewn together next as the neck.
 - b. Flip the head so the neck edge lines up with the body. Pin the fabrics together.
 - c. Sew the head to the body along the neck edge.
 - d. Open up the pieces when complete.
- CONGRATS!** You just completed the front half of the dragon. Next up is the back half, so now would be a great time for a break.

16. SEW THE FRONT NECK EDGE



17. FUSE THE INTERFACING

- a. If you have fusible interfacing, take this opportunity to fuse it to your fabrics. Follow the manufacturer's instructions to secure it to the wrong side of your fabric. First, fuse it to the wrong side of your **HEAD BACK (TOP)** piece (J).
- b. Take a 2" strip of the interfacing and fuse it against the straight edge of your **HEAD BACK (BOTTOM)** piece (K).
- c. And lastly fuse two bits to the back of your **ZIPPER TAB** pieces (I).

sew desu ne?

| WWW.CHOLYKNIGHT.COM |



18. SEW THE ZIPPER TABS

- a. If you have a longer zipper, take this opportunity to trim the ends of it so it matches the short side of your **LINING POCKET** (L). Make sure not to accidentally cut off the zipper slider.
- b. Take one of your **ZIPPER TABS** (I) and align the short end with the cut end of your zipper.
- c. Sew the tab to the zipper along this edge. Sew very slowly and carefully over the zipper teeth (use just the hand wheel if necessary to avoid a broken or bent needle). Repeat with the other zipper tab on the other side of the zipper.
When complete, press the tabs away from the zipper.

- a. Grab your **HEAD BACK BOTTOM** piece (K) and your zipper with **TABS** (I) attached. Align the zipper (right side down) over the straight edge of the head bottom so the edge of the tape matches up and the right sides are facing.
- b. Baste the zipper to the head bottom within the seam allowance to hold it securely for the next step.
- c. Align the **LINING POCKET** (L) over the zipper tape edge as well. Center it over the zipper.
- d. Sew the lining to the zipper with a regular $\frac{1}{4}$ " seam allowance. Sew through all three layers to secure the zipper inside.

19. SEW THE ZIPPER TO THE HEAD BOTTOM



sew desu ne?

| WWW.CHOLYKNIGHT.COM |



20. SEW THE HEAD TOP TO THE ZIPPER

- Flip your **HEAD BACK BOTTOM** (K) so the right sides are facing out and the other side of the zipper is exposed.
Grab your **HEAD BACK TOP** piece (J). We'll be sewing this to the other side of the zipper next.
- Layer the straight edge of the head top over the zipper with right sides facing. Line up the edges.
- Baste the head back top to the zipper along this edge, similar to back in step 19.

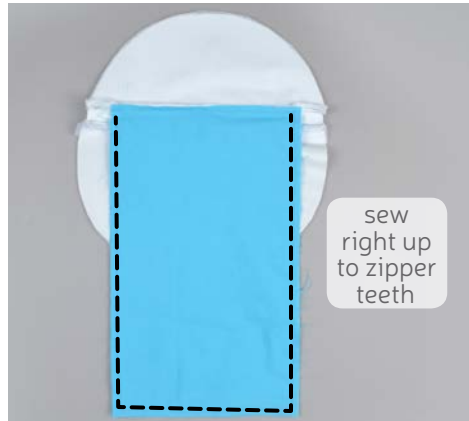
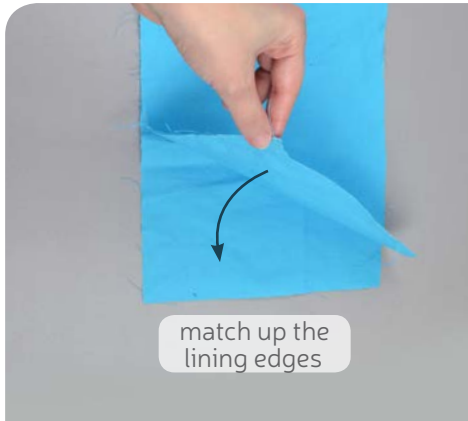
- Flip the head over so you can see the back side of the zipper.
- Take your remaining **LINING POCKET** piece (L) and align a short end along the zipper edge, just like before in step 19.
- Sew the lining to the zipper with the regular $\frac{1}{4}$ " seam allowance through all 3 layers.
- When complete, press the lining fabric away from the zipper for a crisp edge.

21. SEW THE REMAINING LINING



sew desu ne?

| WWW.CHOLYKNIGHT.COM |



- a. Lastly, match up the lining pocket pieces so the raw edges align.
- b. Sew the **LINING POCKET** pieces together along the sides and bottom. Get as close as possible to the zipper without actually sewing over it. Back stitch several times near the zipper for extra strength. This completes the head back!

22. SEW THE LINING POCKET

→ Up next is the body back!

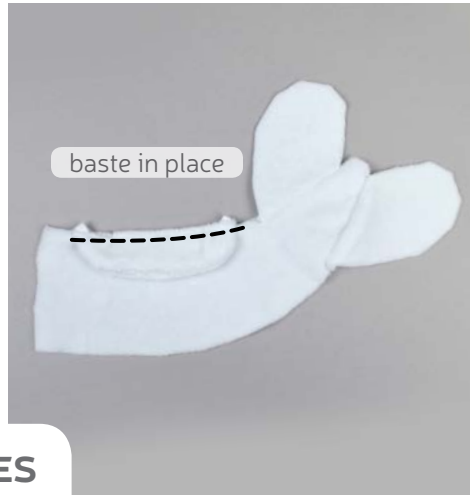
- a. Grab your **TAIL** (M) and **TAIL FIN** pieces (N1/2). If you haven't already, locate the **tail fin placement lines** found on the paper pattern for the tail. Transfer them over to the right side of the fabric. Align the slanted edges of the fin within these lines against the edge of the tail.
- b. Baste the fins to the tail within the seam allowance. Repeat on the other side of the tail with another tail fin. Make sure the tips are pointing away from the tail.
- c. Repeat with the other tail piece and the remaining tail fin pieces so you have both halves of the tail.

23. SEW THE TAIL FINS



sew desu ne?

| WWW.CHOLYKNIGHT.COM |



24. SEW THE TAIL SPIKES

- Grab one of your **LONG SPIKE/BACK FIN** pieces (B1/2). If you haven't already, locate the **spike placement lines** found on the paper pattern for the **TAIL** (M). Transfer them over to the right side of the fabric. Align the open end of the spike within these lines so the edges match up.
- Baste the spike to the tail within the seam allowance to hold it securely for the next step.

- Grab your remaining **TAIL** piece (M) with **TAIL FINS** attached (N1/2). Take them both and align them with right sides facing and raw edges aligning.
- Sew the tail pieces together along the long curved edge, going around each tail fin. Leave the straight edge free for turning the tail later.
- Clip the seam allowances at the inner corners and curves found beside the tail fins.
- Turn the tail right side out and top stitch in the seam between the tail fin and the tail, going through all the layers.

25. SEW THE TAIL



sew desu ne?

| WWW.CHOLYKNIGHT.COM |



26. BASTE THE TAIL



- a. Stuff the **TAIL** lightly with stuffing. Don't go too full here, as the tail will be against your back when wearing the backpack and you don't want it to be too bulky. Keep most of the stuffing in the tip.
- b. Grab one of your **BODY BACK** pieces (O). If you haven't already, locate the **spike** and **tail placement lines** found on the paper pattern. Transfer them over to the right side of the fabric. Grab one last **SPIKE** piece (B1/2) and align the open end along the straight edge of the body back, within the **placement lines** so the edges match up. Align the open end of the **TAIL** (M) right below it, also between the **placement lines**. The tip of the tail should point up.
- c. Baste the spikes and tail to the body back to hold them securely for the next step.



27. SEW THE BODY BACK

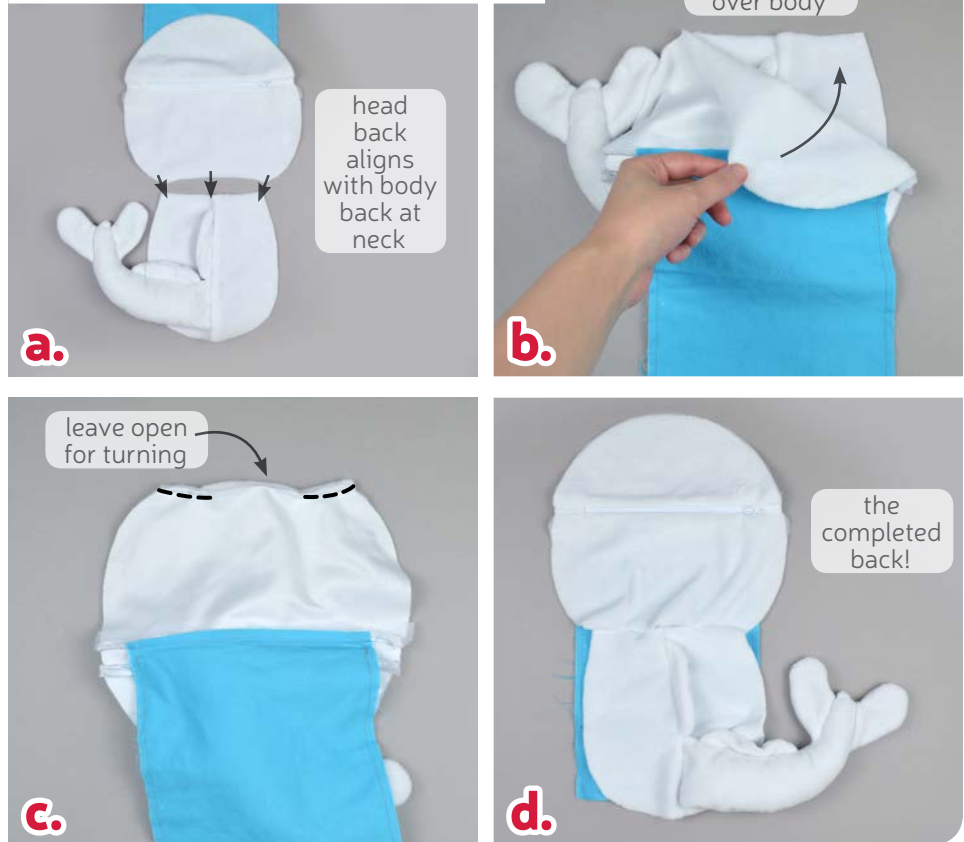
- a. Grab your remaining **BODY BACK** piece (O). Layer it over the first so right sides are facing and the raw edges match up.
- b. Sew the body back pieces together along the straight edge (with the spikes and tail attached).
- c. Open up the back pieces when complete. The spikes and tail should be fully secured inside the seam.

sew desu ne?

| WWW.CHOLYKNIGHT.COM |

- a. Grab your **HEAD BACK** (J&K) and body piece so far. The curved edges at the bottom of the head and the top of the body will be sewn together next as the neck.
- b. Flip the head so the neck edge lines up with the body. Pin the fabrics together.
- c. If you haven't already, locate the **opening for turning markings** found on the paper pattern for the **HEAD BOTTOM** (K). Transfer them over to the wrong side of the fabric. Sew the head to the body along the neck edge, but leave an opening where you marked.
- d. Open up the pieces when complete. Next up is to add the straps!

28. SEW THE BACK NECK



STEPS 29-31: NON-ADJUSTABLE STRAPS

The next 3 steps go over how to make non-adjustable straps. It's a lot easier and faster than the adjustable version. But if you'd like to try making adjustable straps, skip ahead to step 32.

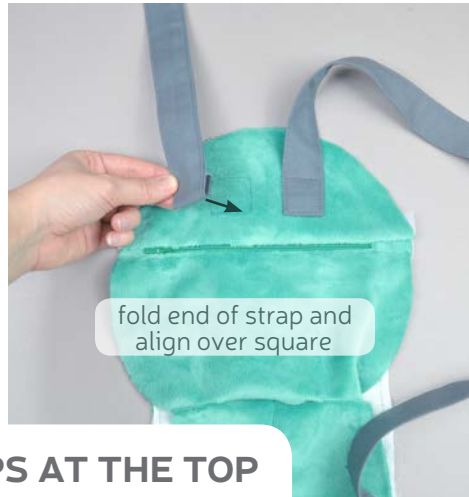
29. CUT THE STRAPS

- Grab your webbing/strapping material. Cut two straps from it using the chart as a guide for the length.
- Since the straps are not adjustable, it's difficult to predict the exact size, so it's highly recommended that you test the fit before moving past step 31.
- If you or the recipient are larger than the average person of the suggested height, consider going a size up.

APPROXIMATE SIZE	HEIGHT	STRAP LENGTH (CUT 2)
CHILD	50"-60"	26"
TEENAGER/ SMALL ADULT	60"-64"	30"
MEDIUM ADULT	65"-69"	34"
LARGE ADULT	70"-75"	38"

sew desu ne?

| WWW.CHOLYKNIGHT.COM |

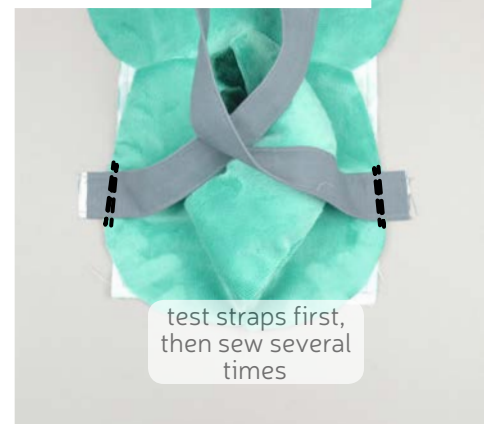
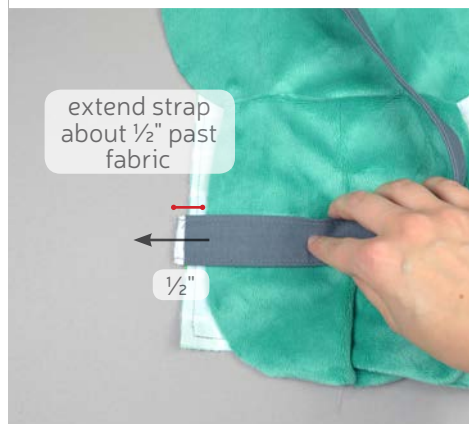


30. ATTACH THE STRAPS AT THE TOP

- If you haven't already, locate the **strap placement squares** found on the paper pattern for the **HEAD BACK TOP** (J). Transfer them over to the right side of the fabric. An easy way to do this is to cut out the squares and trace the outlines using a fabric marker.
- Grab one end of one of your strap pieces and fold it under by about 1-1½". Take this folded end and layer it over the **placement square** with the fold pointing downward.
- Sew over the folded edge in a square shape to secure it in place. Repeat with the other strap piece and the other placement square.

- If you haven't already, locate the **strap placement lines** found on the **BODY BACK** paper pattern (O). Transfer them over to the right side of the fabric. Take the other end of one of your strap pieces and align it between the **placement lines**. Extend it beyond the body fabric by about ½" for extra strength and security.
- Baste the strap to the body fabric within the seam allowance. Repeat with the other strap on the other side for two complete straps.

31. ATTACH THE STRAPS AT THE BOTTOM



- If desired, take this time to test the fit of your straps. You can undo the basting stitches at the bottom of the strap to make them shorter if desired. If everything fits all right, go back and stitch over the straps several more times so the hold is very strong and secure.

sew desu ne?

| WWW.CHOLYKNIGHT.COM |

STEPS 32-38: ADJUSTABLE STRAPS

The next 7 steps go over how to make adjustable straps. This version is more difficult and involved than non-adjustable straps, but in the end the backpack is more adaptable. If you already did your straps in the previous step, skip ahead to step 39, page 27.

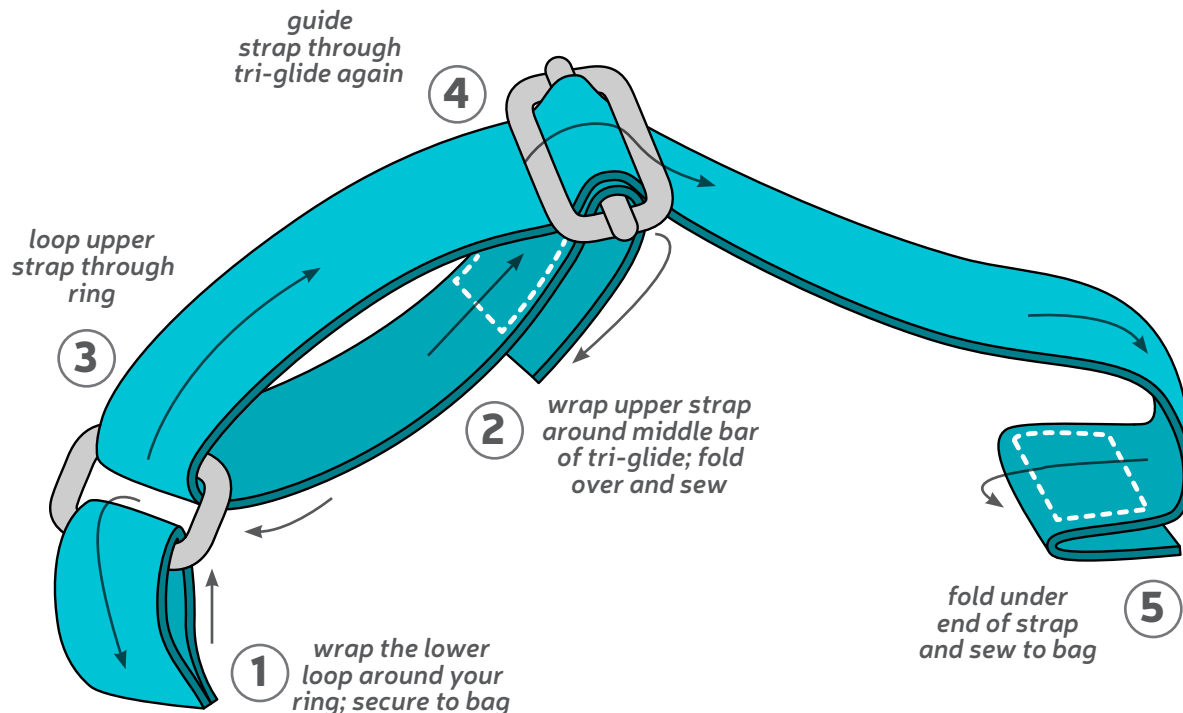
32. CUT THE STRAPS

- Grab your webbing/strapping material. Cut two lower loops and two upper straps following the measurement for your size.
- Since the straps are adjustable, there's some leeway in the sizing, but you can always shorten the straps later.
- If you or the recipient are larger than the average person of the suggested height, consider going a size up.

APPROXIMATE SIZE	HEIGHT	LOWER LOOP (CUT 2)	UPPER STRAP (CUT 2)
CHILD	50"-60"	4"	29"
TEENAGER/ SMALL ADULT	60"-64"	4"	35"
MEDIUM ADULT	65"-69"	4"	39"
LARGE ADULT	70"-75"	4"	43"

strap assembly: at-a-glance

- The next 6 steps go over how to assemble the straps into your strap hardware. This illustration shows an at-a-glance view of what we'll be doing in more detail next.



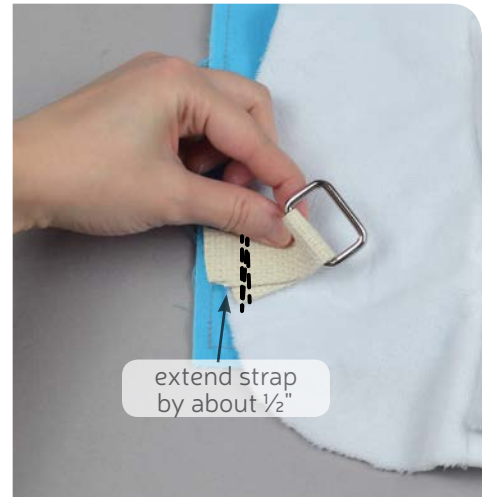
sew desu ne?

| WWW.CHOLYKNIGHT.COM |



33. LOOP THE RINGS

- Grab one of your **lower loop** strap pieces and your **rectangular ring**.
- Wrap the loop around the ring and bring the short ends of the loop together.
- If you haven't already, locate the **strap placement lines** found on the paper pattern for the **BODY BACK** (O). Transfer them over to the right side of the fabric.
Place the ends of the lower loop between these **placement lines**. Make the strap extend about $\frac{1}{2}$ " beyond the fabric for extra stability.
Baste the strap to the fabric within the seam allowance. Stitch over the area several times for a very strong hold.



- Grab one of your **upper strap** pieces and your **tri-glide**.
- Take one end of your upper strap and insert it into one of the slots of the tri-glide from the bottom up.
- Feed the strap into the remaining slot of the tri-glide from the top down.
- Fold over the strap so it overlaps by about $1\frac{1}{2}$ ".

34. LOOP THE MIDDLE BAR



sew desu ne?

| WWW.CHOLYKNIGHT.COM |



stitch
the
overlap



OR:
clip the
overlap
& stitch
later



trace the placement
squares

35. SECURE THE MIDDLE BAR

- Stitch the **STRAP** where it overlaps with itself in a square around the edges.
- ALTERNATIVELY:** you could also clip the strap here to temporarily hold it in case you want to try on the backpack first and stitch it later.
- If you haven't already, locate the **strap placement squares** found on the paper pattern for the **HEAD BACK TOP (J)**. Transfer them over to the right side of the fabric. An easy way to do this is to cut out the squares and trace the outlines using a fabric marker.

- Take your back piece so far and place it on your work table with right sides facing up. Place your **upper strap** on top with the folded end facing down.

- Grab the other end of your strap and feed it through the other side of your **rectangular ring**.

- Take that same end and feed it through one slot of the tri-glide again, from the bottom up.

→ Push the other end of the strap out of the way to make room.

- Feed it through the remaining slot of the tri-glide, from the top down.

36. LOOP THE UPPER STRAP



place
back and
strap
right
side up

a.



feed
end
through
ring

b.



feed strap
through one
slot

c.



feed strap
down through
second slot

d.

sew desu ne?

| WWW.CHOLYKNIGHT.COM |



37. ALIGN THE UPPER STRAP

- Pull the **upper strap** through the tri-glide and it should look as shown. All the looping is complete!
- Fold over the end of the strap by about 1½".
- Flip the strap so the folded end is facing down onto the **placement square** you marked before.

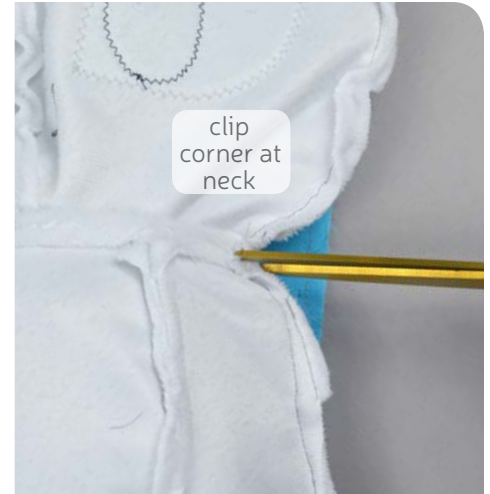
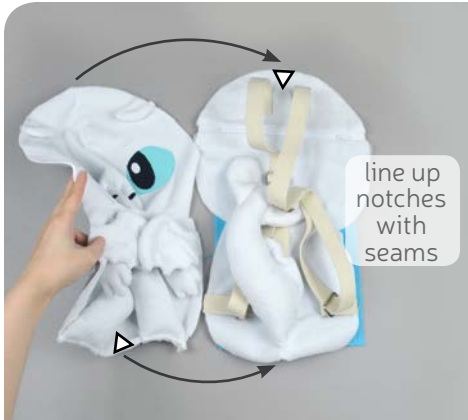


- Stitch the folded end of the strap to the **placement square** in a rectangle.
- Repeat steps 33-38 with your remaining **strap, ring,** and **tri-glide** pieces so the other side of the backpack now also has a strap.
Now would be a good time to do a test fit of the strap length if that's a concern.

38. SECURE THE UPPER STRAP

sew desu ne?

| WWW.CHOLYKNIGHT.COM |



39. SEW THE FRONT TO THE BACK

- Grab your body front and body back so far. Next we'll be sewing this front and back together, but first make sure all the extra bits are tucked inside -- the **ARMS, LEGS, WINGS, SPIKES, STRAPS**, and **TAIL**. Line up the front to the back, matching the seams at the neck. The **notch** on the **HEAD BACK TOP (J)** matches with the **seam** on the **HEAD FRONT (A)**. The **notch** on the **BELLY (E)** matches with the **seam** on the **BODY BACK (O)**
- Sew the body front to the back all the way around.
- Before turning, make small clips into the seam allowance at the corners of the neck.

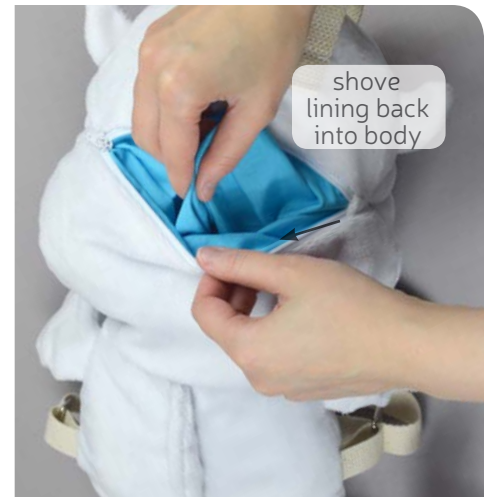


40. TURN RIGHT SIDE OUT

- Turn the body right side out through the opening in the back of the neck. Pull out one limb at a time for the easiest result.
- The body is complete! Now onto stuffing!
- For best results, pull the lining out so it's not inside the body. Then stuff the bottom half of the dragon lightly with stuffing. Keep most of the stuffing near the edges so the finished plush can develop its shape. Keep the stuffing light in the middle since that's where your belongings will go.

sew desu ne?

| WWW.CHOLYKNIGHT.COM |



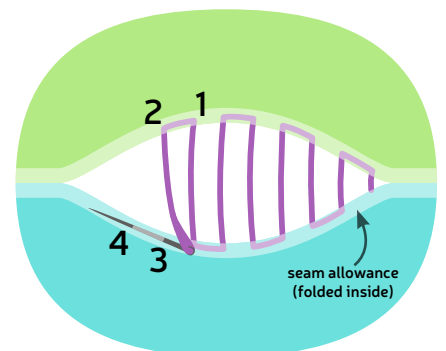
41. STUFF THE BODY

- Flip the plush over and stuff the head next. Once again, focus most of the stuffing on the outer edges of the plush so the head gets defined.
- Also push a lot of stuffing into the nose area so there are no wrinkles in the fabric.
- Once the stuffing is to your satisfaction, shove the lining back inside the body and smooth it out with your hands.



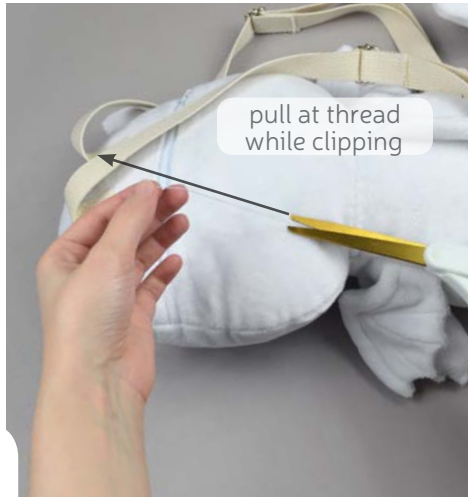
42. SEW THE BACK NECK CLOSED

- Double check any areas that need more stuffing before closing up the plush. The back of the body and the head can sometimes look a little hollow. The 'cheek' area just above the neck typically needs a lot to look full too.
- Make sure the seam allowances in the opening are tucked inside and prepare to ladder stitch it closed. Thread a hand-sewing needle and knot it at the end. Insert the needle from the inside of the opening and out of the plush near one edge of the opening. This will leave the knot inside the plush.
- Continue from here doing a ladder stitch. Take a $1/8$ " stitch into the fold of one side of the opening, then go across and take another. (See illustration at the right). Keep going down the opening until you reach the end.



sew desu ne?

| WWW.CHOLYKNIGHT.COM |



- a.** When you're finished, stitch a knot into the end of the seam. Then insert the needle near the finished knot and out of the plush about 1-2" away.
- b.** Pull the thread through and hold it taut while snipping the thread. The excess thread should sink back inside the plush -- all hidden!

43. CLIP THE THREADS

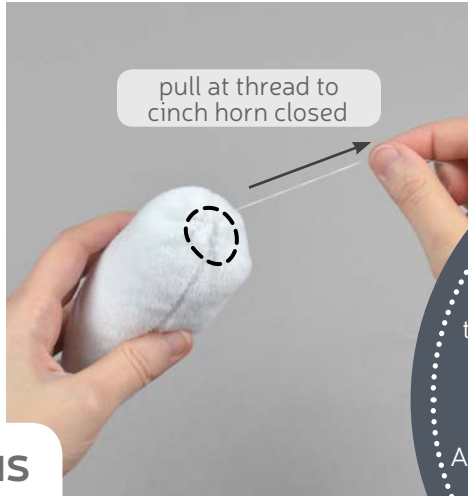
- a.** Grab your **HORN** pieces (P). Take two of them and align them with right sides facing and raw edges matching up.
- b.** Sew them together along the long curved edge. Leave the short straight edge free for turning the horn later.
- c.** Turn the horn right side out and repeat with the remaining two horn pieces for two completed horns total.
- d.** Stuff the horns semi-firmly with stuffing when complete.

44. SEW THE HORNS



sew desu ne?

| WWW.CHOLYKNIGHT.COM |



45. CINCH UP THE HORNS

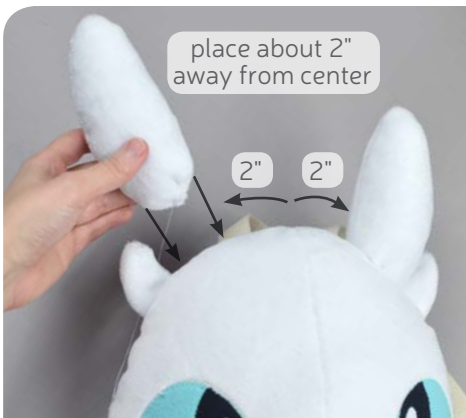
- a. Hand sew a gathering stitch around the opening of the **HORN**.
- b. Pull at the thread of the gathering stitch to cinch the horn completely closed. Sew a few knots into the opening to hold it shut. If you have thread leftover, keep it attached for joining the horn to the head next.

gathering:

The process of shortening the length of a piece of fabric by sewing long stitches through it. When the thread is pulled, it forms small folds that ruffle the fabric.

gathering stitch:

A long version of the running stitch, which is a stitch done by weaving the needle in and out of a length of fabric going along a line. The long stitches (about $\frac{1}{4}$ " - $\frac{1}{2}$ " long) gather the fabric when pulled later.



46. ATTACH THE HORNS

- a. Place the cinched end of the **HORN** on the top of the head. The cinched end should be pointing down and it should be about 2" away from the center seam. Note that the horns curve slightly toward the center for an accurate character look.
- b. Hold the horn in place by sticking pins down into the base of the horn and through the head. Stitch the horn to the head with a ladder stitch around the base. Repeat with the remaining horn for both horns on the dragon head.

sew desu ne?

| WWW.CHOLYKNIGHT.COM |



47. SECURE THE TAIL



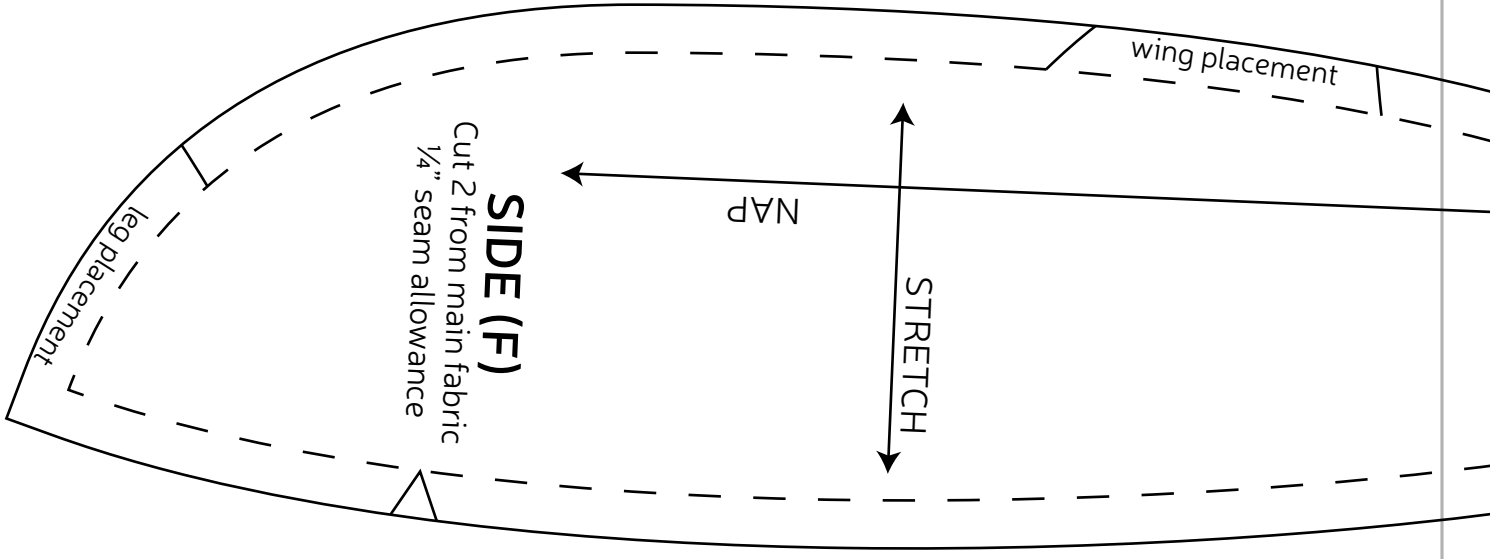
- a. Since the back of the dragon will be flat against your back when worn, it's helpful to secure the **TAIL** so it doesn't move. Flip the tail so it lies flush against one side of the body or the other as you prefer.
- b. Ladder stitch the inside of the tail to the body. Go back and forth once or twice to secure it strongly for all the wear it will endure.



Congrats!
This completes
your backpack!
Now try it on and
go on an
adventure!

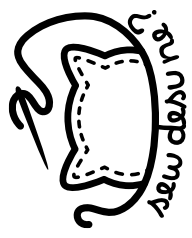
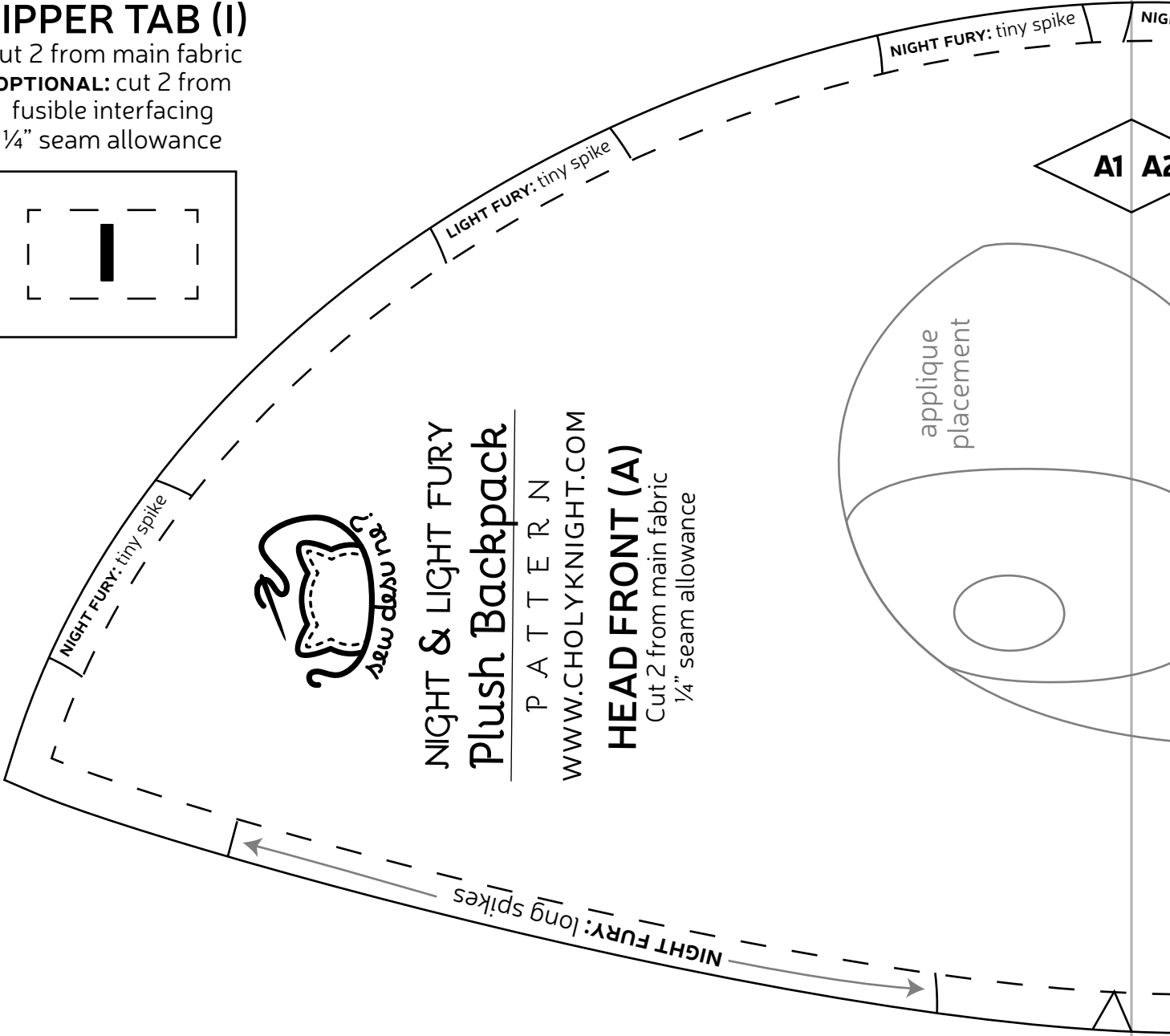
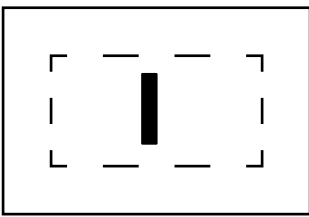
sew desu ne?

| WWW.CHOLYKNIGHT.COM |



ZIPPER TAB (I)

Cut 2 from main fabric
OPTIONAL: cut 2 from fusible interfacing
1/4" seam allowance



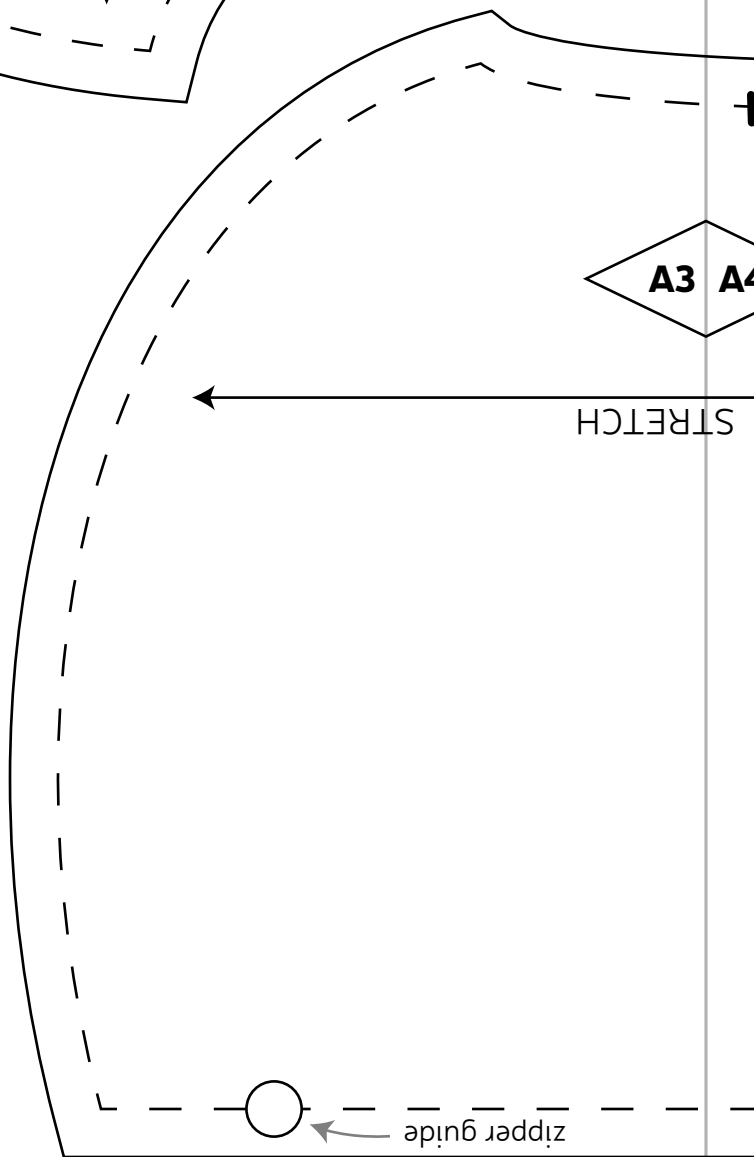
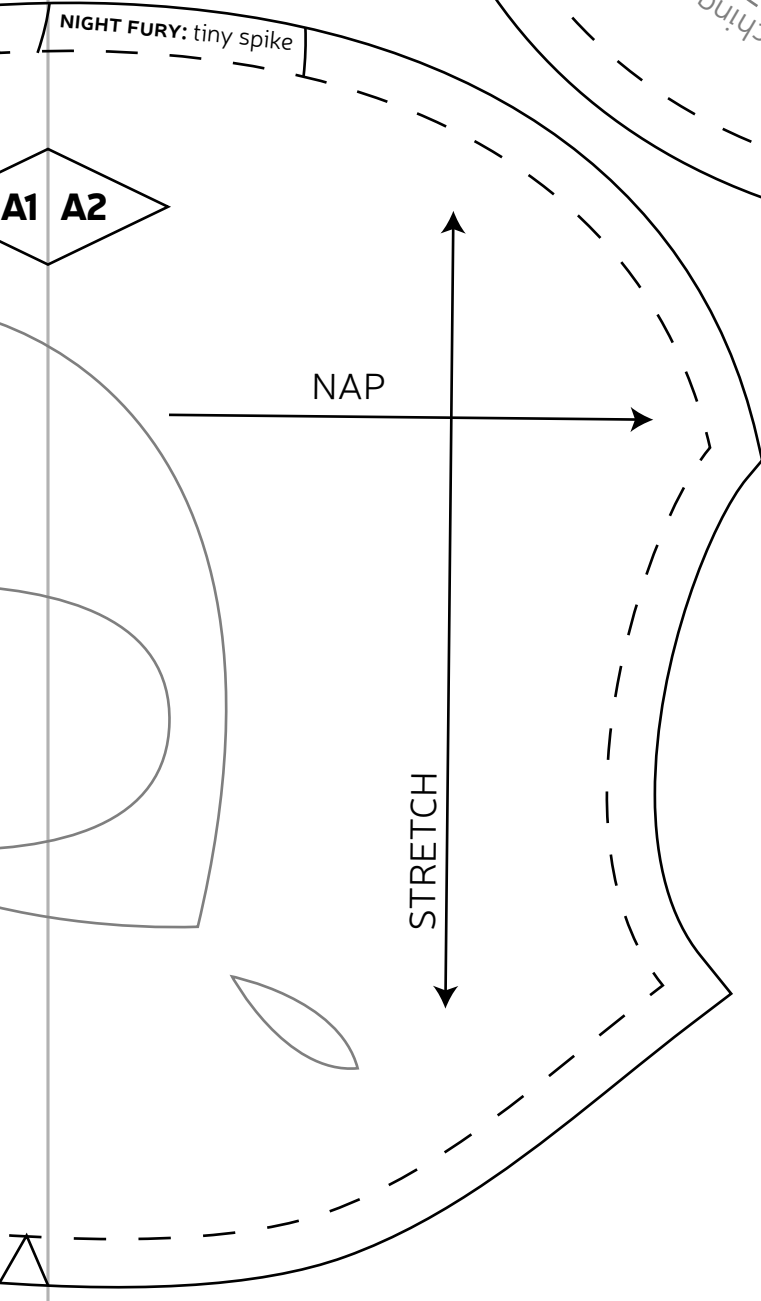
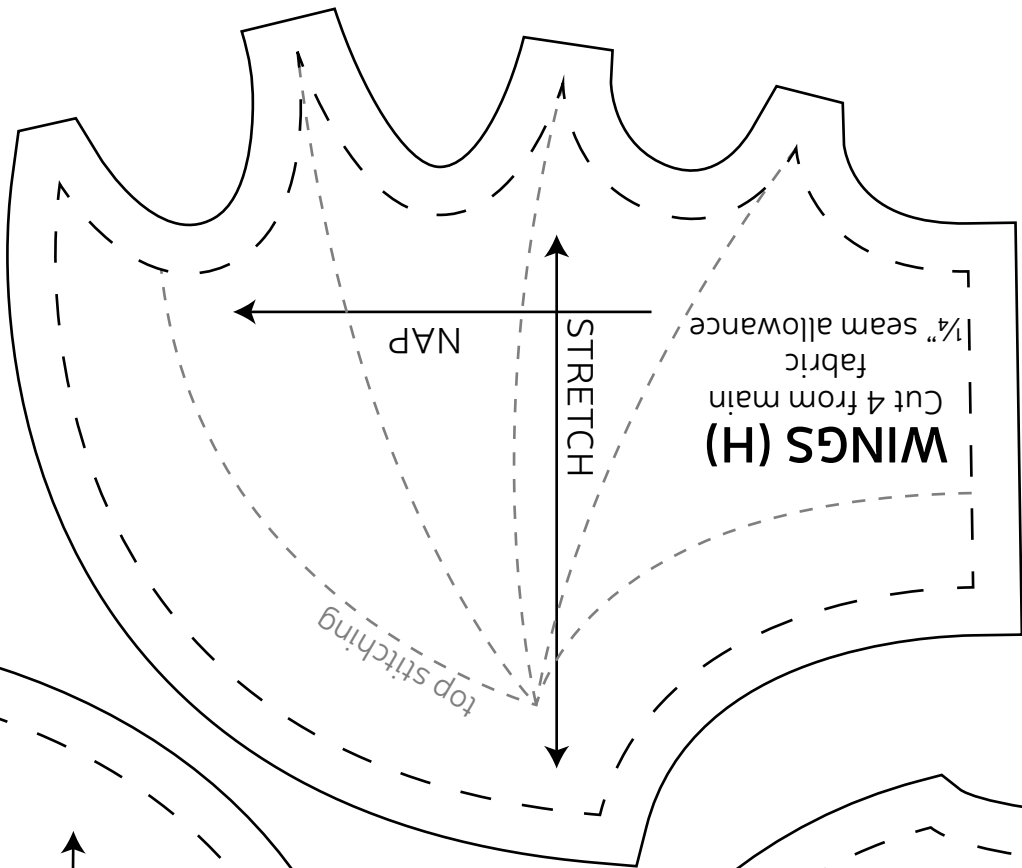
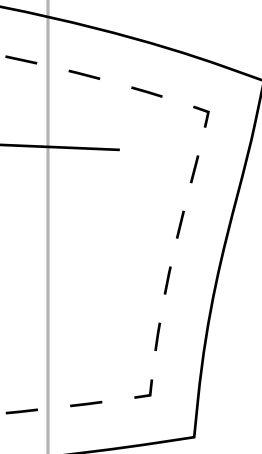
NIGHT & LIGHT FURY
Plush Backpack

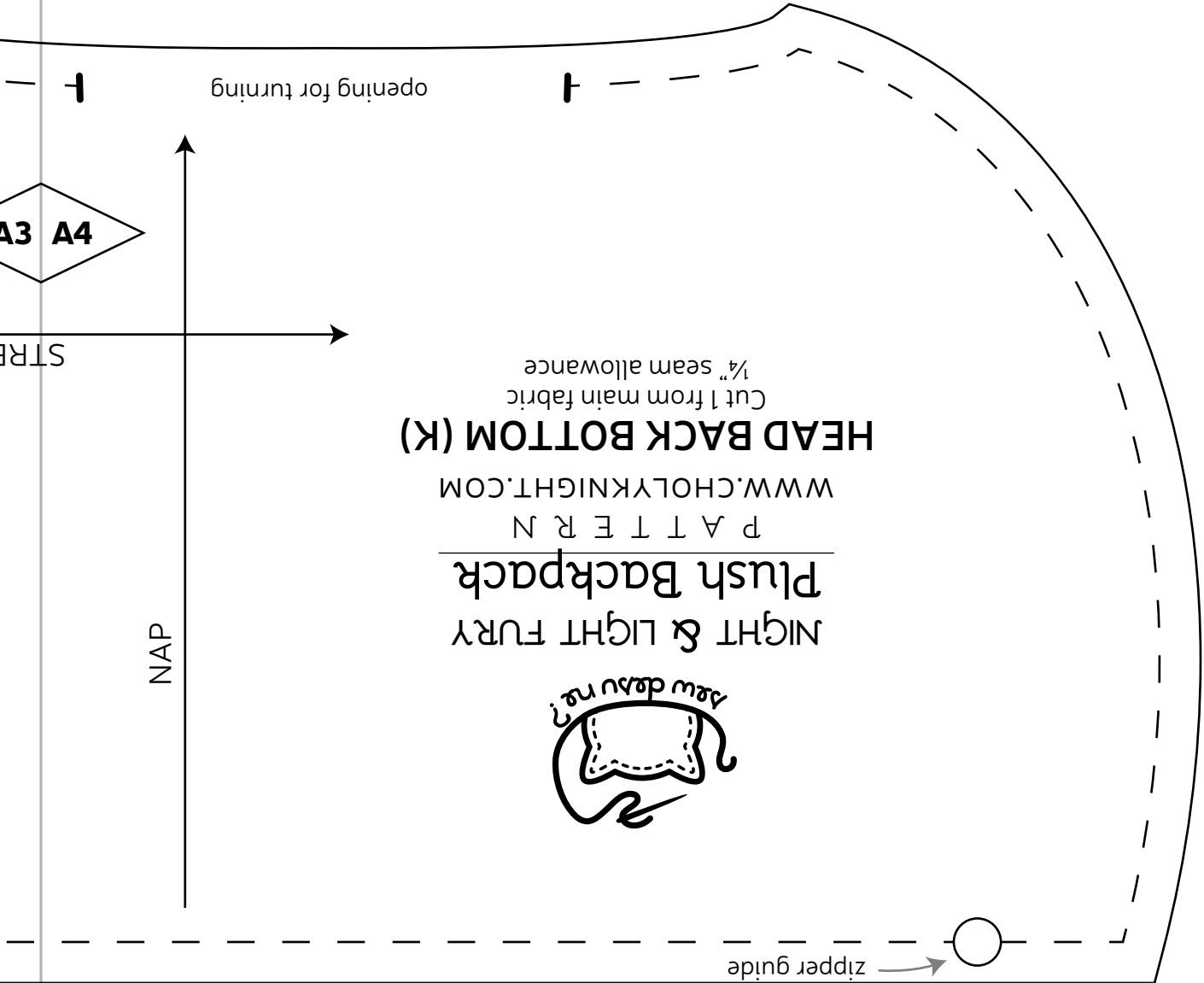
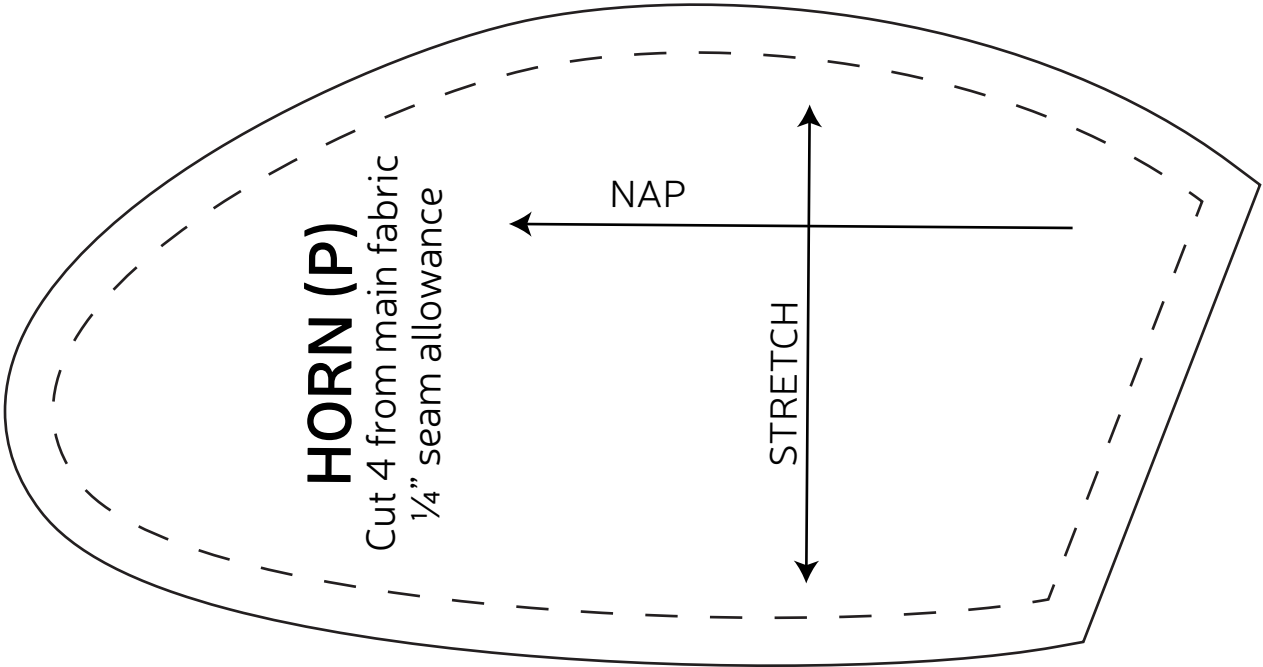
P A T T E R N
WWW.CHOLYKNIGHT.COM

HEAD FRONT (A)

Cut 2 from main fabric
1/4" seam allowance

A1 A2





B1 B2

strap placement

strap placement

OPTIONAL: cut 1 from fusible interfacing
Cut 1 from main fabric
¼" seam allowance

HEAD BACK TOP (J)

long spike placement

TAIL (M)

Cut 2 from main fabric
¼" seam allowance

WWW.CHOLYKNIGHT.COM

P A T T E R N

**NIGHT & LIGHT FURY
Plush Backpack**

STRETCH

NAP

NAP

STRETCH

zipper guide

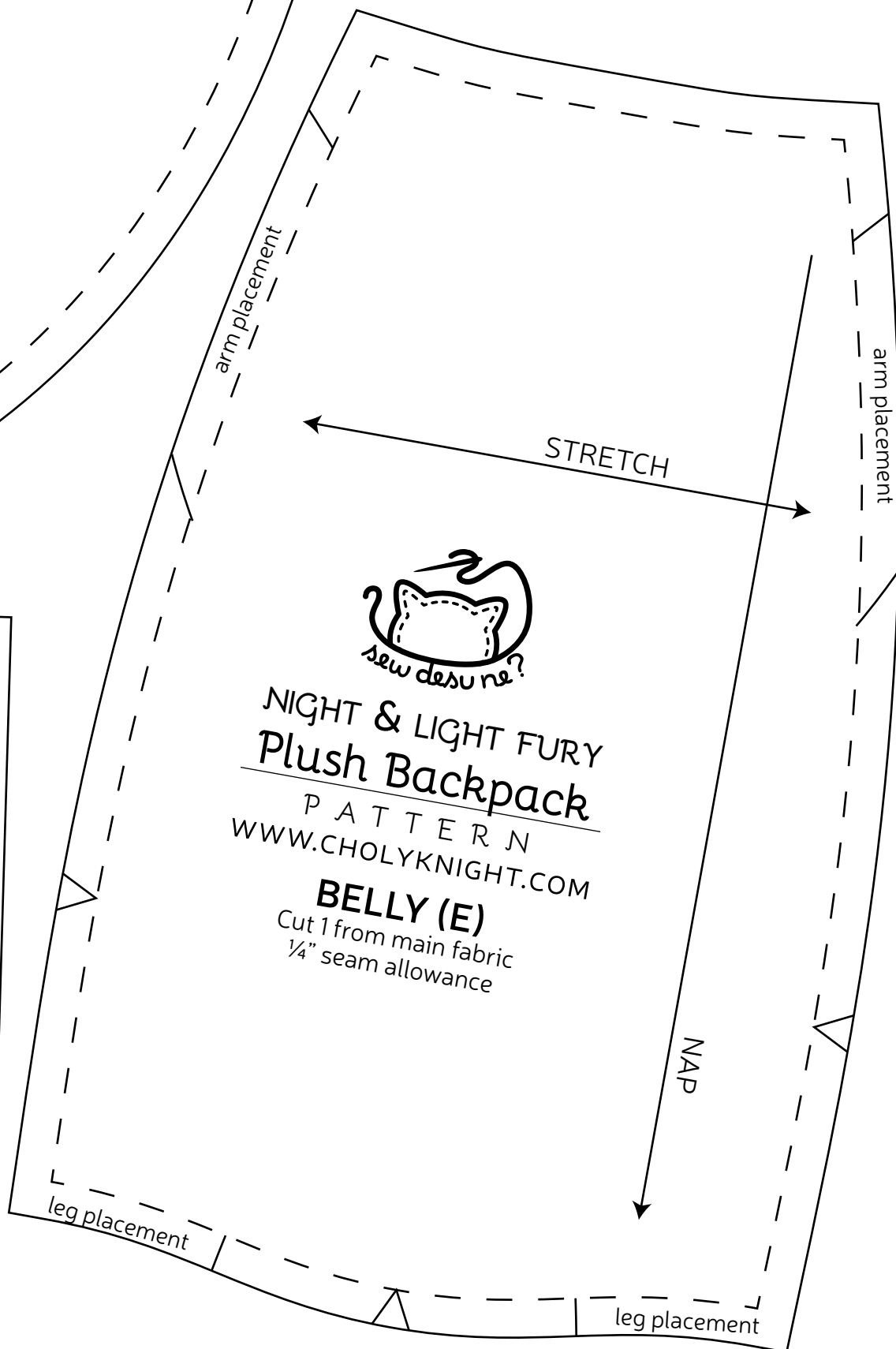
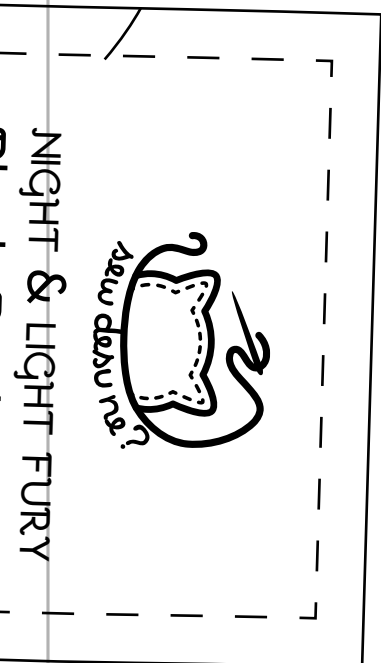
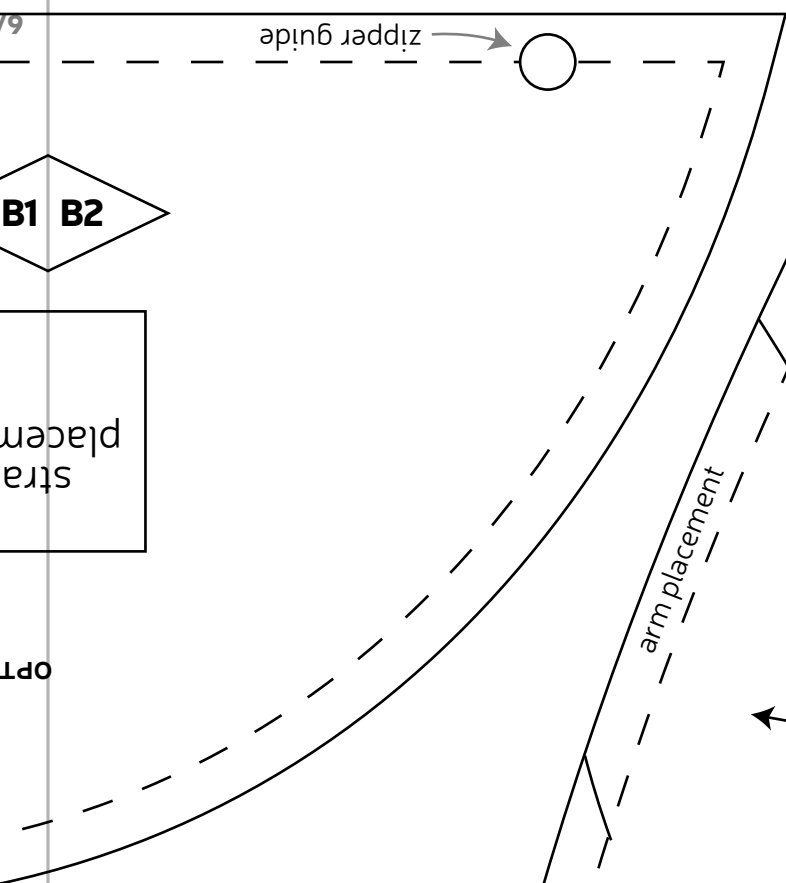
tail tip placement

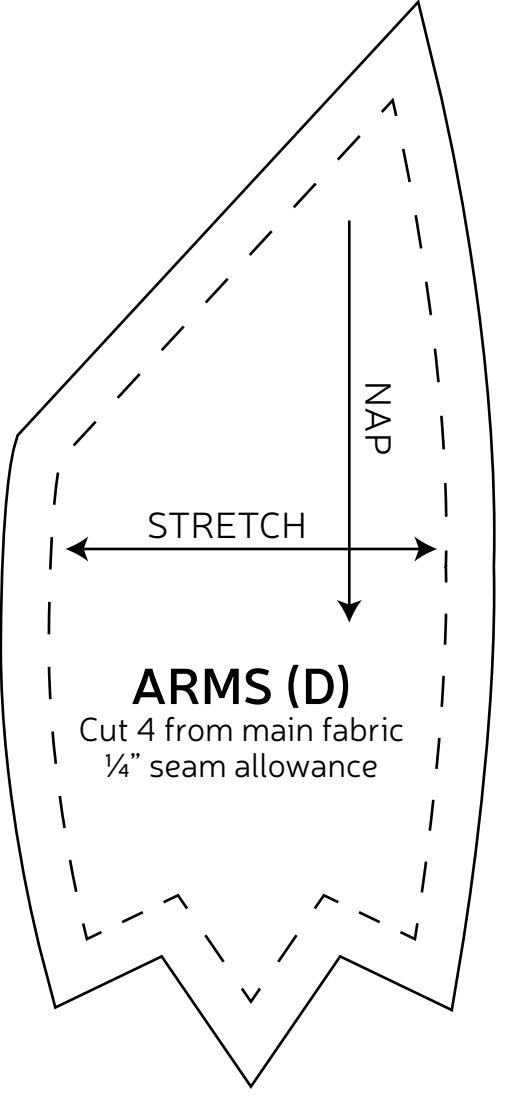
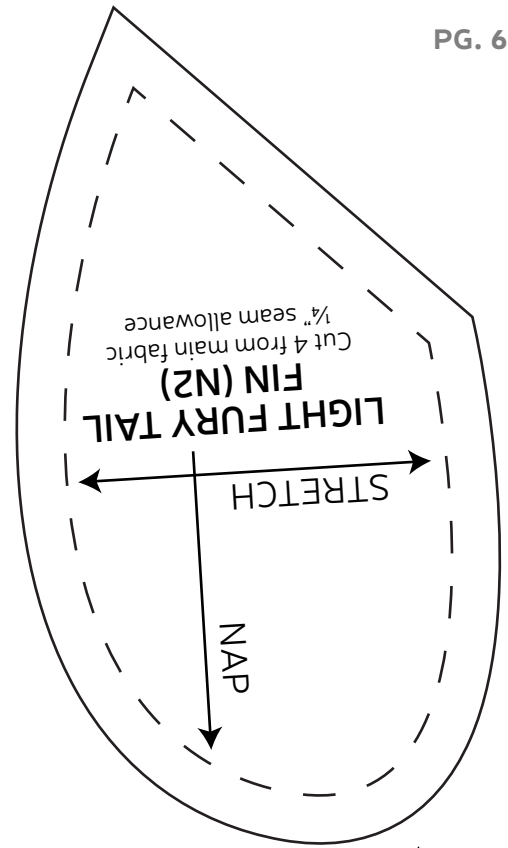
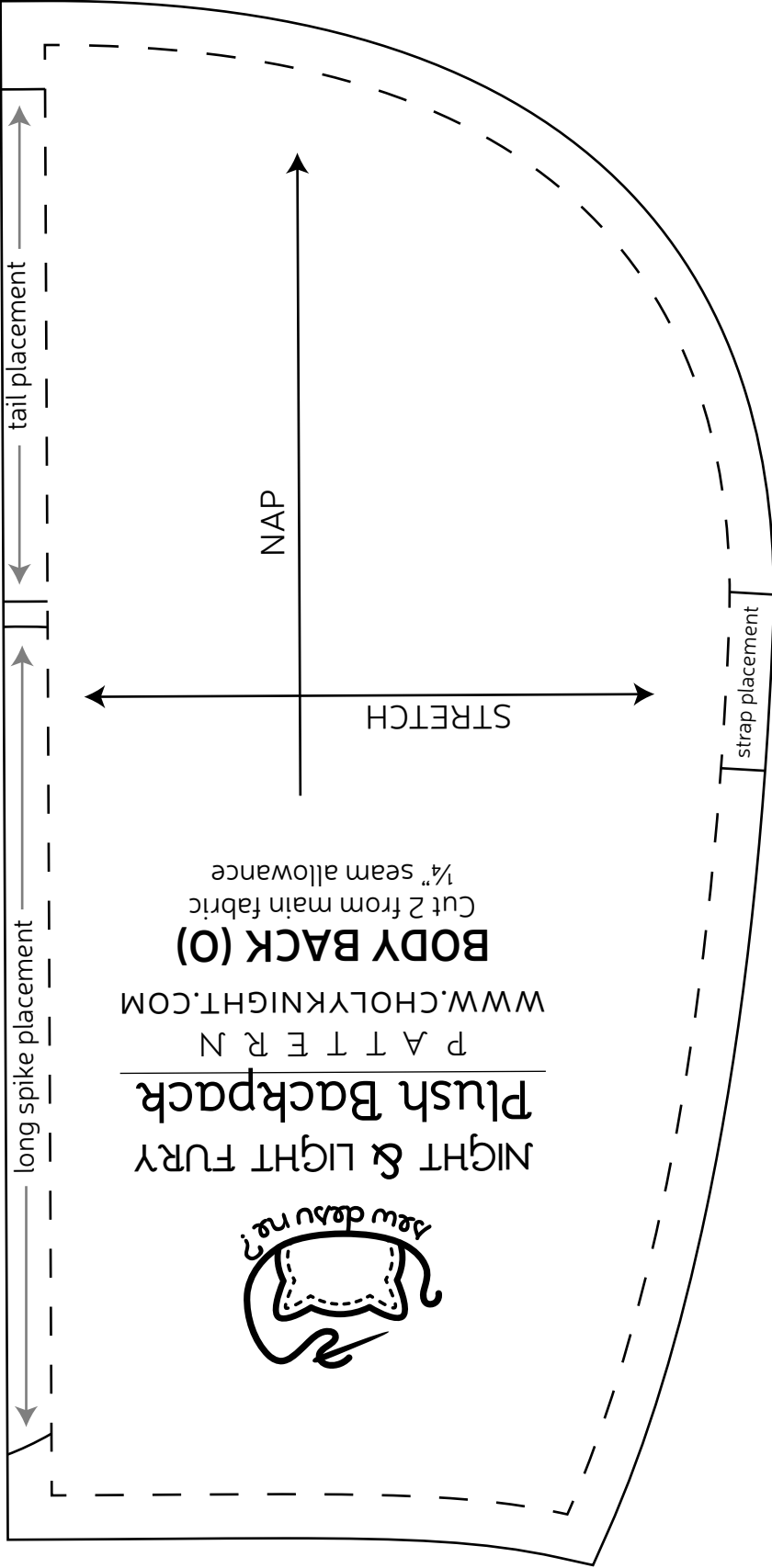
tail tip placement

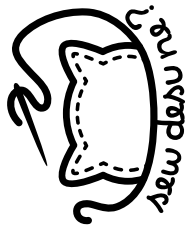
NIGHT FURY TAIL FIN (N1)

Cut 2 from main fabric
Cut 2 from red fabric
¼" seam allowance

appliance placement







NIGHT & LIGHT FURY
Plush Backpack

P A T T E R N
WWW.CHOLYKNIGHT.COM

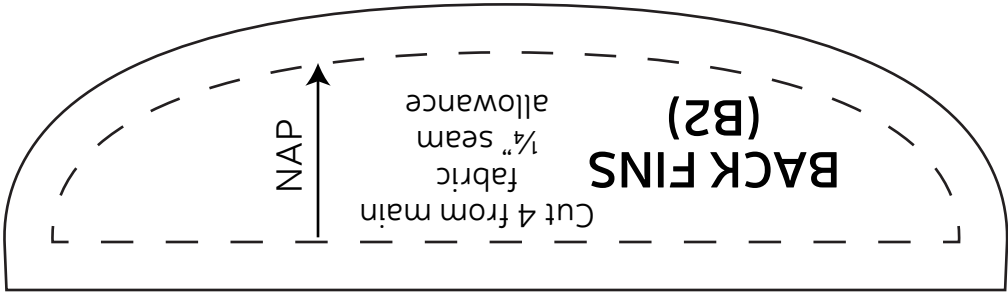
LINING POCKET (L)

Cut 2 from lining fabric
1/4" seam allowance

NAP

STRETCH

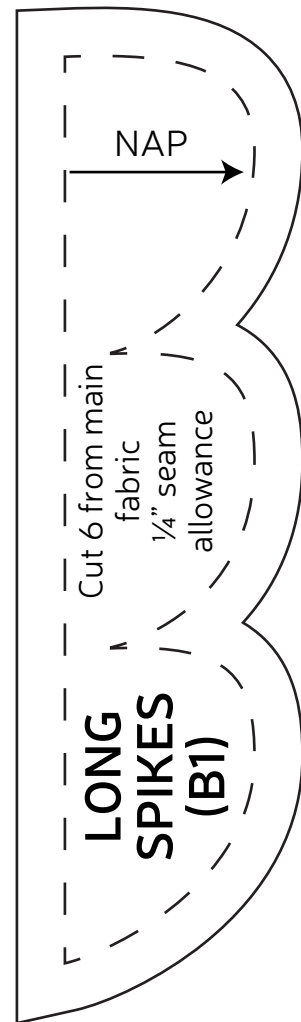
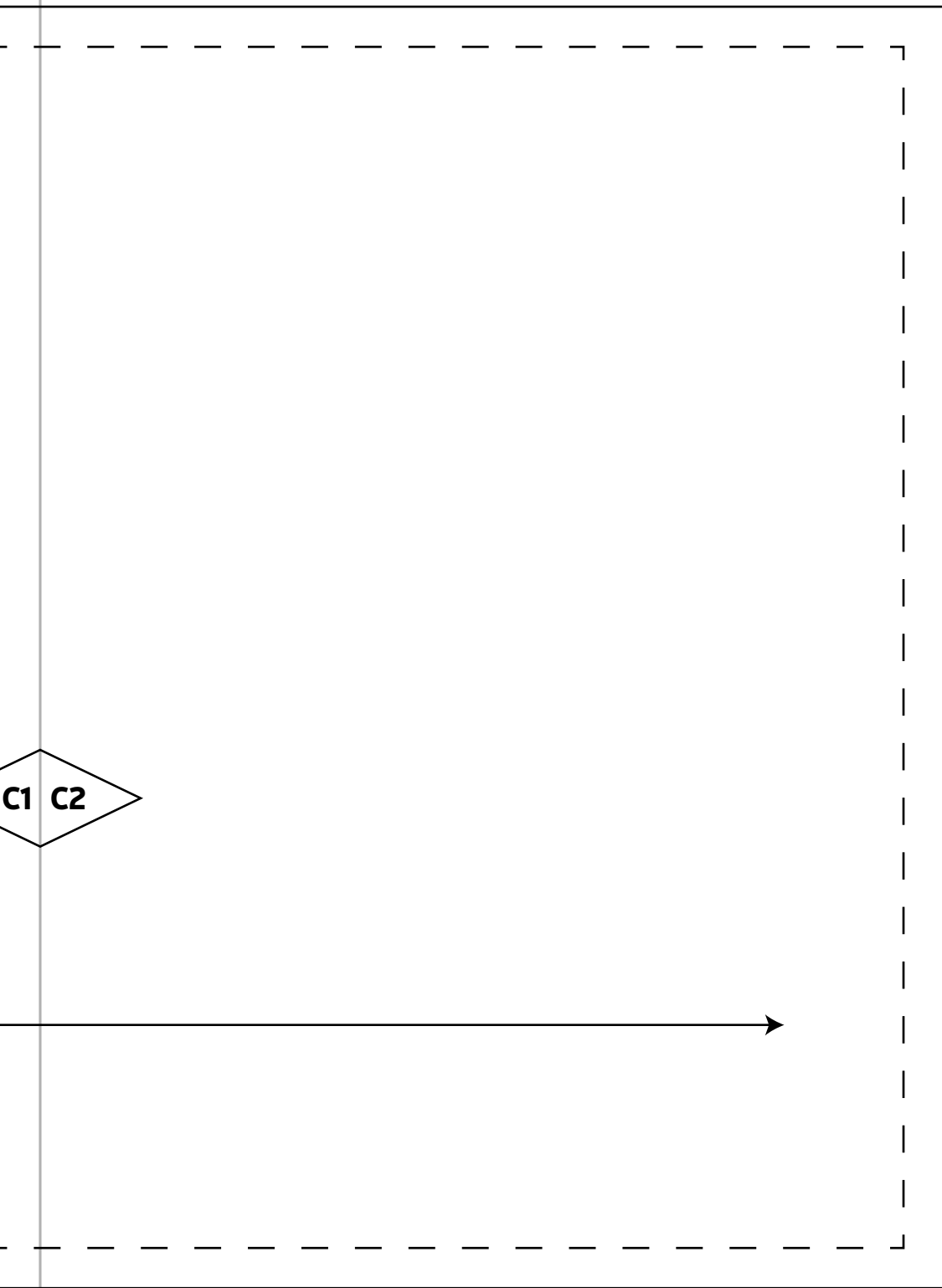
C1 C2

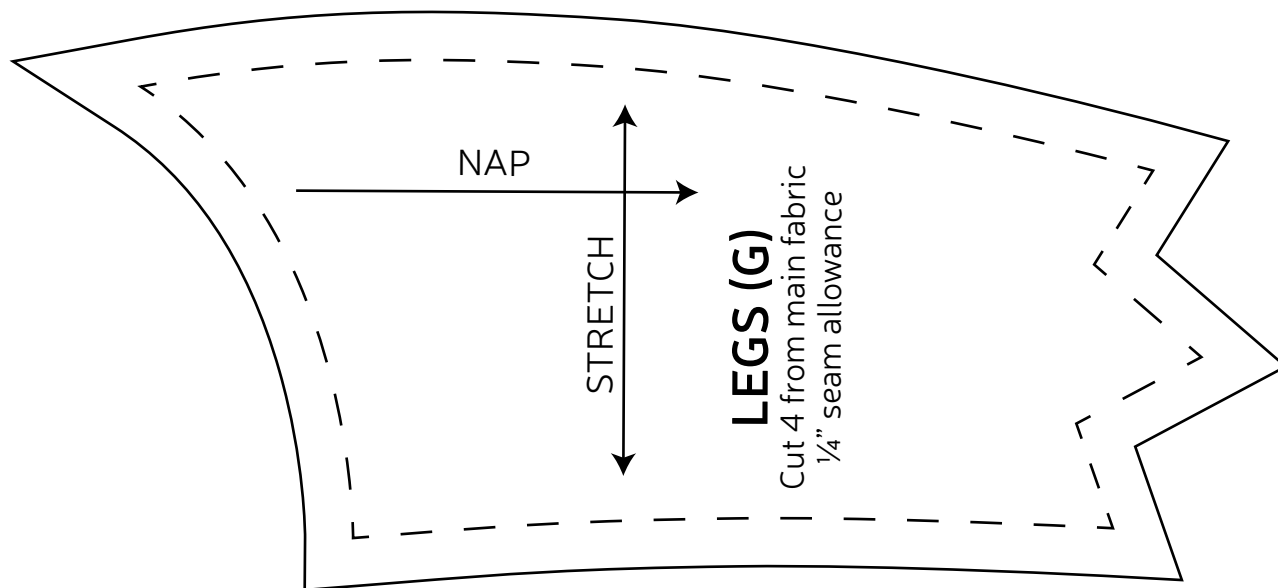


BACK FINS
(B2)

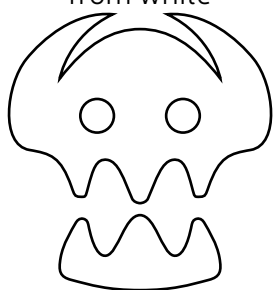
Cut 4 from main
fabric
1/4" seam
allowance

C1 C2





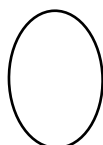
SKULL
trace & cut 2
from white



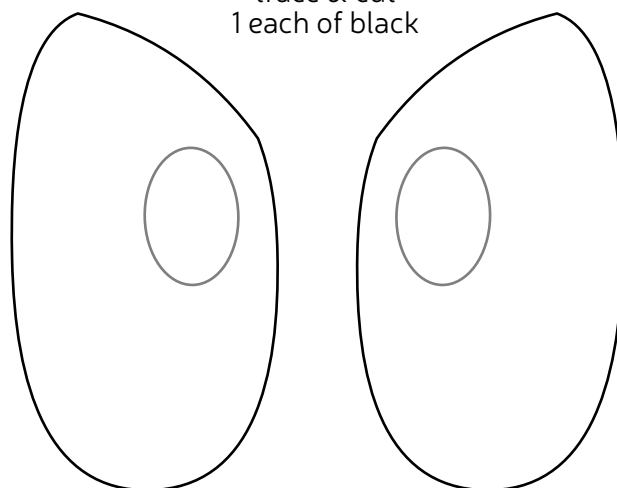
NOSTRILS
applique
trace & cut
2 of black or
dark gray



EYE SHINES
applique
trace & cut
2 of white



PUPILS
applique
trace & cut
1 each of black



EYES
applique
trace & cut
1 each of green
or blue

