

# BULBASAUR PLUSH



A FREE SEWING PATTERN BY



# bulbasaur plush

Pokemon fans know that this little cutie is the one that starts it all! At number 1 on the Pokedex, Bulbasaur is a dinosaur-looking creature with a cute plant bulb growing out of its back. This plush version features the same chubby body with stumpy legs. For some extra fun, you have your choice of the classic plant bulb for the back, or a pumpkin for Halloween! But the simple shapes and basic construction make it easy to do lots of other seasonal variations too.

## DIFFICULTY:



The hardest part of this plush is likely sewing the tiny legs into the body. They require a good bit of pivoting. So be sure to stop frequently with your needle in the fabric before turning in new directions.

## SKILLS USED:

- Fusible web applique
- Curved sewing
- Needle sculpting
- Darts
- Ladder stitch
- Sewing small pieces
- Gathering; gathering stitch
- Matching notches and points

## MAKES:

One plush: about 6" tall from bottom of feet to top of bulb or ears, 7" long, and 4" wide.



sew desu ne?

| [WWW.CHOLYKNIGHT.COM](http://WWW.CHOLYKNIGHT.COM) |

## materials & tools:

- ¼ yd. of fabric for main body
- ¼ yd. of fabric for bulb or pumpkin
- 5" x 9" piece of scrap fabric for poly pellet pouch
- 3" x 3" scrap of dark red applique fabric (flannel, felt, fleece, cotton, etc.) for eyes
- 2" x 2" scrap of red applique fabric for eye highlights
- 6" x 2" scrap of black applique fabric for smile and nostrils
- 2" x 2" scrap of pink applique fabric for blush
- 2" x 2" scrap of white applique fabric for eye shines and teeth
- 3" x 4" scrap of dark teal applique fabric for spots
- 6" x 8" piece of light or heavy duty fusible web
- sewing thread to match main fabric and applique fabrics
- poly-fil stuffing
- poly pellets
- spoon or funnel for filling poly pellets
- basic sewing tools (sewing machine, scissors, iron, needles, pins, fabric marker, seam ripper)



## SUGGESTED FABRICS:

Plush, stretchy fabrics such as fleece or minky are suggested. The variations of fleece and minky mentioned to the left would work well, but really any plushy fabric with a bit of stretch on the crosswise grain would be well-suited. Stretch fabrics like **FLEECE** or **MINKY** will create a more squat, round shape when stuffed. Non-stretchy fabrics, like **FELT** or **COTTON**, won't stretch when stuffed so the resulting plush will look elongated as shown.

**MINKY**

**VS.**

**FELT**



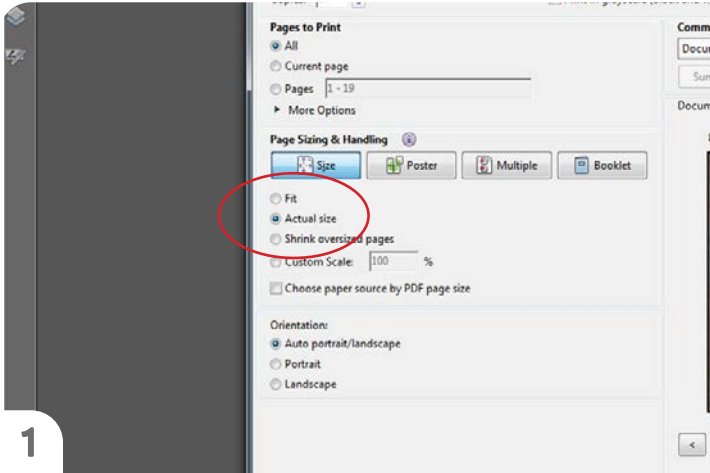
sew desu ne?

| [WWW.CHOLYKNIGHT.COM](http://WWW.CHOLYKNIGHT.COM) |

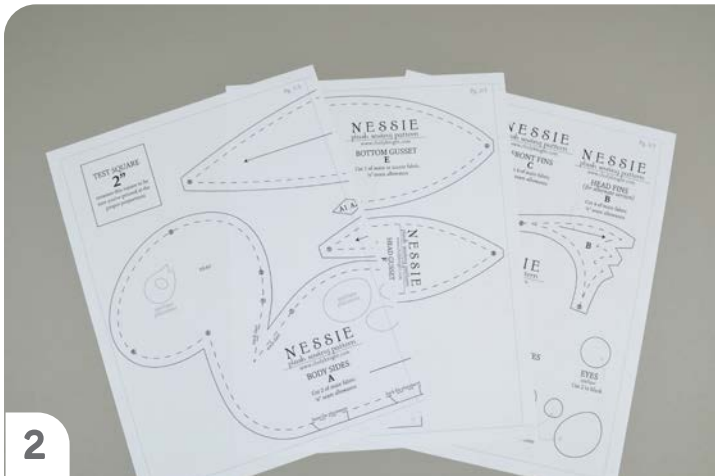


## printing the pattern:

To print the pattern, set your computer to print **PAGES 28-32**. If you're unfamiliar with printing and assembling a .pdf pattern, read the steps below.



At the print dialog box, check the box that says print at “Actual Size” or 100%. Any other selection (such as “Fit to page”) will distort the pattern so it's slightly larger or smaller and we don't want that.



Print the pages needed for the file. You might have one or more. Either way, be sure you have the full collection by noting the page numbers in the corner.

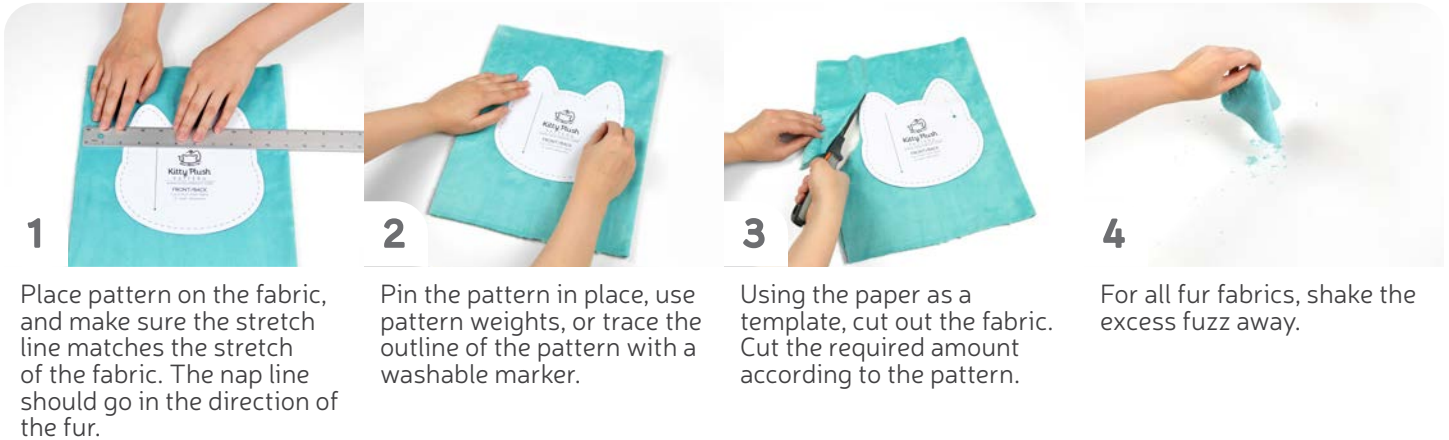


You can trace the patterns onto a different paper, or you can also just cut them straight from the printer paper. They might be a little hard to pin through, so you might want to use your longest pins. But you could also use pattern weights or trace the outlines onto the fabric with a washable marker and cut them out from there.

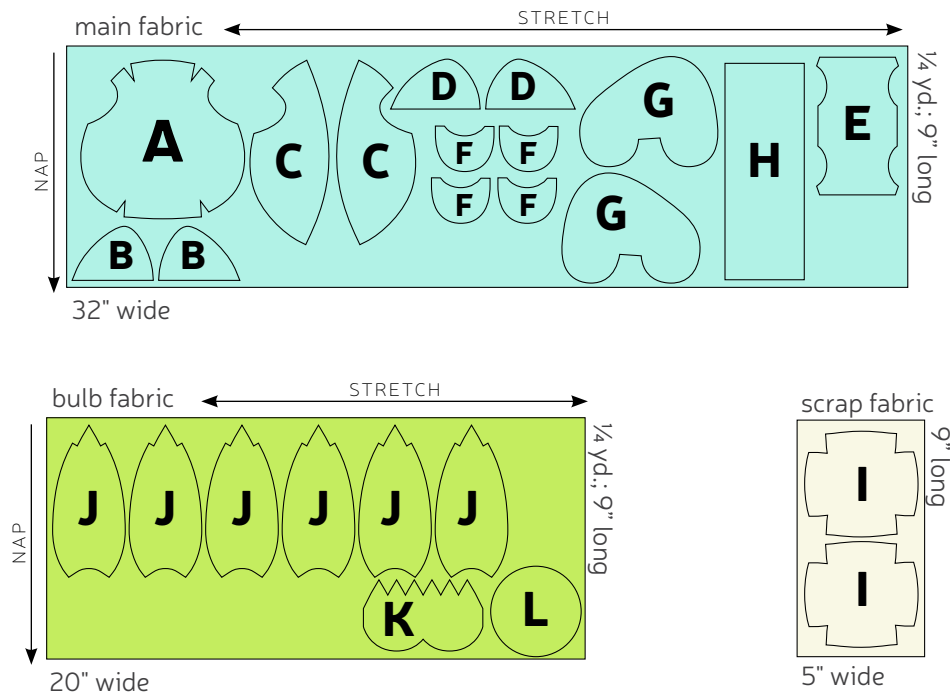
sew desu ne?

| [WWW.CHOLYKNIGHT.COM](http://WWW.CHOLYKNIGHT.COM) |

## cutting the fabric:



## cutting layout: **CLASSIC BULB VERSION**



## BEFORE YOU BEGIN:

- Briefly read the project instructions so you know what to expect.
- If desired, mark the cut fabric pieces with the markings and symbols from the pattern. Or wait until the applicable step before transferring.
- Note that a 1/4" seam allowance is used throughout the project.

sew desu ne?

| [WWW.CHOLYKNIGHT.COM](http://WWW.CHOLYKNIGHT.COM) |



## 1. PREPARE THE FACE APPLIQUE

- Grab your fusible web and trace all the applique pieces you want onto the smooth (paper) side. You should have at least **eyes** (2), **eye shines** (2), **eyelids** (2), **nostrils** (2), **smile** (1) and **spots** (about 7). Other pieces like **teeth** (2), **eye highlights** (2), and **blush** (2) are optional.
- Fuse the bumpy (adhesive) side onto the wrong side of your applique fabric. For a canon version of Bulbasaur, the **eyes** should be red, the **eye highlights** a lighter red, and the **spots** a dark teal.
- Cut out the face pieces and grab your **HEAD FRONT (A)** piece. Set your paper pattern on top of the fabric piece (right sides up). Align the **eye** piece on top where the placement markings are. Then carefully slide the paper pattern away while holding the applique piece in place.



## 2. FUSE THE APPLIQUE

- Tuck the **blush** under the **eyes** (if using). Fuse the **eyes** in place with your iron. Use a press cloth if you're using a polyester or fuzzy fabric like minky. A scrap piece of cotton works as a press cloth, and will help prevent the fabric from melting.
- Next, move onto the smaller pieces: the **eye highlights** and **shines**. Fuse them the same way as you did the **eyes**, using the paper pattern and photos as a guide.
- Now you can add the remaining small pieces, like the **teeth**, **smile**, **nostrils**, **eyelids**, and **spots**. If you used heavy duty fusible web, you can keep the pieces fused without sewing, or you can sew them in place a number of ways. I've used a zigzag stitch here.

→ Refer to the next step for some other applique options.

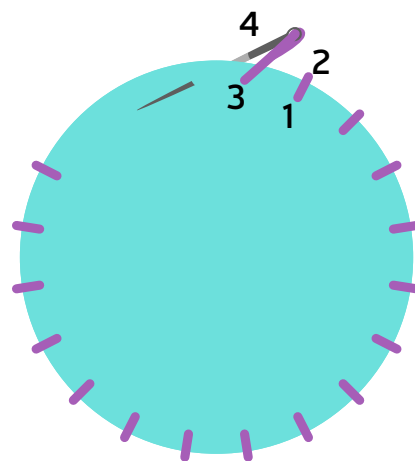
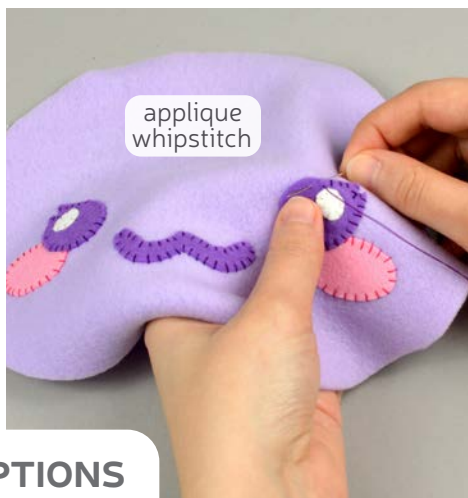
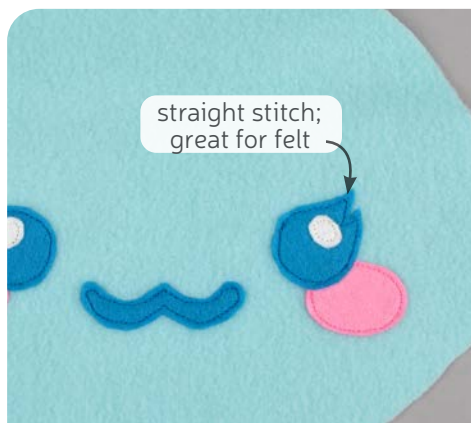
sew desu ne?

| WWW.CHOLYKNIGHT.COM |

- a.** Repeat steps 1-2 with your remaining applique pieces for the rest of the your Bulbasaur, including spots for the **BODY** (G).
- b.** And a face for the **PUMPKIN** (M) if you're doing one.
- *Refer to the next step for some other applique options.*



### 3. APPLIQUE THE REMAINING PIECES



#### 3a. OTHER APPLIQUE OPTIONS

- a.** Other good options for applique include a straight stitch, which involves sewing around the edge of the applique pieces with a straight stitch using matching thread -- about 1/8" in from the edge.
- b.** You can also applique by hand; I prefer a whipstitch. Thread a hand-sewing needle with some matching thread and knot it. Bring the thread up from the back of the project; about 1/8" in from the edge of the applique shape. Bring it down perpendicular from the curve, just outside of the applique shape. This completes one stitch.
- c.** For the next stitch, bring the needle back up about 1/8" away from the previous stitch and 1/8" in from the edge just as in the first stitch. Once again, bring it down just outside the applique shape. Continue this way until you've sewn around the shape.

sew desu ne?

| [WWW.CHOLYKNIGHT.COM](http://WWW.CHOLYKNIGHT.COM) |



- a. Grab your **HEAD FRONT** so far (A) and your **FRONT EAR** pieces (B). The straight edge of these ears will attach to the inner curve along the top of the head front. There are **notch markings** for extra help (so the pieces don't get flipped the wrong way).
- b. Grab one of the inner curves of the head front and stretch the fabric so the **single notches** match up. Pin the fabrics together.



#### 4. ALIGN THE FRONT EARS

### NOTCHES:

A type of placement marking found on the edge of a pattern template. Usually triangular in shape. They're used for lining up placement of the outer edge of pattern pieces.

They can be marked by cutting a small triangle into the fabric, coming out of the fabric, with a marker, or a small snip in the seam allowance. Use whatever method you find most comfortable.

- a. Sew the **HEAD FRONT** (A) to the **FRONT EAR** (B) along the **single notched** edge.
- b. Repeat with the other front ear piece on the other side of the head front. When complete it should look something like the second photo.

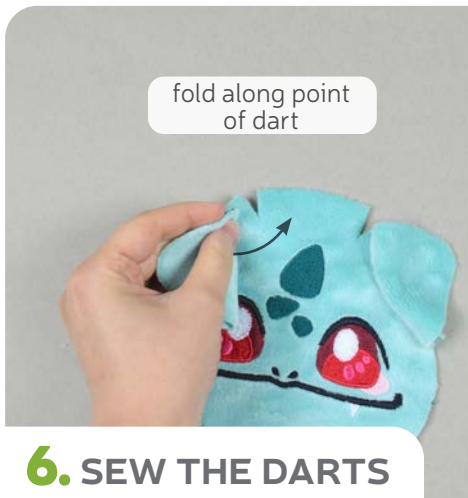


#### 5. SEW THE FRONT EARS

sew desu ne?

| [WWW.CHOLYKNIGHT.COM](http://WWW.CHOLYKNIGHT.COM) |





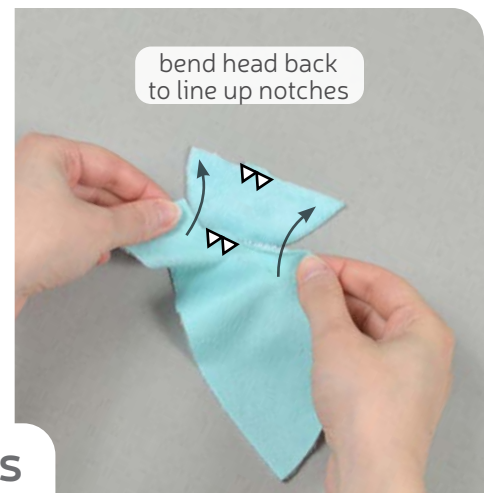
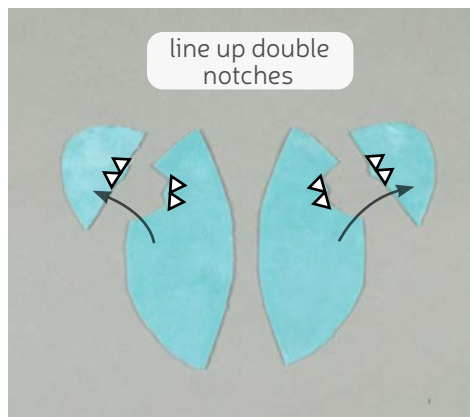
## 6. SEW THE DARTS

- If you haven't already, note the several triangular wedges found around the **HEAD FRONT** (A). These are **darts**. To sew them, start by folding the head along the point of one of the upper darts. This should line up the small slanted edges.
- Sew the **dart** starting at the opening and working toward the fold of the fabric. Try to blend your stitching into the fold so it makes a smooth transition and a rounder finish.
- Repeat with the other three **darts**. There should be two on top (between the ears), and two more on the bottom for four total.

### DARTS:

A wedge-shaped gap found in a pattern. When sewn in fabric, it creates a tuck in the fabric and develops a 3D shape. The diagonal sides of the wedge are the **LEGS**; these are matched up and sewn to the **POINT** of the dart.

- Grab your **HEAD BACK** (C) and **BACK EAR** pieces (D). We're going to attach them just like with the head front in step 4. This time, they're marked with **double notches**.
- Stretch the inner curve of the head back to fit along the back ear so the **double notches** match up.



## 7. ALIGN THE BACK EARS

sew desu ne?

| [WWW.CHOLYKNIGHT.COM](http://WWW.CHOLYKNIGHT.COM) |

- a. Sew the **HEAD BACK** (C) to the **BACK EAR** (D) along the **double-notched** edge.
- b. Repeat with both head back and back ear pieces so you have two backs total.



## 8. SEW THE BACK EARS



## 9. SEW THE HEAD BACK

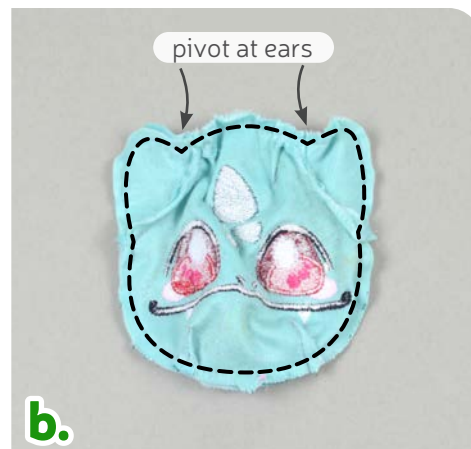
- a. Take both of your **HEAD BACK** pieces (C) and align them with right sides facing and raw edges matching up.
- b. If you haven't already, locate the **opening for turning markings** found on the paper pattern for the head back. Transfer them over to the wrong side of the fabric. Sew the head back pieces together along this edge, but leave an **opening for turning** in the middle.
- c. Open up the pieces when complete.

sew desu ne?

| [WWW.CHOLYKNIGHT.COM](http://WWW.CHOLYKNIGHT.COM) |

- a. Grab both of your **HEAD FRONT** and **BACK** pieces. Align them with right sides facing and the raw edges matching up. For extra help, there are **center top** and **bottom markings** on the head front that will match up with the **head back seam**. The **EARS** and **ear seams** should also align.
- b. Sew the head front to the back all the way around the shape. Be sure to pivot at the ear seams.
- c. Clip the seam allowances at the ear seams to help increase flexibility at those corners.
- d. Turn the head right side out through the opening in the back of the head.

## 10. SEW THE HEAD

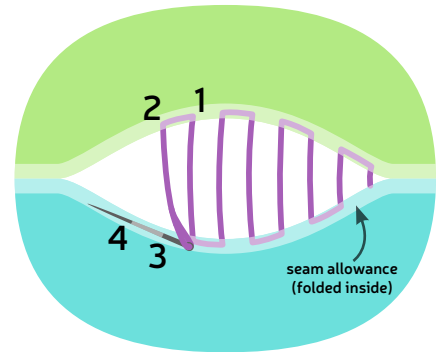
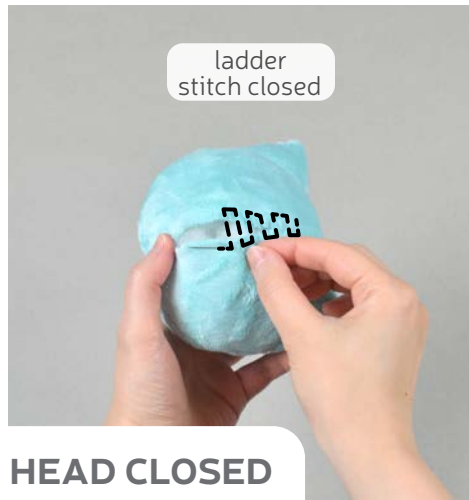


- a. Take your sewn head and stuff it firmly with stuffing. Be sure to get plenty of stuffing in the face and near the **darts**. The corners where the ears meet the head will also need a bit more stuffing. There should be no wrinkles in the fabric when complete.
- b. Once the corners and other troublesome areas are full, fill up the rest of the head.



sew desu ne?

| WWW.CHOLYKNIGHT.COM |

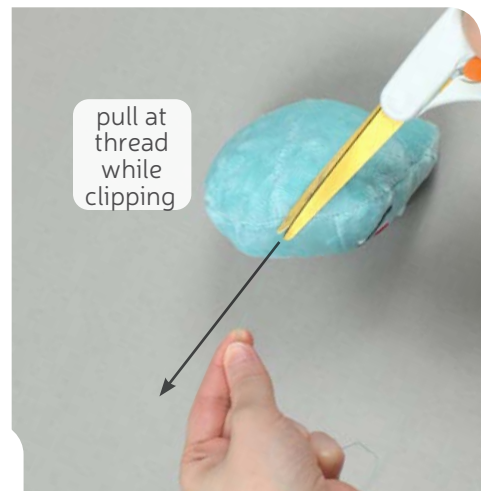


## 12. LADDER STITCH THE HEAD CLOSED

- Tuck the seam allowances from the opening inside. Thread a hand-sewing needle and knot it at the end. Insert the needle from the inside of the opening and out of the plush near one edge of the opening. This will leave the knot inside the plush.
- Sew the head closed with a ladder stitch. Take a 1/8" stitch into the fold of one side of the opening, then go across and take another. Keep going down the opening until you reach the end.

- When you're finished, stitch a knot into the end of the seam. Then insert the needle near the finished knot and out of the plush about 1-2" away.
- Pull the thread through and hold it taut while snipping the thread. The excess thread should sink back inside the plush -- all hidden!

→ ***This completes the head! Set it aside for a moment while we work on the body.***

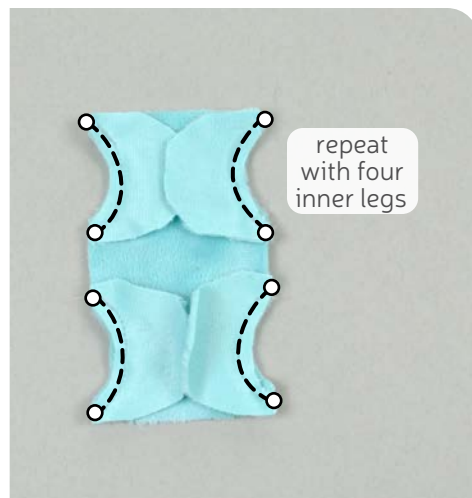
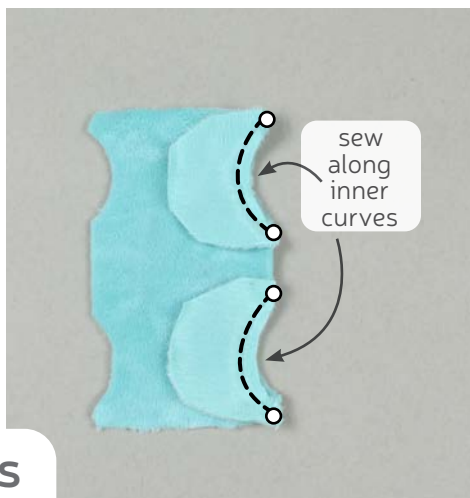
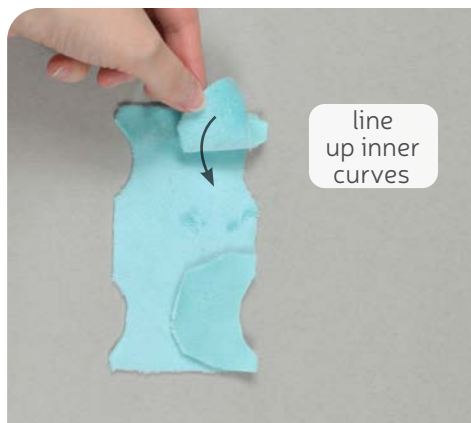


## 13. TRIM THE THREADS

sew desu ne?

| WWW.CHOLYKNIGHT.COM |





## 14. SEW THE INNER LEGS

- Grab your **BELLY** (E) and **INNER LEG** pieces (F). Line up the short inner curves of both the inner leg and belly pieces so right sides are facing. The curves are identical, so they should line up very easily.
- Sew the inner leg to the belly along just the inner curve. There are also **open circle markings** to line up at those points for extra help.
- Repeat with all four inner leg pieces along both sides of the belly.



## 15. SEW THE BODY TO THE BELLY

- Grab your **BELLY** piece so far and one of the **BODY** (G) pieces. The legs of both of these pieces will be sewn together next.
- Align the **INNER LEGS** (F) with the body along the curved edges. When the pieces are aligned, the **open circle markings** should match up.
- Sew the inner legs to the body along the curved edges, as well as the short space between them along the belly.  
You'll need to pivot at the corners to go around each curve. There will also be some bulk here due to the previous seams, so take it slowly.

sew desu ne?

| [WWW.CHOLYKNIGHT.COM](http://WWW.CHOLYKNIGHT.COM) |



a.



b.



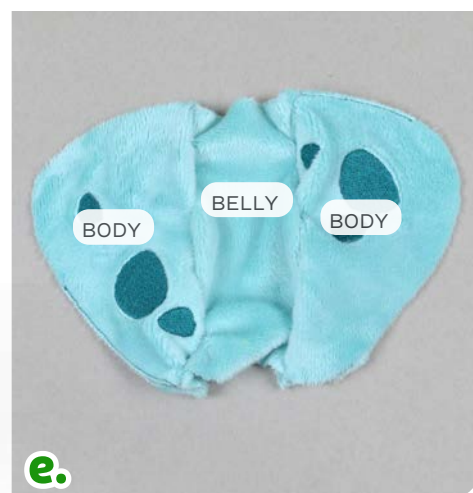
c.

## 16. SEW THE OTHER SIDE OF THE BODY

- a. Open up your pieces when complete so you can see the other **INNER LEG (F)** pieces on the **BELLY (E)**.
- b. Align your other body piece over the belly so the inner legs and **circle markings** match up.
- c. Sew the belly to the body the same as before, pivoting around each leg.
- d. Open up your **BELLY** and **BODY** piece so far. From the wrong side, it should look like photo D.
- e. Flip the body over so the belly is in the center and the right side of the fabric is facing up.



d.



e.



sew desu ne?

| [WWW.CHOLYKNIGHT.COM](http://WWW.CHOLYKNIGHT.COM) |

- a. Grab your **BACK** piece (H). Take one short end and center it over one end of your belly.

→ *The belly will be a little narrower than the back along this edge because the belly has already been sewn to the legs. So it no longer has seam allowances on the sides.*

- b. Sew the back to the belly along this short edge, in between the seams from steps 15-16. This will leave about ¼" of fabric free on each side of the back piece. (This will be attached to the **BODY** shortly).
- c. Line up the other end of the back to the other side of the belly.
- d. Sew the other end of the back to the belly the same as before.

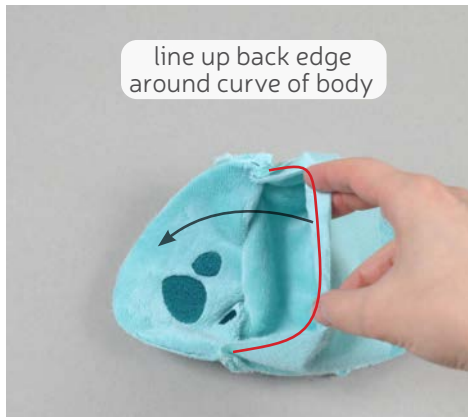
## 17. ATTACH THE BACK



- a. Grab your newly joined **BACK** (H) piece. One edge of this piece will be joined around the curved edge of the **BODY** (G).

Take your back piece and align one edge around the curve of the body. Pin from corner to corner, aligning around the curve.

- b. Sew the back to the body along this edge. Note that you can sew a little beyond the corner into the **LEG** pieces to ensure there are no holes there later.



## 18. SEW THE BACK TO THE SIDES

sew desu ne?

| WWW.CHOLYKNIGHT.COM |





## 19. SEW OTHER SIDE OF BODY

- Repeat step 18 with the other side of the **BACK** (H) and the other **BODY** (G) piece. Line up the edges around the curve of the body.
- Sew the other side of the back to the body along this edge, but this time leave an **opening for turning** as indicated on the paper pattern.
- The third photo shows how it will look with both sides attached. It should make a 3D shape now.

- Make clips into the seam allowance at the corners where the legs meet the body. This will help increase flexibility when the body is turned right side out.
- Turn the body right side out through the **opening** in the side that you left before. Check the corners at the legs to ensure there are no holes left in the shape.



## 20. CLIP & TURN THE BODY

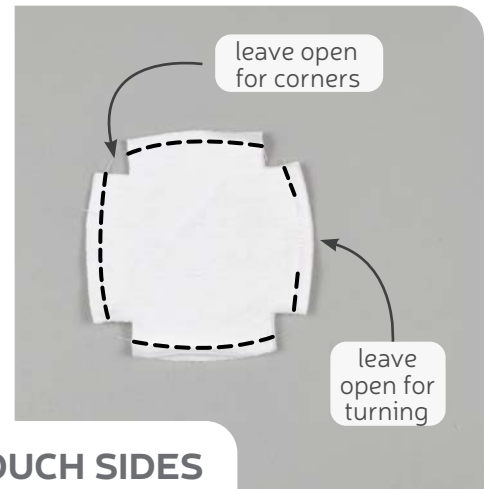
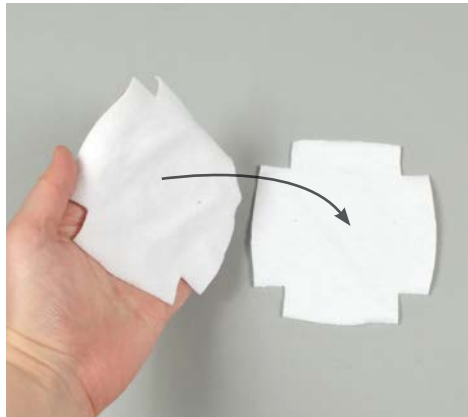
sew desu ne?

| [WWW.CHOLYKNIGHT.COM](http://WWW.CHOLYKNIGHT.COM) |



→ *Bulbasaur has a rather large head that offsets the tiny body, so this plush needs an extra large pellet pouch to outweigh it. This pouch has a few extra steps than the typical pouch to really get the maximum pellets in a small space.*

- a.** Grab your **PELLET POUCH** pieces (I). Align them with right sides facing and raw edges matching up.



## 21. SEW THE PELLET POUCH SIDES

- b.** Sew the pieces together along the longer, slightly curved edges. Leave an **opening for turning** in one side. Also leave the corners open for sewing the **darts** next.

- a.** Grab one of the open corners of the pellet pouch and pinch it so the side seams (from step 21) match up.
- b.** Flatten and line up the raw edges and this will be the corner of the pouch.
- c.** Sew along this edge as if it were a **double-ended dart**. It doesn't need to be pretty since the finished dart won't be seen.
- d.** Repeat this step with the other three corners of the pouch so it has four sewn corners total.

## 22. SEW THE PELLET POUCH CORNERS



sew desu ne?

| WWW.CHOLYKNIGHT.COM |

- a. Get your poly pellets and a funnel (I prefer a spoon, but both work). Fill the **POUCH** (I) with poly pellets until it's just about full. Stitch the pouch closed using a hand-sewn backstitch or whip stitch.
- b. Stuff the pouch into the body of your Bulbasaur through the opening left earlier.
- c. Push it into the back end of your Bulbasaur so it takes up the entire hindquarters. For the best results, squeeze it back very tightly so all of the weight of your pellets are in the back.
- d. Stuff the back legs from beneath the pellet pouch. Get lots of stuffing in all the legs so they're very firm -- they need to support the weight of both the body and the head. Finally fill up the rest of the body.

## 23. STUFF THE BODY



## 24. TRACE THE NECK PLACEMENT LINES

- a. Ladder stitch the opening of the body closed similar to the head back in step 12.
  - *Joining the head of the Bulbasaur to the body can be a little awkward, so the paper pattern has some stitching guides for extra help. Transfer them over by cutting them out of the paper pattern and using them as a tracing guide onto the plush.*
- b. For the **HEAD**, the **stitching guide** is transferred from the **HEAD BACK** piece (C). One half of the **stitching guide** can be drawn at a time on each half of the head back.
- c. For the **BODY**, the **stitching guide** is transferred from the **BACK** piece (H) and traced onto the front half of the body (the wider end).

sew desu ne?

| WWW.CHOLYKNIGHT.COM |

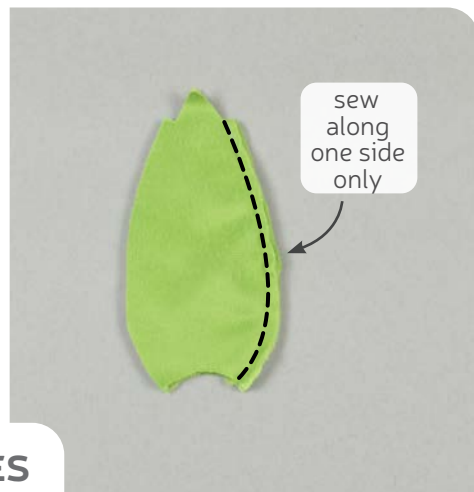


## 25. ATTACH THE HEAD

- Take your **HEAD** and align it over the **BODY**, matching up the **stitching guides**. Make sure the Bulbasaur's head is facing forward. The stitching guides have **top, bottom, left, and right markings** to help keep everything from twisting.
- Attach the head to the body by taking big stitches into the guide on the head, then another into the guide on the body. Keep going around taking big stitches and ensuring that the markings match up.
- Once you've gone around once, check that you like the placement and the head isn't tilted or twisted. Then go around the guide again with tinier, neater stitches to secure the head for sure.

UP NEXT IS THE BULBASAUR **BULB** (J-L). IF YOU'RE MAKING A **PUMPKIN** (L-O), SKIP AHEAD TO STEP 34.

- Grab all of your **BULB SIDE** pieces (J). Take two of them and align them with right sides facing and raw edges matching up.
- Sew them together along just one of the longer sides. Leave the point at the top alone as well as the small curve at the bottom.



## 26. SEW THE BULB SIDES

sew desu ne?

| [WWW.CHOLYKNIGHT.COM](http://WWW.CHOLYKNIGHT.COM) |



## 27. FINISH THE BULB SIDES

- Open up your sewn **BULB SIDES** (J) when complete.
- Keep adding more bulb sides to the previous ones, repeating the instructions from step 26. Continue until you have 6 bulb sides all joined together to make one long strip.
- Flip the piece over so the right side is facing up.



## 28. ATTACH THE INNER BULB

- Grab your **INNER BULB** piece (K). Notice all the points along the top edge of your **BULB SIDE** pieces (J). Line up these points with the points on the inner bulb so right sides are facing and the raw edges of the fabric match up.
- Sew the inner bulb to the bulb sides along the pointed ends, going up and down each tight corner. For best results, back stitch a little at each corner so the seams are strong when you clip the seam allowances next. At the ends of the inner bulb, pivot straight off the edge.
- Trim the seam allowances at the corners of each point. This will help reduce bulk and increase flexibility when the piece is turned later.

sew desu ne?

| WWW.CHOLYKNIGHT.COM |





## 29. SEW THE BULB INTO A RING

- Flip up the **INNER BULB** (K) away from the **BULB SIDES** (J). Now the side edges from the inner bulb and bulb sides should make one continuous line.
- Fold the bulb in half so the side edges match up.
- Sew from the corner of the inner bulb piece down to the bottom corner of the bulb side. But leave an opening for turning in the middle so the bulb can be turned later. Also leave the bottom open for the **BOTTOM** piece (L) later.



## 30. SEW THE BULB TOP & BOTTOM

- Sew along the top curved edge of the **INNER BULB** to close up the top.
- Grab your bulb **BOTTOM** piece (L). Open up the bottom of the bulb you have so far. This opening should align around the bulb bottom. There are **notches** for the center top and bottom of the bulb to help you align the piece evenly. You can line them up with two opposite seams on the bulb sides.
- Sew the bulb to the bottom all around the circle.

sew desu ne?

| [WWW.CHOLYKNIGHT.COM](http://WWW.CHOLYKNIGHT.COM) |



### 31. STUFF THE BULB

- Turn the bulb right side out through the opening in the side and define the points at the top of the bulb with a chopstick or similar turning tool.
- Stuff the bulb lightly with stuffing, just enough so there are no wrinkles in the sides. Don't stuff the center area with the **INNER BULB** (K), we're going to be needle sculpting that next.
- Push in the center inner bulb area so it tucks inside the stuffing.



### 32. NEEDLE SCULPT THE BULB

→ *In this step we're going to needle sculpt the bulb so the inner center area is pulled inward.*

- Grab the longest hand-sewing needle you have, preferably a doll needle. Thread it with heavy duty thread (or double over your all-purpose thread). Insert the needle into the bottom center of your bulb.
- Push the needle through the entire bulb, then bring the needle out in the center of your **INNER BULB** piece (K). Pull the needle out and tug lightly at the thread. Push the needle back down into the same spot in the inner bulb.
- Pull the needle out of the bottom of the bulb and tug gently at the thread. This should pull the inner bulb further inside the center. Repeat this 1-2 more times and then tie off your thread at the bottom.

#### NEEDLE

#### SCULPTING:

A form of shaping on a finished plush using thread to pull in and contour areas of an otherwise smooth surface. Because it is done from the outside, it counteracts the outward force of the stuffing inside the plush.

sew desu ne?

| WWW.CHOLYKNIGHT.COM |



### 33. CLOSE UP THE BULB

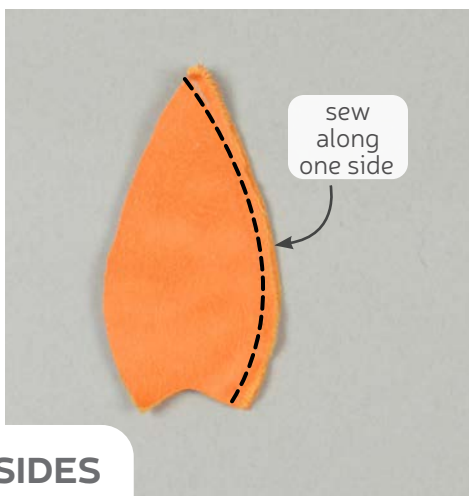
- To finish up the top of the bulb, sew a gathering stitch around the **INNER BULB** piece (K). Sew right underneath the points all the way around the top of the bulb.
- Pull at the thread to cinch the bulb closed. Sew a few knots into the top of the bulb to hold it closed.
- Finally, you can ladder stitch the opening in the bulb closed. You can now skip ahead to step 42 to attach it!

#### GATHERING:

The process of shortening the length of a piece of fabric by sewing long stitches through it. When the thread is pulled, it forms small folds that ruffle the fabric.

#### GATHERING STITCH:

A long version of the running stitch, which is a stitch done by weaving the needle in and out of a length of fabric going along a line. The long stitches (about 1/4"-1/2" long) gather the fabric when pulled later.



### 34. SEW THE PUMPKIN SIDES

- Grab your **PUMPKIN SIDE** pieces (N). Take two of them and align them with right sides facing and raw edges matching up.
- Sew the pieces together along just one of the long edges. Leave the other edges free.
- Open up the pieces when complete.

sew desu ne?

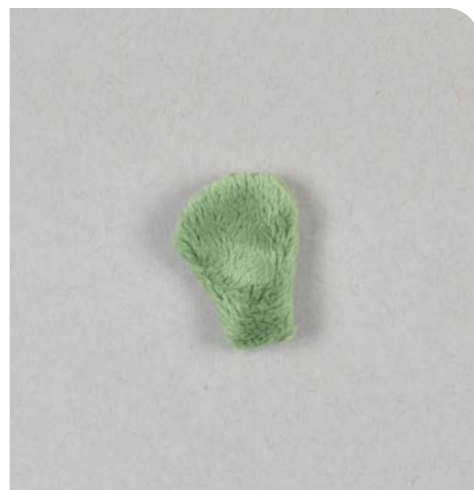
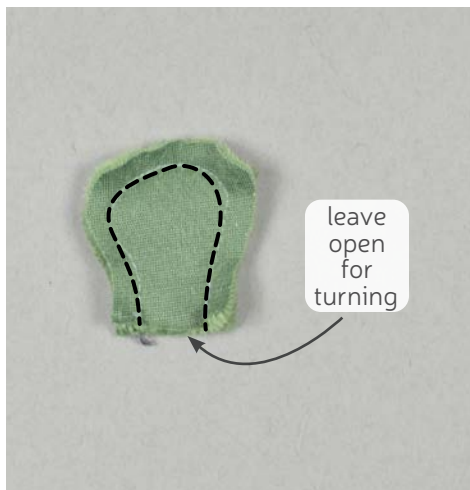
| WWW.CHOLYKNIGHT.COM |





### 35. COMPLETE THE FIRST PUMPKIN HALF

- Repeat step 34 with another one of your **PUMPKIN SIDE** pieces (N). Align it over the side of your pumpkin pieces so far so the right sides are facing and the edges on one side match up.
- Sew the third pumpkin side piece to the first two, starting at the sharp corner at the top, and working down to the corner at the bottom.
- Open up the pieces when complete, and this is the first half of your pumpkin!



### 36. SEW THE STEM

- Grab your **PUMPKIN STEM** pieces (O). Take both of them and align them with right sides facing and raw edges matching up.
- Sew them together along the upper curved edge. Leave the straight edge at the bottom free for turning it right side out.
- Turn the stem right side out.

sew desu ne?

| [WWW.CHOLYKNIGHT.COM](http://WWW.CHOLYKNIGHT.COM) |





### 37. BASTE THE STEM

- Stuff the stem lightly with stuffing so it plumps up and takes shape.
- Align the open edge of the stem along the center top of your pumpkin half. It should be right over the center where all the points are aligning.
- Baste the stem to the center of the pumpkin within the seam allowance to hold it in place for later.



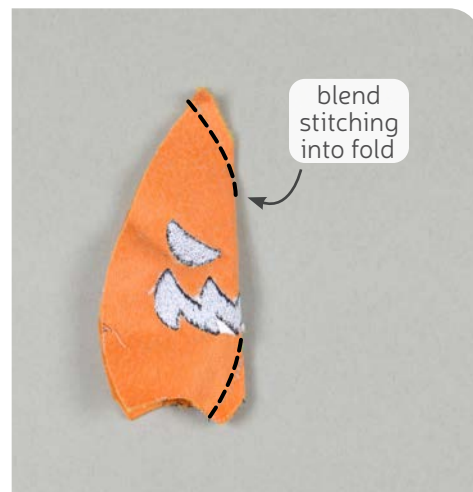
#### BASTING:

A form of temporary sewing meant to hold pieces in place. A long stitch length is often used for this reason. The finished result is not meant to be seen and sometimes is even removed later (depending on your project).



### 38. SEW THE PUMPKIN FACE

- Grab your **PUMPKIN FACE** piece (M). If you haven't already, make sure it has a face applied onto it as shown in step 3.
- We're going to sew the **darts** at the top and bottom. Start by folding the piece in half lengthwise to line up the slanted edges of the **darts**.
- Sew the **darts** similar to previous ones. Start at the opening, then gradually work down to the fold of the fabric.

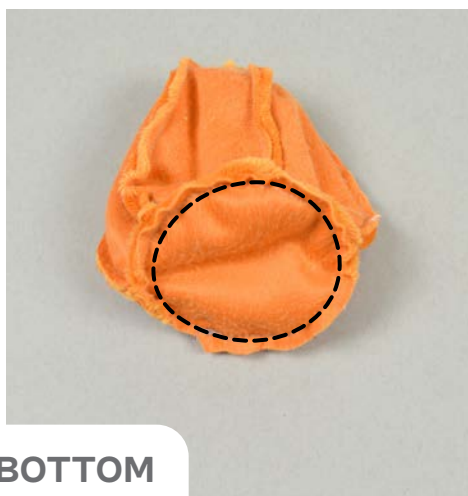
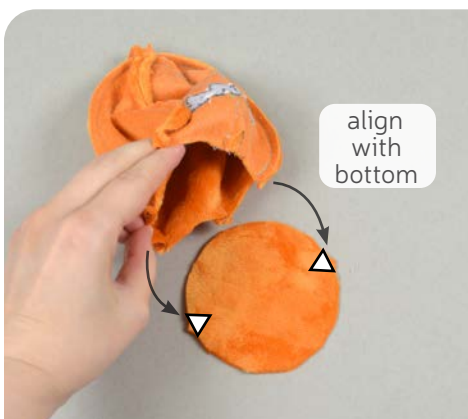
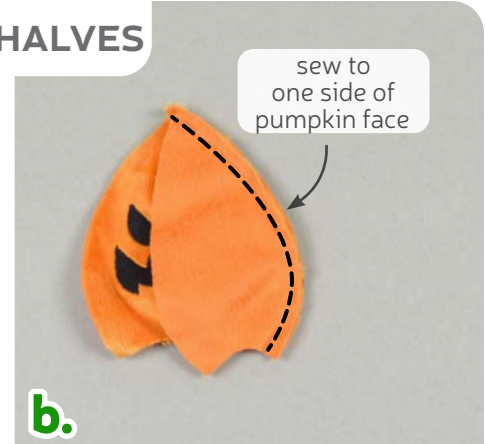


sew desu ne?

| WWW.CHOLYKNIGHT.COM |

- a. Open up the **PUMPKIN FACE** (M) when complete. Then grab your final **PUMPKIN SIDE** piece (N). Align it over one side of the pumpkin face similar to step 35.
- b. Sew the pumpkin side to one edge of the pumpkin face, starting at the sharp corner at the top to the corner at the bottom. This is now the front half of your pumpkin.
- c. Grab both of your pumpkin halves and align them with right sides facing and raw edges matching up. Make sure the stem is tucked inside.
- d. Sew the pumpkin halves together all around the upper curve, but leave an **opening for turning** about 2-3" long in one side for turning the piece later.  
Also leave the bottom curves open for attaching the **BOTTOM** next.

### 39. JOIN THE PUMPKIN HALVES



### 40. SEW THE PUMPKIN BOTTOM

- a. Grab your **BOTTOM** piece (L). Open up the bottom of the pumpkin you have so far. This opening should align around the bottom. There are **notches** for the center top and bottom of the bottom piece to help you align the piece evenly. You can align the notches with two opposing **PUMPKIN SIDE** (N) seams.
- b. Sew the pumpkin to the bottom all around the circle.

sew desu ne?

| [WWW.CHOLYKNIGHT.COM](http://WWW.CHOLYKNIGHT.COM) |



## 41. TURN AND STUFF THE PUMPKIN

- a. Turn the pumpkin right side out through the opening in the side. Stuff the pumpkin semi-firmly, just enough so it takes shape and there are no wrinkles in the fabric. Then ladder stitch the opening in the pumpkin closed. Check back to step 12 if you need a refresher on the ladder stitch.

### TIP:

If your Bulbasaur still leans forward after attaching the bulb or pumpkin, you can also put more poly pellets in the bulb or pumpkin to help with weight distribution.



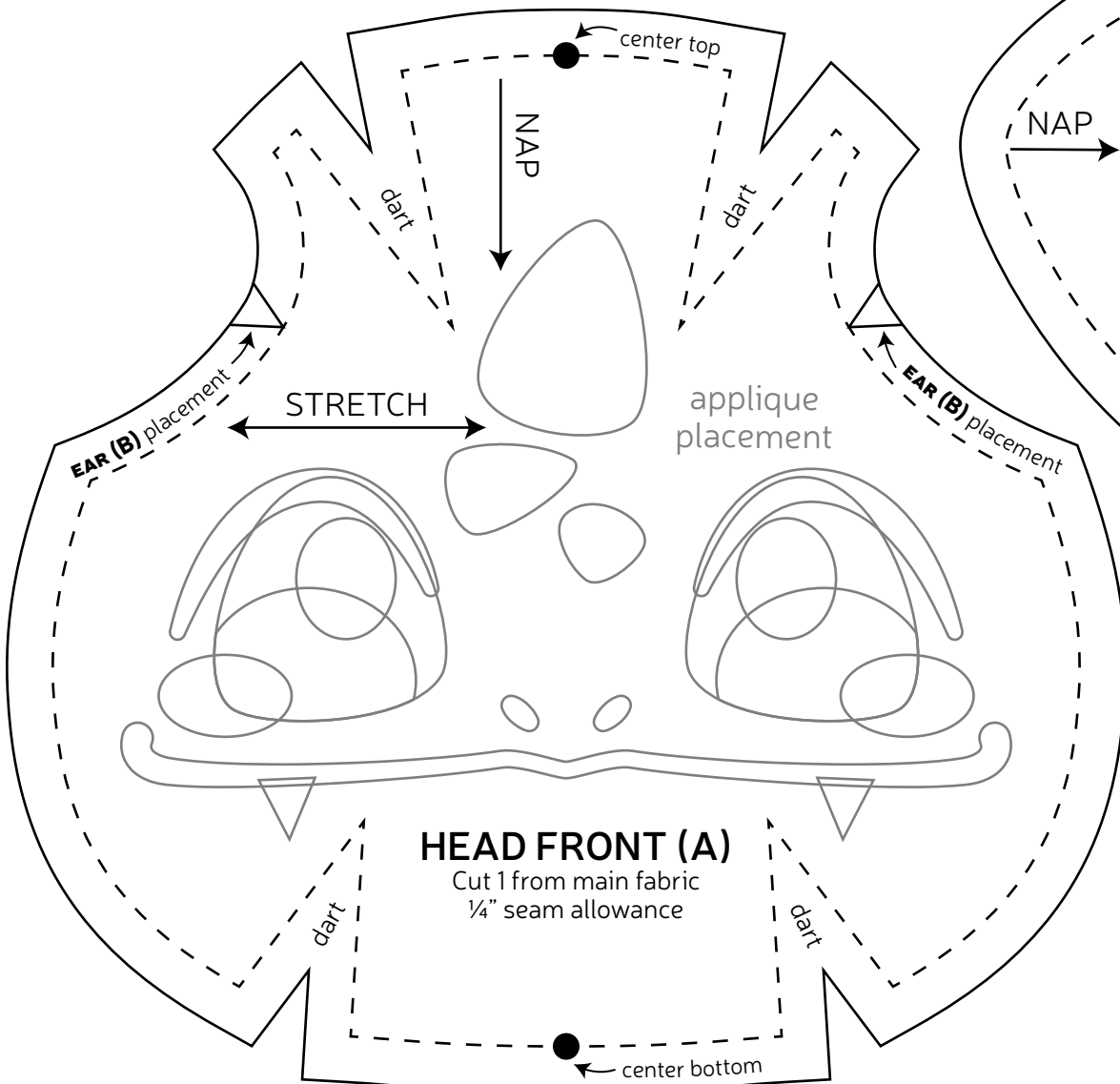
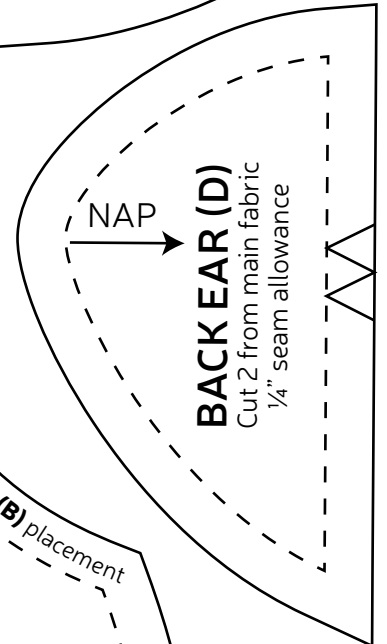
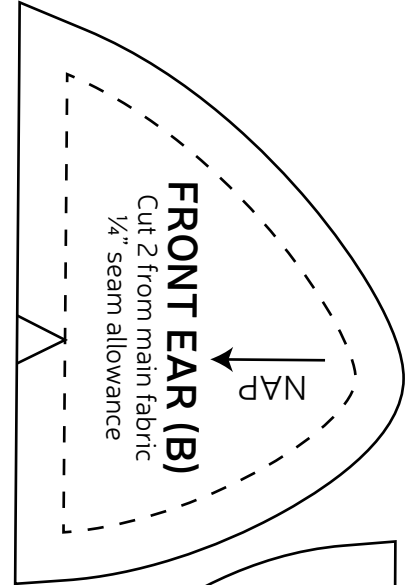
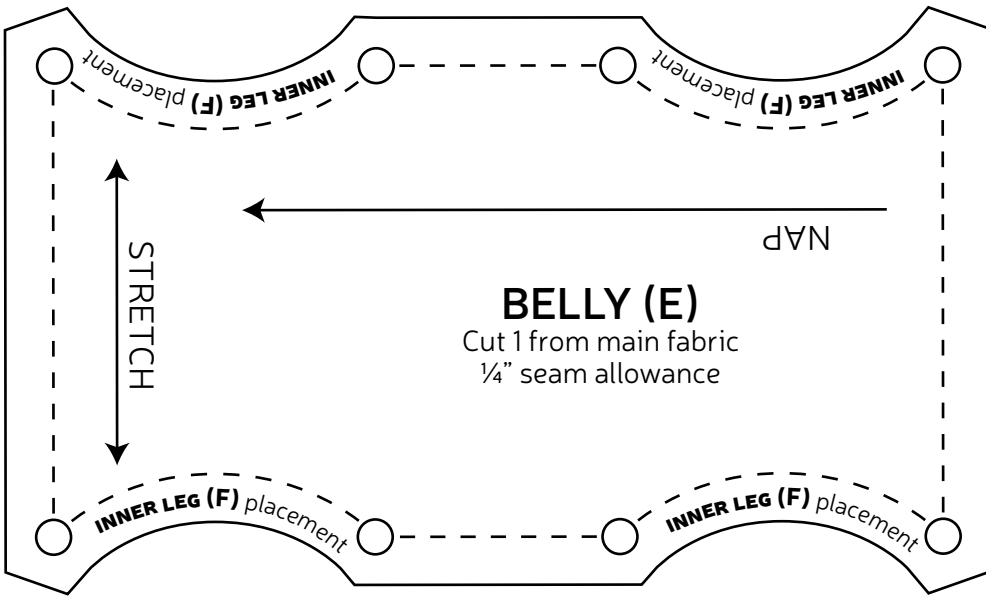
## 42. ATTACH THE PUMPKIN OR BULB

- a. Grab your Bulbasaur so far as well as your stuffed pumpkin or bulb. Align the pumpkin or bulb over the body of your Bulbasaur so it covers the back of the body and just barely touches the back of the head.
- b. Ladder stitch the pumpkin or bulb to the body of the Bulbasaur. You can use the **BOTTOM** (L) seam as a guide for ladder stitching. Use long basting stitches for the first pass around the piece. When complete, check that you like the placement and the piece isn't twisted or tilted.
- c. Then sew around the bulb again with tinier, neater stitches for the second pass.

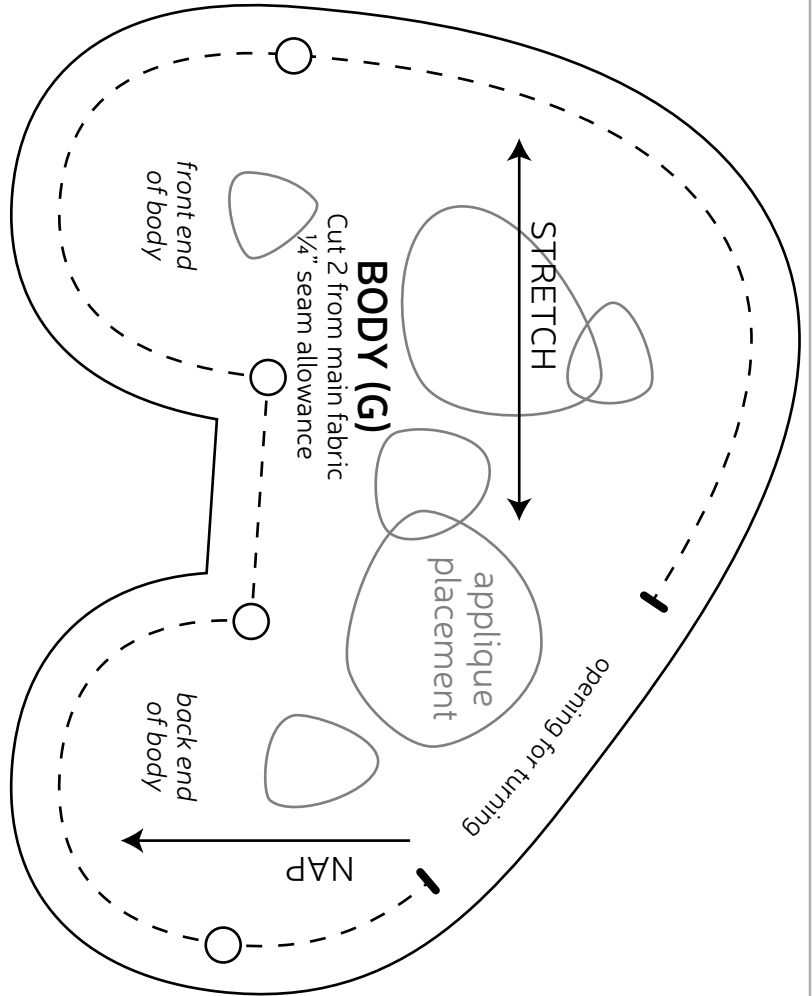
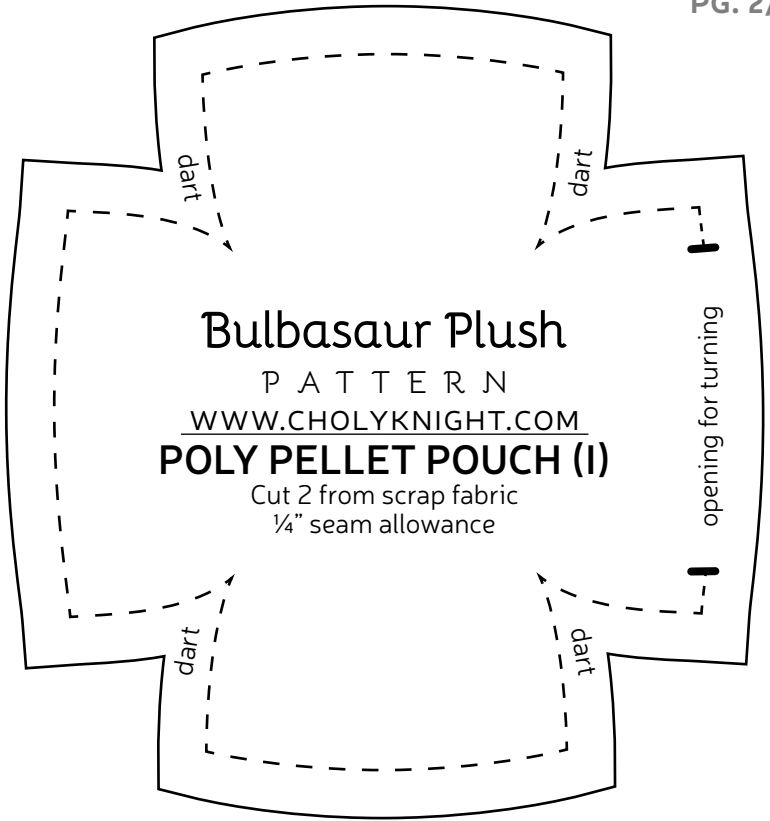
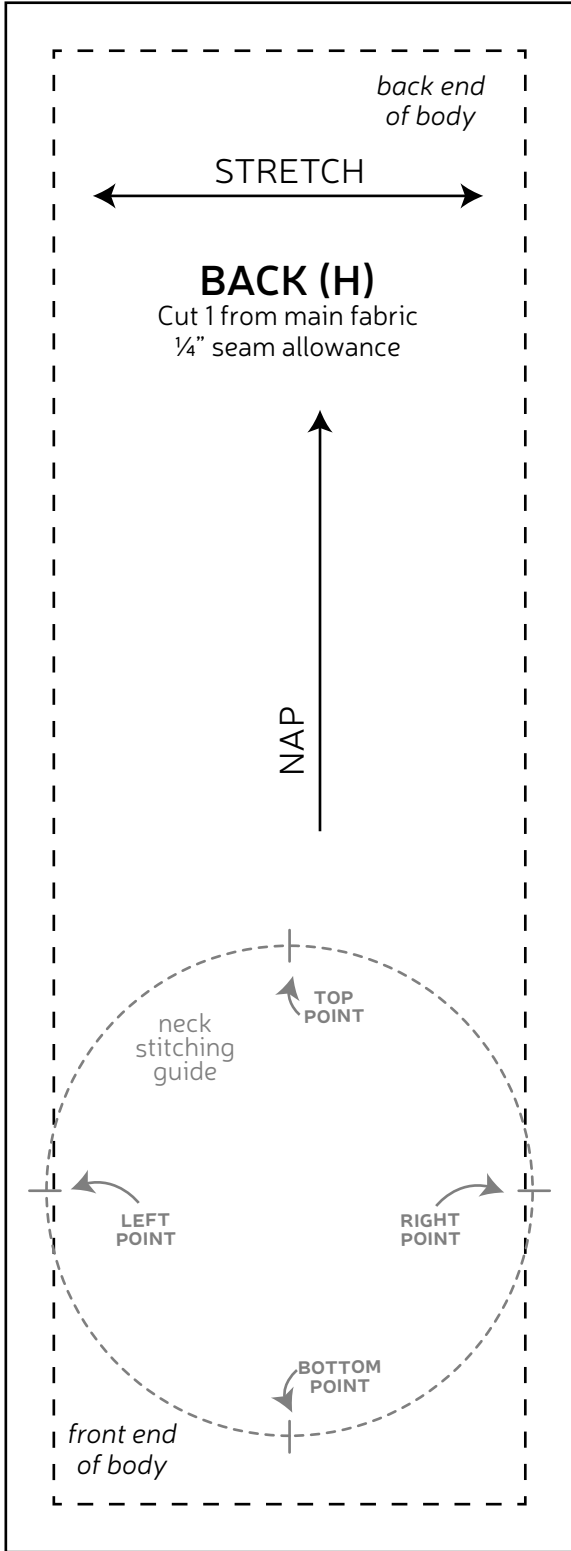
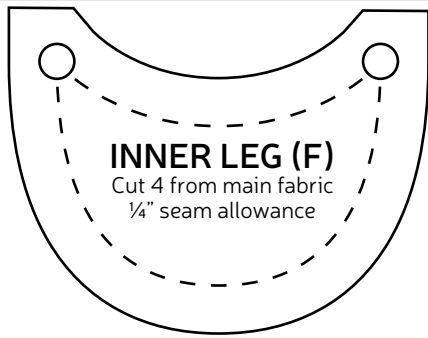


sew desu ne?

| [WWW.CHOLYKNIGHT.COM](http://WWW.CHOLYKNIGHT.COM) |







# Bulbasaur Plush

P A T T E R N  
[WWW.CHOLYKNIGHT.COM](http://WWW.CHOLYKNIGHT.COM)

## BOTTOM (L)

Cut 1 from accent fabric  
1/4" seam allowance

NAP

## INNER BULB (K)

Cut 1 from accent fabric  
1/4" seam allowance

STRETCH

NAP

NAP

STRETCH

## BULB SIDE (J)

Cut 6 from accent fabric  
1/4" seam allowance

edge for **BOTTOM (L)**

## HEAD BACK (C)

Cut 2 from main fabric  
1/4" seam allowance

STRETCH

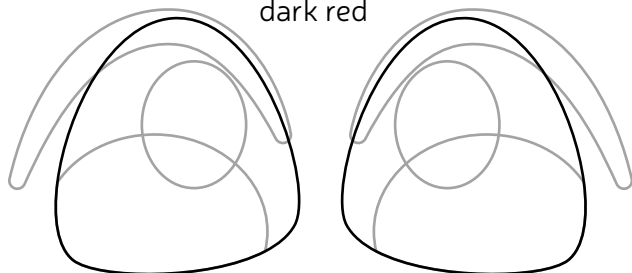
NAP

neck  
stitching  
guide  
LEFT/RIGHT  
POINT

opening for turning

**EYES**

*applique*  
trace & cut 1 each in  
dark red

**NOSTRIL**

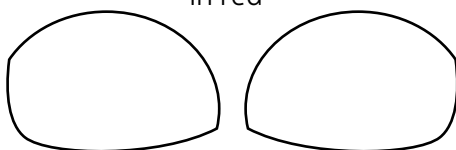
*applique*  
trace & cut 2 in  
black

**BLUSH**

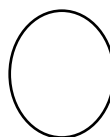
*applique*  
trace & cut 2  
in pink

**EYE HIGHLIGHTS**

*applique*  
trace & cut 1 each  
in red

**EYE SHINE**

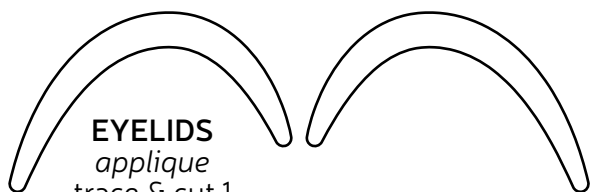
*applique*  
trace & cut 2 in  
white

**TOOTH**

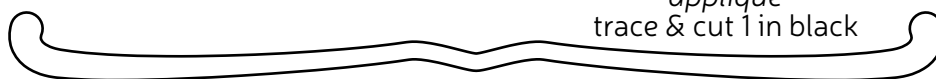
*applique*  
trace & cut 2 in  
white

**EYELIDS**

*applique*  
trace & cut 1  
each in black

**SMILE**

*applique*  
trace & cut 1 in black

**SPOTS**

*applique*  
trace & cut 1 each in  
dark teal

