

CHARMANDER plush



a free sewing pattern by



CHARMANDER PLUSH

Coming up right behind Bulbasaur is this cuddly Charmander! Those fans of fire-types are sure to love this fiery lizard. It actually shares the same body as the previous Pikachu and Vulpix plush but a little taller to set itself apart while also looking great as a set. It has a chubby body with tiny arms and legs. And of course it has its distinctive tail with attached flame.

DIFFICULTY:



The most difficult part is in sewing the snout. The shapes involved are a little strange to make room for the wide mouth. You'll need some patience matching up points and aligning the seams.

Also, there is a lot of hand sewing in both the arms, tail, and feet.

SKILLS USED:

- Fusible web applique
- Curved sewing
- Basting
- Darts
- Ladder stitch
- Sewing small pieces
- Matching notches and points
- Gathering; gathering stitch

MAKES:

ONE PLUSH: about 7" tall from bottom of body to top of head, 4" wide from each side of head, and 4" long from nose to back of body.



sew desu ne?

| WWW.CHOLYKNIGHT.COM |

MATERIALS & TOOLS:

- ¼ yd. of orange fabric for main body
- ¼ yd. (or 9" x 4") of yellow fabric for belly and tail
- ⅛ yd. (or 8" x 5") of red fabric for flame
- ⅛ yd. (or 4" x 3") of white fabric for claws
- 5" x 3" piece of black applique fabric (flannel, felt, fleece, cotton, etc.) for eyes and smile
- 2" x 3" scrap of accent applique fabric for eye highlights
- 2" x 2" scrap of white applique fabric for eye shines
- 3" x 3" scrap of yellow applique fabric for foot pads & inner flame
- 6" x 6" piece of light or heavy duty fusible web
- sewing thread to match main fabric and applique fabrics
- poly-fil stuffing
- basic sewing tools (sewing machine, scissors, iron, needles, pins, fabric marker, seam ripper)



MINKY VS. FELT



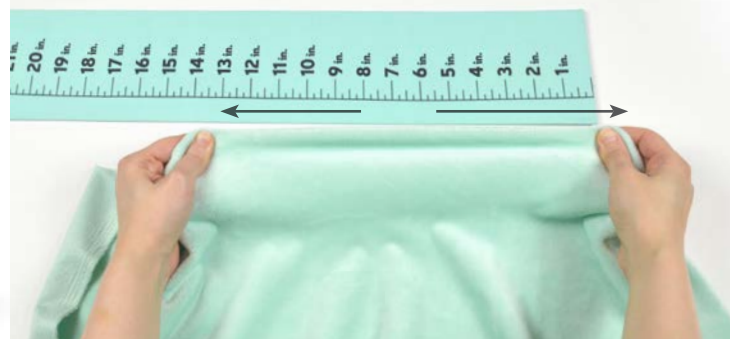
SUGGESTED FABRICS:

MINKY OR FLEECE

Medium weight, plush fabrics with about 20%-30% stretch along the crosswise grain work best for this project. The varieties shown to the left are some good options and names to look for. Try to avoid heavyweight versions of fleece that are intended for outdoor apparel or they may cause trouble for the detailed areas.

You can also use non-stretch fabrics (such as felt), but be aware that the curves will be more difficult to sew and the result will look different. The plush will become more elongated and the edges will look harder.

10" of minky stretches to 13" = 30% stretch



sew desu ne?

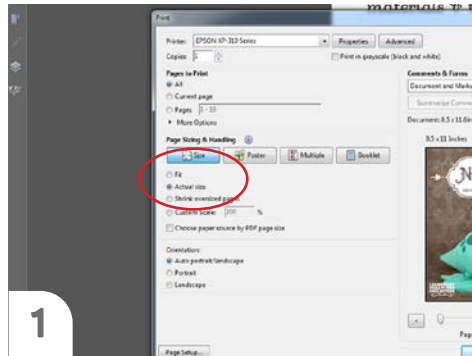
| WWW.CHOLYKNIGHT.COM |

PRINTING THE PATTERN:

Set your computer to print **PAGES 27-30.**

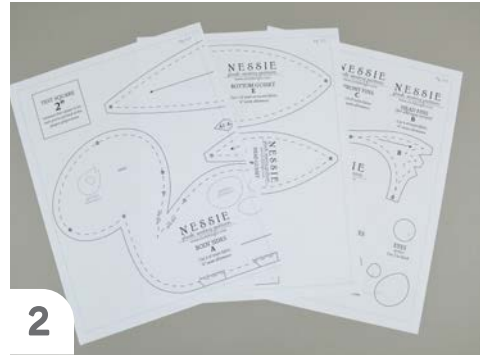
If you're unfamiliar with printing and assembling a .pdf pattern, read the steps to follow.

For the best results, use a .pdf reader like **ADOBE READER**. That's what is shown here and will give you the most control over the settings.



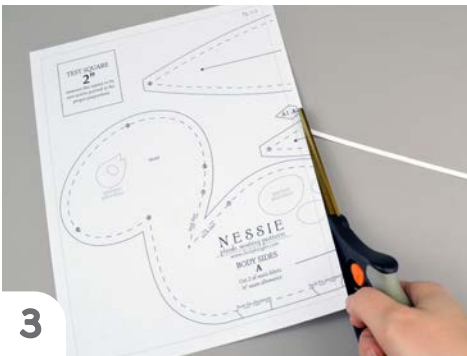
1

At the print dialog box, check the box that says print at "Actual Size" or 100%. Any other selection (such as "Fit to page") will distort the pattern so it's slightly larger or smaller and we don't want that.



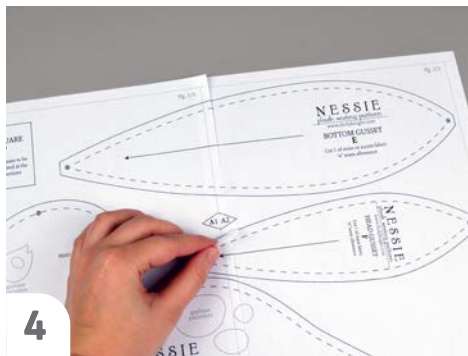
2

Print the pages needed for the file. You might have one or more. Either way, be sure you have the full collection by noting the page numbers in the corner.



3

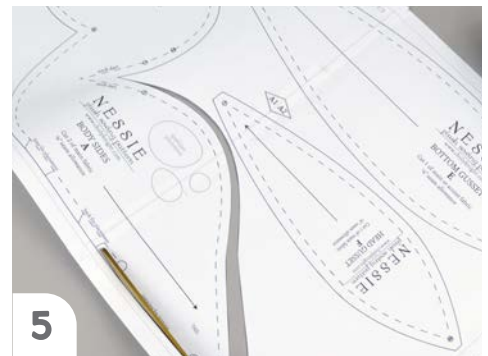
It's likely your printer will have a margin that ensures your image doesn't print to the very edge. Assembly will be easier if you trim off this blank margin edge. This will give you pages that overlap slightly during assembly. If you trim across the gray outline boxes, this will give you pages that don't overlap but rather butt against each other.



4

To line up the pattern pages, match up the corresponding diamond shapes. Each diamond will have a letter, so it's simply a matter of matching A1 to A2, B3 to B4 and so on. The faint gray lines indicate the border of every page, you should be able to line those up as well. When the diamond goes together, tape it in place.

If you have many pages, it's easier to tape up the pages into rows first. Then tape the rows together into a full block.



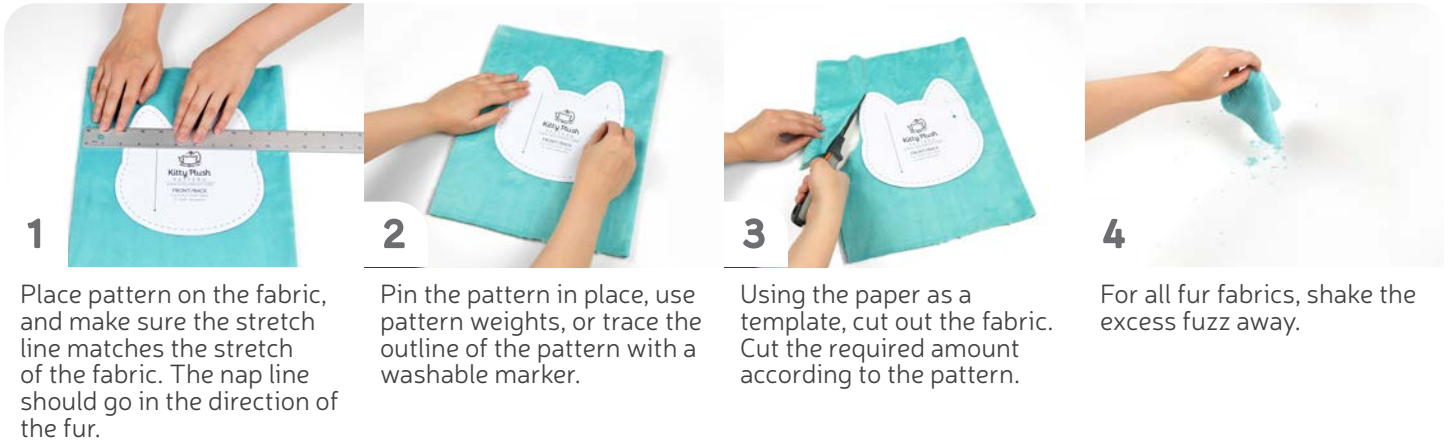
5

You can trace the patterns onto a different paper, or you can also just cut them straight from the printer paper -- be sure that each piece is fully taped together along the joins so they don't fall apart when you cut them.

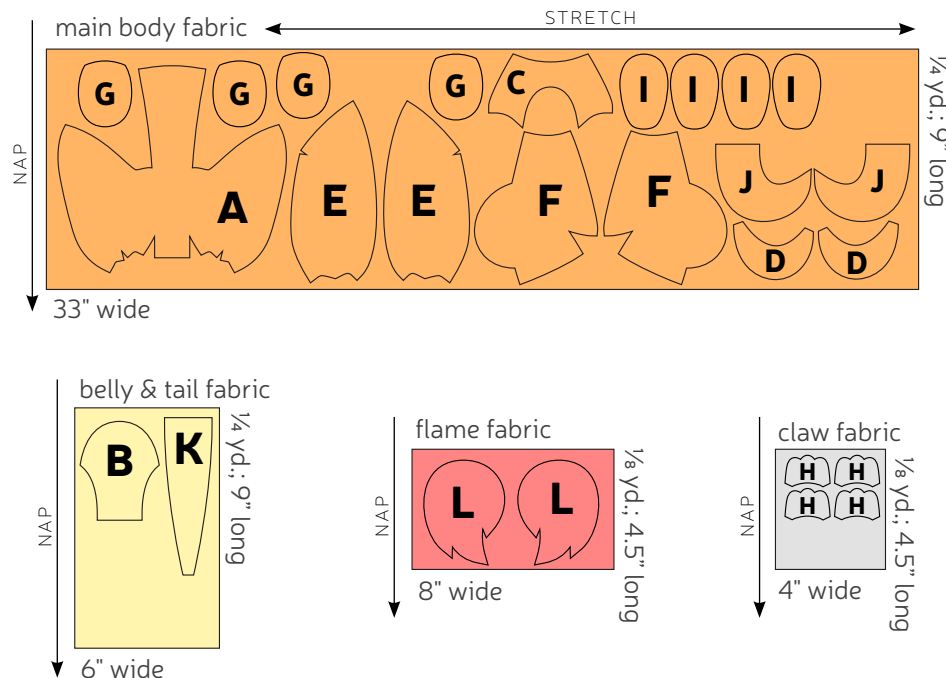
sew desu ne?

| WWW.CHOLYKNIGHT.COM |

CUTTING THE FABRIC:



CUTTING LAYOUT:



BEFORE YOU BEGIN:

- Briefly read the project instructions so you know what to expect.
- If desired, mark the cut fabric pieces with the markings and symbols from the pattern. Or wait until the applicable step before transferring.
- Note that a 1/4" seam allowance is used throughout the project, which is included in the pattern templates.

sew desu ne?

| WWW.CHOLYKNIGHT.COM |



1. PREPARE THE FACE APPLIQUE

- Grab your fusible web and trace all the applique pieces onto the smooth (paper) side. You should have 2 **eyes**, 2 **eye highlights**, 4 **eye shines**, 2 **nostrils**, and a **smile**. You'll also need **foot pads** and the **inner flame** for later.
- Fuse the bumpy (adhesive) side onto the wrong side of your applique fabric. The **eyes**, **nostrils**, and **smile** should be fused to black. The **eye highlights** on an accent color, and the **eye shines** on white. Cut out the face applique and grab your **HEAD FRONT (A)** piece.
- Set your paper pattern on top of the fabric piece (right sides up). Align the **eye** piece on top where the **placement markings** are. Then carefully slide the paper pattern away while holding the applique piece in place.



- Fuse the **eye** in place with your iron. Use a press cloth if you're using a polyester or fuzzy fabric like minky. A scrap piece of cotton works as a press cloth, and will help prevent the fabric from melting.
- Next, move onto the smaller pieces: the **eye highlights**, **eye shines**, **nostrils**, and **smile**. Fuse them the same way as you did the **eyes**, using the paper pattern and photos as a guide.
- If you're embroidering the face with a 4" x 4" hoop, you'll instead want to use the split up face pieces (A1 & A2). They'll look something like photo E. You could also use these pieces if you prefer to sew the head this way and would rather avoid the confusing darts (steps 3 & 4).

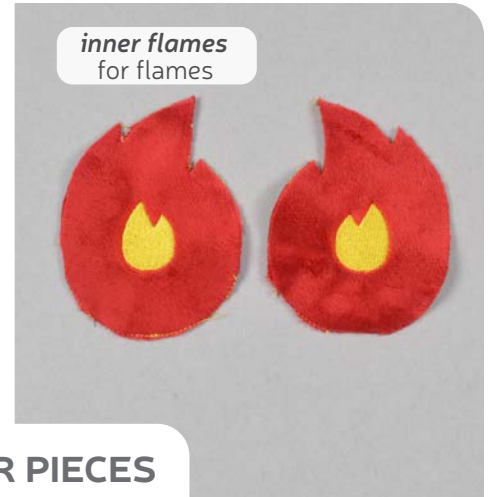
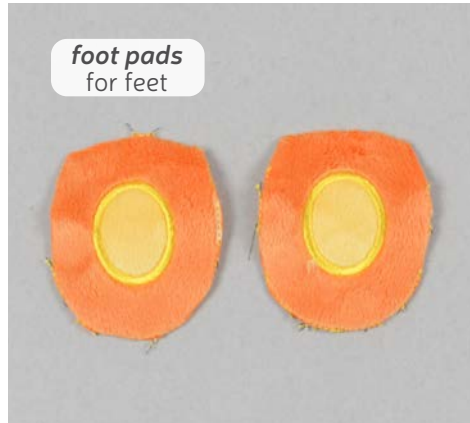
sew desu ne?

| WWW.CHOLYKNIGHT.COM |

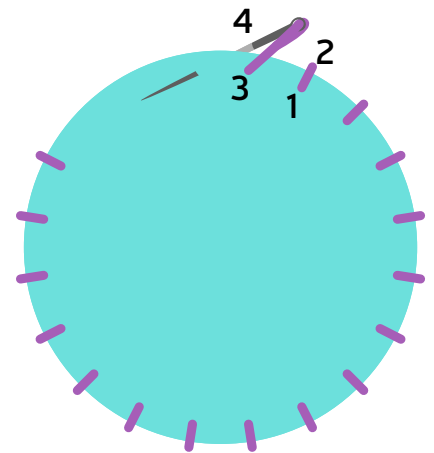
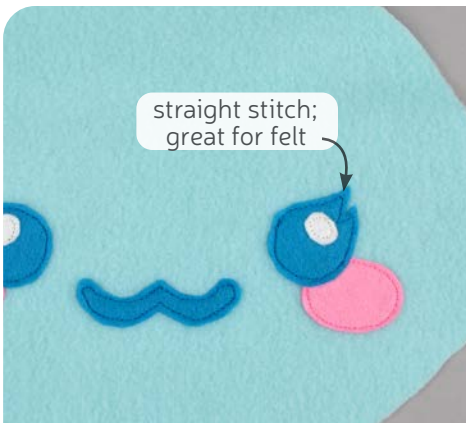
- a. Take this time to also applique your other body pieces using the same method. Two of the **FEET** (G) need **foot pads**.
- b. Meanwhile both **FLAME** pieces (L) need an **inner flame**.

If you used heavy duty fusible web, you can keep the pieces fused without sewing, or you can sew them in place a number of ways. I've used a zigzag stitch here.

→ Refer to the next step for some other applique options.



2. APPLIQUE THE OTHER PIECES



2a. OTHER APPLIQUE OPTIONS

- a. Other good options for applique include a straight stitch, which involves sewing around the edge of the applique pieces with a straight stitch using matching thread -- about 1/8" in from the edge.
- b. You can also applique by hand; I prefer a whipstitch. Thread a hand-sewing needle with some matching thread and knot it. Bring the thread up from the back of the project; about 1/8" in from the edge of the applique shape. Bring it down perpendicular from the curve, just outside of the applique shape. This completes one stitch.
- c. For the next stitch, bring the needle back up about 1/8" away from the previous stitch and 1/8" in from the edge just as in the first stitch. Once again, bring it down just outside the applique shape. Continue this way until you've sewn around the shape.

sew desu ne?

| WWW.CHOLYKNIGHT.COM |

- This first section is for the **HEAD FRONT** pattern piece (A). If you're using the split face (A1 & A2) for 4x4 embroidery hoops or just because you prefer that assembly, those instructions start on page 10.



3. PREP THE FACE DARTS

- Grab your **HEAD FRONT** piece (A). You'll see it has many **darts** all along the bottom neck edge and two large ones along the center top.
- For the easiest time sewing them, it helps to trace the seam line from the paper pattern for more accurate stitching. Trim away the seam allowance from the paper pattern, then use it as a tracing template on the back side of the fabric to mark the **dart** seam lines.
- It also helps to make a clip into the seam allowance at the corner of the nose. This is marked with **point 4** on the paper pattern. This will allow the fabric to stretch and bend better for the next step.

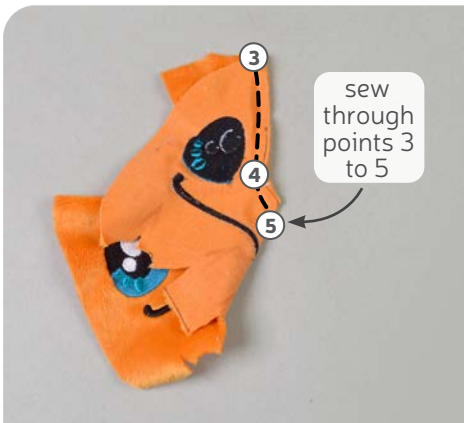


4. ALIGN THE TOP DARTS

- We're going to sew the top **darts** first, which are the trickiest. This will join the sides of the head to the center forehead area. It will also match up **points 3 and 4** and stop at **point 5**.
- Fold the fabric along **point 5** and match up the edges at **points 3 and 4** so right sides are facing.
- Hold the fabric at **point 5**, then stretch and bend the edge of the side of the head so the points match up. Pin the edges together.

sew desu ne?

| WWW.CHOLYKNIGHT.COM |



5. SEW THE DARTS

- Sew from the opening of the **dart** (at **point 3**) down through **point 4** to the end at **point 5**. Use the lines you traced in step 3 for extra help. Try to blend your stitching into the fold of the fabric for a smooth transition and rounder finish.
- Repeat with the **dart** on the other side of the forehead so both **darts** are sewn.
- You'll find the bottom also has several **darts**; two on each side. Sew these similarly to the previous ones. Fold the fabric along the point of the **dart**, align each edge, then sew from the opening down into the fold. Use the lines you traced in step 3 for extra help.



DARTS:

Darts are a v-shaped wedge sewn into a pattern piece that create a 3D shape in the fabric.

The two lines of the darts are sometimes called the **LEGS**. These lead up to the **POINT**.

You can think of darts like a partial seam. One that only goes part-way through the fabric.

- When complete, your face should have 6 **darts** total, 2 along the center top and 4 along the neck at the bottom.
- Turn the head right side out when complete.

→ **This completes the full face version of the HEAD FRONT (A). Skip ahead to page 12 to continue with the BELLY. The SPLIT VERSION (A1 & A2) is up next.**



6. FINISH THE FACE



turn right side out

sew desu ne?

| WWW.CHOLYKNIGHT.COM |



7. SEW THE BOTTOM DARTS

- Grab your **HEAD SIDE** pieces (A1). These pieces have small **darts** along the center bottom. They're the small triangular wedges cut into the fabric. To sew them, start by folding the fabric along the point of the **dart** so the right sides of the fabric are facing. Match up the slanted lines.
- Sew from the opening of the **dart** into the fold of the fabric. Try to blend your stitching into the fold for a smooth transition and a rounder finish.
- Repeat with both head side pieces so you have one **dart** sewn for each piece.



8. ALIGN THE SMILE

- Grab your **HEAD SIDE** (A1) and **HEAD CENTER** (A2) pieces. The nose curve of the head sides will be joined to the straight edge of the head center. But first we're going to ensure that the smile lines up perfectly.
- Begin by lining up one of the head side pieces with the head center so the smile lines match up for about $\frac{1}{4}$ ".
- Grab a hand sewing needle and thread it. Stitch the smile lines together about $\frac{1}{4}$ " away from the edge. Make sure your needle is going precisely through the smile on the head side, then through the smile on the head center. When the needle is positioned exactly, then you can pull the thread through and tighten the stitch.

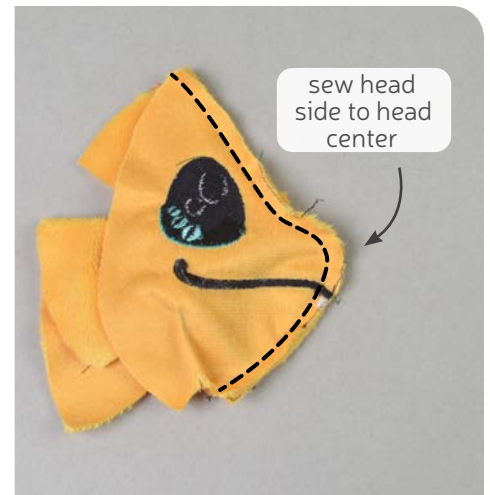
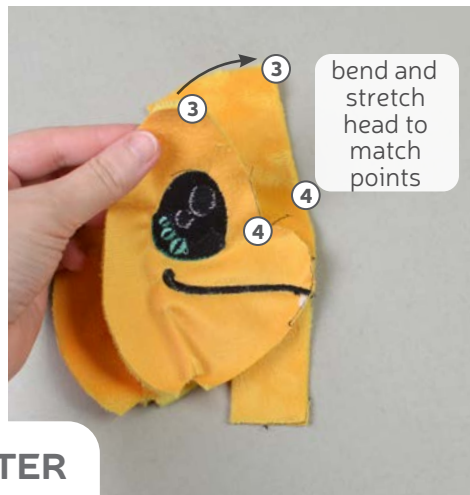
sew desu ne?

| WWW.CHOLYKNIGHT.COM |

- a. When the stitching from step 8 is done, open up the **HEAD SIDE** and **CENTER** pieces (A1 & A2) to ensure that the smile lines match up.
- b. Once complete, repeat with the other head side piece and the other side of the head center. These should join together to make the complete smile.
- In the next step we're going to join the head sides to the center and we can be sure that the smile will stay put and stay aligned.



9. SECURE THE SMILE



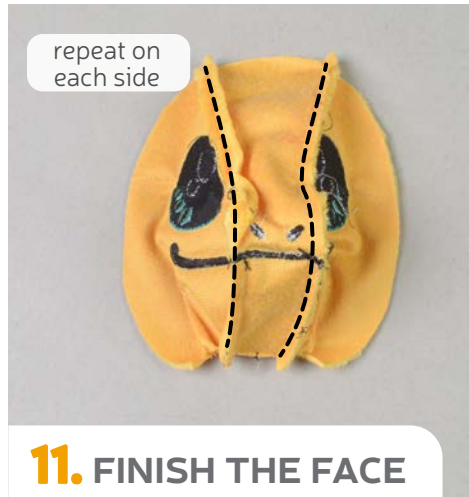
10. SEW THE HEAD CENTER

- a. To align the head pieces, it helps to make a clip into the nose corner of the **HEAD SIDE** (A1) at **point 4**. This will allow the fabric to stretch and bend better as you're aligning the edges.
- b. Align the head side to the head center, bending the fabric around the curves and stretching out the fabric at **point 4** so it straightens out a little and is easier to handle. Pin the fabrics together, matching up **points 3 and 4**.
- c. Sew the head side to the head center from the top, down and around the nose, then ending at the bottom for the neck.

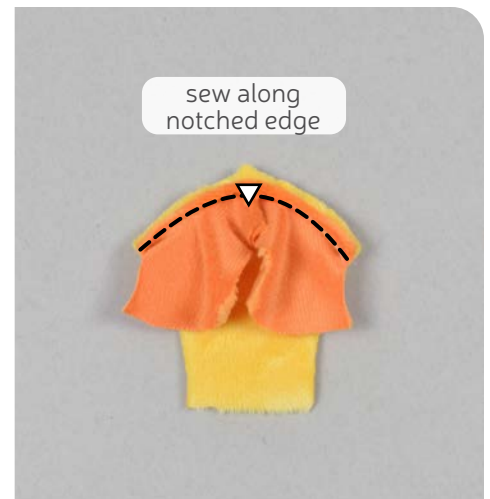
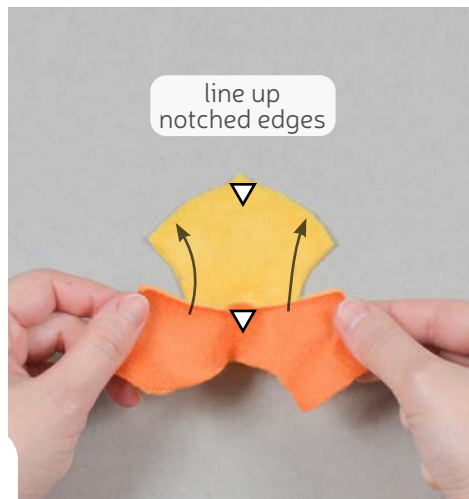
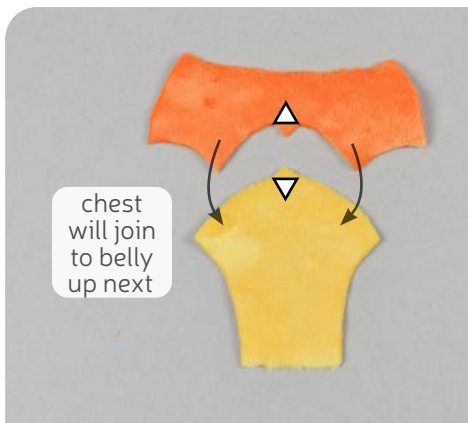
sew desu ne?

| WWW.CHOLYKNIGHT.COM |

- a. Repeat with the other **HEAD SIDE** fabric (A1) on the opposite side of the **HEAD CENTER** piece (A2). It should look something like the first photo with both pieces joined.
- b. Turn the head right side out to complete.



11. FINISH THE FACE

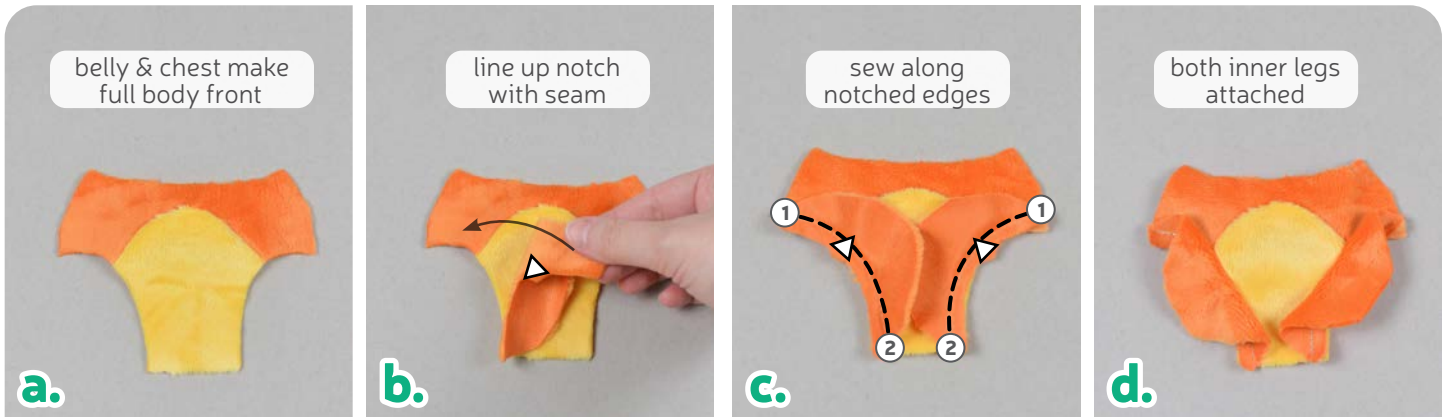


12. ATTACH THE BELLY

- a. Grab your **CHEST** (C) and **BELLY** (B) pieces. We're going to attach these pieces so they make one full body front piece. They're marked with **single notches** along the edges for easy identification.
- b. Bend and stretch the inner curve of the chest that has the **notch marking** so it matches up with the **notch** on the belly. Pin the fabrics together.
- c. Sew the chest to the belly along the **notched edge**.

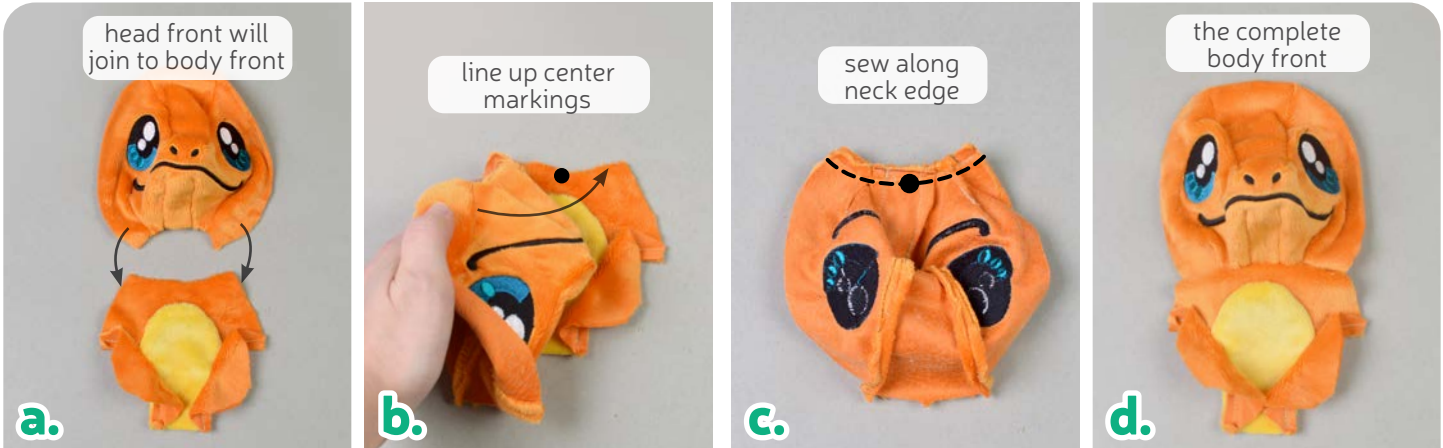
sew desu ne?

| WWW.CHOLYKNIGHT.COM |



13. SEW THE INNER LEGS

- Open up the chest and belly pieces and they should look like photo A.
- Grab your **INNER LEG** pieces (D). Align the inner curve of the inner leg with the inner curve of the body front. Match up the **notches** on the inner legs with the **belly seam**. They also have **numbered points**, points 1 and 2, which will be helpful later in step 21.
- Sew the inner leg to the body front along the inner curve from **points 1 to 2**. Repeat with the other inner leg piece so both are joined.
- When the pieces are opened up, it should look like photo D.

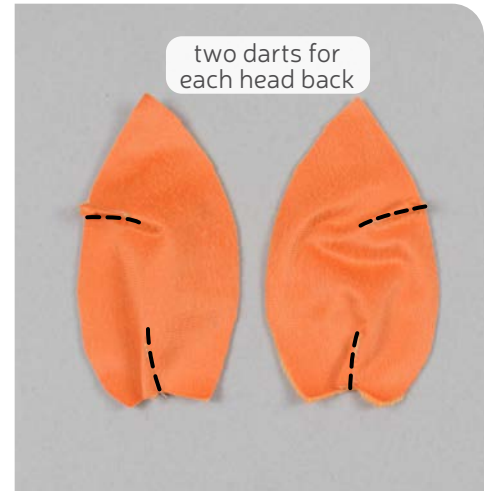
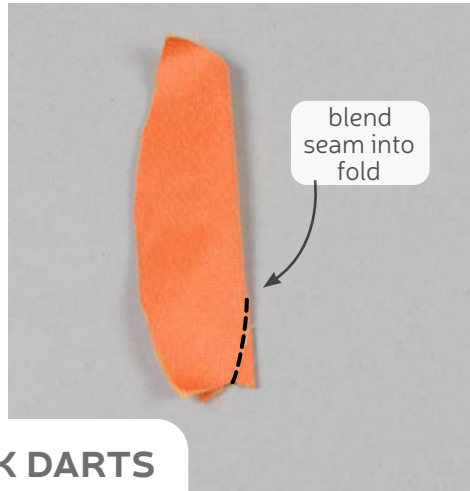
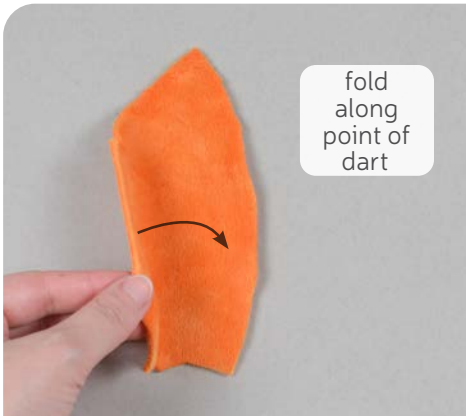


14. SEW THE FRONT NECK

- Grab your **HEAD FRONT** piece from before (A) and your **BODY FRONT**. The **neck edges** of both of these pieces will be joined next. The neck edges are marked with **circle markings** in the center for easy alignment.
- Layer the head front over the body front, matching up the raw edges and **circle marking** at the center. Pin the fabrics together.
- Sew the head front to the body front along this **neck edge**.
- Open up the pieces when complete.
 - ➔ **Set your body front aside for a while as we construct the back.**

sew desu ne?

| WWW.CHOLYKNIGHT.COM |



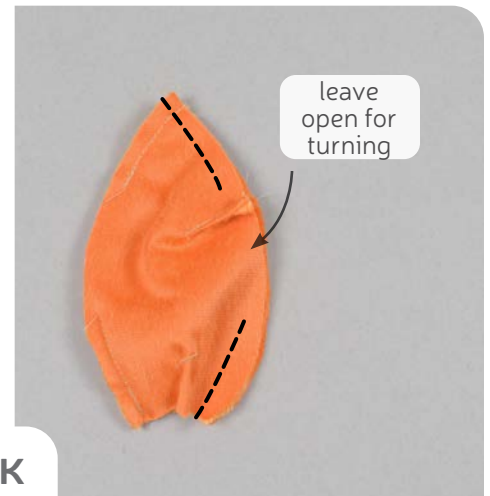
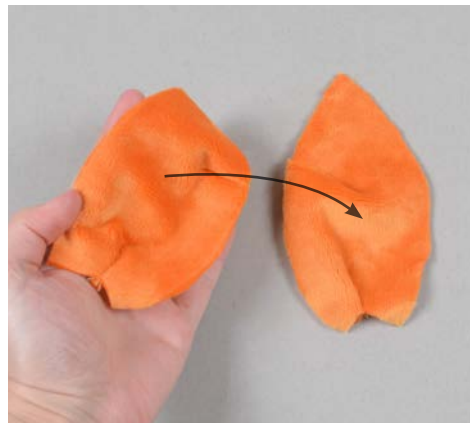
15. SEW THE HEAD BACK DARTS

- Grab your **HEAD BACK** pieces (E). These pieces also have several **darts** like the head front. Sew them the same way, starting by folding the fabric along the point of the **dart**. This should match up the slanted edges.
- Sew from the opening of the dart into the fold of the fabric.
- Repeat for both the bottom neck **dart** and the upper corner **dart**. Repeat this for both head side pieces so you have two total.

- Take both of your **HEAD BACK** pieces (E) and align them with right sides facing and raw edges matching up.

- If you haven't already, locate the **opening for turning markings** found on the paper pattern for the head back. Transfer them over to the wrong side of the fabric. Sew the head back pieces together along this edge only, but leave the opening that you marked. Open up the pieces when complete.

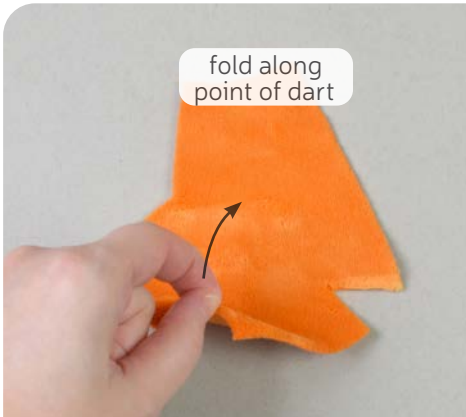
→ **Set aside your head back for a little while as we work on the body back.**



16. SEW THE HEAD BACK

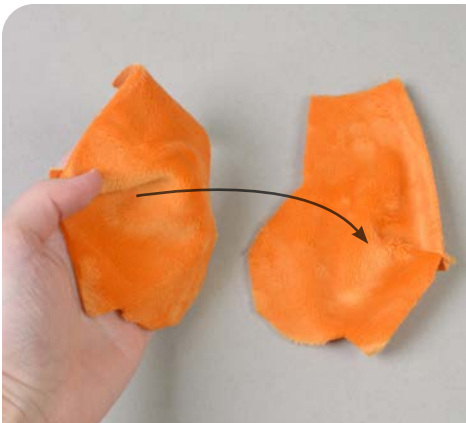
sew desu ne?

| WWW.CHOLYKNIGHT.COM |



17. SEW THE BODY BACK DARTS

- Grab your **BODY BACK** pieces (F). This piece also has a **dart**, found in the bottom corner. Sew it similar to the others, starting by folding it along the point of the dart and matching the slanted lines.
- Sew starting at the opening and work toward the point. Try to blend your stitching into the fold of the fabric. This will create a rounder finish for your plush.
- Repeat with your remaining body back piece for two total.

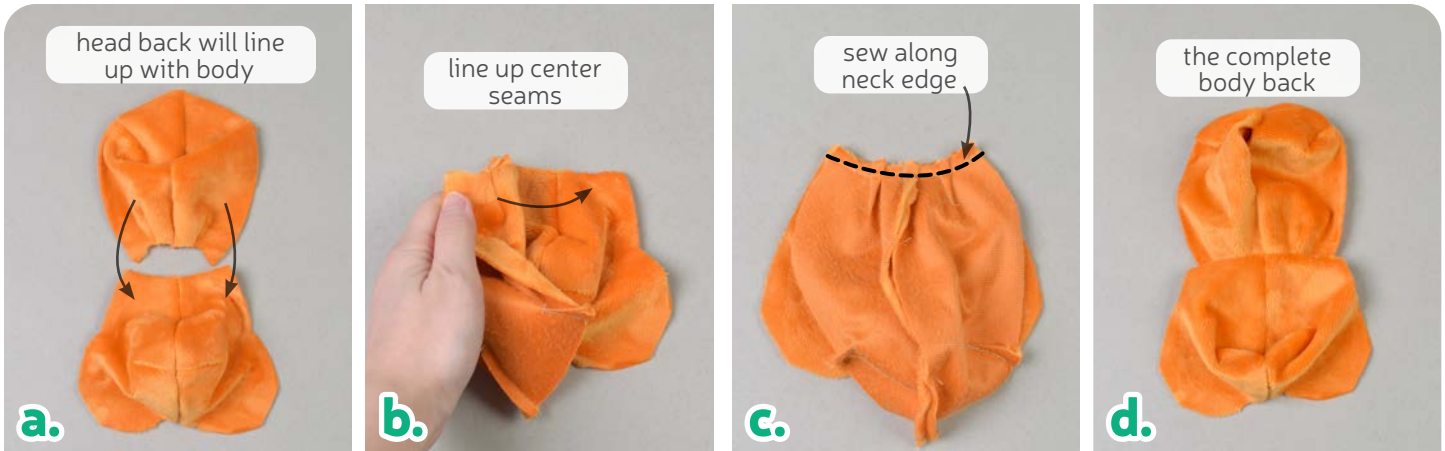


18. SEW THE BODY BACK

- Take your two **BODY BACK** (F) pieces and align them with right sides facing and raw edges matching up.
- Sew them together along the edge with the **dart** from the previous step.
- Open up the pieces when complete.

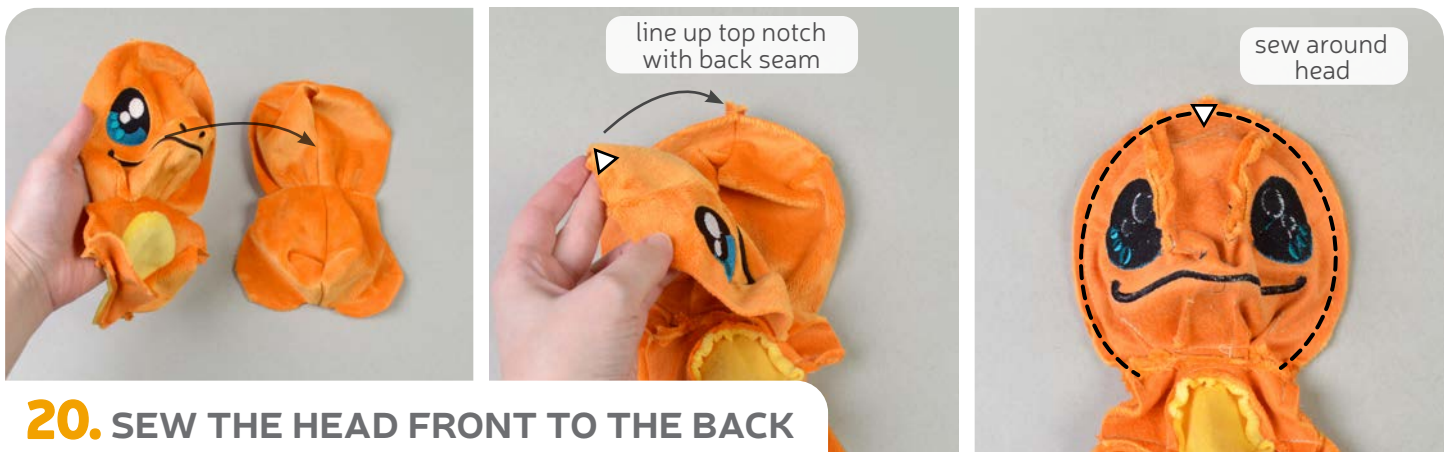
sew desu ne?

| WWW.CHOLYKNIGHT.COM |



19. SEW THE BACK NECK

- Grab your **HEAD BACK** pieces from before (E) and your **BODY BACK** (F). The **neck edges** of both of these pieces will be joined next.
- Layer the head back over the body back, matching up the raw edges and the **center seams**. Pin the fabrics together.
- Sew the head back to the body back along this **neck edge**.
- Open up the pieces when complete.



20. SEW THE HEAD FRONT TO THE BACK

- Grab both of your front and back pieces so far. Align them with right sides facing. We're going to sew around the entire body. Experts should be able to handle this all in one go, but we're going to break it down into several parts for beginners.
- Start by aligning the head pieces. Match up the **center top notch** with the **head back seam**. The neck seams (from steps 14 and 19) should also match up.
- Sew the head front to the back all the way around, starting at one side of the neck and going to the other.

sew desu ne?

| WWW.CHOLYKNIGHT.COM |

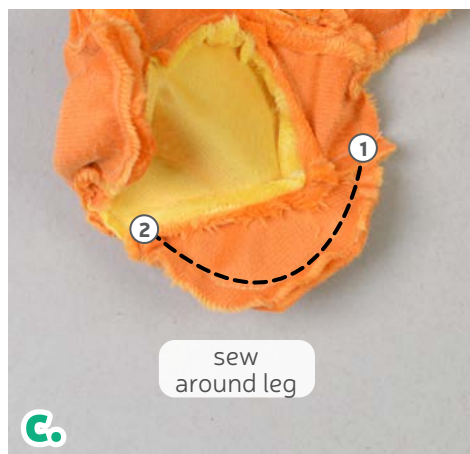
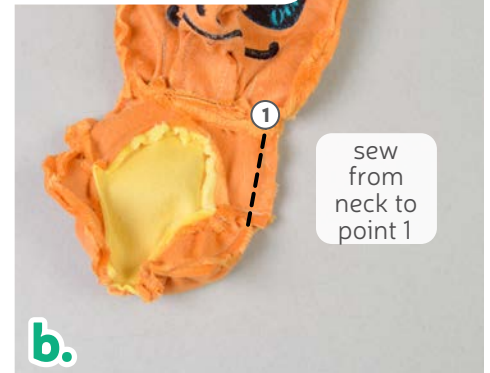
a. Next, line up the **BODY** pieces. This is the edge starting at the neck and going down to **point 1**. Then pin the **INNER LEG** (D) to the outer curve of the **BODY BACK** (F). It starts at **point 1** and goes around to **point 2**. Repeat on the other side with the other leg. Pin the fabrics together.

b. Sew from the neck down to **point 1** at the top of the leg.

c. Next sew around the leg, from **point 1 to point 2**.

d. At the edge between the legs, the **center circle marking** on the **BELLY** (B) will match up with the **back seam** (from step 18). Pin and sew between the legs, from one **point 2** to the other. Lastly, finish up the other side by repeating parts B & C in the other direction. Sew from **point 2 to 1**, then up the side, ending at the **neck seam**. This should take you all the way around the body.

21. SEW THE BODY FRONT TO THE BACK



22. CLIP THE BODY

a. Finish by clipping the seam allowances at the corners of the body, particularly at the **neck seam** and **points 1 and 2**.

Turn the body right side out through the opening in the back of the head.

sew desu ne?

| WWW.CHOLYKNIGHT.COM |



23. STUFF THE BODY

- Begin by stuffing the body with stuffing about halfway. Then start filling up the legs firmly. Having stuffing already in the body will help keep the leg stuffing in place.
- Fill up the rest of the body, and sneak extra bits of stuffing into the legs if necessary. Keep filling the body until it's firm before moving onto the head.
- Start stuffing the head. Begin by filling up the sides of the head halfway (just like with the body in part A).

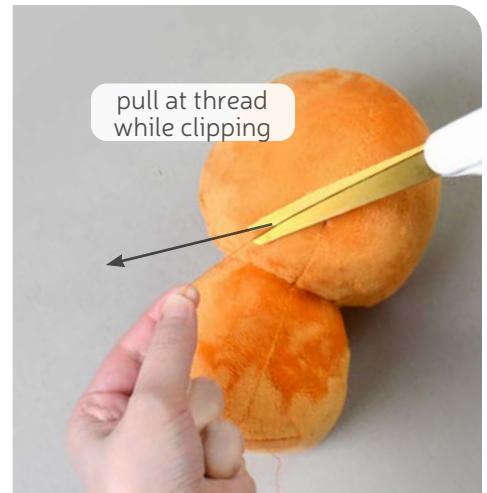
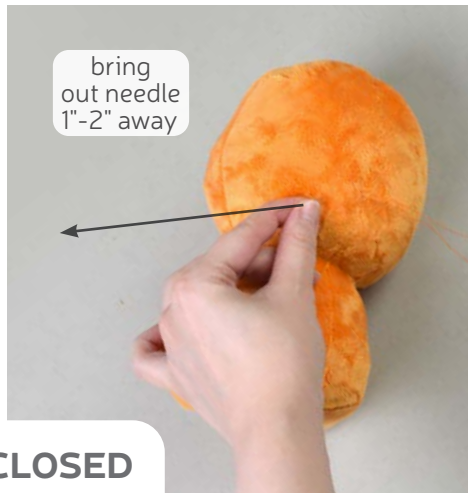


24. STUFF THE HEAD

- Next, fill up the nose. If there's already some stuffing in the head, this will help keep it in place. Stuff it enough so there are no wrinkles in the fabric.
- Fill up the rest of the head until it's completely firm.
- Once the plush is stuffed, make sure the seam allowances in the opening are tucked inside and prepare to ladder stitch it closed. Thread a hand-sewing needle and knot it at the end. Insert the needle from the inside of the opening and out of the plush near one edge of the opening. This will leave the knot inside the plush.

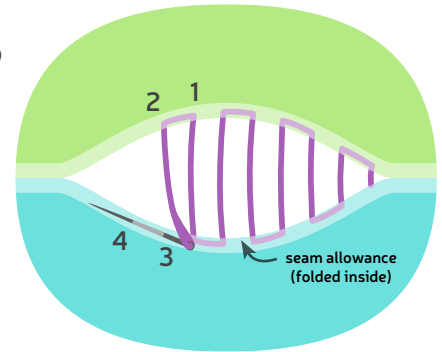
sew desu ne?

| WWW.CHOLYKNIGHT.COM |



25. SEW THE OPENING CLOSED

- Continue from here doing a ladder stitch. Take a $\frac{1}{8}$ " stitch into the fold of one side of the opening, then go across and take another. Keep going down the opening until you reach the end.
- When you're finished, stitch a knot into the end of the seam. Then insert the needle near the finished knot and out of the plush about 1-2" away.
- Pull the thread through and hold it taut while snipping the thread. The excess thread should sink back inside the plush -- all hidden!

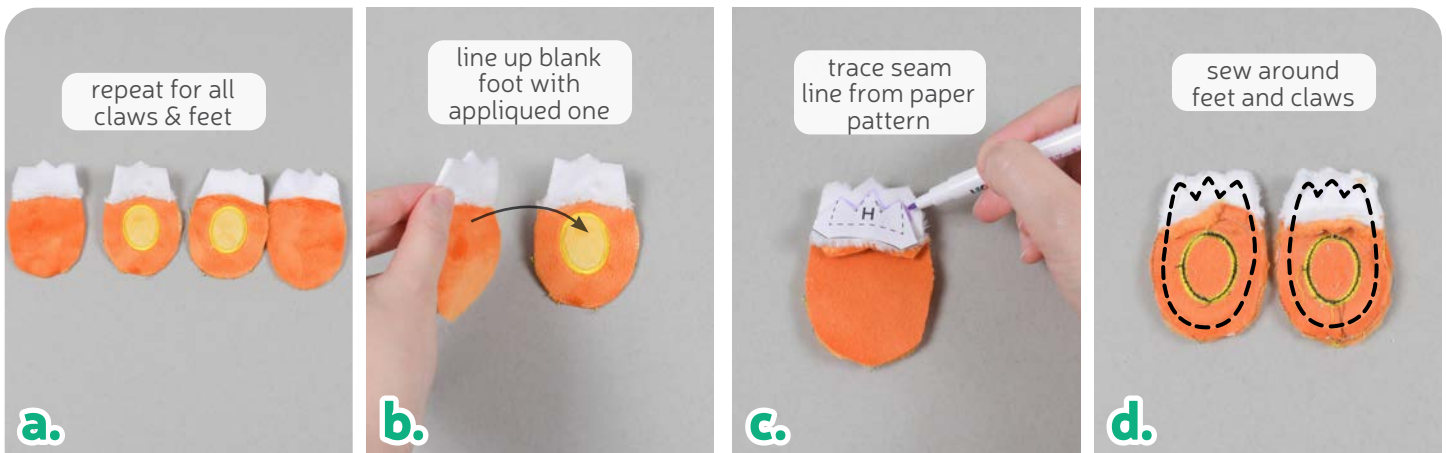


26. SEW THE CLAWS

- Grab your **FOOT** and **CLAW** pieces (G & H). We're going to be joining the slight inner curve of the claw to the top edge of the foot.
- Grab one of each piece and line up the inner curve of the claw with the top edge of the foot so right sides are facing and the raw edges match up.
- Sew the claw to the foot along the top edge.

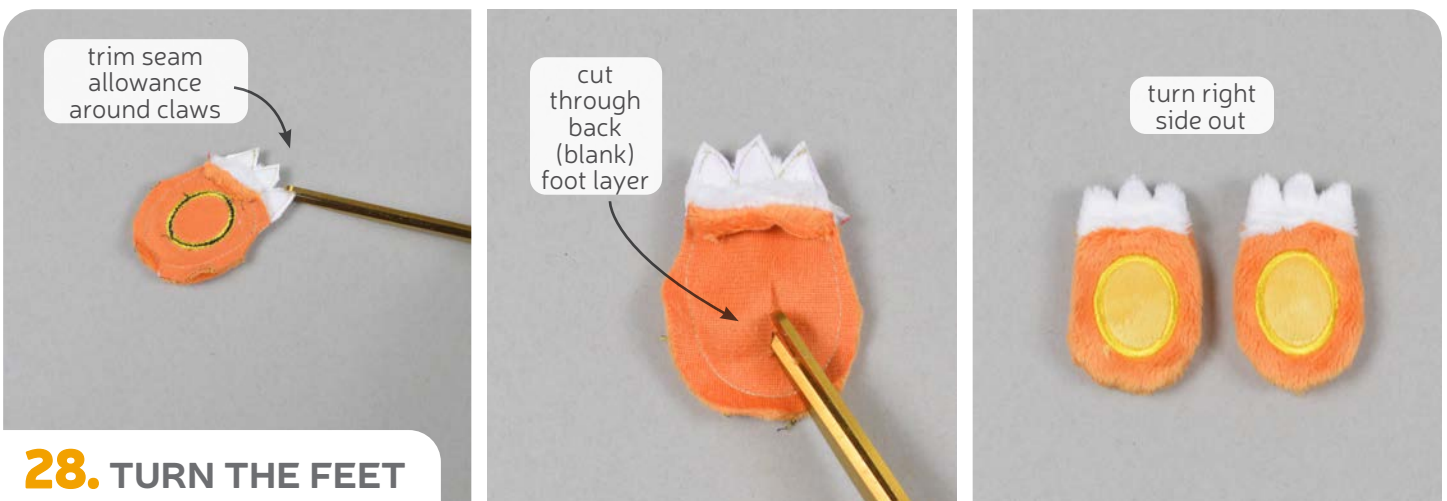
sew desu ne?

| WWW.CHOLYKNIGHT.COM |



27. SEW THE FEET

- Repeat step 26 three more times so each of your **FOOT** pieces (G) has a **CLAW** (H) attached to the top.
- Take two of your foot pieces, one with the applied foot pad and one blank one. Align them with right sides facing and raw edges matching up.
- The claw points are a little detailed, so if you need help sewing them accurately, it helps to transfer the stitching line from the paper template. Trim away the seam allowance from the template along the claw side. Then use it as a tracing template on the wrong side of the fabric.
- Sew around the feet, going over the traced lines, all the way around for two feet total.



28. TURN THE FEET

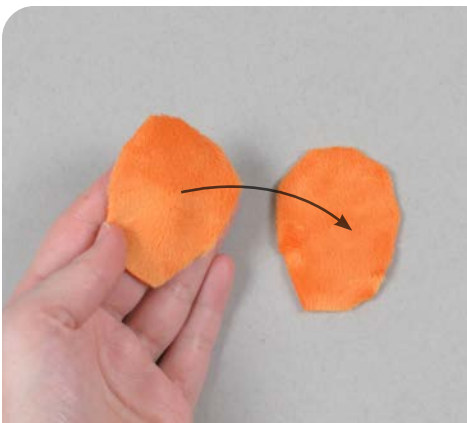
- Trim the excess seam allowance around the tips of the claws to reduce bulk and increase flexibility when the feet are turned next.
- To turn the pieces, cut a 1" slit through the blank layer of fabric only, near the base. There's also a **cutting guide** on the paper pattern for extra help.
- Turn the feet right side out through the opening you've cut. Define the claws with a chopstick or similar turning tool.

sew desu ne?

| WWW.CHOLYKNIGHT.COM |

- a. Stuff the feet lightly with stuffing. The claws don't need much stuffing. You'll want more in the base so it looks full and puffy.
- b. If desired, whip stitch the opening closed to help keep any stuffing from falling out during future steps.
- c. Take one of your **FEET** and align it over the **leg seam** (from step 21). The cut side should be facing down.
- d. Sew the foot to the leg using a ladder stitch. Go around the cut you made in step 28. Go around with long stitches for the first pass. Check that you like the placement, then go around again with tinier, neater stitches for the second pass. Repeat for both feet.

29. ATTACH THE FEET



30. SEW THE ARMS

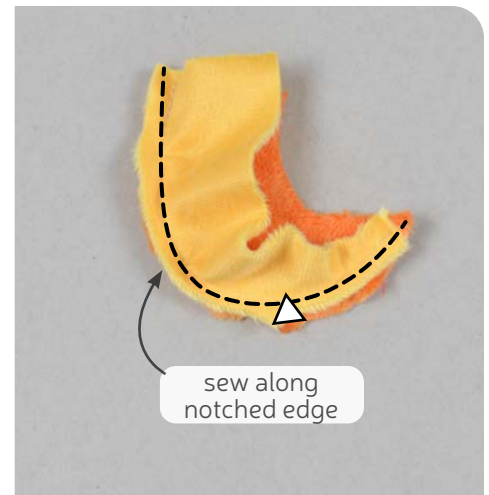
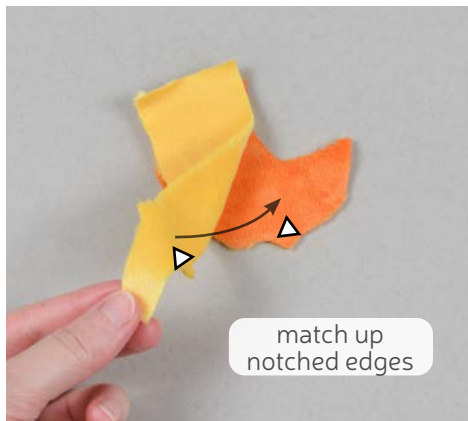
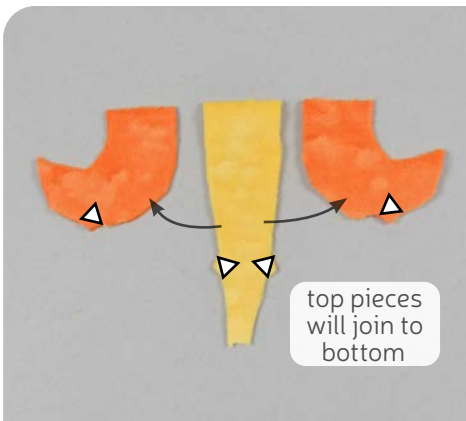
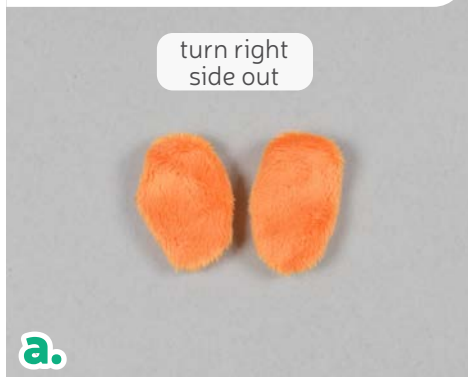
- a. We're going to repeat the same process for the feet as for the **ARMS**. Start by grabbing your arm pieces (I). Take two of them and align them with right sides facing and raw edges matching up.
- b. Sew them together all the way around the shape.
- c. To turn the pieces, cut a 1" slit through one layer of the fabric only, near the base. There's also a **cutting guide** on the paper pattern for extra help.

sew desu ne?

| WWW.CHOLYKNIGHT.COM |

- a. Repeat step 30 once more so you have two **ARMS** total, then turn them right side out.
- b. Stuff them lightly like for the feet. Take one and align it over the body. Place the cut side of the arm down onto the **CHEST** (C) right between the **INNER LEG** (D) and the **neck seam**.
- c. Ladder stitch the arms to the body, going around the cut from step 30. Sew near the arm seam when attaching the shoulder.
- d. For the underside of the arm, you'll have to flip it up and sew beneath the arm. Repeat for both arms.

31. ATTACH THE ARMS



32. SEW THE TAIL BOTTOM TO THE TOP PIECES

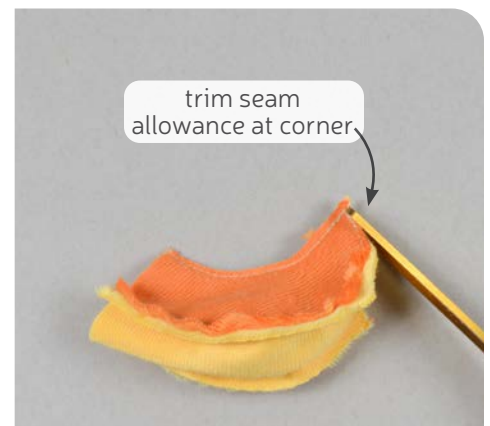
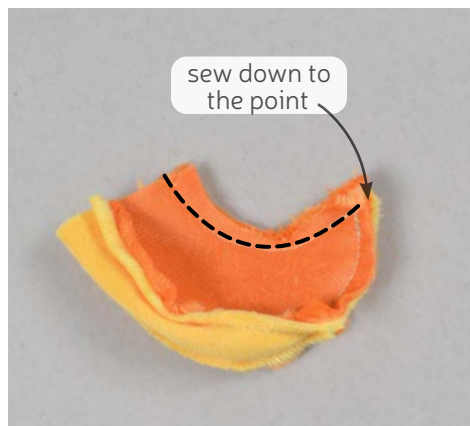
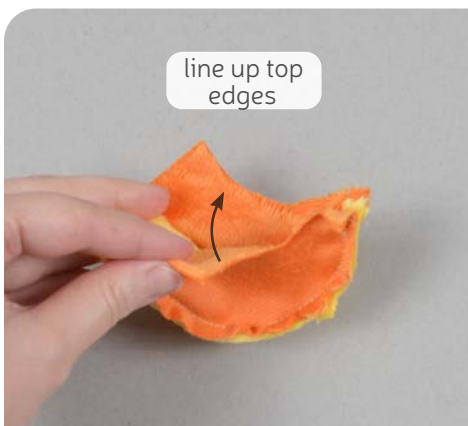
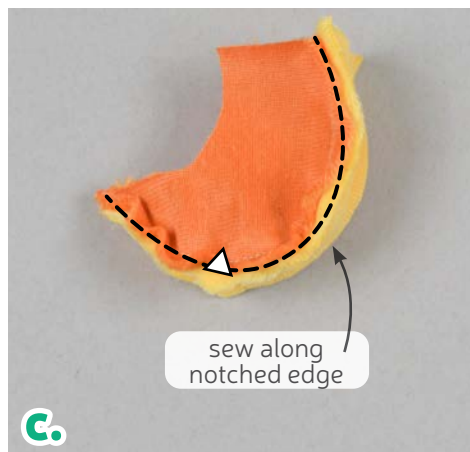
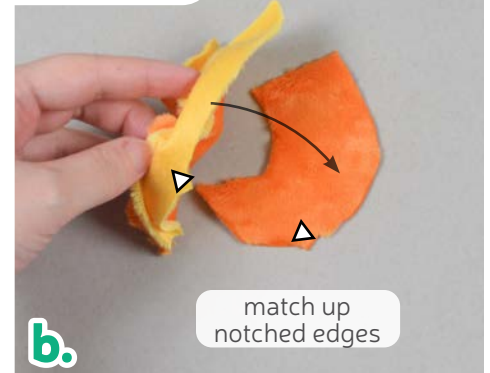
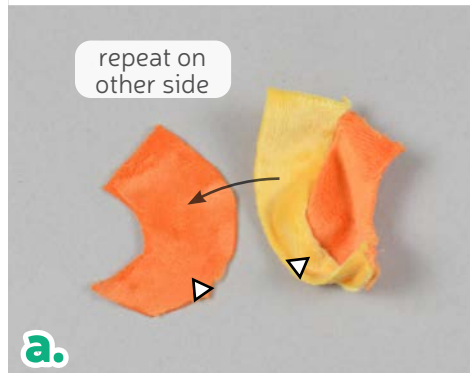
- a. Grab your **TAIL** pieces (J & K). We're going to sew the long **BOTTOM** piece around the curves of the **TAIL TOP**. The edges that come together next are marked with **notches** for easy identification and to help ensure the pieces don't get flipped.
- b. Line up one of the **notched sides** of the bottom with the tail top so the **notches** match up and the right sides are facing.
- c. Sew the tail bottom to the top along the **notched edge**.

sew desu ne?

| WWW.CHOLYKNIGHT.COM |

- a. Grab your other **TOP** piece (J). We're going to join it to the other side of the **BOTTOM** piece (K).
- b. Line up the **notched edges** as before. The three pieces will come together at the point of the tail.
- c. Sew the top to the bottom along the other **notched edge**.
- d. When complete, both **notched edges** on the bottom piece should be sewn.

33. SEW THE REMAINING TAIL TOP

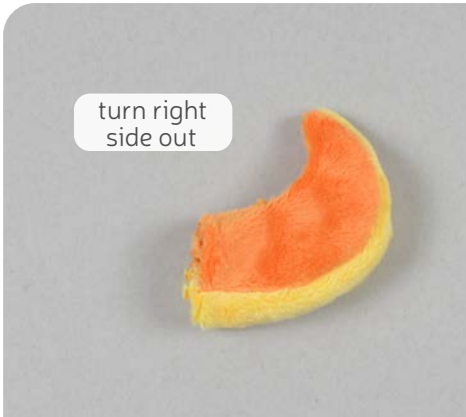


34. SEW THE TOP OF THE TAIL

- a. Lastly, line up the two **TAIL TOP** pieces (J). Pin the fabrics together.
- b. Sew from the base of the tail down to the point. All of your seams from before will converge at the tip here.
- c. Trim the excess seam allowance at the tip of the tail to reduce bulk.

sew desu ne?

| WWW.CHOLYKNIGHT.COM |



35. FLIP & STUFF THE TAIL

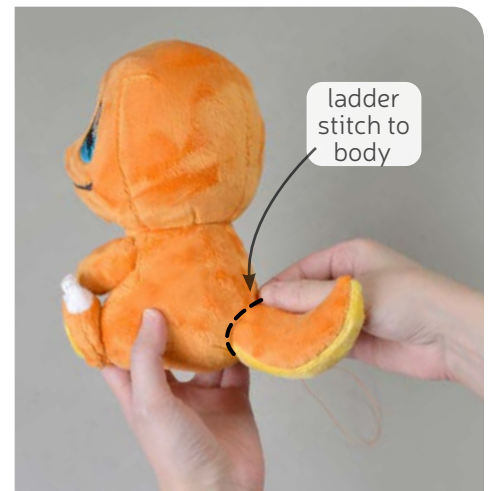
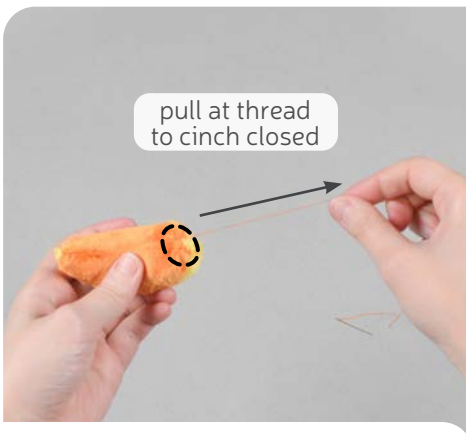
- Turn the tail right side out through the opening in the base.
- Stuff the tail semi-firmly with stuffing so it takes shape. Be sure to get small bits in the tip of the tail so it doesn't look empty.
- Grab a hand sewing needle and thread it. Sew a gathering stitch around the edge of the tail, about $\frac{1}{4}$ " away from the edge.

GATHERING:

The process of shortening the length of a piece of fabric by sewing long stitches through it. When the thread is pulled, it forms small folds that ruffle the fabric.

GATHERING STITCH:

A long version of the running stitch, which is a stitch done by weaving the needle in and out of a length of fabric going along a line. The long stitches (about $\frac{1}{4}$ " - $\frac{1}{2}$ " long) gather the fabric when pulled later.

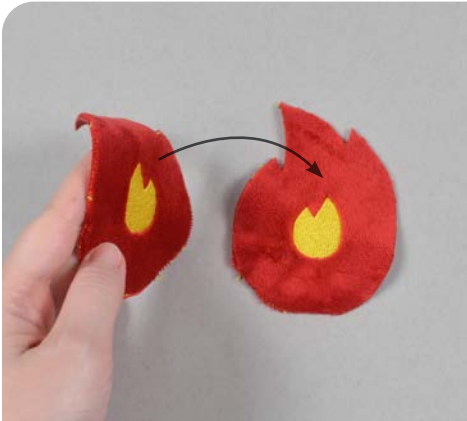


36. ATTACH THE TAIL

- Pull at the thread to cinch the **TAIL** closed. Sew a few knots into the center of the tail to hold it closed.
- Take your tail and align it onto the back of your plush so the cinched end is above the back **darts**. Make sure the tip of the tail is pointing up.
- Ladder stitch the tail to the plush around the base.

sew desu ne?

| WWW.CHOLYKNIGHT.COM |



37. SEW THE FLAME



- Grab your **FLAME** pieces (L). Align them with right sides facing and the raw edges matching up.
- If you haven't already, note the **opening for turning marking** on the paper pattern for the flame. Sew around the entire flame piece, but leave an opening in the bottom as indicated.
- Trim the excess seam allowance around the tips of the flame piece to reduce bulk and increase flexibility when the piece is turned next.

- Turn the **FLAME** right side out through the opening and define the points with a chopstick or similar turning tool.
- Stuff the flame lightly, just enough so it puffs up and takes shape.



38. TURN & STUFF THE FLAME

sew desu ne?

| WWW.CHOLYKNIGHT.COM |



39. ATTACH THE FLAME



- a. Align the opening of the **FLAME** onto the tip of the **TAIL**.
- b. Using a hand sewing needle, sew around the flame opening to attach it to the tail. Sew all the way around to secure it in place.



CONGRATS!
This completes your plush! Now give it a big hug!

sew desu ne?

| WWW.CHOLYKNIGHT.COM |

TAIL BOTTOM (K)

Cut 1 from yellow fabric
1/4" seam allowance

NAP

**TEST SQUARE
2"**

measure this square to
be sure you've printed
at the proper
proportions

**HEAD
FRONT
(A)**

Cut 1 from
orange fabric
1/4" seam
allowance

CLAW (H)

Cut 4 from white fabric
1/4" seam allowance

H

NAP

STRETCH

appliance
placement

dart

dart

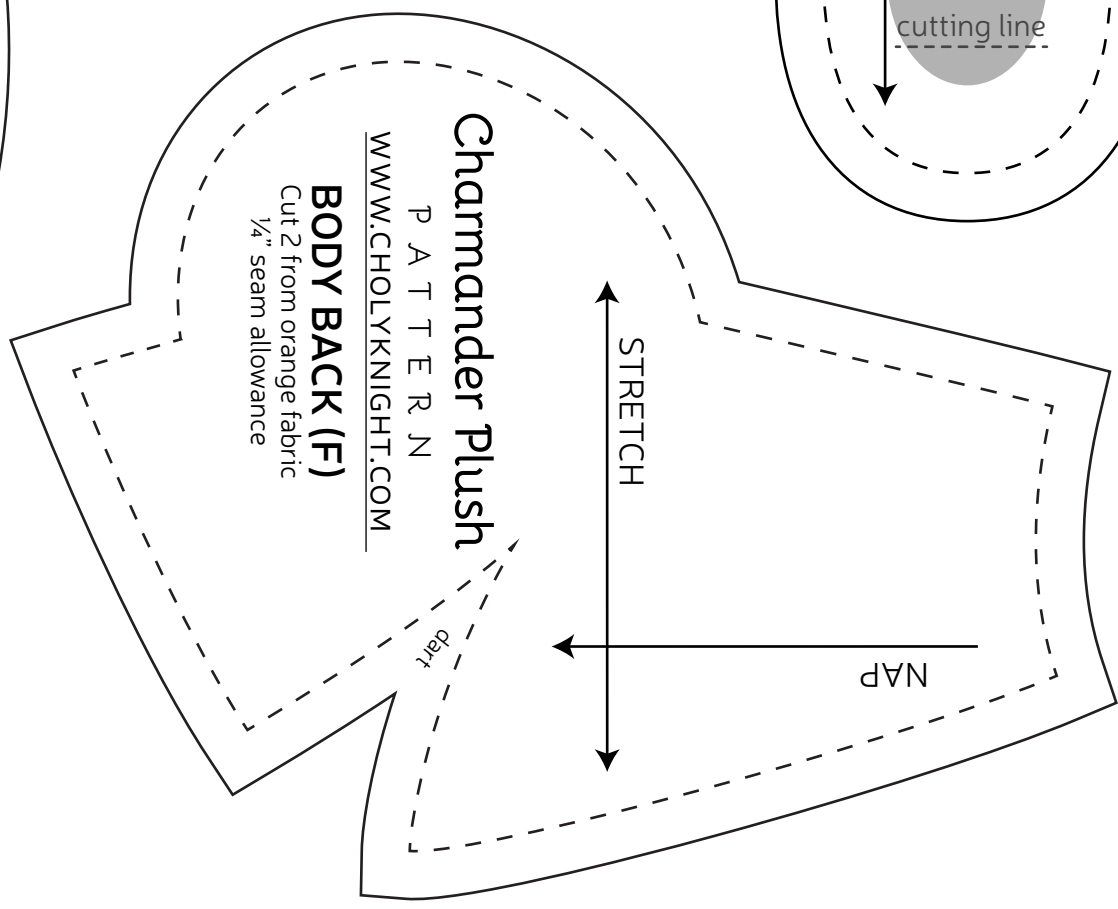
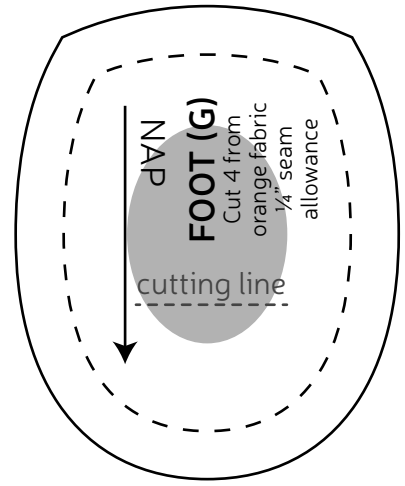
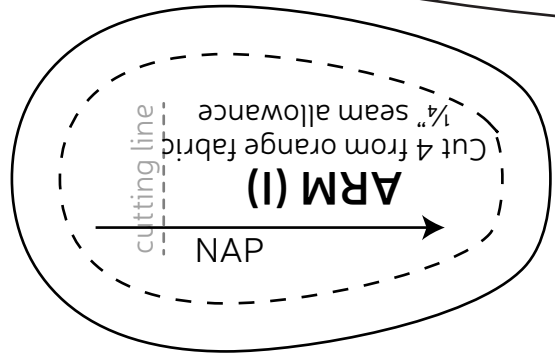
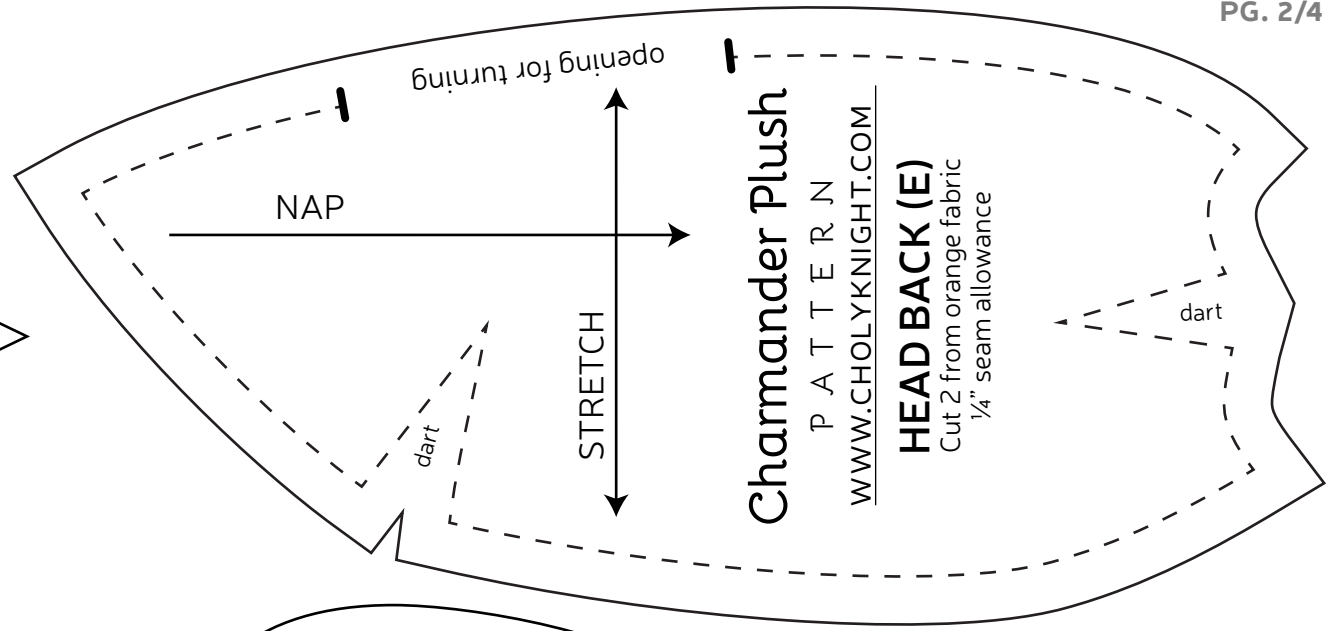
center
front

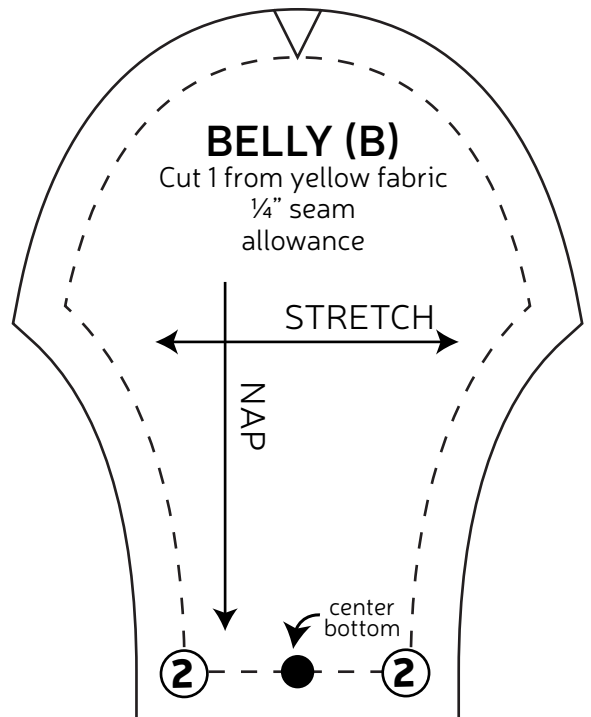
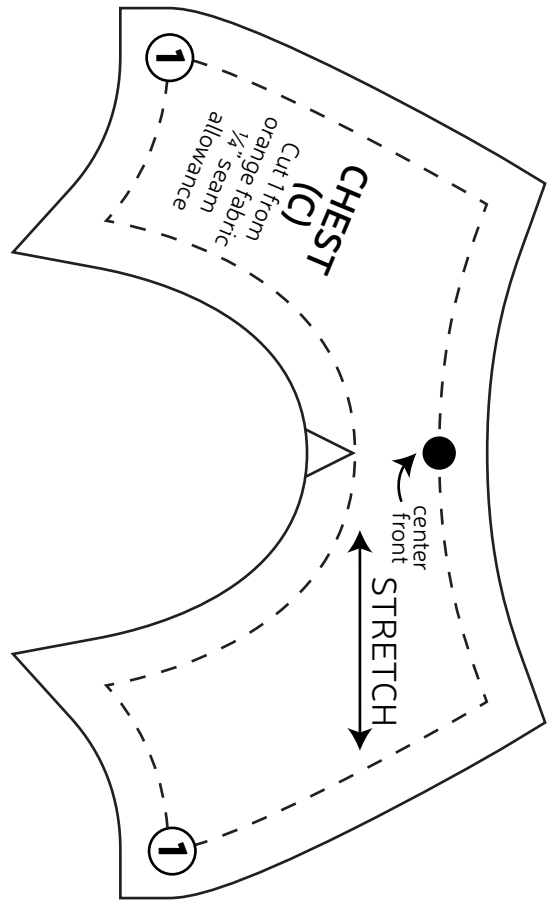
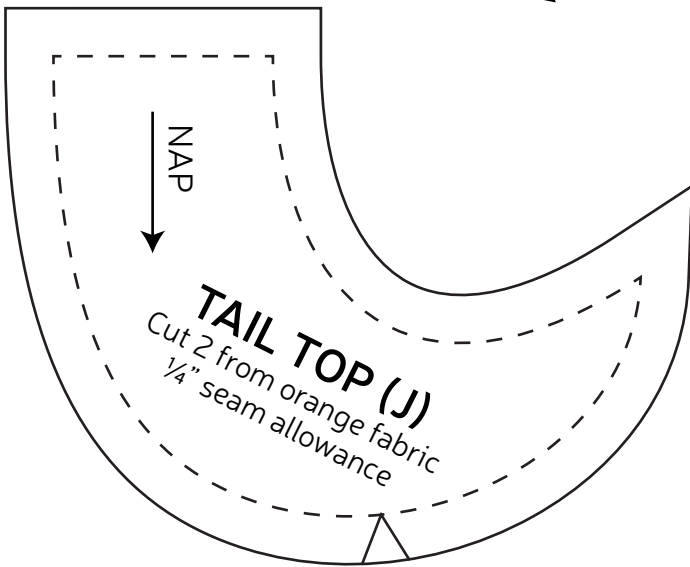
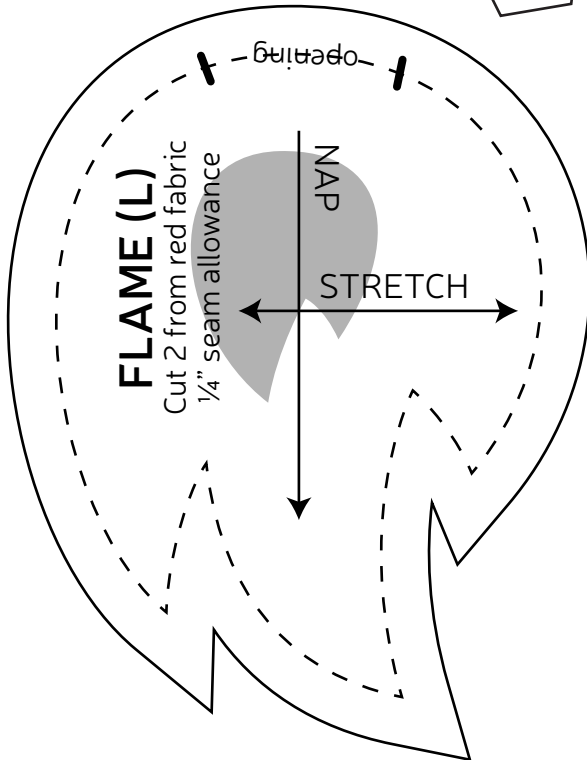
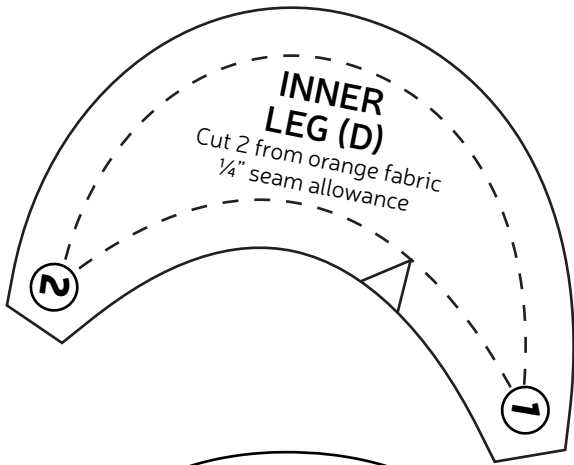
dart

A1 A2

A1 A2

oric
e





HEAD CENTER (A2)

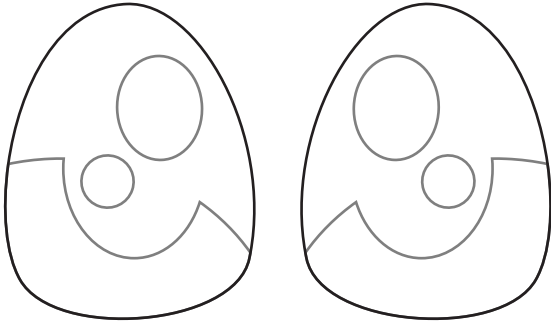
Cut 1 from orange fabric
1/4" seam allowance

STRETCH

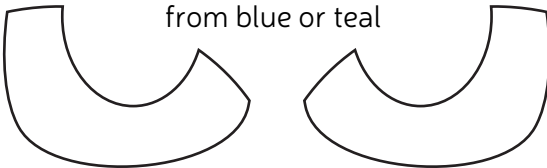
applique placement

NAP

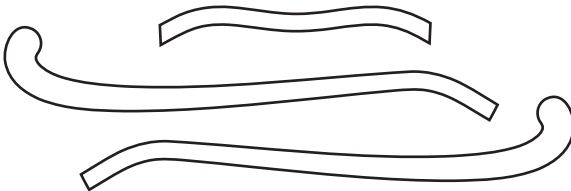
EYE
applique
trace & cut 1 each from black



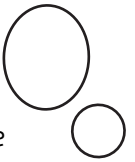
EYE HIGHLIGHT
applique
trace & cut 1 each from blue or teal



SEPARATE MOUTH PIECES
applique
trace & cut 1 each from black



EYE SHINES
applique
trace & cut 2 each from white



MOUTH & NOSTRILS
applique
trace & cut 1 each from black



FOOT PADS
applique
trace & cut 2 from yellow



INNER FLAME
applique
trace & cut 2 from yellow



HEAD FRONT (A1)

Cut 2 from orange fabric
1/4" seam allowance

STRETCH

applique placement

NAP

dart

