

LAPRAS PLUSH



a free sewing pattern by



LAPRAS PLUSH

Lapras is a peaceful water Pokemon that resembles a plesiosaur. In this plush tutorial, you'll learn how to make a smaller cuddlier version! It features a chubby body with four plump flippers and a tiny tail. On its back is a huge shell with blunt spikes. Meanwhile the head has spiral ears and a tiny horn. When you finish you'll feel ready to go on a Pokemon adventure, having befriended such a gentle giant!

DIFFICULTY:



The most difficult part of this plush is definitely all the hand sewing. So give yourself a lot of time for that. Most of the body pieces are attached by hand, and Lapras has a lot of little spikes. The shell in particular is such a big piece so it's easy for it to become lopsided. Be sure to mark the placement carefully and baste it in place first before going in with your permanent stitching.

SKILLS USED:

- Fusible web applique
- Curved sewing
- Basting
- Darts
- Ladder stitch
- Sewing small pieces
- Matching notches and points
- Gathering; gathering stitch
- Top stitching

MAKES:

ONE PLUSH: about 8½" tall from bottom of belly to top of head, 4" wide from each side of head, and 8" long from tip of nose to tip of tail.

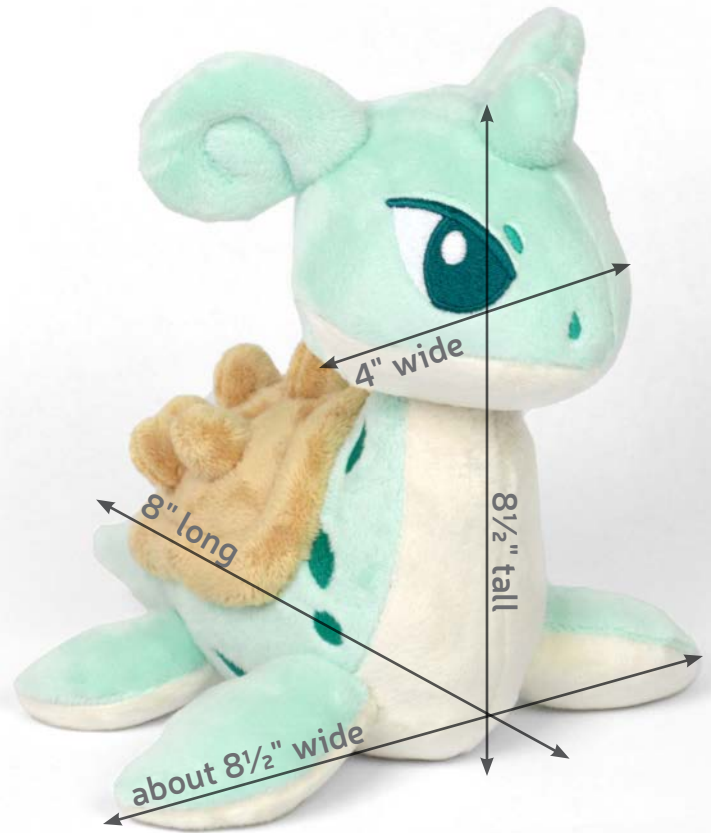


sew desu ne?

| WWW.CHOLYKNIGHT.COM |

MATERIALS & TOOLS:

- ¼ yd. of turquoise fabric for main body
- 1/3 yd. or 16" x 12" of light yellow fabric for belly
- ¼ yd. of light gray fabric for shell
- 5" x 7" of scrap fabric for poly pellet pouch
- 3" x 3" of white applique fabric (such as felt, flannel, cotton, or fleece) for eye whites and eye shines
- 3" x 3" of black applique fabric for pupils, nostrils, and eyebrows
- 3" x 3" of dark turquoise applique fabric for body spots
- 6" x 6" piece of light or heavy duty fusible web
- sewing thread to match main fabric and applique fabrics
- poly-fil stuffing
- poly pellets
- spoon or funnel for filling poly pellets
- basic sewing tools (sewing machine, scissors, iron, needles, pins, fabric marker, seam ripper)



FUSIBLE WEB:

- Fusible web adhesive is a sheet of adhesive with a paper backing. **Not to be confused with fusible interfacing**, which is adhesive attached to a fabric/fiber backing.
- Some common brands are **Pellon** & **HeatnBond**
- In countries outside the US, it may also be known as **bondaweb**
- It comes in **light** and **heavy duty** varieties. Lightweight strength is meant for applique you intend to sew later. Heavy duty versions are for a no-sew bond. If you try to sew them later your machine might have trouble penetrating the glue.



sew desu ne?

| WWW.CHOLYKNIGHT.COM |

fabric comparison:



MINKY VS. FELT



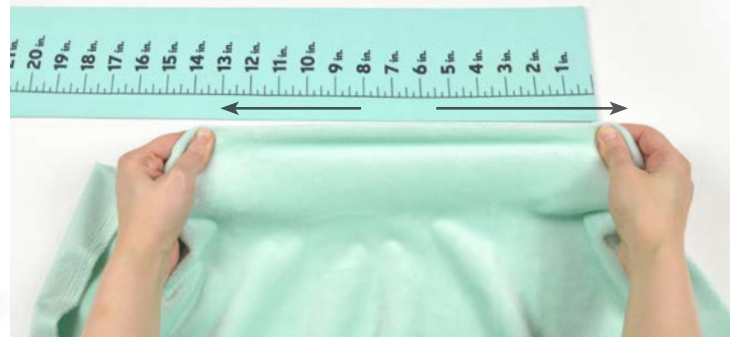
SUGGESTED FABRICS:

MINKY OR FLEECE

Medium weight, plush fabrics with about 20%-30% stretch along the crosswise grain work best for this project. The varieties shown to the left are some good options and names to look for. Try to avoid heavyweight versions of fleece that are intended for outdoor apparel or they may cause trouble for the detailed areas.

You can also use non-stretch fabrics (such as felt), but be aware that the curves will be more difficult to sew and the result will look different. The plush will become more elongated and the edges will look pointier.

10" of minky
stretches to 13"
= 30% stretch



sew desu ne?

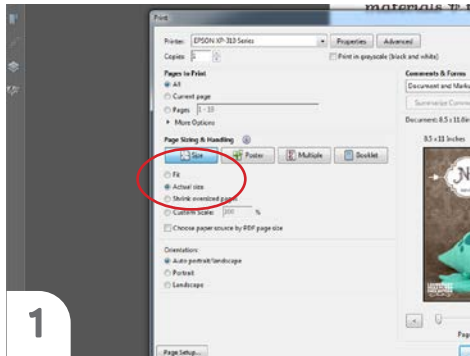
| WWW.CHOLYKNIGHT.COM |

PRINTING THE PATTERN:

Set your computer to print **PAGES 26-28.**

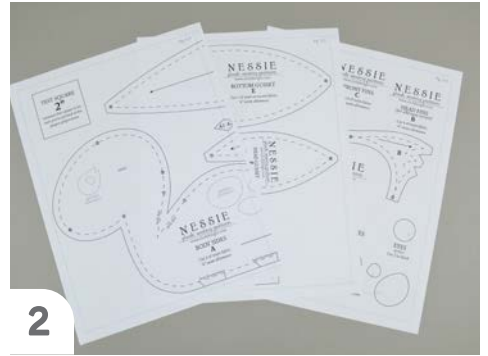
If you're unfamiliar with printing and assembling a .pdf pattern, read the steps to follow.

For the best results, use a .pdf reader like **ADOBE READER**. That's what is shown here and will give you the most control over the settings.



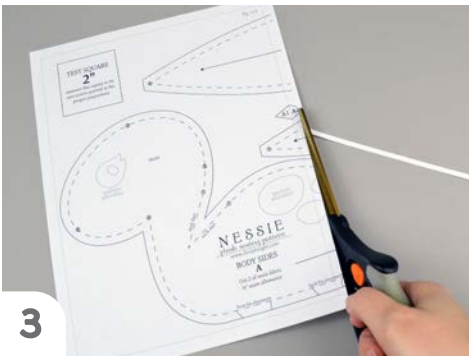
1

At the print dialog box, check the box that says print at "Actual Size" or 100%. Any other selection (such as "Fit to page") will distort the pattern so it's slightly larger or smaller and we don't want that.



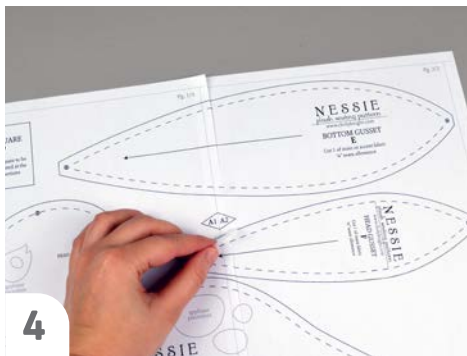
2

Print the pages needed for the file. You might have one or more. Either way, be sure you have the full collection by noting the page numbers in the corner.



3

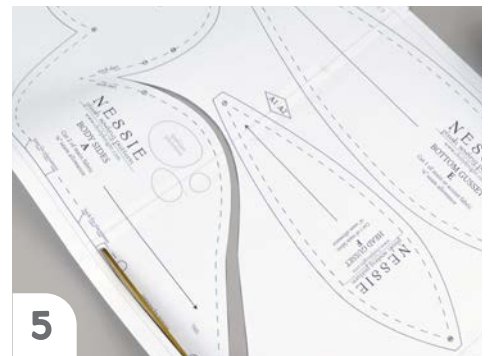
It's likely your printer will have a margin that ensures your image doesn't print to the very edge. Assembly will be easier if you trim off this blank margin edge. This will give you pages that overlap slightly during assembly. If you trim across the gray outline boxes, this will give you pages that don't overlap but rather butt against each other.



4

To line up the pattern pages, match up the corresponding diamond shapes. Each diamond will have a letter, so it's simply a matter of matching A1 to A2, B3 to B4 and so on. The faint gray lines indicate the border of every page, you should be able to line those up as well. When the diamond goes together, tape it in place.

If you have many pages, it's easier to tape up the pages into rows first. Then tape the rows together into a full block.



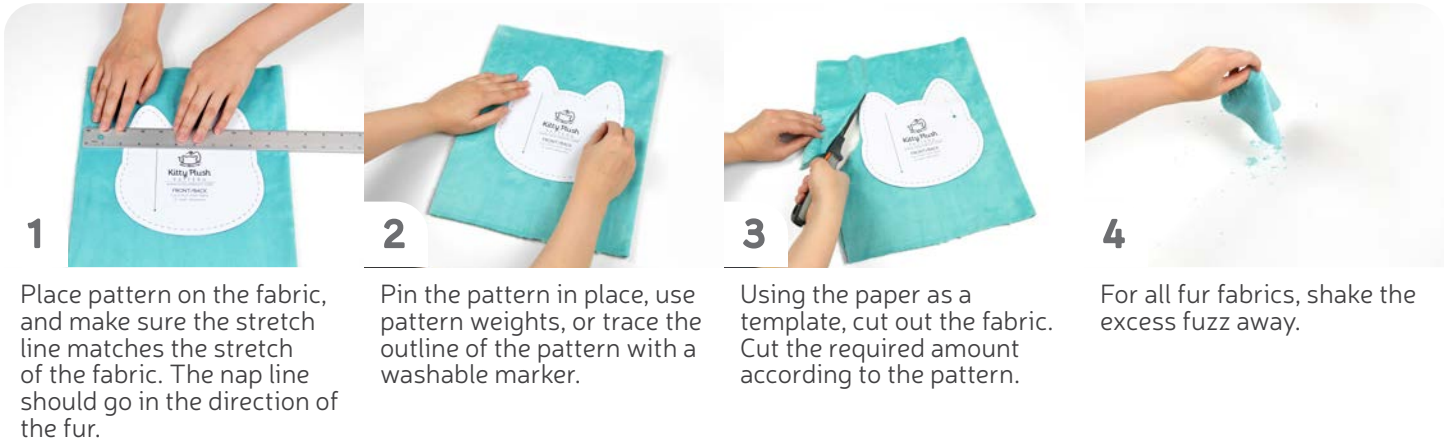
5

You can trace the patterns onto a different paper, or you can also just cut them straight from the printer paper -- be sure that each piece is fully taped together along the joins so they don't fall apart when you cut them.

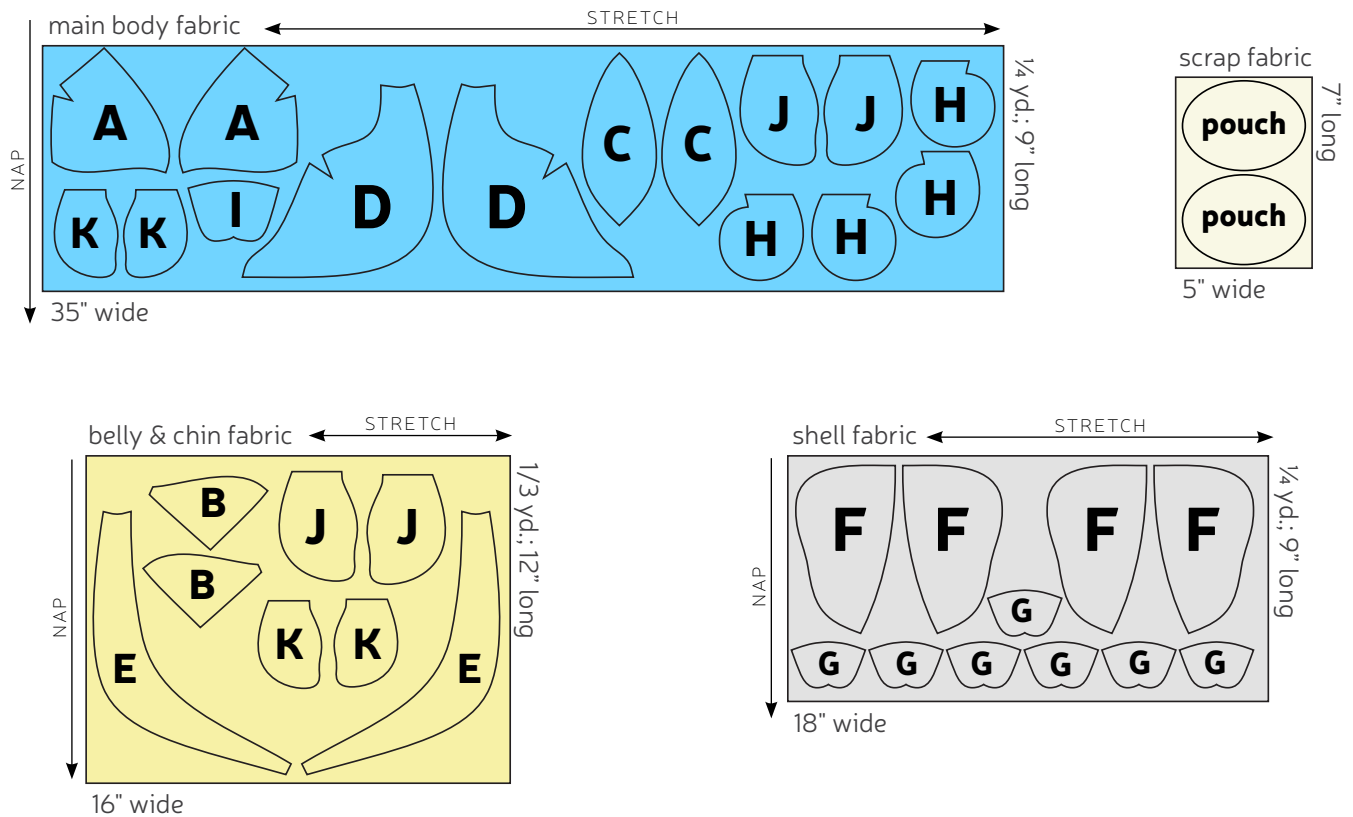
sew desu ne?

| WWW.CHOLYKNIGHT.COM |

CUTTING THE FABRIC:



CUTTING LAYOUT:



sew desu ne?

| WWW.CHOLYKNIGHT.COM |

BEFORE YOU BEGIN:

- Briefly read the project instructions so you know what to expect.
- If desired, mark the cut fabric pieces with the markings and symbols from the pattern. Or wait until the applicable step before transferring.
- Note that a ¼" seam allowance is used throughout the project, which is included in the pattern templates.



1. PREPARE THE FACE APPLIQUE

- Grab your fusible web and applique templates. Trace the face and body spot templates. You'll need:
 - **eye white** (2)
 - **eyebrows** (2)
 - **eye shines** (2)
 - **pupils** (2)
 - **nostrils** (2)
 - **body spots** (12)
- Fuse the bumpy (adhesive) side of the fusible web onto the applique fabrics, following the color guides on the paper templates:
 - **eye whites & eye shines** on white
 - **pupils, nostrils, & eyebrows** on black
 - **body spots** on dark turquoise
- Cut out your applique pieces and grab your two **HEAD FRONT** pieces (A). Grab your first applique layer, the **eye whites**. Set your paper pattern on top of the head front piece. Align the applique piece on top where the placement markings are. Next, carefully pull the paper pattern away while holding the applique piece in place.



sew desu ne?

| WWW.CHOLYKNIGHT.COM |



2. PREPARE THE FACE APPLIQUE

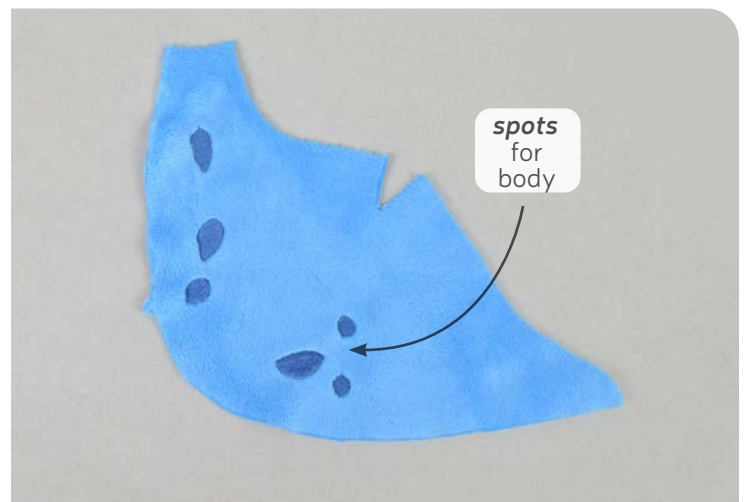
- Fuse the first applique layer (the **eye whites**) with your iron. Use a press cloth, such as a scrap piece of cotton. This will help protect any polyester or fuzzy fabrics from melting or scorching.
- Add the next layer, the **pupils**.
- Continue building up the eye with the next piece, the **eye shines**. Arrange and fuse it the same as the other pieces using the paper pattern (and the photo) as a guide. Lastly, add the smallest pieces like the **eyebrows** and **nostrils**. Make sure you have both sides of the head when complete.

3. APPLIQUE THE BODY

- Take this time to also applique your other body pieces using the same method. The two **BODY** pieces (D) need **spots**. The placement guides on the paper pattern help so they don't get in the way of the shell and flippers.

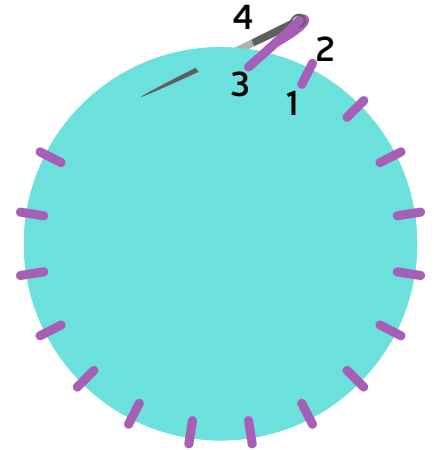
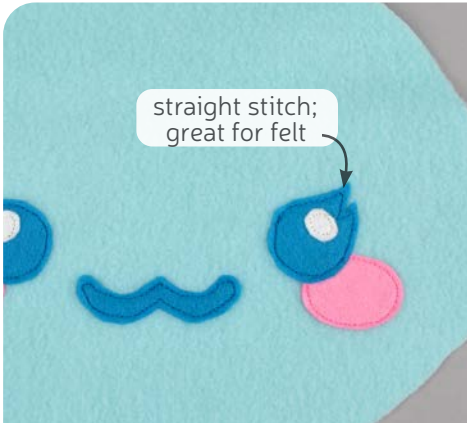
If you used heavy duty fusible web, you can keep the pieces fused without sewing, or you can sew them in place a number of ways. I've used a zigzag stitch here.

→ *Refer to the next step for some other applique options.*



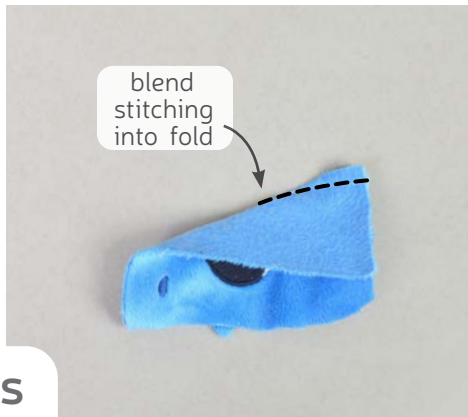
sew desu ne?

| WWW.CHOLYKNIGHT.COM |



3a. OTHER APPLIQUE OPTIONS

- Other good options for applique include a straight stitch, which involves sewing around the edge of the applique pieces with a straight stitch using matching thread -- about 1/8" in from the edge.
- You can also applique by hand; I prefer a whipstitch. Thread a hand-sewing needle with some matching thread and knot it. Bring the thread up from the back of the project; about 1/8" in from the edge of the applique shape. Bring it down perpendicular from the curve, just outside of the applique shape. This completes one stitch.
- For the next stitch, bring the needle back up about 1/8" away from the previous stitch and 1/8" in from the edge just as in the first stitch. Once again, bring it down just outside the applique shape. Continue this way until you've sewn around the shape.



4. SEW THE HEAD DARTS

- Grab your **HEAD FRONT** pieces (A). These pieces have small **darts** in the upper corner, you'll see they make a small V shape. To sew them, start by folding the head piece in half along the point of the **dart** with right sides together to align the sides of the V.
- Sew from the opening of the **dart** toward the point. Try to blend your stitching into the fold of the fabric for a rounder finish to your plush.
- Repeat with the **darts** on both sides of the head for two **darts** total.

DARTS:

Darts are a v-shaped wedge sewn into a pattern piece that create a 3D shape in the fabric.

The two lines of the darts are sometimes called the **LEGS**. These lead up to the **POINT**.

You can think of darts like a partial seam. One that only goes part-way through the fabric.

sew desu ne?

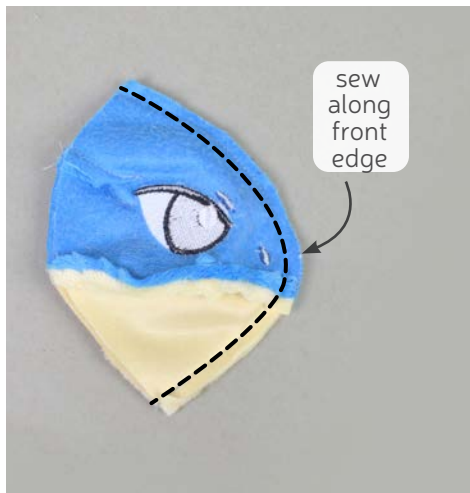
| WWW.CHOLYKNIGHT.COM |

- a. Grab your **HEAD FRONT** so far (A) as well as your **CHIN** piece (B). We're going to attach these pieces next. They have **notch markings** for help with alignment so the pieces don't get flipped.
- b. Align the head front with the chin so the right sides are facing and the **notches** match up.
- c. Sew the head to the chin along the **notched edge**.
- d. Repeat with your remaining pieces for two sides to your head front.

5. SEW THE CHIN



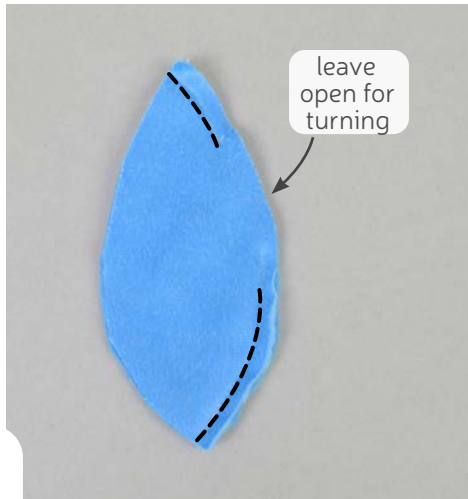
6. SEW THE FACE



- a. Take both of your head front pieces and align them with right sides facing and the raw edges matching up. Also try to align the **chin seam** from the previous step.
- b. Sew the front edge of these face pieces. It's along the side with the **nostrils**, not the side with the head darts.
- c. Open up your pieces when complete, and this is the finished face.

sew desu ne?

| WWW.CHOLYKNIGHT.COM |



7. SEW THE HEAD BACK

- Grab your **HEAD BACK** pieces (C). Align them with right sides facing and the raw edges matching up.
- If you haven't already, note the **opening for turning markings** found on the paper pattern for the head back. Mark these points onto the wrong side of your fabrics. Sew the head back pieces together along this edge, but leave the opening that you marked.
- Open up the pieces when complete.

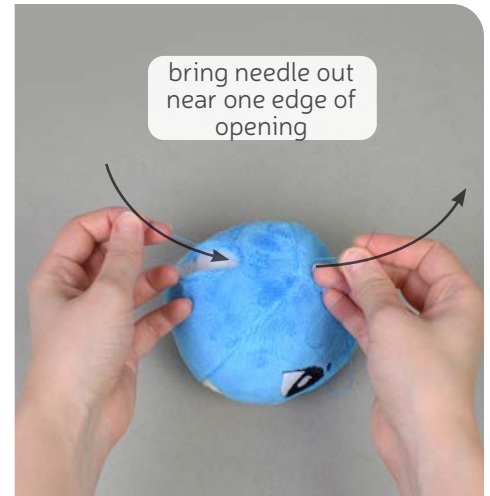


8. SEW THE HEAD

- Take your sewn **HEAD BACK** pieces (C) as well as your **HEAD FRONT** so far (A/B). Align them with right sides facing and the raw edges matching up. The seams at the top and bottom should also align. The head back piece also has a **circle marking** that indicates the top for extra help.
- Sew the head back to the head front all the way around the piece.
- Turn the head right side out.

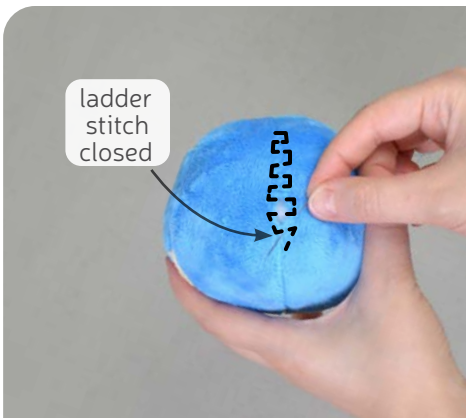
sew desu ne?

| WWW.CHOLYKNIGHT.COM |



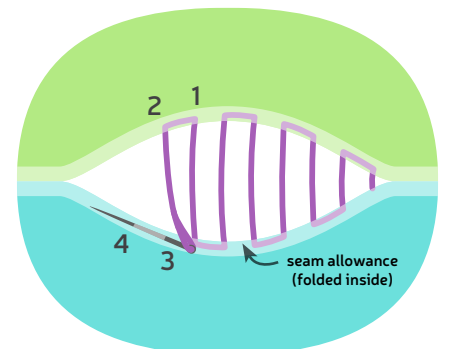
9. STUFF THE HEAD

- Begin stuffing the head. Be sure to get a good amount in the tip of the nose so it looks just a little pointed and doesn't deflate later.
- Then fill up the rest of the head with stuffing. Stuff it firmly enough so there are no wrinkles in the fabric, especially near the seams.
- Once the head is stuffed, make sure the seam allowances in the opening are tucked inside and prepare to ladder stitch it closed. Thread a hand-sewing needle and knot it at the end. Insert the needle from the inside of the opening and out of the plush near one edge of the opening. This will leave the knot inside the plush.



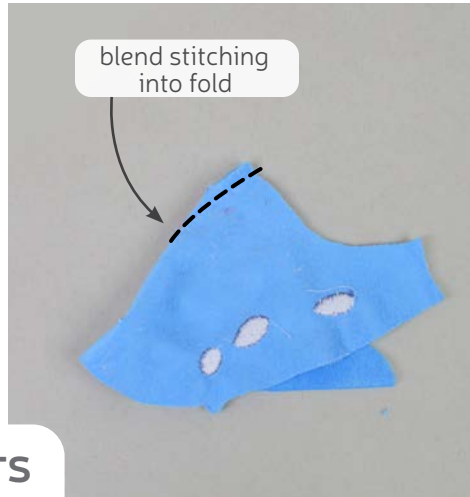
10. CLOSE UP THE HEAD

- Continue from here doing a ladder stitch. Take a 1/8" stitch into the fold of one side of the opening, then go across and take another. Keep going down the opening until you reach the end.
- When you're finished, stitch a knot into the end of the seam. Then insert the needle near the finished knot and out of the plush about 1-2" away.
- Pull the thread through and hold it taut while snipping the thread. The excess thread should sink back inside the plush -- all hidden!



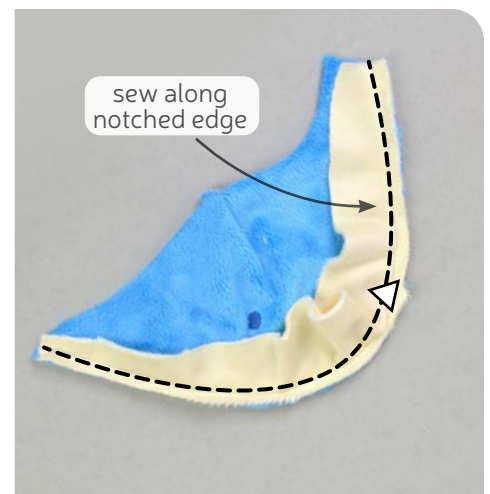
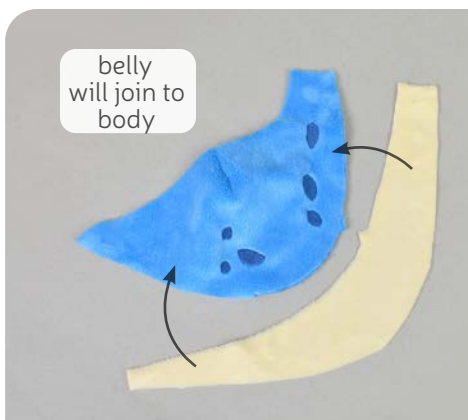
sew desu ne?

| WWW.CHOLYKNIGHT.COM |



11. SEW THE BODY DARTS

- Grab your **BODY** pieces (D). These pieces also have **darts** similar to the **HEAD FRONT** (A). Sew them the same way, starting by folding the fabric along the point of the **dart**. Match up the edges that make the little V shape.
- Sew from the opening of the **dart** into the fold of the fabric, and blend your stitching so it makes a rounder finish.
- Repeat with your other body piece for two **darts** total.

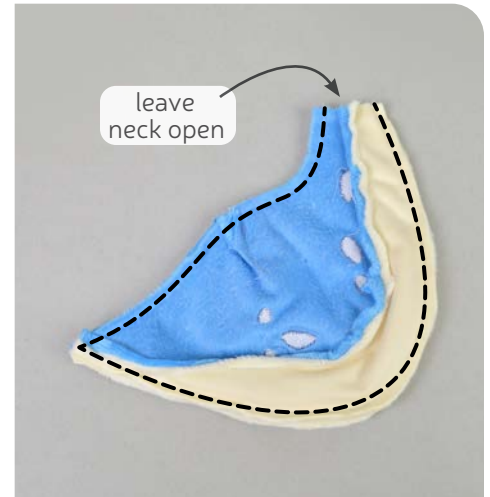
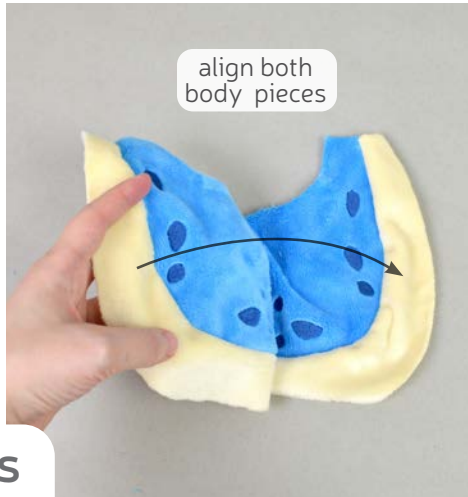


12. ATTACH THE BELLY

- Grab your sewn **BODY** pieces (D) as well as your **BELLY** pieces (E). The outer curve of the body will be joined to the inner curve of the belly. These edges have notches on them to help with alignment.
- Bend the belly piece to fit around the body piece. Make sure right sides are facing and the **notched edges** match up.
- Sew the belly to the body along the **notched edge**.

sew desu ne?

| WWW.CHOLYKNIGHT.COM |



13. SEW THE BODY SIDES

- Repeat step 12 with your remaining **BODY** and **BELLY** pieces (D & E) so you have two sides.
- Take your sewn body and belly pieces and align them with right sides facing and the raw edges matching up.
- Sew the pieces along the long curved edges. This starts with the edge along the belly leading to the point at the tail, then back up along the back. Leave the short straight edge free for the neck later.

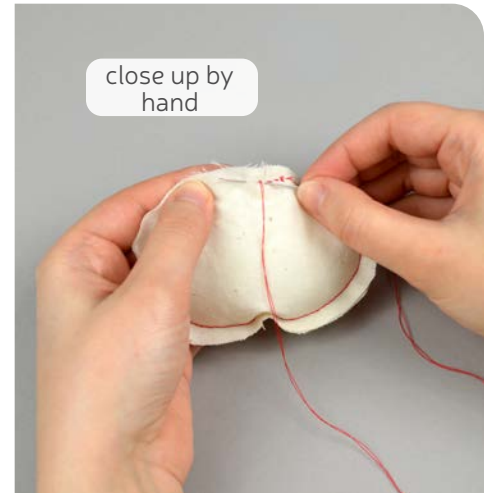
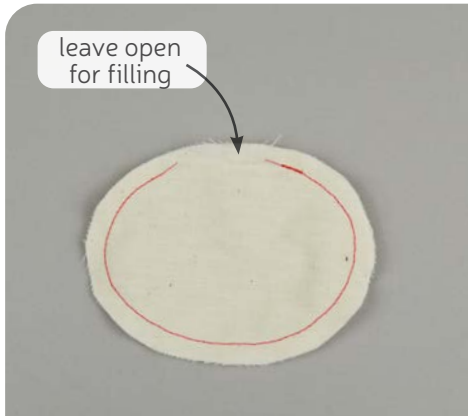


14. CLIP & TURN THE BODY

- Clip the excess seam allowance at the tip of the tail and the curves of the back to reduce bulk and increase flexibility when the piece is turned.
- Turn the body right side out through the opening in the neck.
- Before adding the **POLY PELLETT POUCH**, begin stuffing the body just a little bit in the tail tip.

sew desu ne?

| WWW.CHOLYKNIGHT.COM |



15. SEW THE POLY PELLETT POUCH

- Grab your **POLY PELLETT POUCH** pieces. If you haven't already, transfer the *opening for filling* markings found on the paper pattern for the pellet pouch. Take your two pellet pouch pieces and align them together (either way facing; doesn't matter). Sew around the perimeter of the oval, leaving an opening as indicated by the markings.
- Fill the pouch with poly pellets until it's almost full. I like to use a spoon for this, but some people prefer a funnel.
- Once you've finished, thread a hand sewing needle and stitch the opening closed with a whip stitch or back stitch. You can also sew it by machine, but go very slowly or just use the hand wheel. Sewing over a pellet will very likely break a needle.



16. STUFF THE BODY

- Insert the **POLY PELLETT POUCH** (L) into the neck of your body piece.
- Nestle the pouch into the tail tip of the body piece.
- Stuff the rest of the body with stuffing around the pouch in the back and around the sides. The body should look nice and round.

sew desu ne?

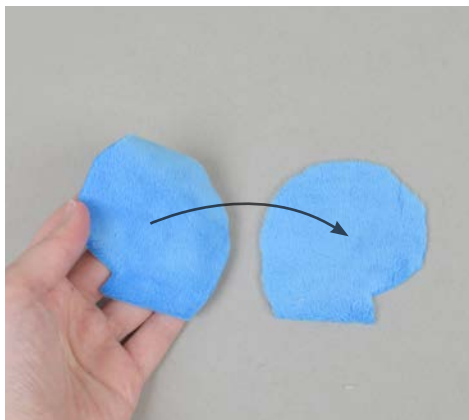
| WWW.CHOLYKNIGHT.COM |

- Grab your sewn head from before. Align it over the body of your plush so they're both facing forward. The **center seams** in the front and back should also match up.
- Ladder stitch the head to the body of the plush. Use a long basting stitch at first to hold the head in place.
- If your head wobbles, you can add some more stuffing into the neck to give it more support before you sew completely around the neck.
- Once you like the head placement from all angles, sew around it again with tinier, neater stitches to secure it permanently.

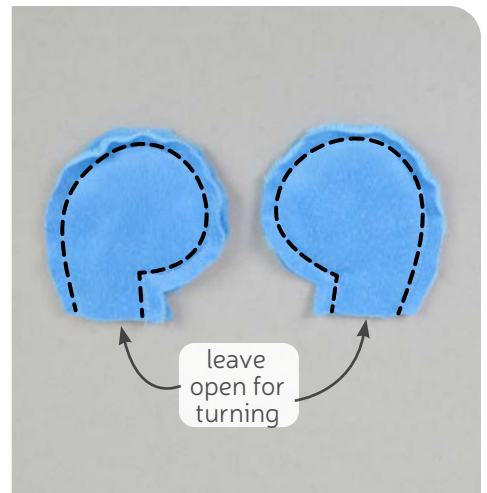
BASTING:

A form of temporary sewing meant to hold pieces in place. A long stitch length is often used for this reason. The finished result is not meant to be seen and sometimes is even removed later (depending on your project).

17. ATTACH THE HEAD



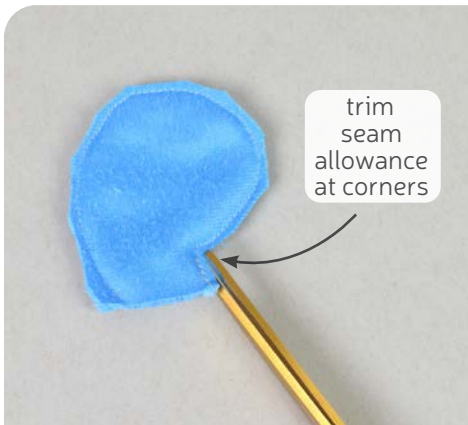
18. SEW THE EARS



- Grab your **EAR** pieces (H). Take two of them and align them with right sides facing and the raw edges matching up.
- Sew them together around the long curved edge. Leave the short straight edge open for turning the piece later.

sew desu ne?

| WWW.CHOLYKNIGHT.COM |



19. STUFF THE EARS

- Trim the excess seam allowance at any corners and curves on the **EAR (H)**. This will help them turn easier.
- Turn the ears right side out through the opening you left in the base.
- Stuff the ears lightly with stuffing. We're going to be sewing over the ears next, so don't fill them too full.



20. TOP STITCH THE EARS

- Next we're going to give the ears their distinctive curled shape by top stitching a line around the middle of the ear. Start by tracing the **top stitching line** from the **EAR (H)** paper template. You can cut along the top stitching line and trace around the cut.
- When fully traced, the line should make a short spiral in the middle of the ear, starting at the corner.
- Top stitch the ears along the traced line. If you're using a sewing machine, you'll want to sew slowly for this part. If you get skipped stitches, you may need to switch to a stretch needle. If you still have trouble, it can also easily be done by hand with a short running stitch or a back stitch.

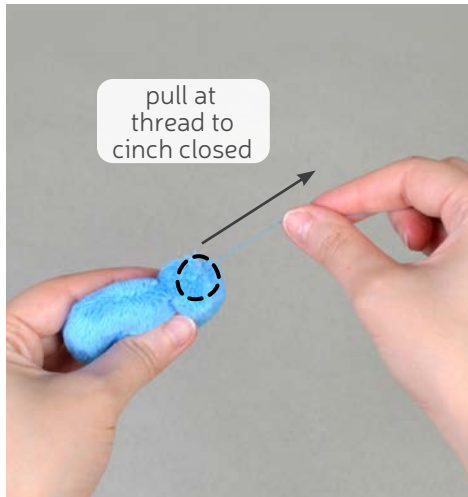
sew desu ne?

| WWW.CHOLYKNIGHT.COM |



21. CINCH THE EARS

- Thread a hand sewing needle and knot the end. Sew around the opening of the **EAR** (H) with a gathering stitch, about $\frac{1}{4}$ " away from the edge.
- Pull at the gathering thread to cinch the opening of the ear closed.



GATHERING:

The process of shortening the length of a piece of fabric by sewing long stitches through it. When the thread is pulled, it forms small folds that ruffle the fabric.

GATHERING STITCH:

A long version of the running stitch, which is a stitch done by weaving the needle in and out of a length of fabric going along a line. The long stitches (about $\frac{1}{4}$ "- $\frac{1}{2}$ " long) gather the fabric when pulled later.

- Take the cinched end of the **EAR** (H) and align it over the top of your Lapras' head. They're centered over the point where the **top head seam** meets with the **head dart**.
- The ear should be pointing toward the back of the head, at about a 45 degree angle. Ladder stitch the base of the ear to the head all the way around. Repeat with the second ear on the other side.

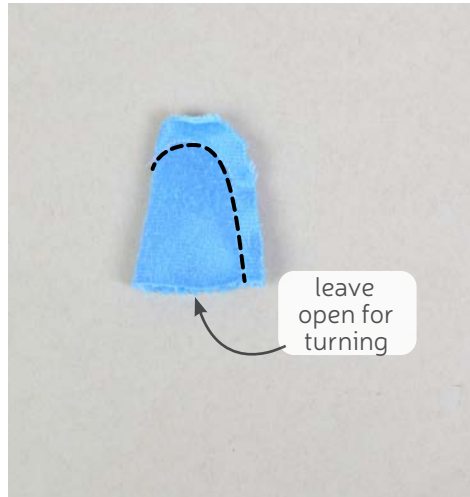


22. ATTACH THE EARS



sew desu ne?

| WWW.CHOLYKNIGHT.COM |



23. SEW THE HORN

- Grab your **HORN** piece (I). Fold it in half lengthwise with right sides together and the raw edges matching up. It should make the piece into a rounded triangle shape.
- Sew the piece together along one side and around the top. Leave the bottom, slightly curved edge open for turning the piece.
- Turn the piece right side out, then stuff it semi-firmly with stuffing.



24. ATTACH THE HORN

- Sew a gathering stitch around the opening of the **HORN** (I) and cinch it closed similar to the **EARS** (H) from before.
- Take the cinched end of the horn and align it over the forehead of your Lapras. Center it over the head seam about $\frac{3}{4}$ " below the top seam.
- Ladder stitch the horn in place similar to the ears from before. Sew all the way around the base.

sew desu ne?

| WWW.CHOLYKNIGHT.COM |



25. SEW THE SHELL HALVES

- Grab your **SHELL** pieces (F). Take two of them and align them with right sides facing and the raw edges matching up.
- Sew the pieces together along the **center back edge**. This is the shorter of the two curved edges, but it's also labeled on the paper pattern for extra help.
- Open up the pieces when complete, then repeat with your remaining shell pieces for two halves total.



26. SEW THE SHELL

- Take your two **SHELL** half pieces (F) and align them with right sides facing and the raw edges and center seams matching up.
- If you haven't already, note the **opening for turning marking** found on the paper pattern for the piece, near the center top of the shell. Sew around the entire shell, but leave an opening near the center top for turning the piece.
- Turn the shell right side out through the opening.

sew desu ne?

| WWW.CHOLYKNIGHT.COM |



27. STUFF THE SHELL

- To make the outer ridge of the **SHELL** (F), top stitch around the outer edge, about $\frac{3}{4}$ " in from the edge.
- Use the opening from before to stuff the shell ridge. Hemostats are especially helpful here, but even a blunt tool like a chopstick could work. Use small bits of stuffing and work slowly to avoid the shell looking lumpy.
- When complete, tuck in the seam allowances from the opening and ladder stitch the shell closed.



28. ALIGN THE SHELL

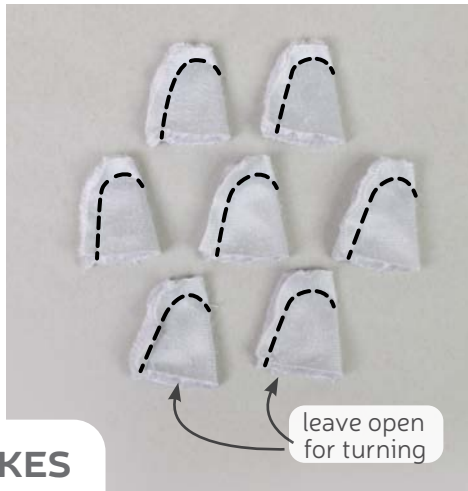
- Now we're going to take the sewn **SHELL** piece (F) and attach it to the back of your Lapras by hand. The paper pattern for the **BODY** (D) has a **placement guide** for where it should be attached. You can transfer it by cutting along the **placement guide** and using the template to trace onto the body. This works well as a start.
- However, your body shape can end up different due to fabric and stuffing. So for the final marking, you'll also want to place your shell onto the back of your Lapras so it's close to the **placement guide**. The outer ridge will lie relatively flat, but the center may be a little loose. That's okay, we'll be stuffing it in the next step. Then trace where the shell actually aligns on your body piece. Be sure the shell is nicely centered. Stick pins down into the shell and through the body to hold it while we baste it next.

sew desu ne?

| WWW.CHOLYKNIGHT.COM |

- a. Use the **placement lines** from the previous step to start basting the shell to the body of your Lapras. The shell is big, so it may shift on you a little. Take about a ½" stitch into the shell, then another into your **placement line**.
- b. Continue stitching around, then leave an **opening for stuffing** near the base of the shell. Make sure it's centered and make any adjustments needed.
- c. Stuff the shell semi-firmly with stuffing through the opening you left in the base.
- d. Once the shell looks full and round, ladder stitch around the shell once more with tinier, neater stitches to secure it permanently.

29. STUFF THE SHELL

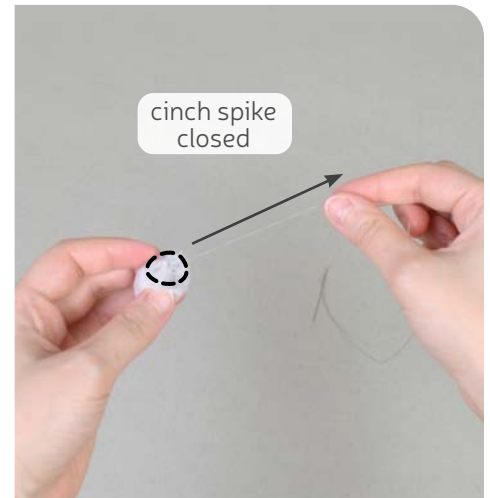


30. SEW THE SHELL SPIKES

- a. Grab your **SHELL SPIKE** piece (G). Fold it in half lengthwise with right sides together and the raw edges matching up. It should make the piece into a rounded triangle shape.
- b. Sew the piece together along one side and around the top. Leave the bottom, slightly curved edge open for turning the piece. Repeat six more times so you have seven spikes total.
- c. Trim the excess seam allowance around the top of the spike to reduce bulk.

sew desu ne?

| WWW.CHOLYKNIGHT.COM |



31. CINCH THE SHELL SPIKES

- Turn the **SPIKES** (G) right side out through the openings in the bottom.
- Stuff the spikes lightly with stuffing.
- Sew a gathering stitch around the opening of the spikes and cinch them closed similar to the **EARS** (H) and **HORN** (I) from before.

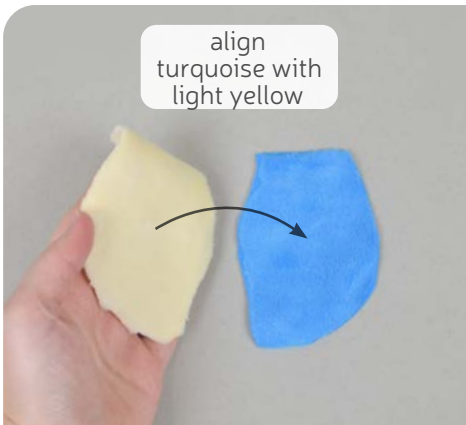
- Take your **SPIKES** (G) and start attaching them to the back of your **SHELL** (F). Stitch them in place with a ladder stitch around the base, similar to the **HORN** (I) from before. The first three are attached in a column along the **center back seam**.
- Then two are attached on each side, between the three in the middle. This should result in four spikes on both sides, seven total.



32. ATTACH THE SHELL SPIKES

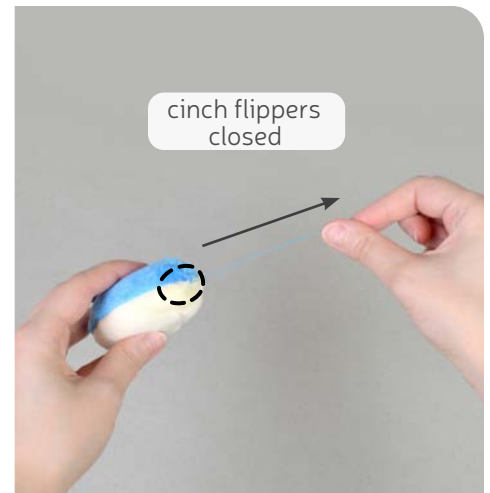
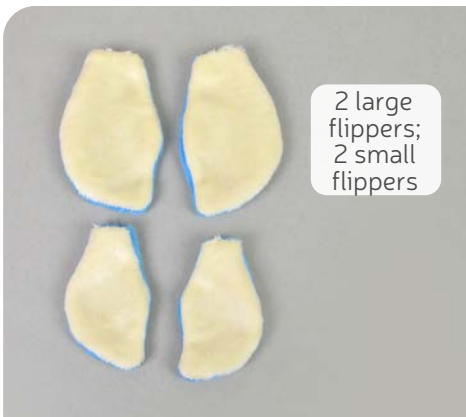
sew desu ne?

| WWW.CHOLYKNIGHT.COM |



33. SEW THE FLIPPERS

- Grab your **FLIPPER** pieces (J & K). Take one from your turquoise fabric and one from your light yellow fabric. Align them with right sides facing and the raw edges matching up.
- Sew the flippers together around the long curved edge. Leave the short straight edge free for turning the piece right side out later.
- Trim the excess seam allowance around the curves of the flipper, this will help reduce bulk for when the piece is turned later.



34. CINCH THE FLIPPERS

- Turn the **FLIPPERS** (J & K) right side out through the opening you left before.
- Stuff the flippers with stuffing so they're semi-firm.
- Sew a gathering stitch around the opening of the flipper and cinch it closed similar to the **EARS** (H) from before.

sew desu ne?

| WWW.CHOLYKNIGHT.COM |



- a. Align the **FRONT FLIPPERS** (J) onto the body of your Lapras. The paper pattern for the **BODY** (D) has a **placement guide** for extra help. Be sure that the tip of the flipper is pointing toward the tail and the turquoise side is facing up. For even better results, try to get the **flipper seam** to line up with the **body/belly seam** so the turquoise and light yellow fabrics line up.

- b. Sew the base of the flipper to the body using a ladder stitch like with the **EARS** (H) or **HORN** (I) from before. Repeat on the other side of the body for both front flippers.

- a. Take your sewn and stuffed **BACK FLIPPER** (K) and repeat the same process near the back of the Lapras body. Align it along the **body/belly seam** so the turquoise side is facing up and the tip is pointing toward the tail.

- b. Ladder stitch the base of the flipper to the body. Repeat with both flippers so you have one on each side.



36. ATTACH THE BACK FLIPPERS



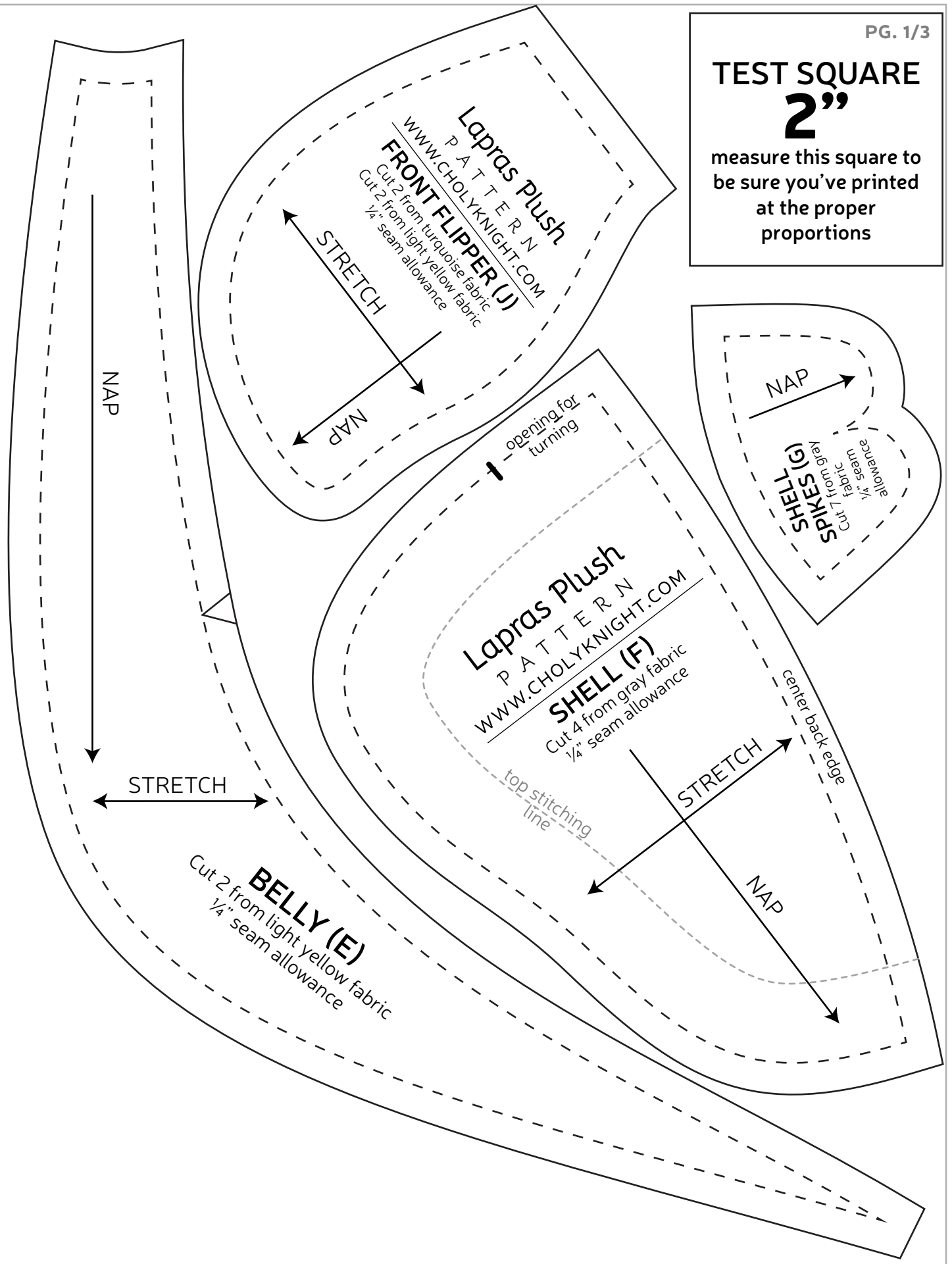
CONGRATS!
This completes your plush! Now give it a big hug!

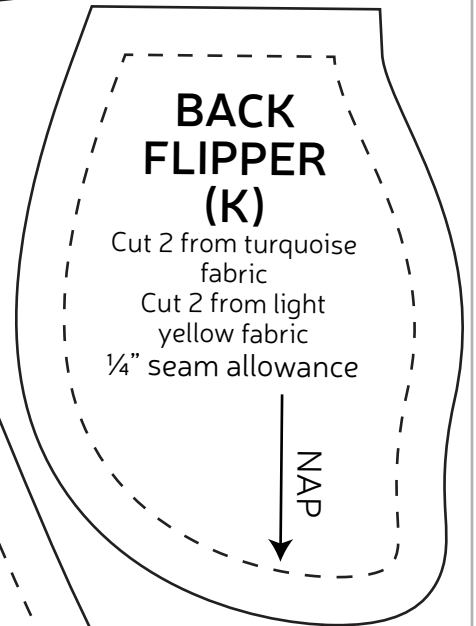
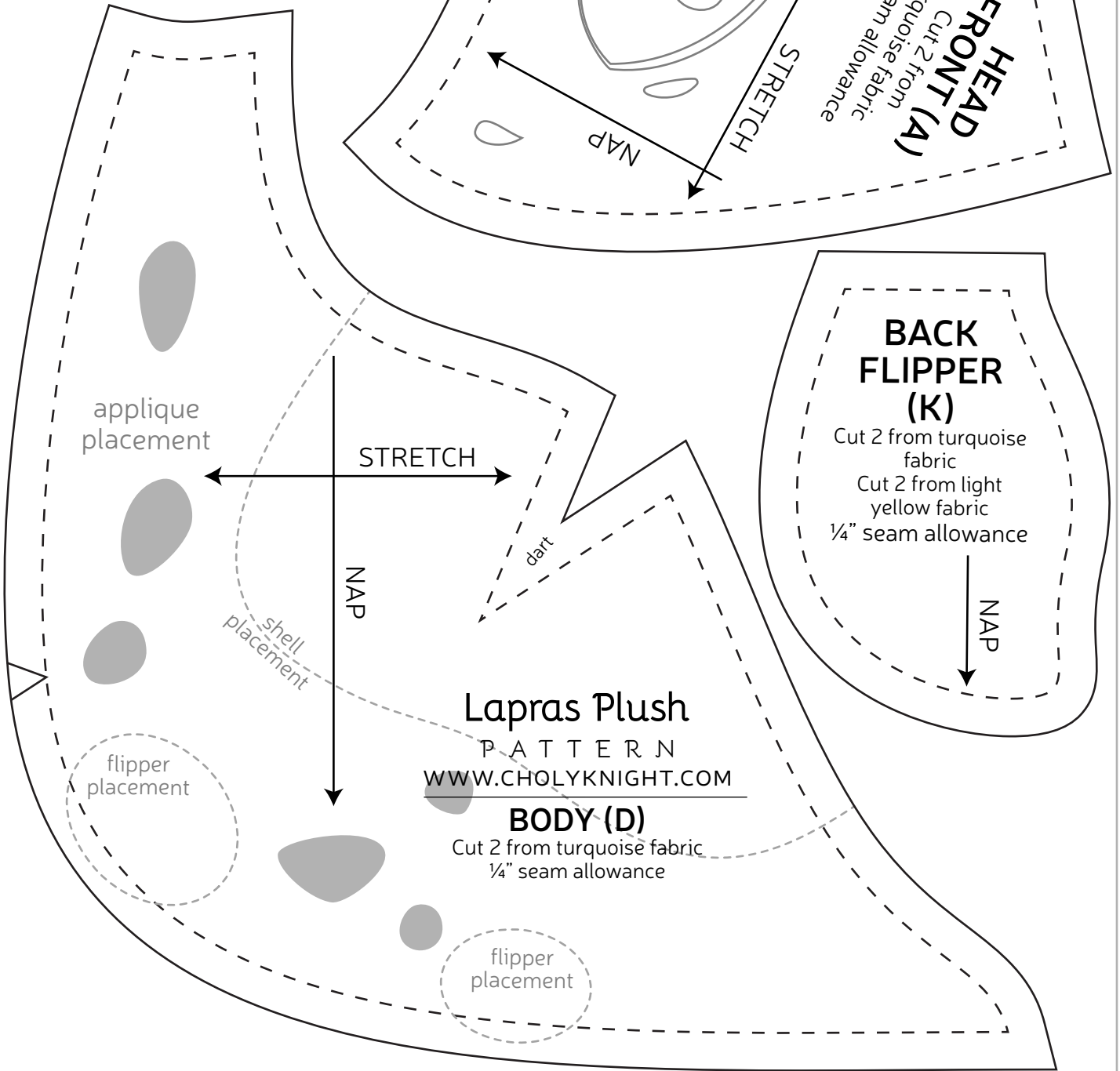
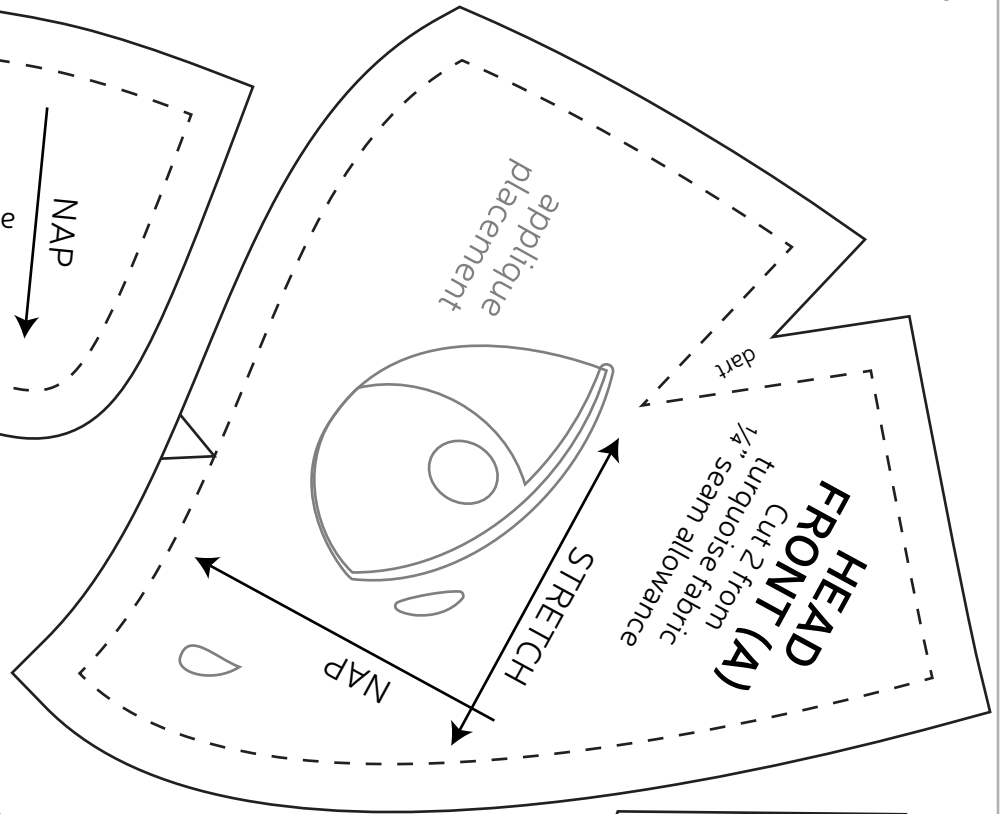
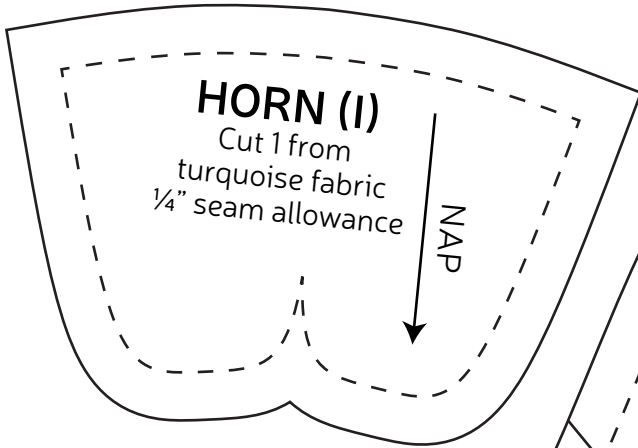
sew desu ne?

| WWW.CHOLYKNIGHT.COM |

TEST SQUARE 2"

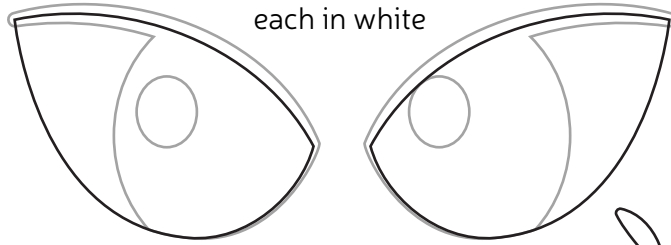
measure this square to
be sure you've printed
at the proper
proportions





EYE WHITES

applique
trace & cut 1
each in white



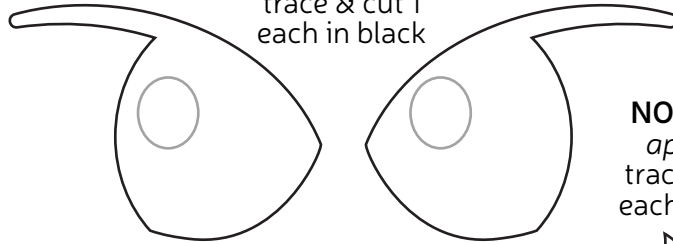
EYEBROW

applique
trace & cut
2 in black



PUPILS

applique
trace & cut 1
each in black



NOSTRILS

applique
trace & cut 1
each in black



BODY SPOTS

applique
trace & cut 2 each in
dark turquoise

