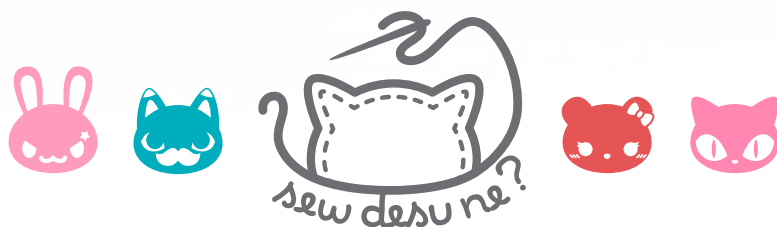


# mew PLUSH



a free sewing pattern by



# mew plush

The legendary last Pokemon in the Kanto Pokedex, it's Mew! This mysterious and mischievous little guy is extremely impish and cute. It has a small body with a rounded, cat-like head. It also has tiny arms, big feet, and a curvy tail.

The tail would be a great opportunity for wiring so it's posable. So there is both a curved tail option if you'd rather not wire it, or a straight option that's much easier for wiring and posing.

## SKILLS USED:

- Fusible web applique
- Curved sewing
- Basting
- Darts
- Ladder stitch
- Sewing small pieces
- Matching notches and points

## DIFFICULTY:



The most difficult part of this plush is matching all the points in the curves of the ear and legs. The arms, feet, and tail are also sewn on by hand, so give yourself more time for that.

## MAKES:

**ONE PLUSH:** about 6" tall from bottom of body to top of head, 4½" wide from each side of head, and 4½" long from nose to back of body.



**sew desu ne?**

| [WWW.CHOLYKNIGHT.COM](http://WWW.CHOLYKNIGHT.COM) |

## MATERIALS & TOOLS:

- ¼ yd. of pink fabric for main body
- **OPTIONAL WIRE SUPPLIES FOR ADJUSTABLE TAIL**
  - 15" of 10-12 gauge jewelry wire
  - about 30" of 1" wide thin scrap material, like cotton, fleece, or flannel
  - jewelry pliers
  - wire cutter
  - hot glue
  - poly pellets (poly pellets are used to help offset the weight of the wired tail)
  - 9" x 4" of scrap fabric for poly pellet pouch
  - Spoon or funnel for filling poly pellets
- **APPLIQUE SUPPLIES:**
  - 3" x 3" scrap of white applique fabric for eye whites and eye shines
  - 3" x 3" scrap of blue applique fabric for irises
  - 2" x 2" scrap of light blue applique fabric for eye highlights
  - 2" x 2" scrap of pink applique fabric for paw pads
  - 6" x 6" piece of light or heavy duty fusible web
- sewing thread to match main fabric and applique fabrics
- poly-fil stuffing
- basic sewing tools (sewing machine, scissors, iron, needles, pins, fabric marker, seam ripper)

10-12 GAUGE  
JEWELRY WIRE



PLIERS  
& WIRE  
CUTTER



wire cutter  
is built in

## FUSIBLE WEB:

- Fusible web adhesive is a sheet of adhesive with a paper backing.  
**Not to be confused with fusible interfacing**, which is adhesive attached to a fabric/fiber backing.
- Some common brands are **Pellon** & **HeatnBond**
- In countries outside the US, it may also be known as **bondaweb**
- It comes in **light** and **heavy duty** varieties. Lightweight strength is meant for applique you intend to sew later. Heavy duty versions are for a no-sew bond. If you try to sew them later your machine might have trouble penetrating the glue.



lightweight  
fusible



heavyweight  
fusible

sew desu ne?

| WWW.CHOLYKNIGHT.COM |



## fabric comparison:



**MINKY VS. FELT**



## SUGGESTED FABRICS:

### MINKY OR FLEECE

Medium weight, plush fabrics with about 20%-30% stretch along the crosswise grain work best for this project. The varieties shown to the left are some good options and names to look for. Try to avoid heavyweight versions of fleece that are intended for outdoor apparel or they may cause trouble for the detailed areas.

You can also use non-stretch fabrics (such as felt), but be aware that the curves will be more difficult to sew and the result will look different. The plush will become more elongated and the edges will look harder.

10" of minky  
stretches to 13"  
= 30% stretch



**sew desu ne?**

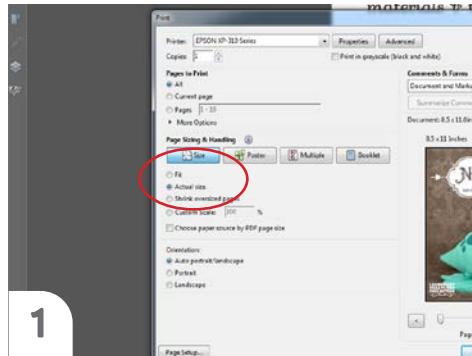
| [WWW.CHOLYKNIGHT.COM](http://WWW.CHOLYKNIGHT.COM) |

## PRINTING THE PATTERN:

Set your computer to print **PAGES 27-29**.

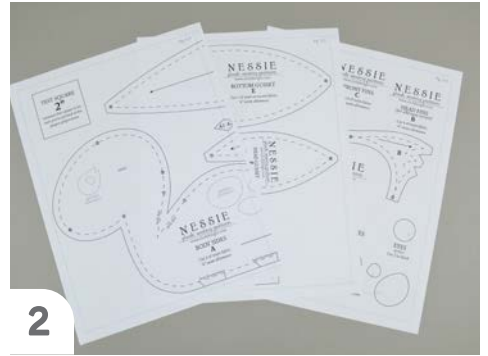
If you're unfamiliar with printing and assembling a .pdf pattern, read the steps to follow.

For the best results, use a .pdf reader like **ADOBE READER**. That's what is shown here and will give you the most control over the settings.



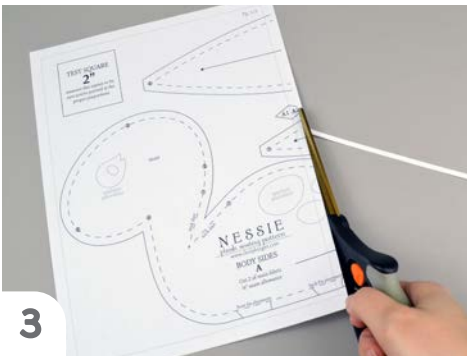
1

At the print dialog box, check the box that says print at "Actual Size" or 100%. Any other selection (such as "Fit to page") will distort the pattern so it's slightly larger or smaller and we don't want that.



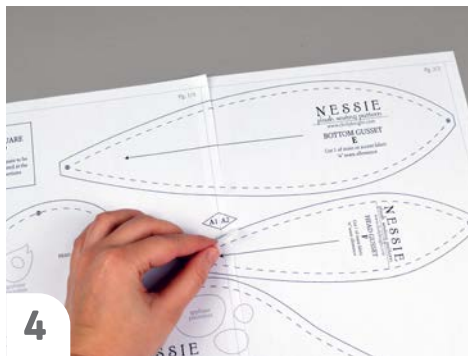
2

Print the pages needed for the file. You might have one or more. Either way, be sure you have the full collection by noting the page numbers in the corner.



3

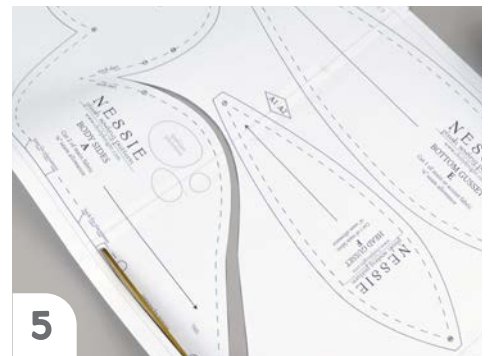
It's likely your printer will have a margin that ensures your image doesn't print to the very edge. Assembly will be easier if you trim off this blank margin edge. This will give you pages that overlap slightly during assembly. If you trim across the gray outline boxes, this will give you pages that don't overlap but rather butt against each other.



4

To line up the pattern pages, match up the corresponding diamond shapes. Each diamond will have a letter, so it's simply a matter of matching A1 to A2, B3 to B4 and so on. The faint gray lines indicate the border of every page, you should be able to line those up as well. When the diamond goes together, tape it in place.

If you have many pages, it's easier to tape up the pages into rows first. Then tape the rows together into a full block.



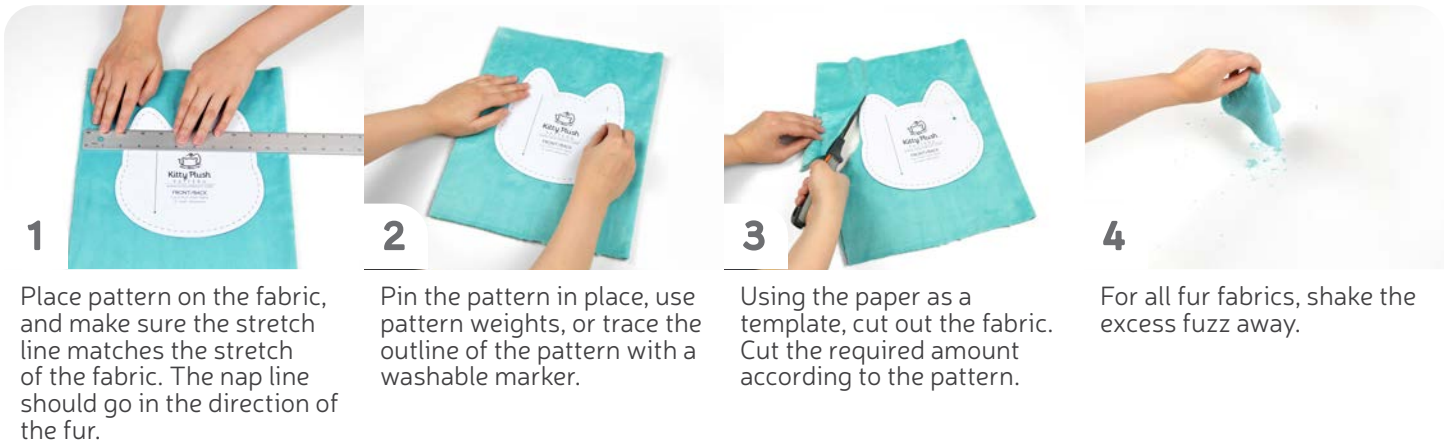
5

You can trace the patterns onto a different paper, or you can also just cut them straight from the printer paper -- be sure that each piece is fully taped together along the joins so they don't fall apart when you cut them.

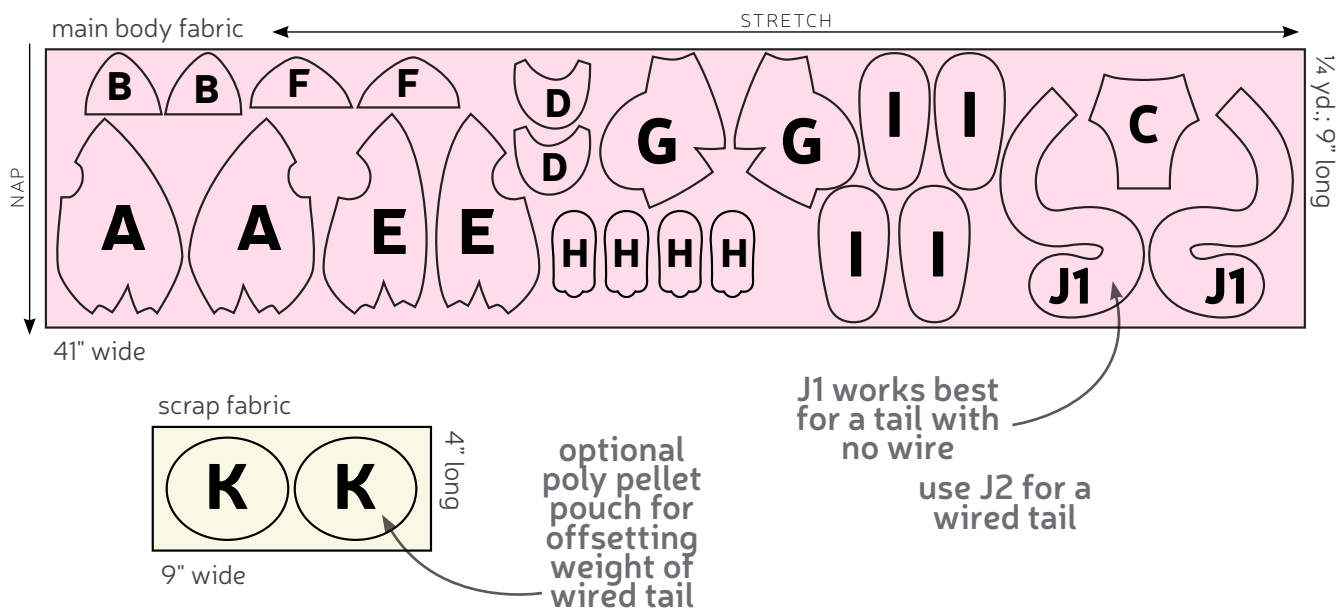
**sew desu ne?**

| [WWW.CHOLYKNIGHT.COM](http://WWW.CHOLYKNIGHT.COM) |

## CUTTING THE FABRIC:



## CUTTING LAYOUT:



## BEFORE YOU BEGIN:

- Briefly read the project instructions so you know what to expect.
- If desired, mark the cut fabric pieces with the markings and symbols from the pattern. Or wait until the applicable step before transferring.
- Note that a 1/4" seam allowance is used throughout the project, which is included in the pattern templates.

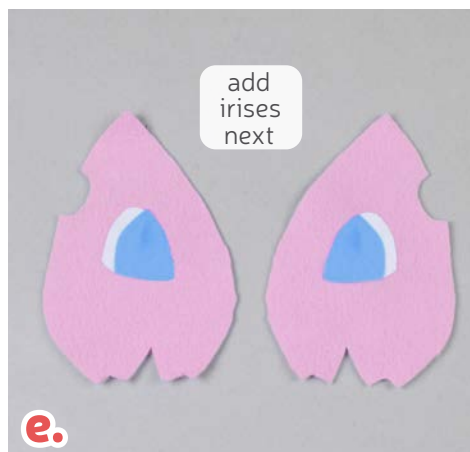
**sew desu ne?**

| [WWW.CHOLYKNIGHT.COM](http://WWW.CHOLYKNIGHT.COM) |



## 1. PREPARE THE FACE APPLIQUE

- a. Grab your fusible web and applique templates. Trace the face and foot templates. You'll need:
  - **eye white** (2)
  - **irises** (2)
  - **eye highlights** (2)
  - **eye shines** (6)
  - **foot pads** (2)
- b. Fuse the bumpy (adhesive) side of the fusible web onto the applique fabrics, following the color guides on the paper templates:
  - **eye whites & eye shines** on white
  - **irises** on blue
  - **iris highlights** on light blue
  - **foot pads** on pink
- c. Cut out your applique pieces and grab your two **HEAD FRONT** pieces (A). Grab your first applique layer, the **eye whites**. Set your paper pattern on top of the head front piece. Align the applique piece on top where the placement markings are. Next, carefully pull the paper pattern away while holding the applique piece in place.



- d. Fuse the first applique layer (the **eye whites**) with your iron. Use a press cloth, such as a scrap piece of cotton. This will help protect any polyester or fuzzy fabrics from melting or scorching.
- e. Add the next layer, the **irises**.
- f. Continue building up the eye with the next piece, the **eye highlights**. Arrange and fuse it the same as the other pieces using the paper pattern (and the photo) as a guide. Lastly, add the smallest pieces like the **eye shines**. Make sure you have both sides of the head when complete.

sew desu ne?

| [WWW.CHOLYKNIGHT.COM](http://WWW.CHOLYKNIGHT.COM) |

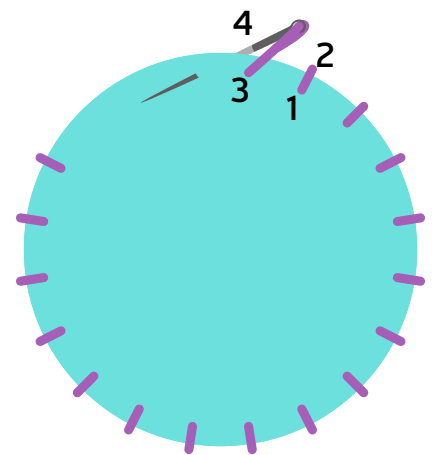
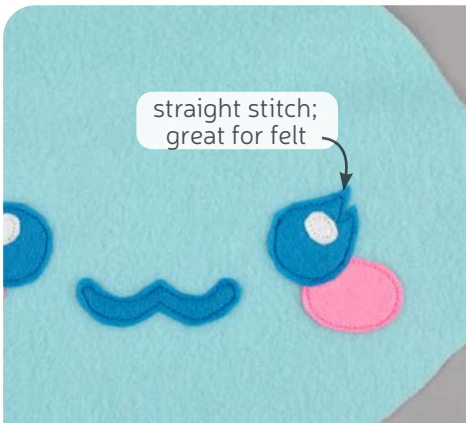


## 2. APPLIQUE THE OTHER PIECES

- a. Take this time to also applique your other body pieces using the same method. Two of the **FEET** (I) need **foot pads**.

If you used heavy duty fusible web, you can keep the pieces fused without sewing, or you can sew them in place a number of ways. I've used a zigzag stitch here.

→ **Refer to the next step for some other applique options.**



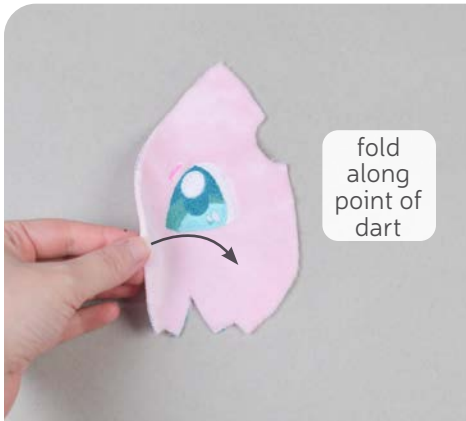
### 2a. OTHER APPLIQUE OPTIONS

- Other good options for applique include a straight stitch, which involves sewing around the edge of the applique pieces with a straight stitch using matching thread -- about 1/8" in from the edge.
- You can also applique by hand; I prefer a whipstitch. Thread a hand-sewing needle with some matching thread and knot it. Bring the thread up from the back of the project; about 1/8" in from the edge of the applique shape. Bring it down perpendicular from the curve, just outside of the applique shape. This completes one stitch.
- For the next stitch, bring the needle back up about 1/8" away from the previous stitch and 1/8" in from the edge just as in the first stitch. Once again, bring it down just outside the applique shape. Continue this way until you've sewn around the shape.

sew desu ne?

| [WWW.CHOLYKNIGHT.COM](http://WWW.CHOLYKNIGHT.COM) |





### 3. SEW THE HEAD FRONT DARTS

- Grab both of your **HEAD FRONT** pieces (A) that have the eyes appliqued. These pieces have a **dart** along the bottom that helps form the shape of the head. They're the small wedges cut into the main shape. They're also labeled on the paper pattern for easy identification. Start by folding the fabric along the point of the **dart** so the right sides are facing and the raw edges match up.
- Sew from the opening of the **dart** down to the fold of the fabric. Try to blend your stitching into the fold of the fabric for a smooth transition and a rounder finish to the stuffed plush.
- When complete, each head front piece should have one dart along the bottom.

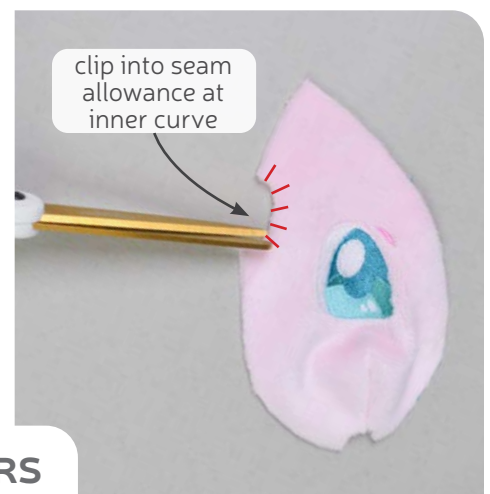
#### DARTS:

Darts are a v-shaped wedge sewn into a pattern piece that create a 3D shape in the fabric.

The two lines of the darts are sometimes called the **LEGS**. These lead up to the **POINT**.

You can think of darts like a partial seam. One that only goes part-way through the fabric.

- Grab your two **EAR FRONT** pieces (B). These will be attached to the inner curves of your **HEAD FRONT** (A) next. These pieces have **numbered points** for easy identification, **points 3 and 4**.
- To make the alignment a little easier, it helps to make small clips into the seam allowance of the inner curve on the head front. This will allow the fabric to stretch more.



### 4. PREP THE FRONT EARS

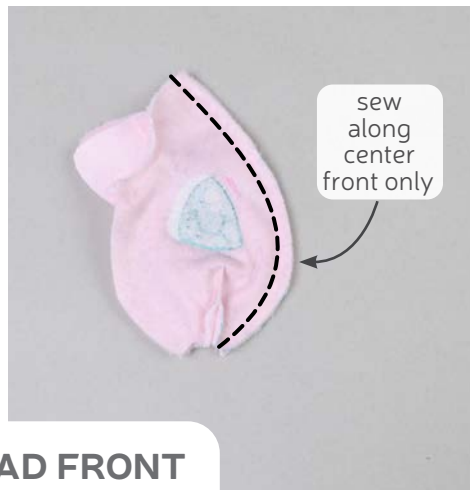
sew desu ne?

| WWW.CHOLYKNIGHT.COM |



## 5. SEW THE FRONT EARS

- Stretch the inner curve of the **HEAD FRONT** (A) to match up with the **FRONT EAR** (B). *Points 3 and 4* should match up. This will help ensure the ears aren't attached backwards.
- Sew the head front to the ear from *points 3 to 4*.
- Repeat with your remaining head front and ear piece so you have both sides of the head.



## 6. SEW THE CENTER HEAD FRONT

- Take one of your **HEAD FRONT** pieces (A) and align it with the other so right sides are facing and the raw edges match up.
- Sew the pieces together along the center edge. Sew from the top corner down to the bottom corner.
- Open up the pieces when complete.

sew desu ne?

| [WWW.CHOLYKNIGHT.COM](http://WWW.CHOLYKNIGHT.COM) |



## 7. SEW THE INNER LEGS

- Grab your **INNER LEG** pieces (D) and your **BELLY** (C). The inner curve on both the belly and inner legs will match up next. They're labeled with **points 1 and 2** for easy alignment.
- Align the inner curve of the inner leg with the inner curve of the belly. Match up the **notches** on the inner legs with the **notches** on the belly. Also line up **points 1 and 2**.
- Sew the inner leg to the belly along the inner curve from **points 1 to 2**. Repeat with the other inner leg piece so both are joined.



## 8. SEW THE FRONT NECK

- Grab your **HEAD FRONT** piece from before (A) and your **BODY FRONT** so far. The **neck edges** of both of these pieces will be joined next.  
The neck edge on the belly is marked with a **circle marking** in the center for easy alignment.
- Layer the head front over the body front, matching up the raw edges and **circle marking** at the center head seam. Pin the fabrics together.
- Sew the head front to the body front along this **neck edge**.
- Open up the pieces when complete.  
→ **This completes the front half of the body! Set it aside for a moment while we work on the back of the body.**

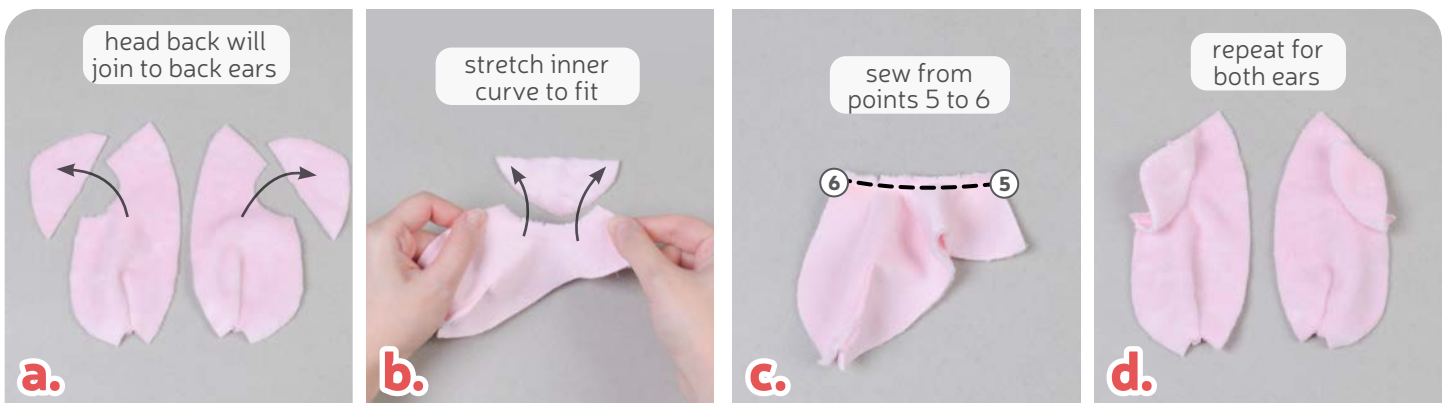
sew desu ne?

| [WWW.CHOLYKNIGHT.COM](http://WWW.CHOLYKNIGHT.COM) |



## 9. SEW THE BACK HEAD DARTS

- Grab your **HEAD BACK** pieces (E). These pieces also have **darts** along the bottom like the head front. Sew them the same way, starting by folding the fabric along the point of the **dart**. This should match up the slanted edges.
- Sew from the opening of the dart into the fold of the fabric.
- Repeat this for both head side pieces so you have two **darts** total.



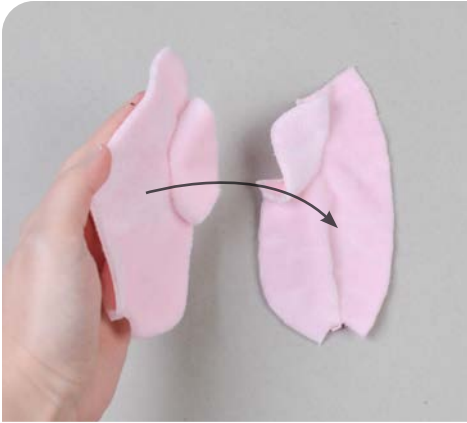
## 10. SEW THE BACK EARS

- Grab your **HEAD BACK** (E) and **EAR BACK** (F) pieces. We're going to repeat steps 5-6 but with the back of the head instead. This begins with finding the two edges with **points 5 and 6**. Clip the seam allowance in the inner curve of the head back.
- Stretch the inner curve of the head back to match up the edge on the ear back. Line up **points 5 and 6** to ensure the ear isn't attached backwards.
- Sew the head back to the ear from **points 5 to 6**.
- Repeat for both head back pieces for two ears total.

sew desu ne?

| [WWW.CHOLYKNIGHT.COM](http://WWW.CHOLYKNIGHT.COM) |





## 11. SEW THE HEAD BACK

- Take your **HEAD BACK** pieces (E & F) and align them with right sides facing and raw edges matching up.
- If you haven't already, locate the **opening for turning markings** found on the paper pattern for the head back. Transfer them over to the wrong side of the fabric. Sew the head back pieces together along this edge only, but leave the opening that you marked.
- Open up the pieces when complete.  
→ *Set aside your head back for a little while as we work on the body back.*



## 12. SEW THE BODY DARTS

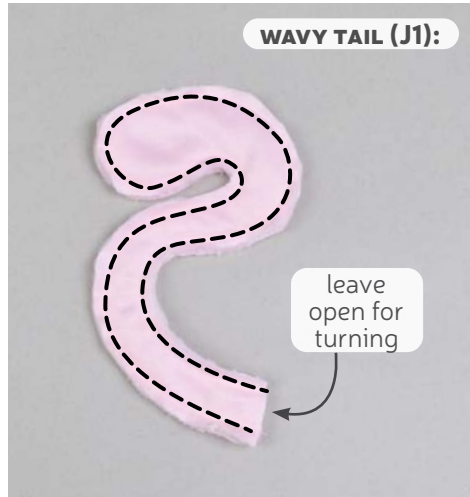
- Grab your **BODY BACK** pieces (G). This piece also has a **dart**, found in the bottom corner. Sew it similar to the others, starting by folding it along the point of the dart and matching the slanted lines.
- Sew starting at the opening and work toward the point. Try to blend your stitching into the fold of the fabric. This will create a rounder finish for your plush.
- Repeat with your remaining body back piece for two darts total.

**sew desu ne?**

| [WWW.CHOLYKNIGHT.COM](http://WWW.CHOLYKNIGHT.COM) |



### 13. SEW THE TAIL



- a. Before we finish sewing the body, we're going to sew the tail. Grab your **TAIL** pieces (J1 or J2). Align them with right sides together and the edges matching up.
- b. Sew the tail pieces together around the long curved edge. Leave the short straight edge free for turning the piece right side out later.

- a. Trim the excess seam allowance at any inner and outer curves. This will reduce bulk and increase flexibility when the piece is turned. Turn the tail right side out through the opening in the end.

- b. Now is where the instructions divert:

**IF YOU DON'T PLAN TO USE WIRE IN YOUR TAIL:** stuff the tail now. Fill it semi-firmly, just enough so it takes shape and the rounded end looks full. Then move onto step 15.

**IF YOU DO PLAN TO USE WIRE IN THE TAIL:** Don't stuff the tail yet. Hold onto the tail until after the rest of the plush is sewn. Skip ahead to step 16.



### 14. TURN & STUFF THE TAIL

**BASTING:**

A form of temporary sewing meant to hold pieces in place. A long stitch length is often used for this reason. The finished result is not meant to be seen and sometimes is even removed later (depending on your project).

**15. BASTE THE TAIL**

- a. If you haven't already, note the **tail markings** found on the paper pattern for the **BODY BACK** (G). These also serve as **placement lines** if you're using a non-wired tail. Take your stuffed **TAIL** (J1) and align it over the **placement lines**, slightly above the body back **dart**.
- b. Baste the tail in place within the seam allowance to hold it in place for future steps.

**16. SEW THE BODY BACK**

- a. Take your two **BODY BACK** (F) pieces and align them with right sides facing and the raw edges matching up.
- b. Sew them together along the edge with the **dart** from step 12.  
**IF YOU ARE USING A TAIL WITHOUT WIRE:** you'll be securing the tail into the seam during this step.  
**IF YOU ARE LATER ADDING A TAIL WITH WIRE:** leave a **tail opening** where it's indicated on the paper pattern above the body dart.
- c. Open up the pieces when complete.

**sew desu ne?**

| [WWW.CHOLYKNIGHT.COM](http://WWW.CHOLYKNIGHT.COM) |

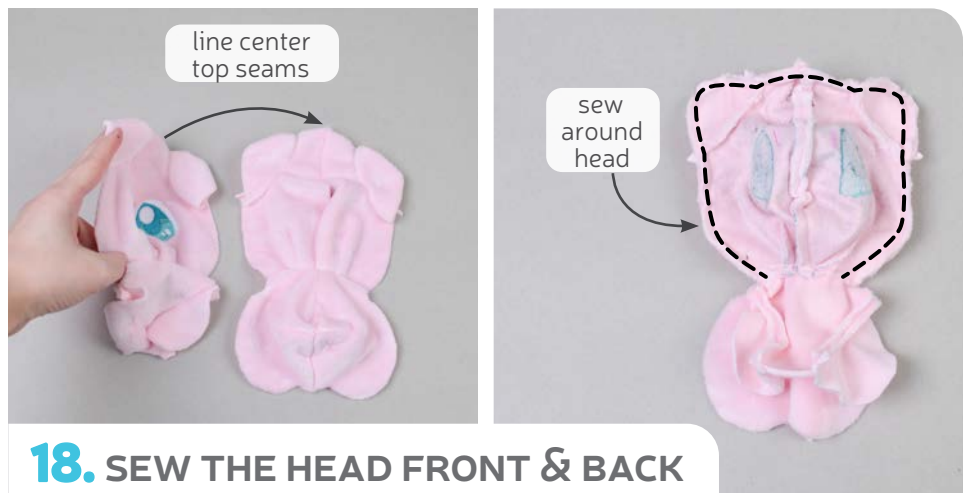


## 17. SEW THE BACK NECK

- Grab your **HEAD BACK** pieces from before (E) and your **BODY BACK** (F). The **neck edges** of both of these pieces will be joined next.
- Layer the head back over the body back, matching up the raw edges and the **center seams**. Pin the fabrics together.
- Sew the head back to the body back along this **neck edge**.
- Open up the pieces when complete.

- Grab both of your front and back pieces so far. Align them with right sides facing. We're going to sew around the entire body. Experts should be able to handle this all in one go, but we're going to break it down into several parts for beginners.

Start by aligning the head pieces. Match up the **head front seam** with the **head back seam**. The **neck seams** (from steps 8 and 20) and the **ear seams** (from steps 5 and 10) should also match up.



## 18. SEW THE HEAD FRONT & BACK

- Sew the head front to the back all the way around, starting at one side of the neck and going to the other. Don't forget to pivot at the ears.

sew desu ne?

| [WWW.CHOLYKNIGHT.COM](http://WWW.CHOLYKNIGHT.COM) |



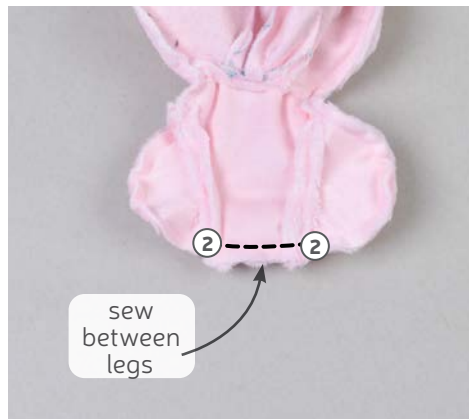
- a.** Next, line up the **BODY** pieces. This is the edge starting at the neck and going down to **point 1**. Pin the **INNER LEG** (D) to the **OUTER LEG** (F). It starts at **point 1** and goes around to **point 2**. Repeat on the other side with the other leg. Pin the fabrics together.
- b.** Sew from the neck down to **point 1** at the top of the leg. Next sew around the leg, from **point 1** to **point 2**.



## 19. SEW THE LEG



- a.** At the edge between the legs, the **center point** on the **BELLY** (C) will match up with the **back seam** (from step 19). Pin and sew between the legs, from one **point 2** to the other.
- b.** Lastly, finish up the other side by repeating step 19 in the other direction. Sew from **point 2 to 1**, then up the side, ending at the **neck seam**. When complete, you should have stitching around the entire body. You can check at **points 1 and 2** for any gaps. You can also check the neck seam.



## 20. FINISH THE BODY



sew desu ne?

| WWW.CHOLYKNIGHT.COM |



## 21. CLIP & TURN THE BODY

- Finish by trimming and clipping the seam allowances at the corners and curves. Begin with the outer corners at the tips of the ears.
- Then clip the seam allowances at the corners of the body, particularly at the **neck seam** and **points 1 and 2**. This will help reduce bulk and increase flexibility when the piece is turned later.
- Turn the body right side out through the opening in the back of the head.

→ *If you're using wire for your **TAIL**, continue below. Or if your tail won't have wire, skip ahead to step 26B.*



## 22. WRAP THE WIRE

- If you're using wire for the **TAIL**, take this time to prep it now. Grab your wire, your jewelry pliers, your hot glue gun, and the strip of thin scrap fabric. Begin by bending over the ends of the wire with the pliers to eliminate the sharp ends. Bend the wire onto itself by about 1/2" on both ends.
- Next, use the hot glue to wrap the fabric around the wire. Begin with a dollop of glue on the end of the fabric. Then press the wire into the glue so the strip is at an angle as shown. Fold the ends of the fabric over the end of the wire.
- From there, cover sections of the fabric in glue, then carefully wrap it around the wire. Keep the fabric strip at an angle so it wraps down the length of the wire.

sew desu ne?

| WWW.CHOLYKNIGHT.COM |



## 23. INSERT THE TAIL



- Continue wrapping the wire until it's entirely covered. Then fold over the ends of the fabric and secure it with more glue as necessary.
- Grab your **TAIL** from before (J1 or J2). Insert the wire into the tail so it reaches the tip. There will be a good bit leftover coming out of the opening.
- Grab your sewn body so far. Insert the end of the wire through the **tail opening** you left in the back and into the body.

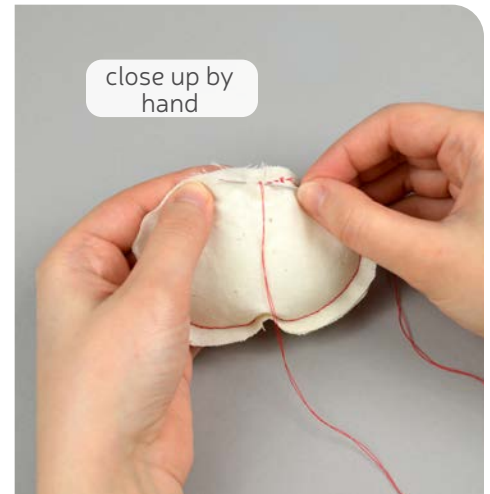
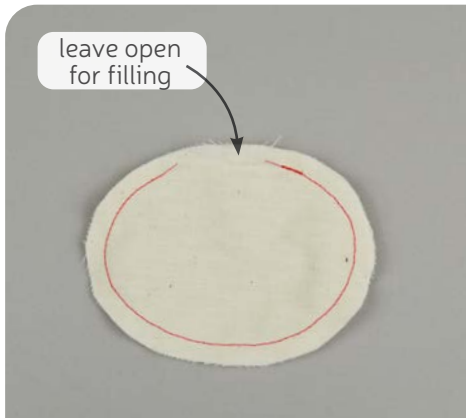
- Take your wire and wrap it around itself to make a circle. This will create a base for the tail so it's sturdy inside the body of the plush.
- Bend and settle the base of the tail along the bottom of Mew's body so it's as flat as you can get it.



## 24. CREATE THE TAIL BASE

sew desu ne?

| [WWW.CHOLYKNIGHT.COM](http://WWW.CHOLYKNIGHT.COM) |



## 25. SEW THE POLY PELLETT POUCH

- Grab your **POLY PELLETT POUCH** (K) pieces. If you haven't already, transfer the *opening for filling* markings found on the paper pattern for the pellet pouch. Take your two pellet pouch pieces and align them together (either way facing; doesn't matter). Sew around the perimeter of the oval, leaving an opening as indicated by the markings.
- Fill the pouch with poly pellets until it's almost full. I like to use a spoon for this, but some people prefer a funnel.
- Once you've finished, thread a hand sewing needle and stitch the opening closed with a whip stitch or back stitch. You can also sew it by machine, but go very slowly or just use the hand wheel. Sewing over a pellet will very likely break a needle.



## 26. STUFF THE BODY

- If you have a **POLY PELLETT POUCH**, take it and insert it into the body of your plush through the opening in the head. Rest it over the wire base you created in step 24.
- Then stuff the rest of the body over the pouch. Fill the body about halfway with stuffing.
- While the body is halfway stuffed, sneak extra bits of stuffing into each leg. Having stuffing in the body will help keep the leg stuffing in place. Fill up the last of the body when the legs are stuffed firmly and there are no wrinkles in the seams.

sew desu ne?

| WWW.CHOLYKNIGHT.COM |





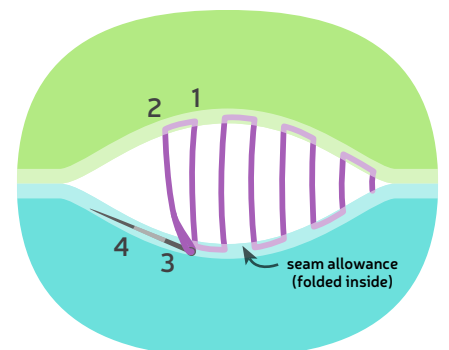
## 27. STUFF THE HEAD

- Next, fill up the head with stuffing. Be sure to get plenty in the nose area so there are no wrinkles in the seams or darts.
- While the head is almost full, sneak some stuffing into the ears. This will help keep the ear stuffing from falling out. Lastly, stuff the rest of the head until it's firm.
- Once the plush is stuffed, make sure the seam allowances in the opening are tucked inside and prepare to ladder stitch it closed. Thread a hand-sewing needle and knot it at the end. Insert the needle from the inside of the opening and out of the plush near one edge of the opening. This will leave the knot inside the plush.



## 28. SEW THE PLUSH CLOSED

- Continue from here doing a ladder stitch. Take a 1/8" stitch into the fold of one side of the opening, then go across and take another. Keep going down the opening until you reach the end.
- When you're finished, stitch a knot into the end of the seam. Then insert the needle near the finished knot and out of the plush about 1-2" away.
- Pull the thread through and hold it taut while snipping the thread. The excess thread should sink back inside the plush -- all hidden!



sew desu ne?

| [WWW.CHOLYKNIGHT.COM](http://WWW.CHOLYKNIGHT.COM) |



**TIP:**  
Adjust the wire at the base of the body (not just the tail itself) to help keep the body sitting upright.

## 29. SECURE THE TAIL

- IF YOUR TAIL IS WIRED**, you'll want to tuck under the seam allowances at the base of the tail, then ladder stitch it to the back corner of the body.
- IF YOUR TAIL IS NOT WIRED**, you may want to secure it in place so it stays pointing up. Ladder stitch a small bit of the tail to the back of the head so it doesn't flop down.



## 30. SEW THE ARMS

- Grab your **ARM** pieces (H). Take two of them and align them with right sides facing and raw edges matching up.
- The tiny fingers are a little detailed, so if you need help sewing them accurately, it helps to transfer the stitching line from the paper template. Trim away the seam allowance from the template along the fingers. Then use it as a tracing template on the wrong side of the fabric.
- Sew them together all the way around the traced line.

**sew desu ne?**

| [WWW.CHOLYKNIGHT.COM](http://WWW.CHOLYKNIGHT.COM) |



### 31. TURN & STUFF THE ARMS

- Trim the excess seam allowance around the tips of the fingers.
- To turn the pieces, cut a 1" slit through one layer of the fabric only, near the base. There's also a **cutting guide** on the paper pattern for extra help.
- Stuff the arms lightly with stuffing. Give them just enough so they take shape. You may want to put small bits in the fingers so they take shape as well.



### 32. ATTACH THE ARMS

- Take one of the arms and align it over the body. Place the cut side of the arm down onto the **BELLY** (C) right between the **INNER LEG** (D) and the **neck seam**.
- Ladder stitch the arms to the body, going around the cut from step 31. Sew near the arm seam when attaching the shoulder.
- For the underside of the arm, you'll have to flip it up and sew beneath the arm. Repeat for both arms.

sew desu ne?

| WWW.CHOLYKNIGHT.COM |



### 33. SEW THE FEET

- Grab all of your **FEET** pieces (1). Take two of them, one with the applied foot pad and one blank one. Align them with right sides facing and raw edges matching up.
- Sew entirely around the foot shape. Repeat with your remaining feet pieces for two total.
- To turn the pieces, cut a 1" slit through the blank layer of fabric only, near the base. There's also a **cutting guide** on the paper pattern for extra help.



### 34. BEGIN THE NEEDLE SCULPTING

- Stuff the **FEET** (1) semi-firmly with stuffing. Give it enough so there are no wrinkles around the outer edges of the fabric.
- Next, we're going to use needle sculpting to create the toes. These are lines hand-stitched into the outside of the foot. Begin by transferring the **stitching lines** from the paper pattern. Next, grab the longest hand sewing needle you have. Thread it with heavy duty thread (or doubled-over all-purpose thread if you don't have heavy-duty) and knot the end.
- Grab one of your feet. Insert the needle through the opening you've cut. Bring the needle out at the bottom of one of your **stitching lines**.

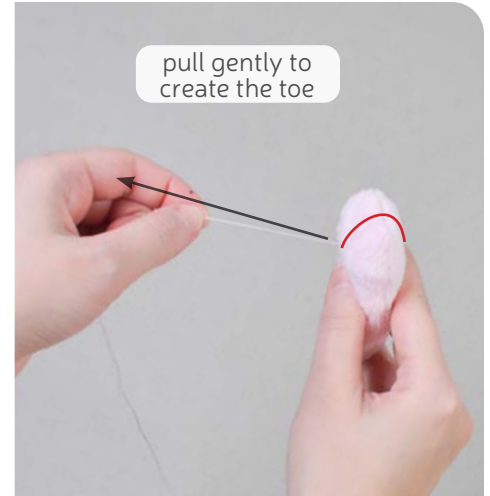
#### NEEDLE SCULPTING:

A form of shaping on a finished plush using thread to pull in and contour areas of an otherwise smooth surface. Because it is done from the outside, it counteracts the outward force of the stuffing inside the plush.

sew desu ne?

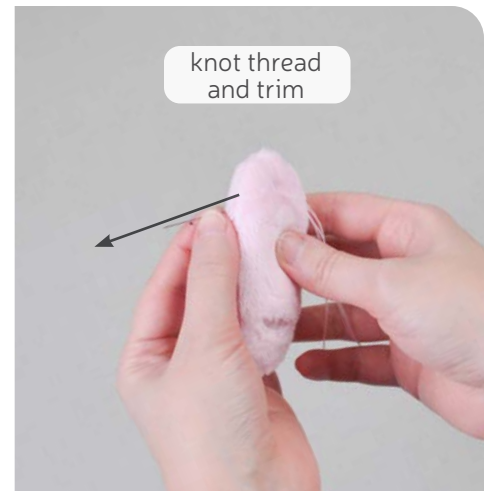
| WWW.CHOLYKNIGHT.COM |





### 35. WRAP THE TOES

- a. Pull the thread through, then wrap the thread around the **FOOT**.
- b. Insert the needle into the bottom of the **stitching line** on the other side of the foot. It should be directly opposite the first point. Bring it out at the same spot as before.
- c. Pull the needle through and allow the thread to wrap around the foot. Pull at the thread gently so it squeezes the foot and creates a line for the toe. Repeat the stitch you made once again, pushing the needle through the foot from one side to the other.



### 36. FINISH THE NEEDLE SCULPTING

- a. To move onto the next toe, stick the needle into the back of the foot as before, but instead bring it out at the bottom of the other **stitching line**. Then you can repeat the previous step to needle sculpt the toe for that area.
- b. Repeat this process, stitching through the foot and allowing the thread to wrap around the top, creating the toe line.
- c. When complete, tie off the thread, then bring it out and trim it like before with the ladder stitch in step 28. Then repeat steps 34-36 with your remaining foot so you have two total.

sew desu ne?

| WWW.CHOLYKNIGHT.COM |

- a. Take one of your **FEET** and align it over the **leg seam** (from step 19). The cut side should be facing down.
- b. Sew the foot to the leg using a ladder stitch. Go around the cut you made in step 33. Go around with long stitches for the first pass. Check that you like the placement, then go around again with tinier, neater stitches for the second pass. Repeat for both feet.



### 37. ATTACH THE FEET



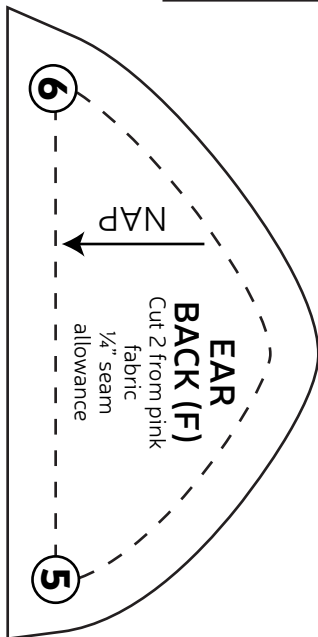
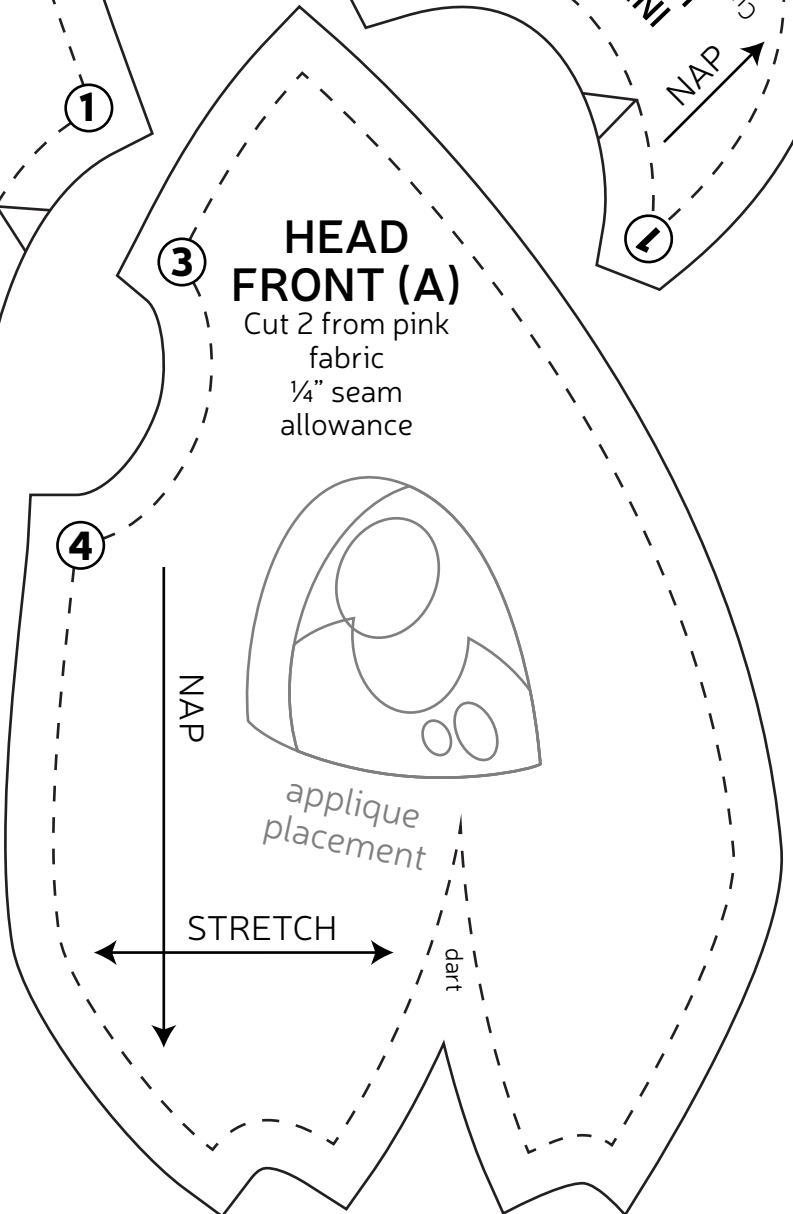
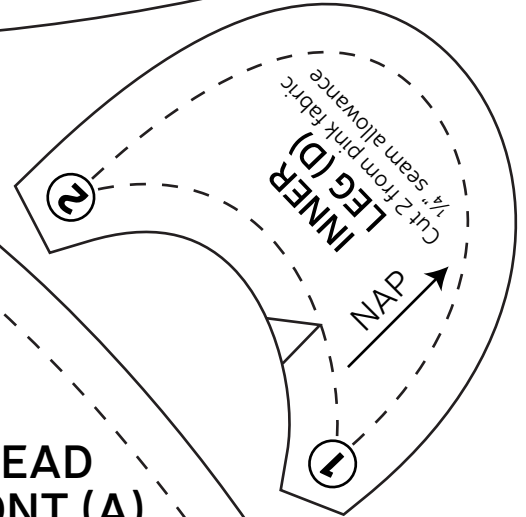
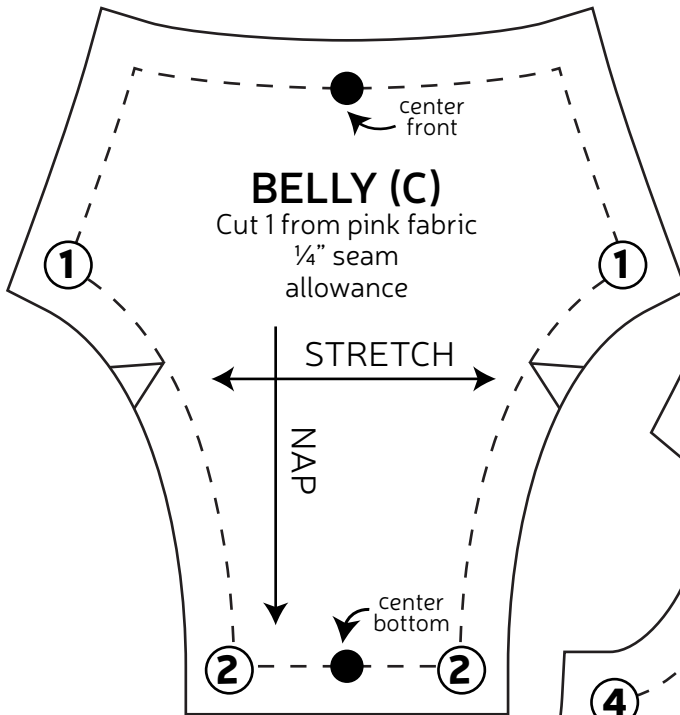
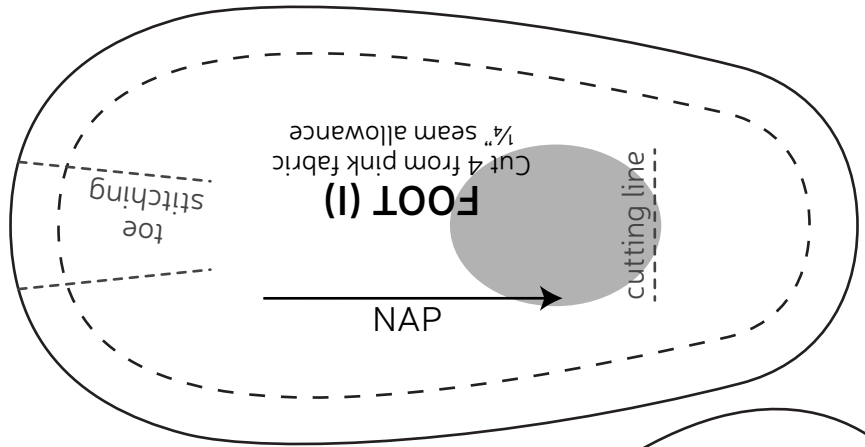
**CONGRATS!**  
This completes your plush! Now give it a big hug!

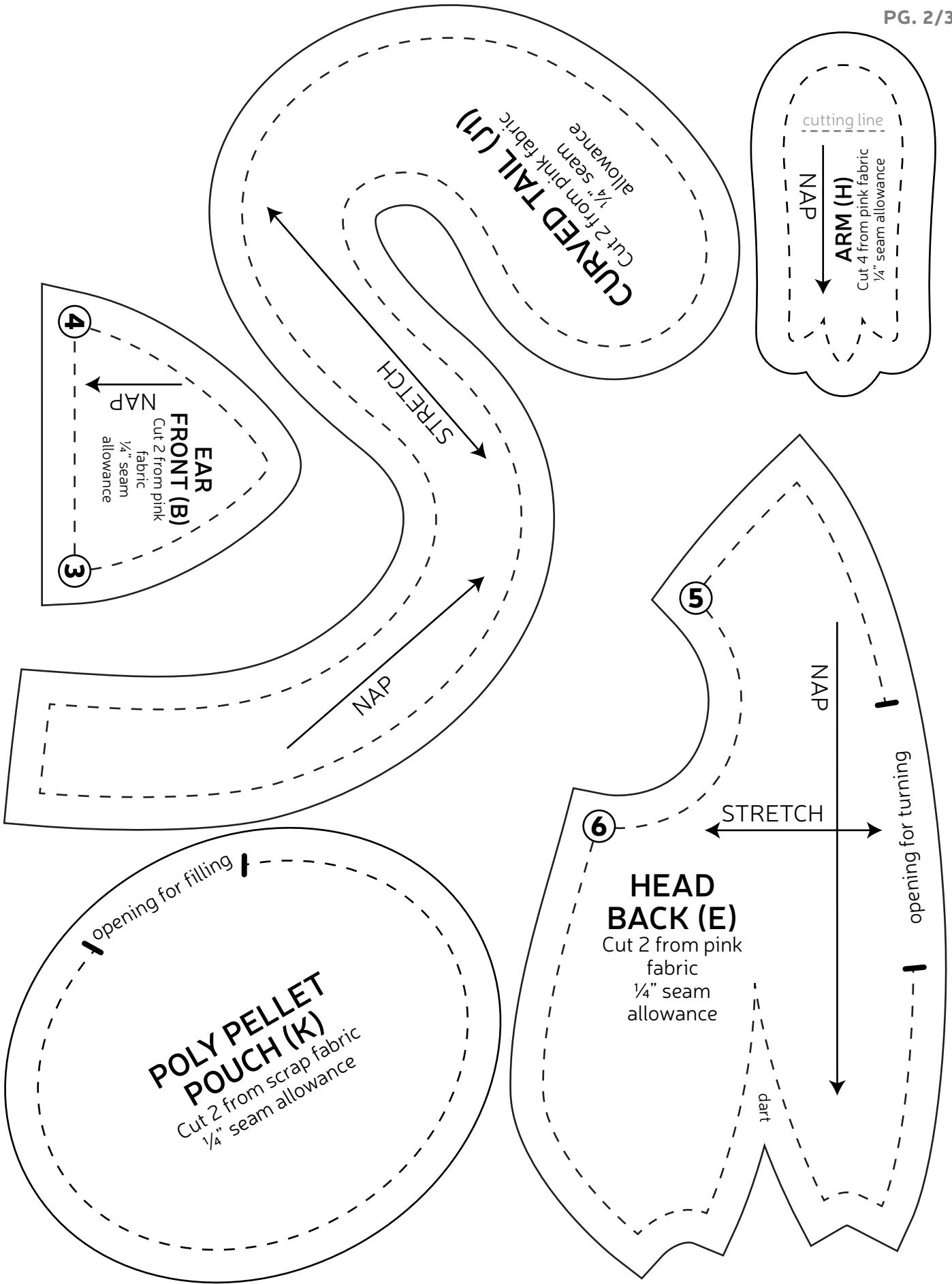
**sew desu ne?**

| [WWW.CHOLYKNIGHT.COM](http://WWW.CHOLYKNIGHT.COM) |

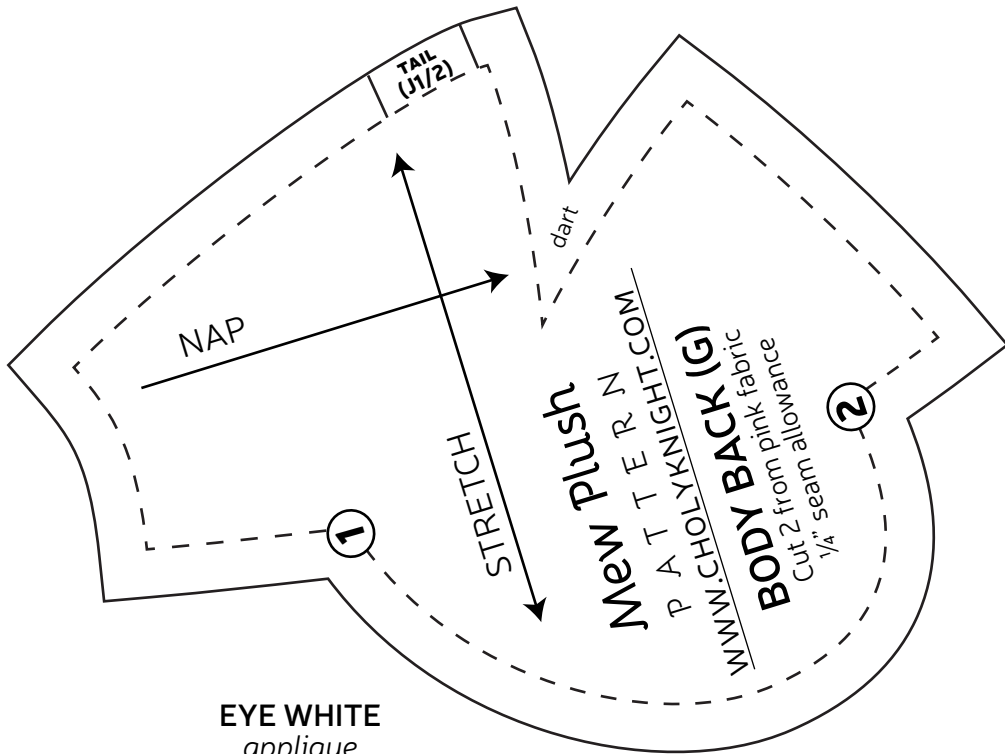
# TEST SQUARE 2"

measure this square to  
be sure you've printed  
at the proper  
proportions

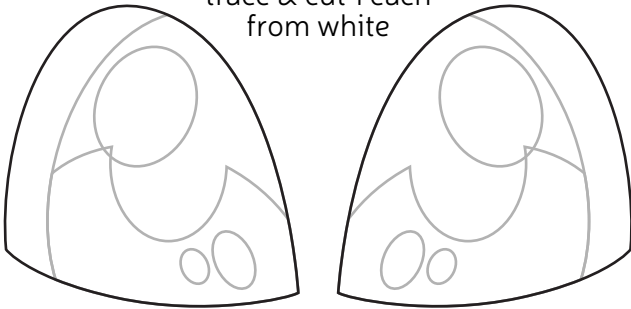




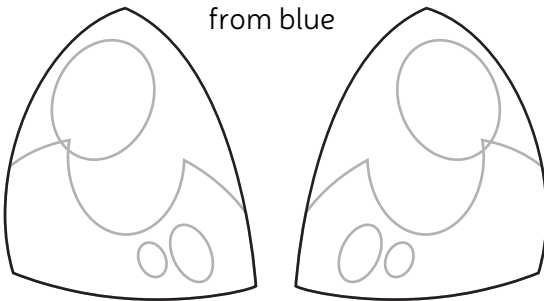




**EYE WHITE**  
*aplique*  
 trace & cut 1 each  
 from white



**IRISES**  
*aplique*  
 trace & cut 1 each  
 from blue



**EYE SHINES**  
*aplique*  
 trace & cut 2  
 each from white



**EYE HIGHLIGHTS**  
*aplique*  
 trace & cut 1 each  
 from light blue

