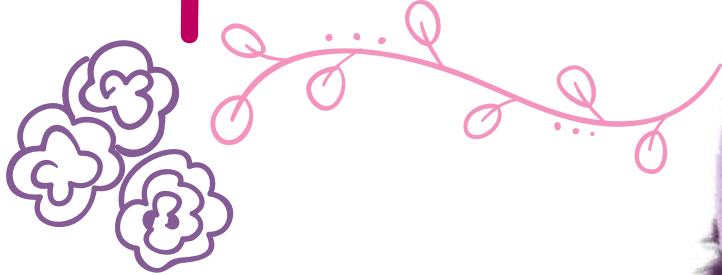


# alpaca plush



A FREE SEWING PATTERN BY



# alpaca plush

Ready your fluffiest fabrics because these huggable alpacas will show off your collection in the cutest way!

They have sweet little faces with tiny muzzles and hearts in their eyes.

You can make yours with sweet down-turned ears or up-turned ears for a more perky look.

And you also have the option of sewing the legs in seam for a faster finish, or adding them by hand for an alpaca that stands on its own.

## SKILLS USED:

- Sewing with fur
- Fusible web applique
- Curved sewing
- Basting
- Darts, double-ended darts
- Ladder stitch
- Gathering, gathering stitch

## DIFFICULTY:



If you're not used to working with fur fabrics, this project will pose some challenges. But overall the plush has simple shapes that serve as a good learning tool.

The hardest part of this plush is likely the precision needed for attaching the tail or sewing the muzzle, since those areas are a little small. Work these areas very slowly if they're new territory for you.

The body might also be challenging to those not used to curved sewing.

## MAKES:

One plush: about 7" tall (not including legs and ears), 5" wide, and 6" long



sew desu ne?

| [WWW.CHOLYKNIGHT.COM](http://WWW.CHOLYKNIGHT.COM) |



## materials & tools:

- ¼ yd. of fur fabric for main body
- 1/8 yd. of smooth fabric for muzzle & legs
- 3" x 3" piece of black applique fabric (such as cotton, felt, or flannel) for pupils
- 2" x 2" piece of white applique fabric for eye shines
- 2" x 2" piece of accent applique fabric for eye hearts
- 7" x 5" piece of scrap fabric for bean pouch
- poly pellets, rice, or beans for weight
- sewing thread to match main fabric and applique fabrics
- poly-fil stuffing
- basic sewing tools (sewing machine, scissors, iron, needles, pins, fabric marker, seam ripper)



## SUGGESTED FABRICS:

### faux fur

Fluffy faux fur will really help set your animal apart and make your alpaca look more like the real deal. Smooth fabrics like minky or variations of fleece can be used for the muzzle and legs. It's really that contrast between smooth and fluffy that will help make your alpaca look true to form and less 'naked'.

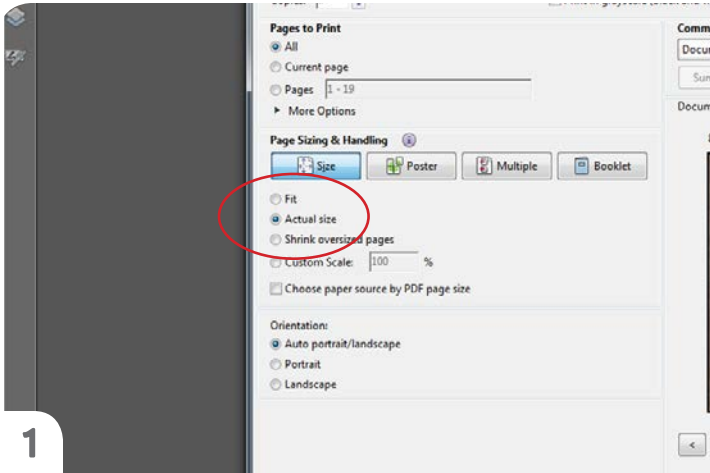
The samples were made using **SHANNON MINKY LUXE CUDDLE** in the *galaxy* and *sherpa* varieties. *Cuddle rose* was also used in testing. A **10MM PILE** is a good fur length to strive for, though longer fur would look great if the pattern is enlarged.

sew desu ne?

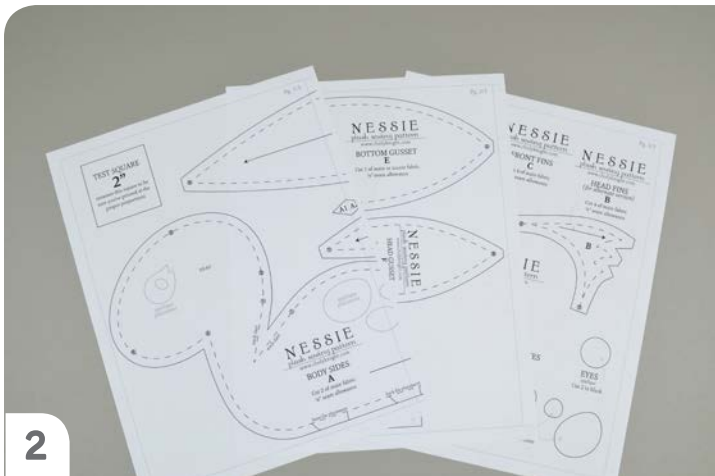
| [WWW.CHOLYKNIGHT.COM](http://WWW.CHOLYKNIGHT.COM) |

## printing the pattern:

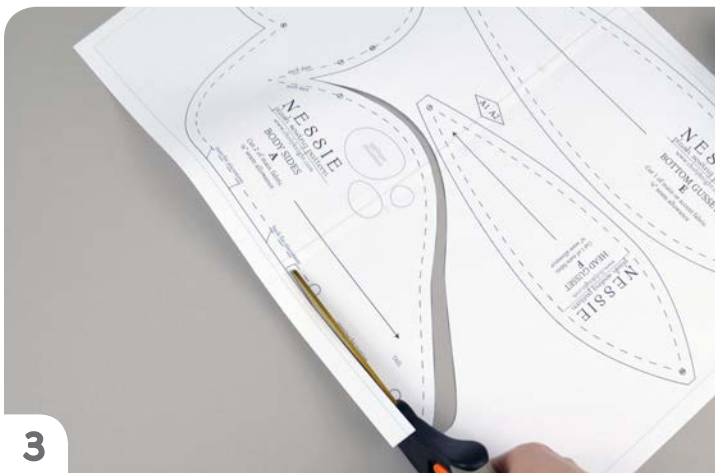
To print the pattern, set your computer to print **PAGES 18-19**. If you're unfamiliar with printing and assembling a .pdf pattern, read the steps below.



At the print dialog box, check the box that says print at “Actual Size” or 100%. Any other selection (such as “Fit to page”) will distort the pattern so it's slightly larger or smaller and we don't want that.



Print the pages needed for the file. You might have one or more. Either way, be sure you have the full collection by noting the page numbers in the corner.



You can trace the patterns onto a different paper, or you can also just cut them straight from the printer paper. They might be a little hard to pin through, so you might want to use your longest pins. But you could also use pattern weights or trace the outlines onto the fabric with a washable marker and cut them out from there.

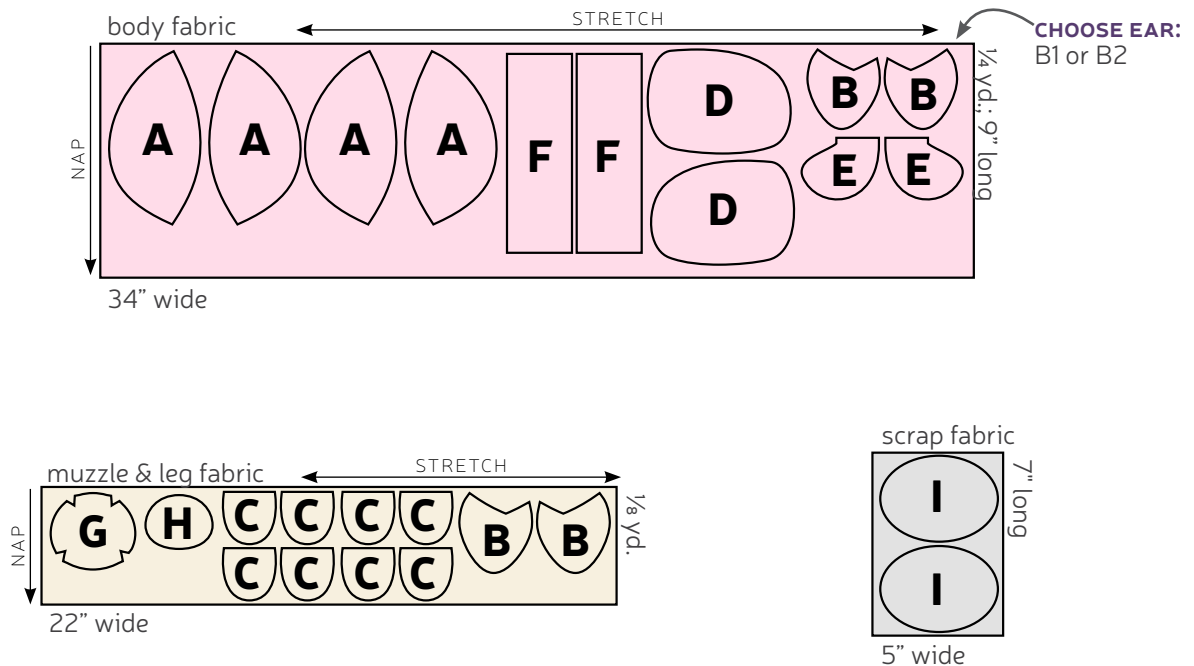
sew desu ne?

| [WWW.CHOLYKNIGHT.COM](http://WWW.CHOLYKNIGHT.COM) |

## cutting the fabric:



## cutting layout:



## BEFORE YOU BEGIN:

- Briefly read the project instructions so you know what to expect.
- If desired, mark the cut fabric pieces with the markings and symbols from the pattern. Or wait until the applicable step before transferring.
- Note that the seam allowance used is 1/4" throughout the project.

sew desu ne?

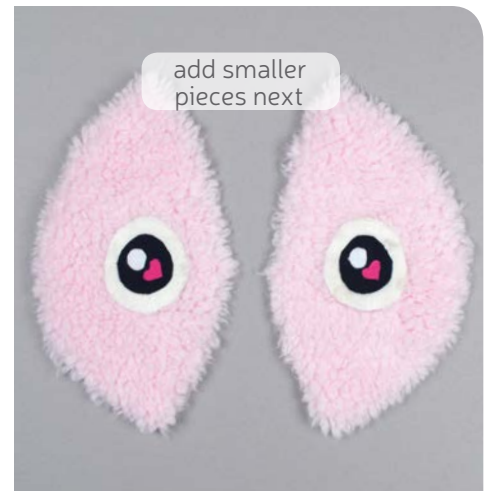
| [WWW.CHOLYKNIGHT.COM](http://WWW.CHOLYKNIGHT.COM) |





## 1. PREPARE THE FACE APPLIQUE

- Take your fusible web and trace all of your applique pieces onto the smooth (paper) side. You should have two eye bases, two pupils, two eye shines, and two eye hearts (optional).
- Fuse the bumpy (adhesive) side onto the wrong side of your applique fabric. The eye base should go onto the muzzle fabric, the pupils on black, the eye shines on white, and the hearts on an accent color.
- Cut out the eyes and arrange them on the **HEAD (A)** piece. Set your paper pattern on top of the fabric piece (right sides up). Align the eye base piece on top where the placement markings are. Then carefully pull the paper pattern away while holding the applique piece in place.



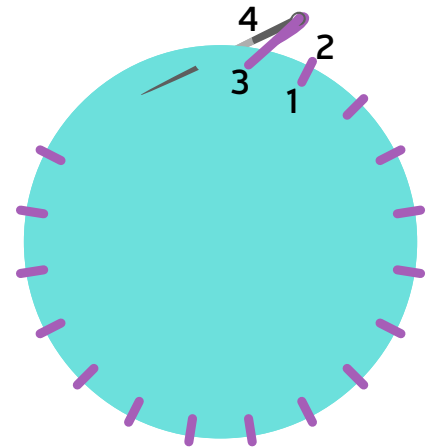
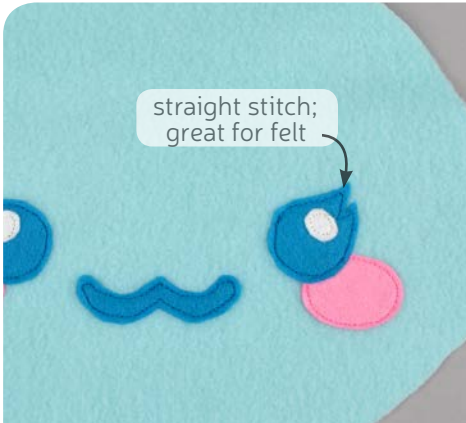
## 2. FUSE THE APPLIQUE

- Fuse the eye base pieces in place with your iron.
- Use just the tip of your iron to avoid ironing the fur too much so it goes flat.
- Next, move onto the smaller eye and eye shine pieces. Fuse them much the same way as you did the eye bases, using the paper pattern and photos as a guide.  
If you used heavy duty fusible web, you can keep the pieces fused without sewing, or you can sew them in place a number of ways. I've used a zigzag stitch here.

→ Refer to the next step for some other applique options.

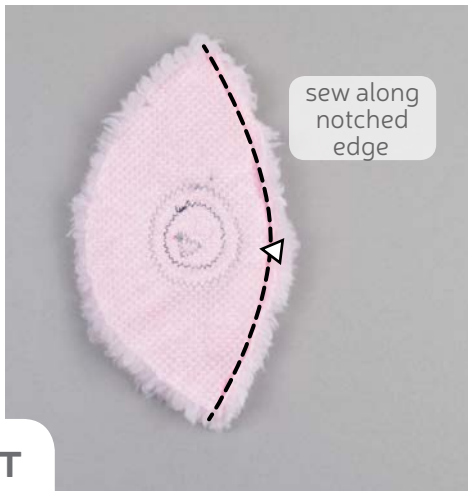
sew desu ne?

| WWW.CHOLYKNIGHT.COM |



## 2a. OTHER APPLIQUE OPTIONS

- Other good options for applique include a straight stitch, which involves sewing around the edge of the applique pieces with a straight stitch using matching thread -- about 1/8" in from the edge.
- You can also applique by hand; I prefer a whipstitch. Thread a hand-sewing needle with some matching thread and knot it. Bring the thread up from the back of the project; about 1/8" in from the edge of the applique shape. Bring it down perpendicular from the curve, just outside of the applique shape. This completes one stitch.
- For the next stitch, bring the needle back up about 1/8" away from the previous stitch and 1/8" in from the edge just as in the first stitch. Once again, bring it down just outside the applique shape. Continue this way until you've sewn around the shape.

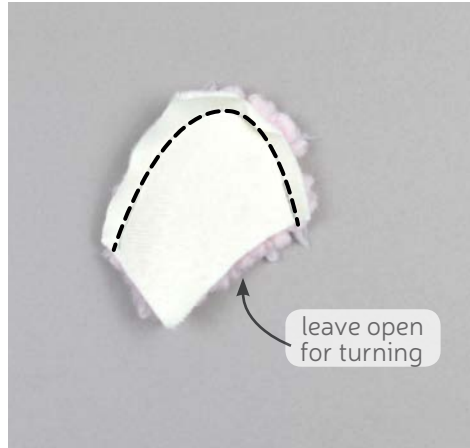


## 3. SEW THE HEAD FRONT

- Grab all of your **HEAD** pieces (A). Take the two with the eyes attached and align them so right sides are facing and raw edges matching up.
- If you haven't already, note the **notches** found on the edge of the head paper pattern. Sew the fabrics along this **notched** edge only.
- Open up the pieces when complete. This is the front of your head. Repeat this step with the remaining two (blank) head pieces. This is now your head back.

sew desu ne?

| [WWW.CHOLYKNIGHT.COM](http://WWW.CHOLYKNIGHT.COM) |



## 4. SEW THE EARS

- Grab your **EAR** pieces (B1/2). Take one from inner ear fabric and one from outer ear fabric. Line them up with right sides facing and raw edges aligning.
- Sew the ears together along the long curved edge. Leave the straight edges free for turning the ear.
- Turn the ear right side out and repeat with the remaining ear pieces for two complete ears.

### basting:

A form of temporary sewing meant to hold pieces in place. A long stitch length is often used for this reason. The finished result is not meant to be seen and sometimes is even removed later (depending on your project).

- Take one of your finished **EARS** and fold it with inner ear fabrics facing. Refer to the **fold line** found on the paper pattern as a guide. The straight edges of the ear should line up.
- Baste the open edge of the ear to hold it for future steps. Repeat with the other ear for a mirrored pair.
- If you haven't already, locate the **ear placement line** found on the **HEAD (A)** paper pattern. Transfer it over to the right side of the fabric. Align the fold of the ear along that line (higher up for the **UP-TURNED EAR B1**, lower for the **DOWN-TURNED EAR B2**).
- Flip the ears inward so the inner ear fabric is down. Line up the edge of the ear with the head. Baste the ear to the head within the seam allowance.

## 5. BASTE THE EARS

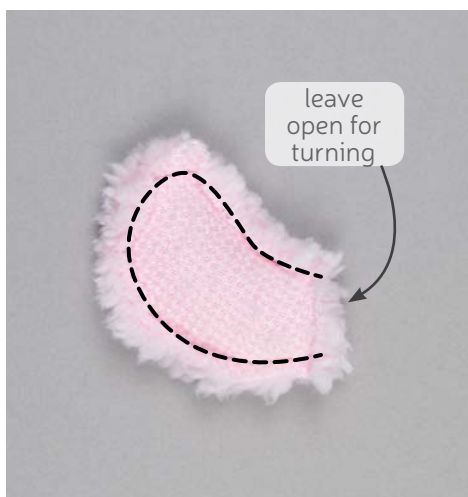


sew desu ne?

| WWW.CHOLYKNIGHT.COM |



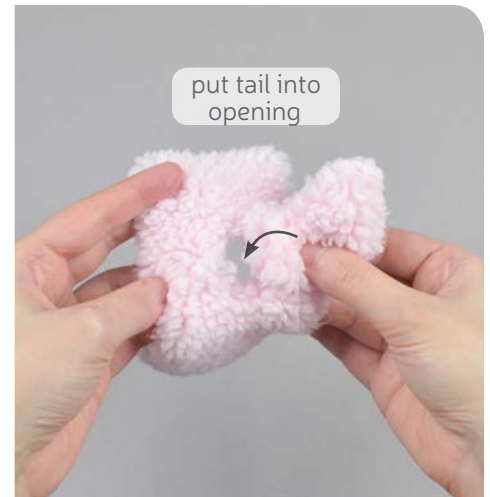
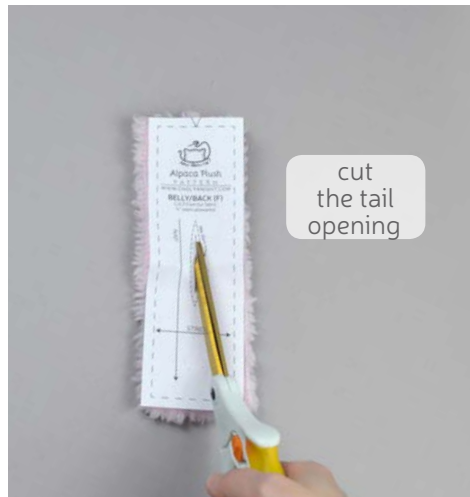
- a. Grab your head back pieces from before. Take it and align it over the head front you have so far. Line up the seams at the top and bottom that you sewed back in step 3.
- b. If you haven't already, locate the **opening for turning markings** found on the paper pattern for the **HEAD**. Transfer them over to the wrong side of the fabric. Sew around the perimeter of the head, but leave an opening at the bottom where you marked.
- c. Turn the head right side out through the opening.
- d. Stuff the head through the bottom opening so it takes on a nice round shape. Make sure to get it in all the corners and edges. Set aside the head for later.



- a. Grab your **TAIL** pieces (E). Align them both with right sides facing and raw edges matching up.
- b. Sew the tail pieces together around the long curved edge. Leave the short straight edge free for turning the tail right side out later.
- c. Turn the tail right side out through the opening.

sew desu ne?

| [WWW.CHOLYKNIGHT.COM](http://WWW.CHOLYKNIGHT.COM) |



## 8. PREP THE TAIL

- Stuff the **TAIL** lightly with stuffing. Keep the end empty as we'll be sewing it to the back next.
- Grab one of your **BELLY/BACK** pieces (F). Cut the **tail opening** from just one of the pieces -- this is marked on the paper pattern. Align the paper over the fabric and use it as a guide, cutting through both layers. This is now your **BACK** piece (the other piece without the cut is for the **BELLY**).
- Hold the back piece so the right side is facing up and open up the **tail opening**. Place the raw end of the tail into the opening so the tip points upward towards the **notch** found on the back pattern.

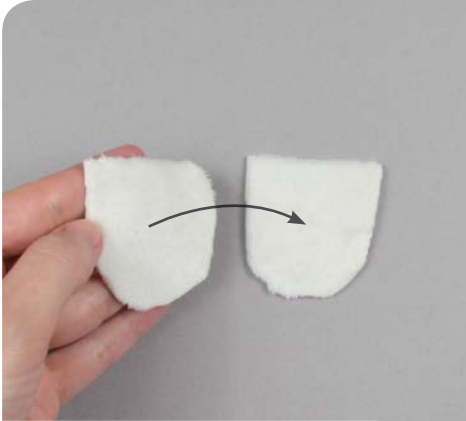


## 9. ATTACH THE TAIL

- Align the raw edges of the **tail opening** and the **TAIL** so the tail is fully inside the cut you've made. Secure the tail inside by sewing along the **stitching guidelines** found on the paper pattern. Start at the fold and curve out to sew over the tail, then curve back into the fold again at the end.
- When complete, the tail should be fully secured inside the **BACK** piece. Double check the base of the tail to be sure it's completely secure.
- Take your **BELLY** piece (F) and align it over the **BACK** with right sides facing and **notches** matching on the short end.
- Sew the belly to the back along the short edges.

sew desu ne?

| [WWW.CHOLYKNIGHT.COM](http://WWW.CHOLYKNIGHT.COM) |



## 10. SEW THE LEGS

- Grab your **LEG** pieces (C). Take two and align them with right sides facing and raw edges aligning.
- Sew them together along the curved edge. Leave the short edge free for turning the leg later. Turn the leg right side out and repeat with the remaining leg pieces for 4 complete legs total.
- Stuff each leg lightly with stuffing.



### IN-SEAM FLAT LEGS

For legs sewn in the seam (and a faster project overall), follow the step below.

For a plush that can stand on its own (but requires more hand-sewing), set the legs aside and skip ahead to step 12.



## 11. BASTE THE LEGS

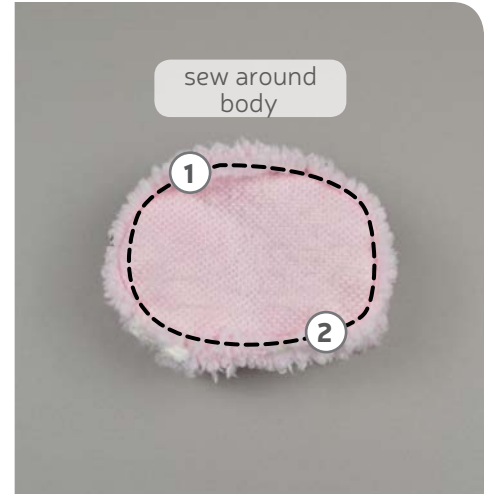


- If you haven't already, locate the **leg placement lines** found on the paper pattern for the **BODY** (D). Transfer them over to the right side of the fabric. Align the open end of the legs within these **placement lines** so the raw edges match up.
- Baste the legs to the body within the seam allowance to hold them securely and accurately for future steps. Repeat with the remaining two leg pieces on the other body piece.

sew desu ne?

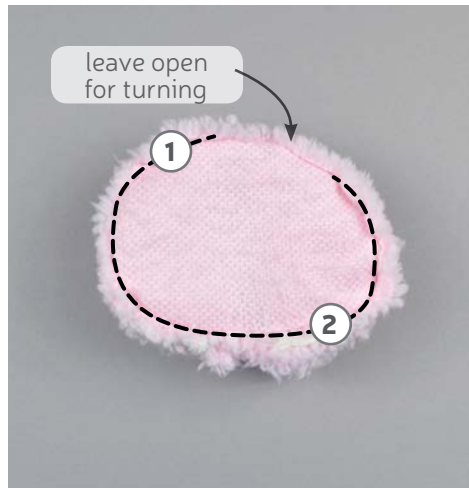
| [WWW.CHOLYKNIGHT.COM](http://WWW.CHOLYKNIGHT.COM) |





## 12. SEW THE BELLY/BACK TO THE BODY

- Grab your **BELLY/BACK** piece so far. It should make a ring with the **TAIL** secured in the middle. Also grab your **BODY** piece so far. The belly/back ring will be sewn around the body next. The paper pattern has **placement numbers** to ensure everything ends up in the right spot.
- Match up **point 1** of the **BELLY/BACK** to **point 1** on the **BODY** (near the neck area). Next, match up **point 2** of the belly/back to **point 2** of the body (near the back legs). Pin all the edges in between these points.
- Sew the belly/back to the body all around the edge.

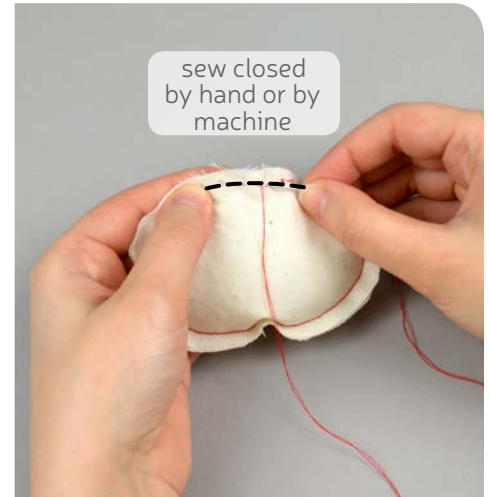
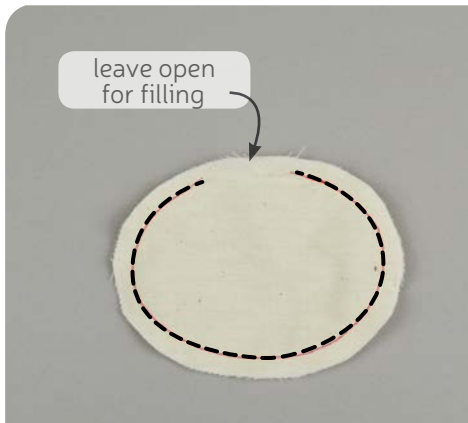


## 13. FINISH THE BODY

- Grab your remaining **BODY** piece. Repeat step 12 aligning the **points** of the **BELLY/BACK** to the body to ensure everything is lined up and pinned properly.
- If you haven't already, locate the **opening for turning markings** found on the paper pattern for the body. Transfer them over to the wrong side of the fabric. Sew the belly/back to the body all the way around as you did in the previous step, but leave the opening for turning that you marked.
- Turn the body right side out when complete.

sew desu ne?

| WWW.CHOLYKNIGHT.COM |



## 14. SEW THE BEAN POUCH

- Grab your **BEAN POUCH** pieces (I) from your scrap fabric. Align the two pieces together with either side facing (doesn't matter). Sew the pieces together around the edge, leaving a 1-2" opening (also marked on the paper pattern) for filling the pouch.
- Get your poly pellets and a funnel (I prefer a spoon, but both work). Fill the pouch with poly pellets until it's not quite full.
- Stitch the pouch closed by hand using a back stitch for extra safety, or take it to your machine. Stitch it closed very slowly, using only the hand wheel if necessary. Sewing over a pellet will very likely break a needle.

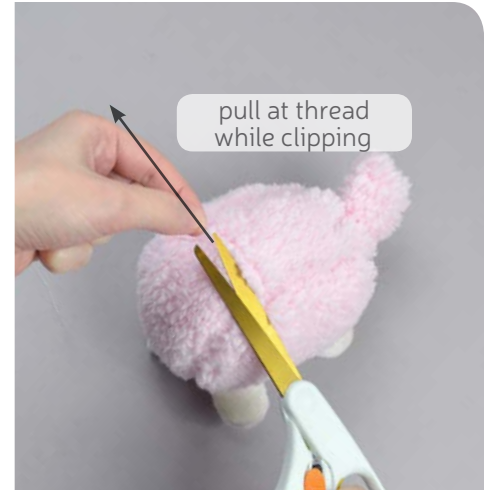


## 15. STUFF THE BODY

- Take your finished **BEAN POUCH** and place it in the **BODY** of your alpaca. Rest it flat near the tail end of the body.
- Stuff the rest of the body with stuffing until it looks full and round.
- Once the plush is stuffed, make sure the seam allowances in the head opening are tucked inside and prepare to ladder stitch it closed. Thread a hand-sewing needle and knot it at the end. Insert the needle from the inside of the opening and out of the plush near one edge of the opening. This will leave the knot inside the plush.

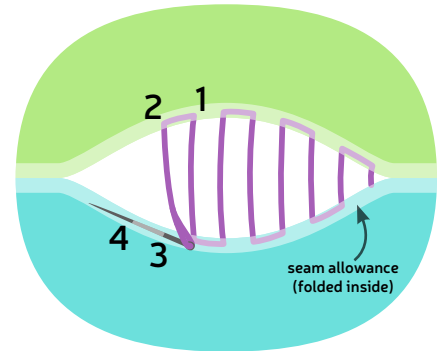
sew desu ne?

| [WWW.CHOLYKNIGHT.COM](http://WWW.CHOLYKNIGHT.COM) |



## 16. SEW THE BODY CLOSED

- Continue from here doing a ladder stitch. Take a 1/8" stitch into the fold of one side of the opening, then go across and take another. Keep going down the opening until you reach the end.
- When you're finished, stitch a knot into the end of the seam. Then insert the needle near the finished knot and out of the plush about 1-2" away.
- Pull the thread through and hold it taut while snipping the thread. The excess thread should sink back inside the plush -- all hidden!



## 17. ATTACH THE HEAD

- Grab your finished **HEAD** from before and align it over the front end of the stuffed **BODY**. Make sure the face is pointing away from the **TAIL**. For best results, the opening of the head should completely cover the **BELLY/BACK** seam at **point 1**.
- Stitch the head to the body around the head opening using a ladder stitch. For best results, take big basting stitches at first just to get the placement right. Check it from all angles to be sure you like the result. Then go around again with tinier, neater stitches for a strong finish.

sew desu ne?

| WWW.CHOLYKNIGHT.COM |



applique mouth  
to muzzle



fold along dart  
points



blend  
seam into  
fold



## 18. SEW THE MUZZLE DARTS

- Grab your **MUZZLE** piece (G). Take this opportunity to applique the mouth onto it following the directions from steps 1-2.
- Note the tiny wedge shapes around the muzzle piece. These are **darts**. Fold the muzzle fabric along the point of one dart to match up the slanted lines.
- Sew the dart by starting at the opening and curving into the fold of the fabric.

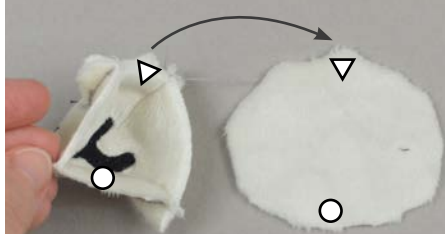
### darts:

A wedge-shaped gap found in a pattern. When sewn in fabric, it creates a tuck in the fabric and develops a 3D shape. The diagonal sides of the wedge are the **LEGS**; these are matched up and sewn to the **POINT** of the dart.

4 darts total



match up  
notches and circle

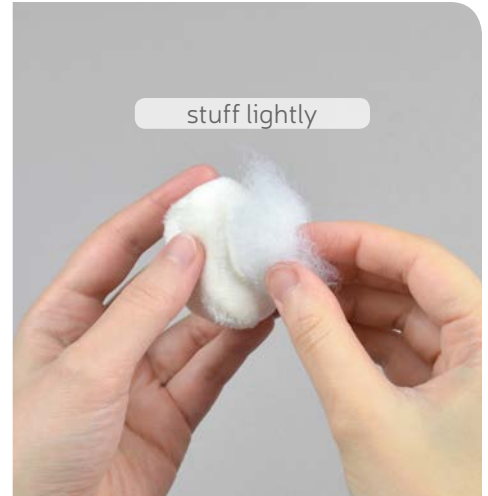


## 19. SEW THE MUZZLE

- Repeat step 18 with the remaining 3 darts found on the **MUZZLE**.
- Grab your **MUZZLE BACK** piece (H). Note the **notch** markings on both the **MUZZLE** and **MUZZLE BACK**. Match up the **notches** for these pieces with right sides facing. The **circle markings** will also match up. Pin the muzzle all the way around the shape.
- Sew the muzzle to the muzzle back all the way around

sew desu ne?

| WWW.CHOLYKNIGHT.COM |



## 20. STUFF THE MUZZLE

- To turn the muzzle right side out, cut a small slit into the center of the **MUZZLE BACK** (H). Be sure to cut through one layer of fabric only.
- Turn the muzzle right side out through the opening.
- Stuff the muzzle until it takes shape and no longer has any wrinkles in the fabric.

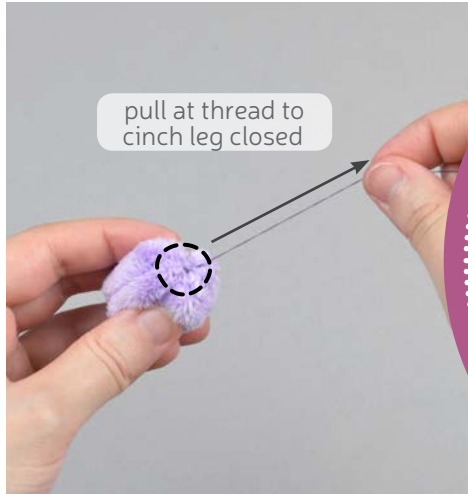


## 21. ATTACH THE MUZZLE

- Align the muzzle over the face of your alpaca. Place it with the cut side down just barely covering the corners of the eyes. Hold the muzzle in place by sticking pins down into the base of the muzzle and through the head of the alpaca.
- Stitch the muzzle to the face around the base using a ladder stitch.

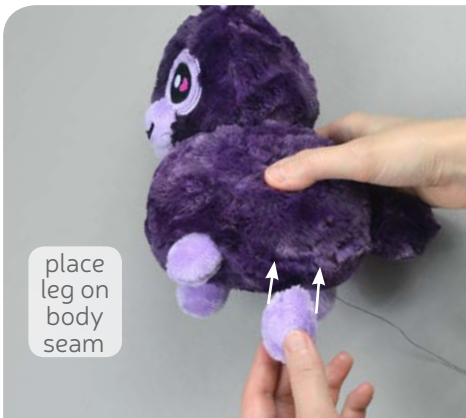
sew desu ne?

| [WWW.CHOLYKNIGHT.COM](http://WWW.CHOLYKNIGHT.COM) |



## 22. CINCH THE LEGS

- Grab your **LEG** pieces from before. Thread a hand sewing needle with thread and knot the end. Sew a long gathering stitch around the opening of the leg, about  $\frac{1}{4}$ " away from the edge.
- Once finished, pull at the thread to gather the fabric and cinch up the opening. Sew a few knots at this opening to hold it closed. If you have a lot of thread left, consider leaving it attached for adding to the body next.



## 23. ATTACH THE LEGS

- Place the **LEG** at one of four points on the bottom of the body. There should be two at the front and two at the back. Center them over the body seams (from back in step 12-13) about 1" in from each end of the body.
- Ladder stitch the leg to the body around the base. Repeat steps 22-23 with the remaining leg pieces so your alpaca has 4 legs.

### gathering:

The process of shortening the length of a piece of fabric by sewing long stitches through it. When the thread is pulled, it forms small folds that ruffle the fabric.

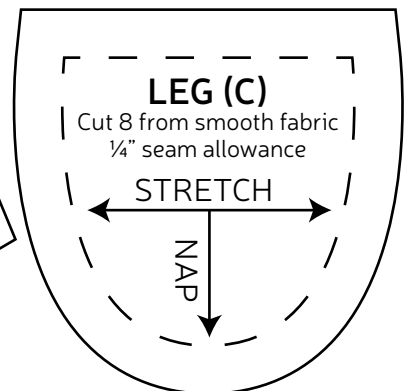
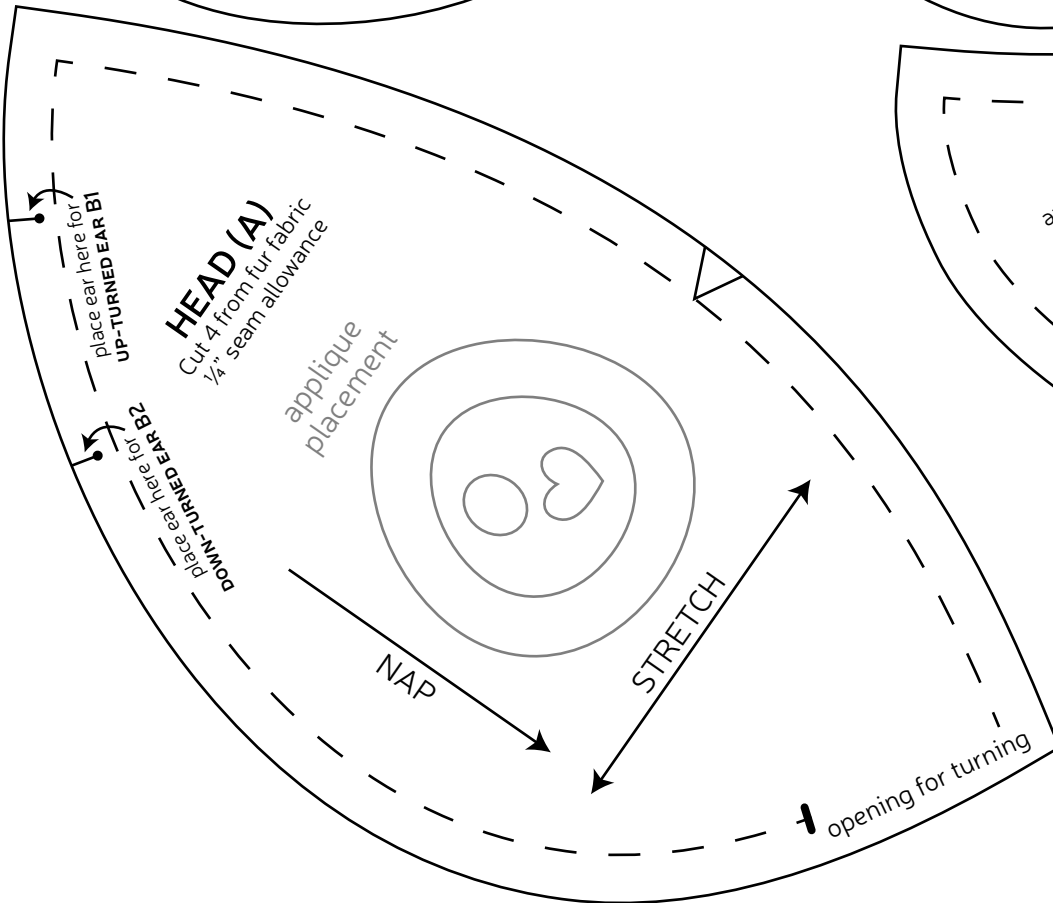
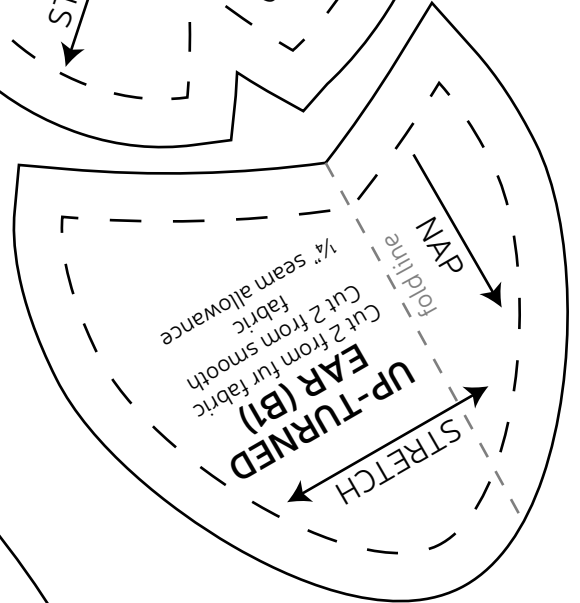
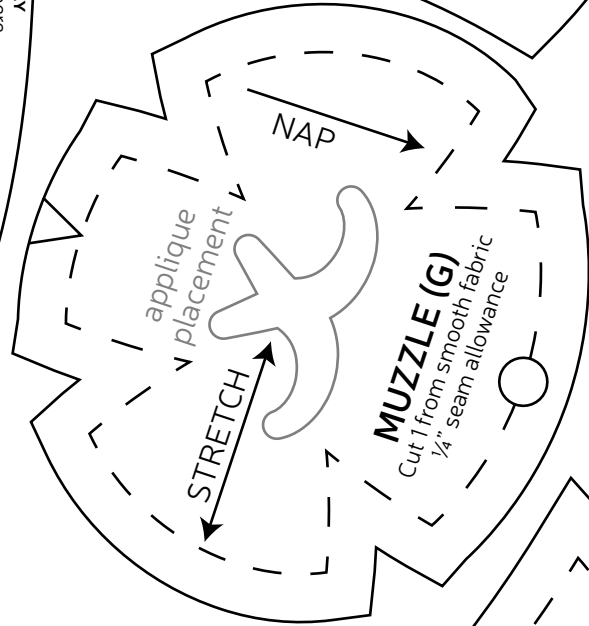
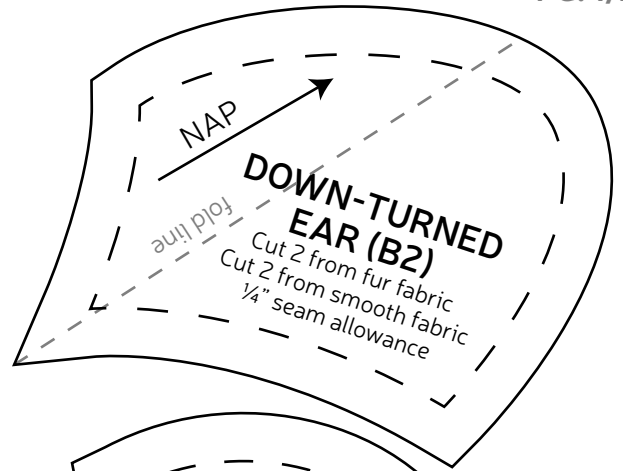
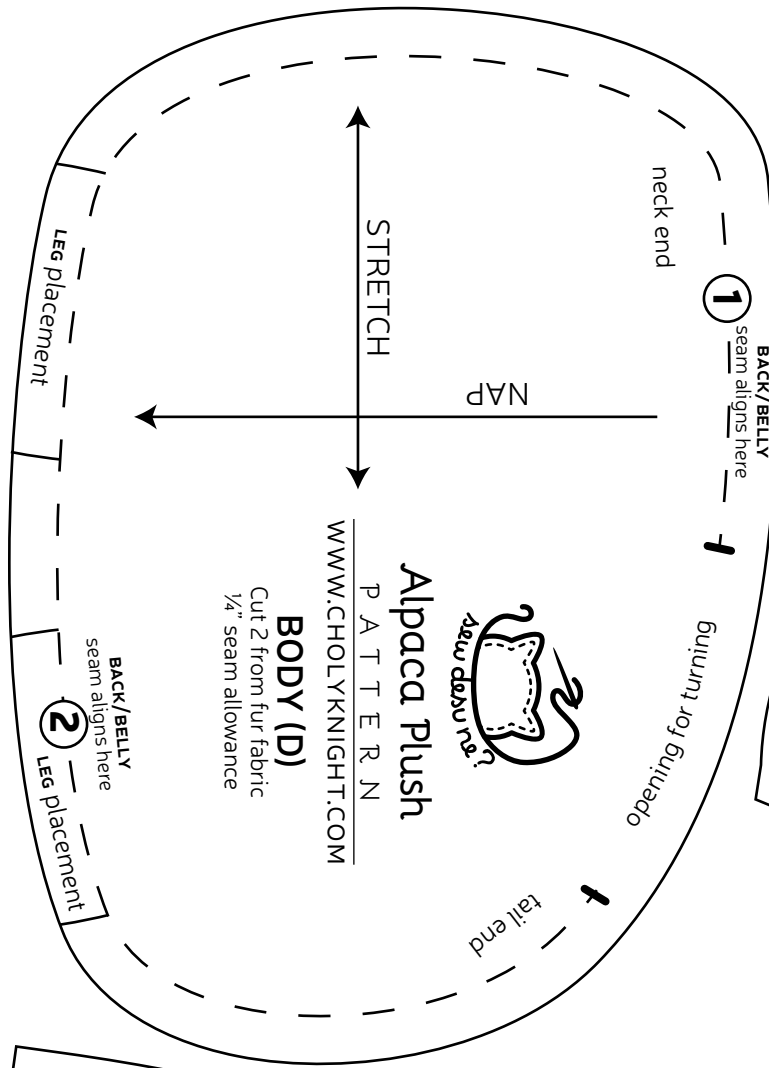
### gathering stitch:

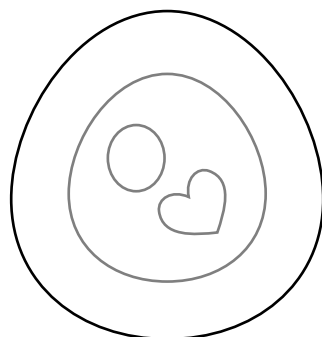
A long version of the running stitch, which is a stitch done by weaving the needle in and out of a length of fabric going along a line. The long stitches (about  $\frac{1}{4}$ "- $\frac{1}{2}$ " long) gather the fabric when pulled later.

**congrats!**  
this completes  
your plush! Now  
give it a big  
hug!









**EYE BASE**  
applique  
trace & cut  
2 of smooth fabric



**EYE**  
applique  
trace & cut  
2 of black



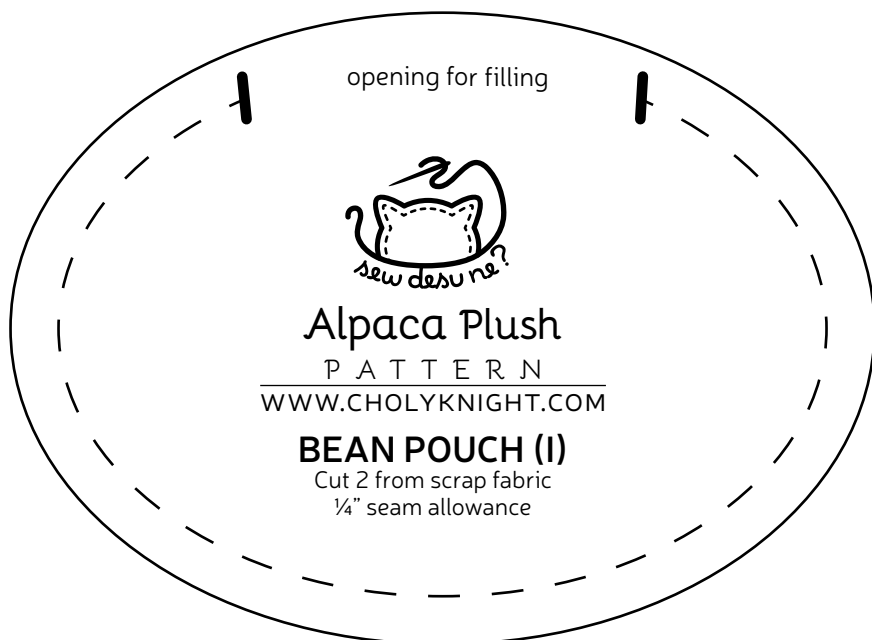
**EYE HIGHLIGHT**  
applique  
trace & cut  
2 of accent color



**MOUTH**  
applique  
trace & cut  
1 of black



**EYE SHINE**  
applique  
trace & cut  
2 of white



opening for filling

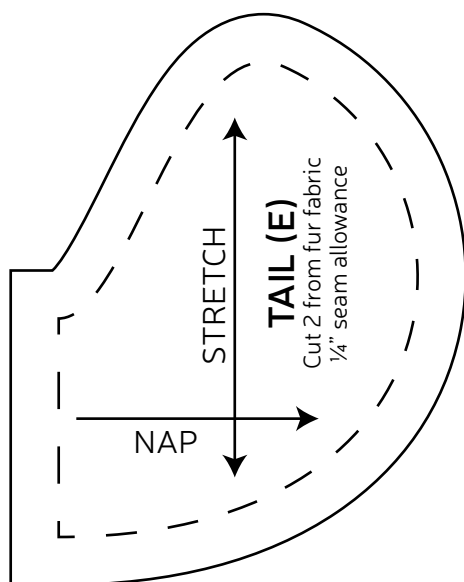
Alpaca Plush

PATTERN

WWW.CHOLYKNIGHT.COM

**BEAN POUCH (I)**

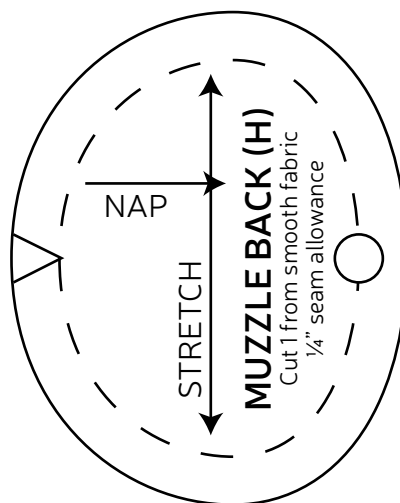
Cut 2 from scrap fabric  
1/4" seam allowance



STRETCH

TAIL (E)

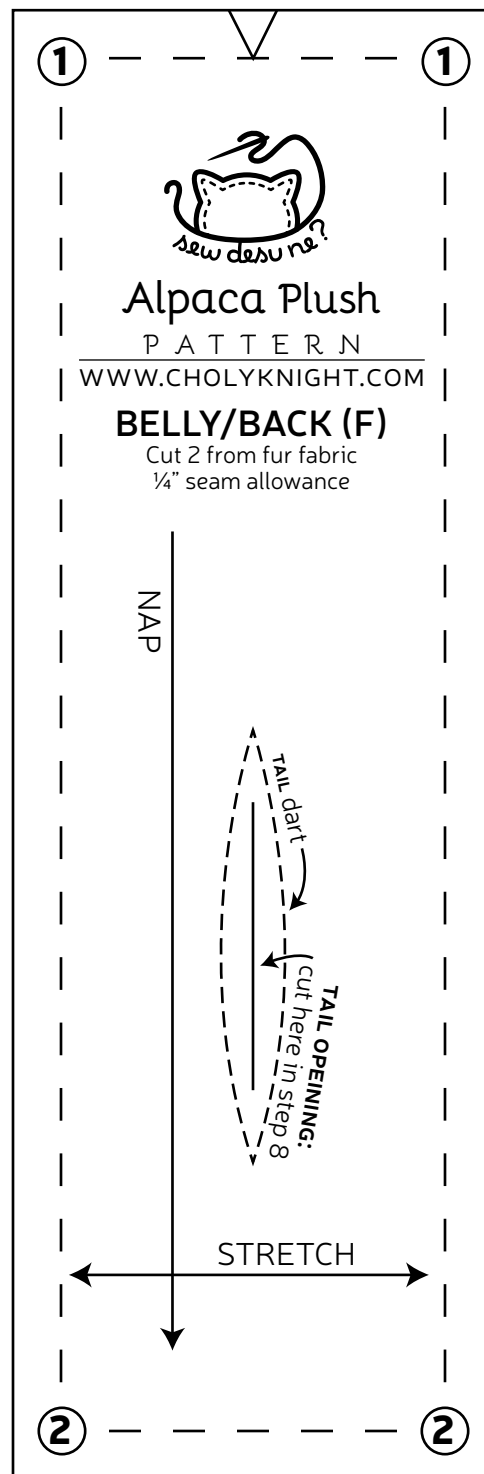
Cut 2 from fur fabric  
1/4" seam allowance



STRETCH

MUZZLE BACK (H)

Cut 1 from smooth fabric  
1/4" seam allowance



Alpaca Plush

PATTERN

WWW.CHOLYKNIGHT.COM

**BELLY/BACK (F)**

Cut 2 from fur fabric  
1/4" seam allowance

NAP

STRETCH

TAIL darts

TAIL OPENING:  
cut here in step 8