

# appa plush



A FREE SEWING PATTERN BY



# appa plush

Fans of *Avatar: The Last Airbender* or *Legend of Korra* should recognize this cuddly sky bison! Appa is the much-loved companion and transportation for Aang. This one is based loosely on the festival prize Korra wins in season 2, episode 1.

The original version prize size is huge, so for more manageable options, there is a medium and small size as well. The small size is specifically meant for embroiderers who have 4" x 4" hoops, so the medium size is highly recommended for the easiest time sewing. Appa looks great in longer pile faux fur -- which is especially helpful for his bangs that hang in front of his eyes. It is more difficult to sew however (and trickier to embroider), so a separate bangs piece is included which gives the same effect with smooth fabrics.

**FAUX FUR: SHANNON LUXE CUDDLE  
FROSTED SHAGGY IN SAND**



## MAKES:

**LARGE (FESTIVAL) SIZE:** 16" tall (from bottom of body to top of head), 10" wide (from each side of head), and 8" long (from nose to back of head)

**MEDIUM SIZE:** 8" tall, 5" wide, and 4" long

**SMALL SIZE:** 6" tall, 4" wide, and 3" long

## SKILLS USED:

- Fusible web applique
- Curved sewing
- Basting
- Darts
- Ladder stitch
- Top stitching
- Sewing small pieces
- Matching notches and points
- Gathering; gathering stitch

## DIFFICULTY:



The hardest part of this plush is definitely attaching all the legs, since there are so many. It's also difficult to sew them into the body since they take so much space. Be sure to look out for the alternative tips if this gives you too much trouble.



sew desu ne?

| [WWW.CHOLYKNIGHT.COM](http://WWW.CHOLYKNIGHT.COM) |

## materials & tools:

- sewing thread to match main fabric and applique fabrics
- poly-fil stuffing
- basic sewing tools (sewing machine, scissors, iron, needles, pins, fabric marker, seam ripper)

### LARGE SIZE

- 1 yd. of smooth cream fabric for main body (only 2/3 yd. needed if using fur fabric)
- 1/2 yd. of brown fabric for belly
- 1/4 yd. of dark gray fabric for horns and nose
- 1/4 yd. of medium gray fabric for muzzle
- 20" x 15" piece of brown fabric for body markings (fabric similar to your main body fabric is ideal)
- 6" x 3" of black applique fabric (flannel, felt, fleece, cotton, etc.) for eyes
- 3" x 3" of white applique fabric for eye shines
- 20" x 15" piece of light or heavy duty fusible web adhesive

### MEDIUM SIZE

- 1/4 yd. of cream fabric for main body
- 1/4 yd. of brown fabric for belly
- 1/8 yd. of dark gray fabric for horns and nose
- 1/8 yd. of medium gray fabric for muzzle
- 11" x 7" piece of brown fabric for body markings (fabric similar to your main body fabrics is ideal)
- 3" x 3" of black applique fabric (flannel, felt, fleece, cotton, etc.) for eyes
- 2" x 2" of white applique fabric for eye shines
- 11" x 7" piece of light or heavy duty fusible web adhesive

### SMALL SIZE

- 1/4 yd. of cream fabric for main body
- 1/8 yd. of brown fabric for belly
- 1/8 yd. of dark gray fabric for horns and nose
- 1/8 yd. of medium gray fabric for muzzle
- 8" x 5" piece of brown fabric for body markings (fabric similar to your main body fabrics is ideal)
- 2" x 2" of black applique fabric (flannel, felt, fleece, cotton, etc.) for eyes
- 2" x 2" of white applique fabric for eye shines
- 8" x 5" piece of light or heavy duty fusible web adhesive

## SUGGESTED FABRICS:



Plush, stretchy fabrics such as **FLEECE** or **MINKY** are suggested. The variations shown at the left are good names to look for. Longer pile **FAUX FUR** or **LUXE MINKY** would work well for Appa's shaggy appearance and would eliminate the need for bangs, but makes sewing & embroidering a little more difficult due to all the fluff.

Smoother fabrics like fleece can be used instead, though ideally stay away from very thick versions -- such as those meant for outdoor apparel. This will make the smaller details more difficult and the bangs will create too much bulk.

### 10MM LUXE MINKY VS. 3MM SMOOTH MINKY



sew desu ne?

| [WWW.CHOLYKNIGHT.COM](http://WWW.CHOLYKNIGHT.COM) |



# printing the pattern:

## LARGE SIZE TEMPLATES:

pg. 26-42

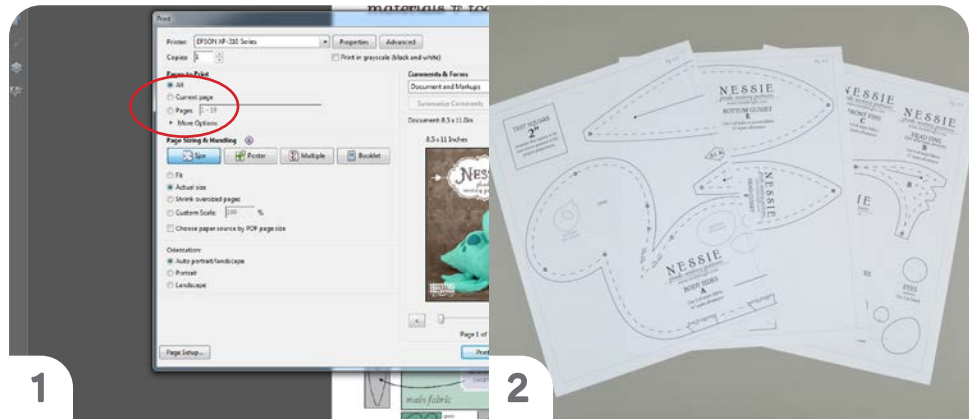
## MEDIUM SIZE TEMPLATES:

pg. 43-47

## SMALL SIZE TEMPLATES:

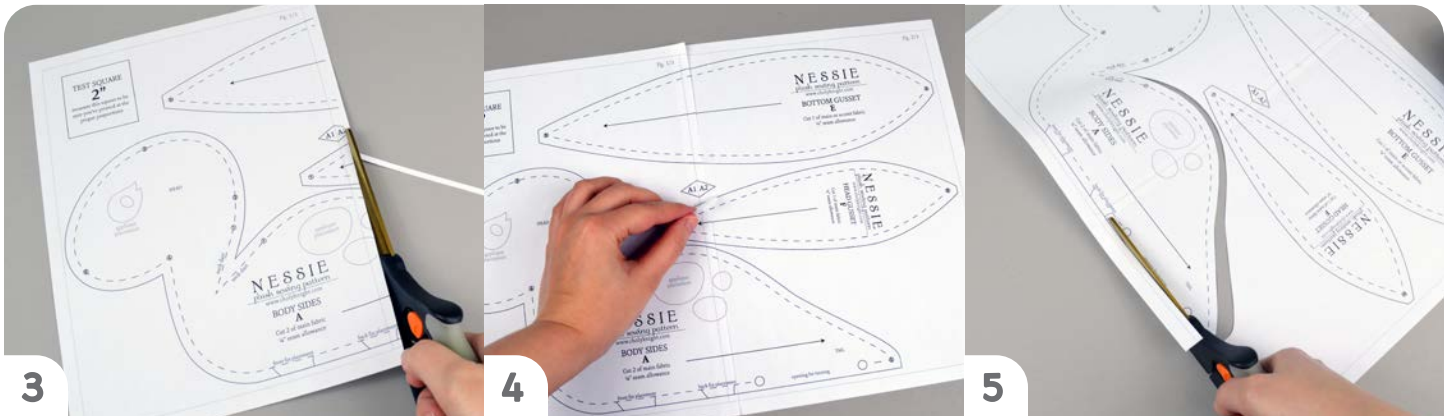
pg. 48-50

To print the pattern, set your computer to print the size you want, based on the page numbers shown above. If you're unfamiliar with printing and assembling a .pdf pattern, read the steps here.



At the print dialog box, check the box that says print at "Actual Size" or 100%. Any other selection (such as "Fit to page") will distort the pattern so it's slightly larger or smaller and we don't want that.

Print the pages needed for the file. You might have one or more. Either way, be sure you have the full collection by noting the page numbers in the corner.



It's likely your printer will have a margin that ensures your image doesn't print to the very edge. Assembly will be easier if you trim off this blank margin edge. This will give you pages that overlap slightly during assembly. If you trim across the gray outline boxes, this will give you pages that don't overlap but rather butt against each other.

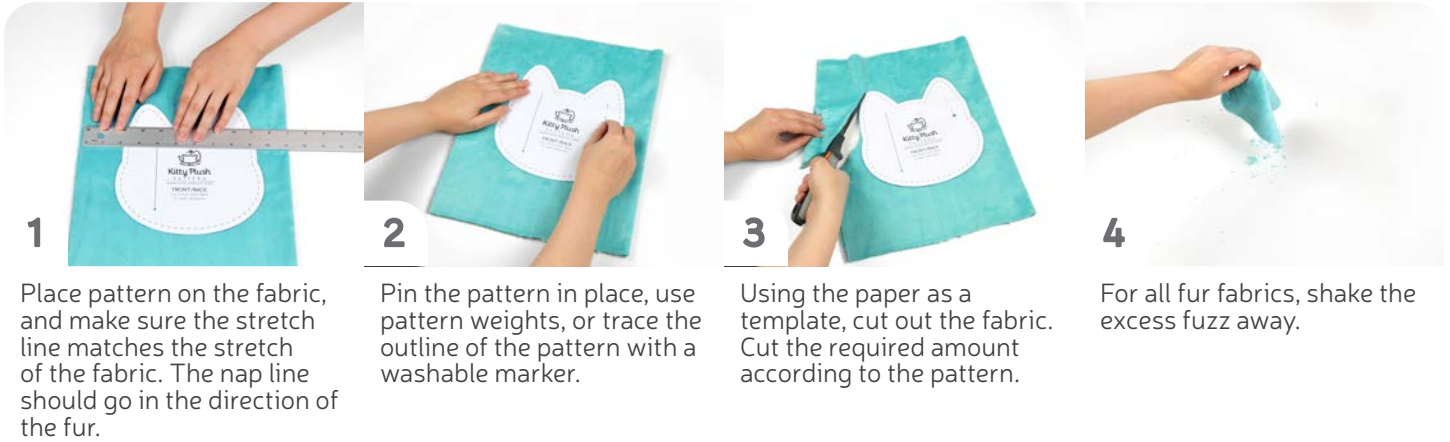
To line up the pattern pages, match up the corresponding diamond shapes. Each diamond will have a letter, so it's simply a matter of matching A1 to A2, B3 to B4 and so on. The faint gray lines indicate the border of every page, you should be able to line those up as well. When the diamond goes together, tape it in place. If you have many pages, it's easier to tape up the pages into rows first. Then tape the rows together into a full block.

You can trace the patterns onto a different paper, or you can also just cut them straight from the printer paper -- be sure that each piece is fully taped together along the joins so they don't fall apart when you cut them.

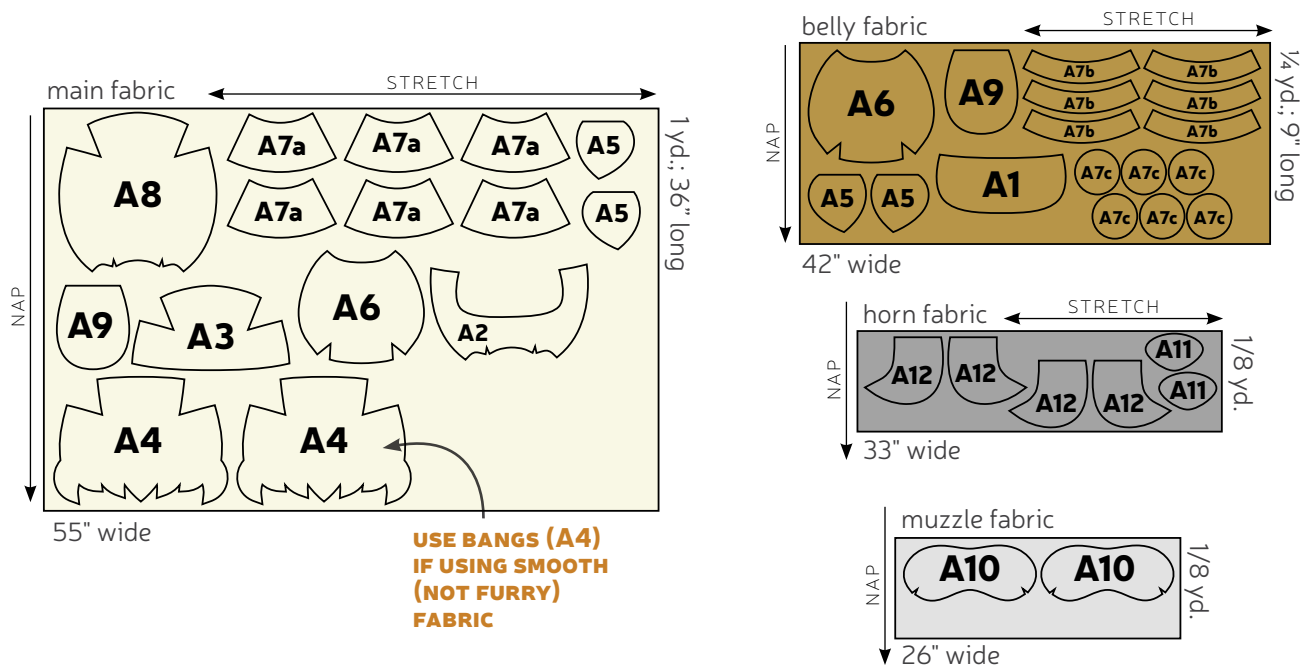
sew desu ne?

| WWW.CHOLYKNIGHT.COM |

## cutting the fabric:



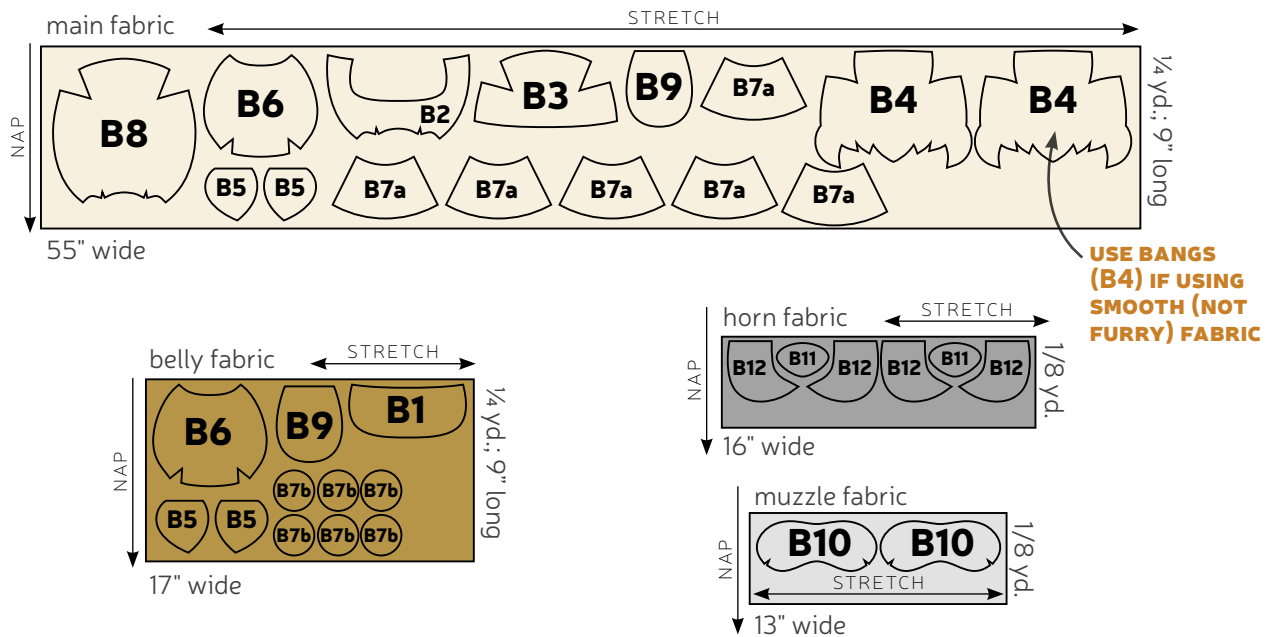
## cutting layout: large size (A pieces)



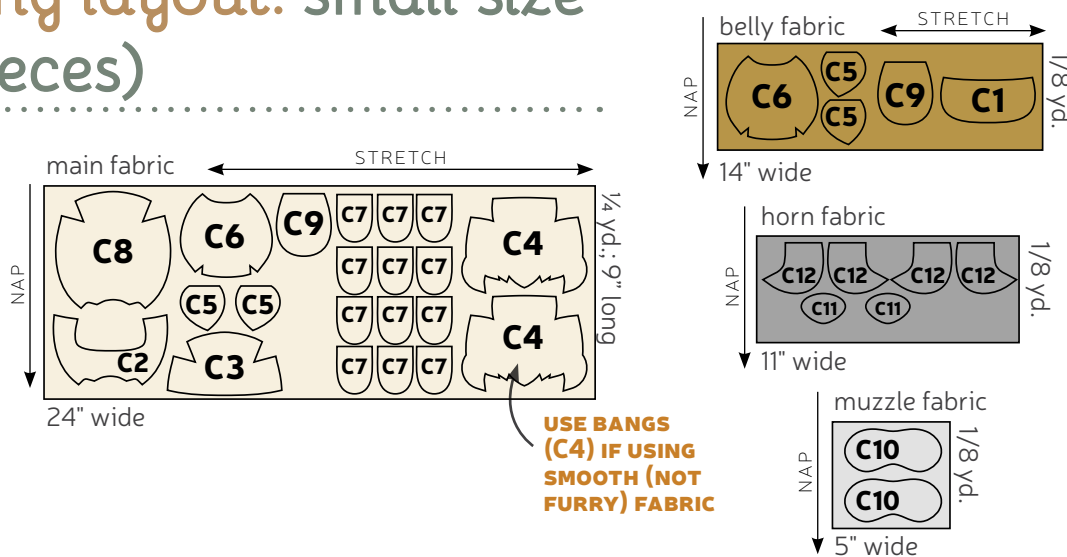
sew desu ne?

| [WWW.CHOLYKNIGHT.COM](http://WWW.CHOLYKNIGHT.COM) |

## cutting layout: medium size (B pieces)



## cutting layout: small size (C pieces)



### BEFORE YOU BEGIN:

- Briefly read the project instructions so you know what to expect.
- If desired, mark the cut fabric pieces with the markings and symbols from the pattern. Or wait until the applicable step before transferring.
- Note that the **LARGE** size has a **1/2" SEAM ALLOWANCE** (to make working with fur on a large scale easier). The **MEDIUM** and **SMALL** size has a **1/4" SEAM ALLOWANCE**.

sew desu ne?

| WWW.CHOLYKNIGHT.COM |



## 1. PREPARE THE FACE APPLIQUE

- Grab your fusible web and trace all the applique pieces onto the smooth (paper) side. You'll need two **eyes**, two **eye shines**, and all the **body stripes**.
- Fuse the bumpy (adhesive) side onto the wrong side of your applique fabric. The **eyes** should go on black, the **eye shines** on white, and the **stripes** on brown.
- Cut out the **eyes** and arrange them on the **EYE PANEL** (A1/B1/C1) piece. Set your paper pattern on top of the fabric piece (right sides up). Align the **eye** piece on top where the placement markings are. Then carefully pull the paper pattern away while holding the applique piece in place.



## 2. FUSE THE APPLIQUE

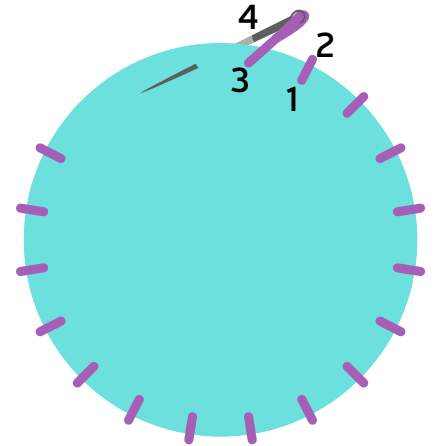
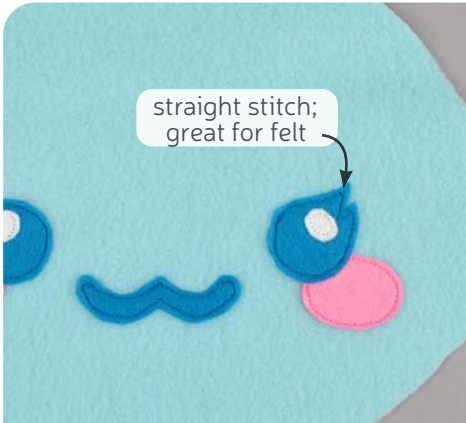
- Fuse the **eyes** in place with your iron. Use a press cloth if you're using a polyester or fuzzy fabric like minky. Next, move onto the smaller **eye shines**. Fuse them the same way as you did the **eyes**, using the paper pattern and photos as a guide.
- Repeat with the remaining **stripes** on the various body pieces. Fuse the **forehead arrow** onto the **FOREHEAD** (3) if using a fluffy fur fabric or on the **BANGS** (4) if using a smooth fabric. Also apply the stripes to the **BODY BACK** (6), **HEAD BACK** (8), and **TAIL** (9).
- If you used heavy duty fusible web, you can keep the pieces fused without sewing, or you can sew them in place a number of ways. I've used a zigzag stitch here.

→ Refer to the next step for some other applique options.

sew desu ne?

| WWW.CHOLYKNIGHT.COM |





## 2a. OTHER APPLIQUE OPTIONS

- Other good options for applique include a straight stitch, which involves sewing around the edge of the applique pieces with a straight stitch using matching thread -- about 1/8" in from the edge.
- You can also applique by hand; I prefer a whipstitch. Thread a hand-sewing needle with some matching thread and knot it. Bring the thread up from the back of the project; about 1/8" in from the edge of the applique shape. Bring it down perpendicular from the curve, just outside of the applique shape. This completes one stitch.
- For the next stitch, bring the needle back up about 1/8" away from the previous stitch and 1/8" in from the edge just as in the first stitch. Once again, bring it down just outside the applique shape. Continue this way until you've sewn around the shape.



## 3. ATTACH THE CHIN

- Grab your **EYE PANEL** (with the eyes attached), and your **CHIN** (2). These pieces will be attached next, along the edge with the **single notch** to help with alignment.
- Flip the chin piece over so right sides are facing, and bend the **notched edge** of the chin to fit around the eye panel. Match up the **notches** at the center and pin all the way up to the corners.
- Sew the chin to the eye panel along this **notched edge**.

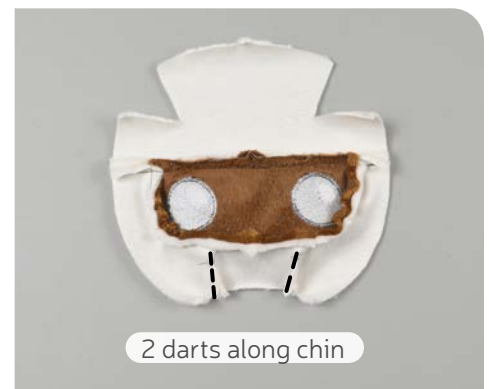
sew desu ne?

| [WWW.CHOLYKNIGHT.COM](http://WWW.CHOLYKNIGHT.COM) |



- a. Open up the pieces when complete, and they should look something like **PHOTO A**. If your piece isn't laying flat, you can give it a light press from the back with your iron.
- b. Next, grab your **FOREHEAD** piece (3). Align it over the top of the **EYE PANEL** so the **double-notches** are matching.
- c. Sew the forehead to the eye panel along the **double-notched edge**.
- d. Open up the pieces when complete, and your entire head front should look something like **PHOTO D**.

#### 4. ATTACH THE FOREHEAD



#### 5. SEW THE CHIN DARTS

- a. The **CHIN** (2) has 2 small **darts** along the bottom. These are the small wedges found along the neck edge. To sew them, start by folding the front piece in half along the point of the dart and match up the slanted lines. If you need extra help, you can also trace the seam line from the paper pattern.
- b. Sew the **bottom dart** by starting at the opening using the regular seam allowance and moving to the point. When sewing to the point, try to blend your seam into the fold of the fabric for a smooth transition and a rounder finished plush.
- c. Repeat with the other **dart** on the other side of the chin for two total.

#### DARTS:

A wedge-shaped gap found in a pattern. When sewn in fabric, it creates a tuck in the fabric and develops a 3D shape. The diagonal sides of the wedge are the **LEGS**; these are matched up and sewn to the **POINT** of the dart.

sew desu ne?

| WWW.CHOLYKNIGHT.COM |



## 6. SEW THE FOREHEAD DARTS

- Next, we're going to repeat the same process but with the darts on the **FOREHEAD** (3). Fold the piece along the point of the dart to match up the slanted lines.
- Sew from the opening of the dart down to the point, and blend your stitching into the fold as closely as possible.
- When complete, you should have two completed darts at the forehead, and two more at the chin.

**IF YOU'RE USING A FLUFFY FABRIC, YOUR APPA DOESN'T NEED THE BANGS (4), WHICH ARE SEWN NEXT. SKIP AHEAD TO STEP 11.**



## 7. SEW THE BANGS DARTS

- Grab your **BANGS** (4). Repeat the same process for the **darts** on the bangs as you did with the **FOREHEAD** (3). Fold the bangs along the point of the **dart** to match the slanted lines.
- Sew from the opening of the dart down to the point, and blend your stitching into the fold as closely as possible.
- Repeat on the other side of the bangs so you have two sewn darts total.

sew desu ne?

| [WWW.CHOLYKNIGHT.COM](http://WWW.CHOLYKNIGHT.COM) |



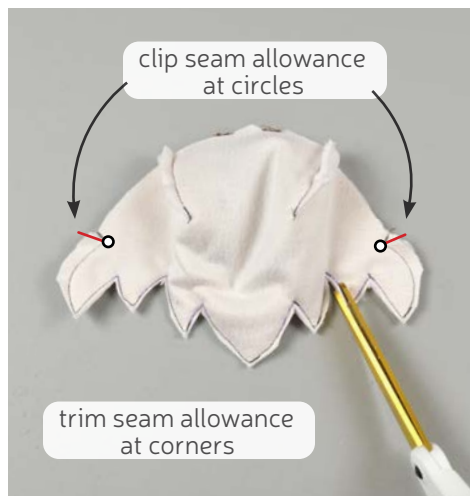
## 8. PREP THE BANGS



- Repeat step 7 with your other **BANGS** piece (4). You should have one with the arrow applique and one without. Both pieces should have the darts sewn so they make a dome shape.
- Align your two bangs pieces with right sides facing and the jagged edges matching up.
- These jagged seams are a little detailed (especially the inner corners). To sew them accurately, transfer the seam lines from the paper pattern. Trim away the seam allowance and use it as a tracing guide onto the wrong side of the fabric.



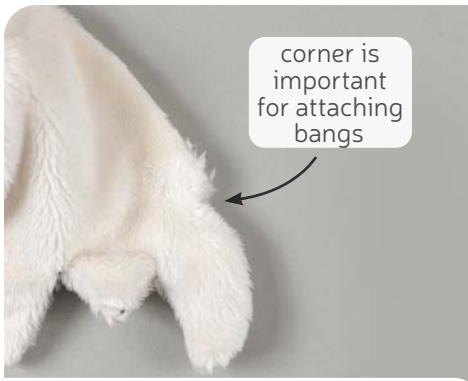
## 9. SEW THE BANGS



- If you haven't already, note the **circle markings** on the paper pattern for the **BANGS** (4). Sew the bangs together by starting on the outside edge and sewing in towards the **circle marking**. Then pivot and sew around the jagged edge. Stop at the other **circle marking**, pivot, and sew off the edge.
- Trim the excess seam allowance around the corners of the edge you've just sewn. This will help reduce bulk and increase flexibility when the piece is turned next. Also be sure to clip into the corners where you pivoted at the **circle marking**.
- Turn the bangs right side out through the opening in the top. Define the points with a chopstick or similar turning tool.

sew desu ne?

| WWW.CHOLYKNIGHT.COM |

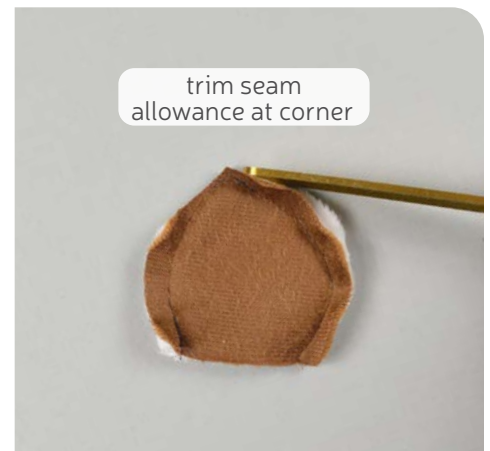


## 10. BASTE THE BANGS

- Pay special attention to the corner of the **BANGS** (4) where you pivoted in the previous step. This little corner should give you the extension needed to attach the bangs to the head front while letting the fringe hang free.
- Take your bangs and align them over the head front so the **center top notch** matches up. The side with the arrow applique should be facing up. Note that the **upper darts** (from steps 6 & 7) will not match up exactly, but rather be very close -- this is to avoid excess bulk in one spot.
- Baste the bangs to the top of the head front. Baste around the entire raw edge. Be sure to move the fringe out of the way so it's not accidentally sewn. When finished, you should have a layer of bangs over Appa's face that nicely drape in front of his eyes.

### BASTING:

A form of temporary sewing meant to hold pieces in place. A long stitch length is often used for this reason. The finished result is not meant to be seen and sometimes is even removed later (depending on your project).



## 11. SEW THE EARS

- Grab your **EAR** pieces (5). Take one from brown fabric and one from cream fabric. Align them with right sides facing and raw edges matching up.
- Sew the ear pieces together along the pointed edge. Leave the straight edge free for turning the ear right side out later.
- Trim the excess seam allowance at the tip of the ear. This will reduce bulk for later when the ears are turned. Repeat this step once more with your remaining ear pieces so you have two sewn ears total.

sew desu ne?

| [WWW.CHOLYKNIGHT.COM](http://WWW.CHOLYKNIGHT.COM) |



- a. Turn the **EARS** (5) right side out through the opening you left.
- b. Fold the ears along the **fold line** found on the paper pattern. Make sure the brown fabrics are facing each other. Baste along the open edge of the ear to hold the fold in place, and repeat for the other ear so you have a pair.
- c. Take your folded ear and place it on the head front, right beneath the **forehead seam**. The brown fabric should be facing down and the fold of the ear should be pointing up.
- d. Baste the ears to the side of the head within the seam allowance to hold them for future steps.

## 12. BASTE THE EARS



## 13. TOP STITCH THE BELLY

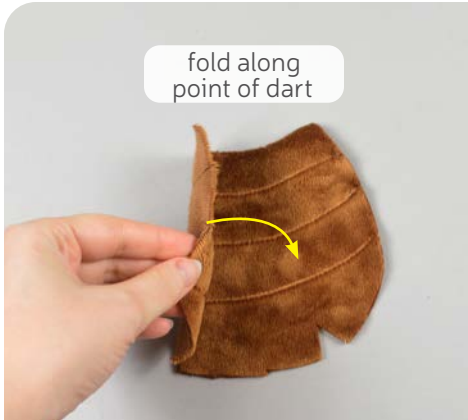
- a. Grab your **BODY** piece from the brown fabric (6). This is the **BELLY**. It has several **top stitching lines** to serve as ridges as seen on Appa's body. To sew them, you can use the paper template as a tracing guide. Trim the paper pattern along the guidelines and trace the edge onto the right side of the fabric.
- b. Stitch along all of the traced lines to complete the top stitching.

### TOP STITCHING:

One or several lines of straight stitching done on the outside of a project to serve a decorative purpose. A longer than average stitch length is typically used so the result is more visible.

sew desu ne?

| WWW.CHOLYKNIGHT.COM |



## 14. SEW THE BELLY DARTS

- The **BELLY** (6) also has a **dart** at each bottom corner. Sew them similarly to the previous **darts**. Fold the belly fabric along the point of the dart to match up the edges.
- Sew the dart starting at the opening and working down to the point. Blend your stitching into the fold of the fabric.
- Repeat with the dart on the other side for two darts total.

- Grab your head front so far as well as your belly. The inner curve on both pieces will be sewn together next -- this is the neck. Both the **BODY** (6) and the **CHIN** (2) have **center markings** for help with alignment.

- Align the head front with the belly at the neck edge with right sides together. The **center markings** should match up.

- Sew the head front to the belly at the neck edge.

- Open up the pieces when complete.

**THE LEGS, UP NEXT, HAVE SOME SLIGHT DIFFERENCES DEPENDING ON THE SIZE. SEE STEP 16 FOR THE LARGE, STEP 17 FOR THE MEDIUM, AND STEP 19 FOR THE SMALL.**

## 15. SEW THE NECK



sew desu ne?

| WWW.CHOLYKNIGHT.COM |



## 16. SEW THE (LARGE) LEG EDGE

- Grab your **LEG** (A7a) and **LEG EDGE** pieces (A7b). The edges with the **double-notches** will be joined next. Flip the leg edge so the right sides of the fabrics are facing and the **double-notches** match up.
- Sew the leg edge to the leg along the **double-notched edge**.
- Open up the pieces and now you can treat it as one full leg. Repeat for your remaining 5 leg and leg edge pieces so you have 6 total.

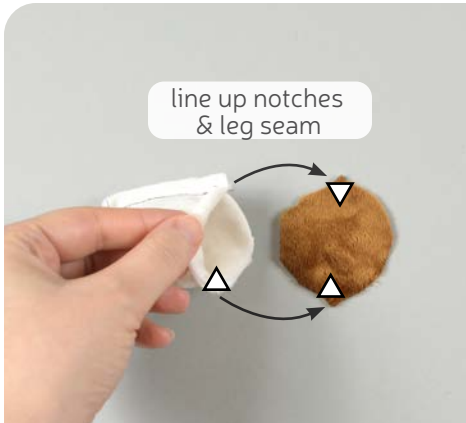


- Take your **LEGS** (A7a/b or B7a) and fold them in half so the straight edges match up.
- Sew along the straight edge of the leg so it makes a tube. Repeat with your remaining 5 leg pieces so you have 6 legs total.

## 17. SEW THE (LARGE OR MEDIUM) LEGS

sew desu ne?

| [WWW.CHOLYKNIGHT.COM](http://WWW.CHOLYKNIGHT.COM) |



## 18. SEW THE (LARGE OR MEDIUM) LEG BOTTOMS

- Grab your **LEG BOTTOM** pieces (A7c or B7b). This circle will be sewn around the wider opening of the **LEG** (A7a/b or B7a). The bottom piece has **notches** on either end to help with alignment. One notch should match the **notch** on the leg (B7a) or leg edge (A7b). The other notch will match up with the seam from step 17.
- Sew the leg bottom to the leg around the edge of the piece.
- Repeat this step with your remaining leg pieces so you have 6 legs total.



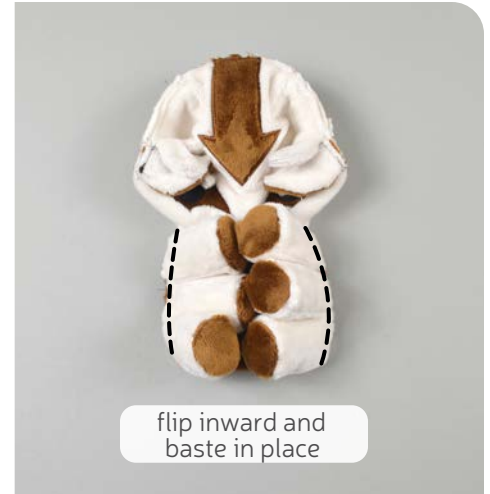
## 19. SEW THE SMALL LEGS

- If you're sewing the small legs, the process is much simpler than the other legs. Grab your **LEG** pieces (C7a). Take two and align them with right sides facing.
- Sew them together around the curved edge. Leave the straight edge free for turning the leg right side out.
- Turn the leg right side out, then repeat this step with your remaining leg pieces so you have 6 sewn legs total.

sew desu ne?

| [WWW.CHOLYKNIGHT.COM](http://WWW.CHOLYKNIGHT.COM) |





## 20. BASTE THE LEGS

- Stuff the **LEGS** very lightly with stuffing. This will make step 26 much easier later when sewing the body.
- If you haven't already, locate the **leg placement lines** found on the paper pattern for the **BODY** (6). Take the open end of the leg and place it within the lines.
- Flip the leg toward the inside of the body and baste the edge of the leg to the body to hold it in place for future steps. Repeat with the remaining 5 legs so you have 3 on each side of the body.  
→ *You can now set the body front aside for a while as we make the body back.*

### ALTERNATIVE:

If the legs are too bulky for you to sew at this stage, you could also leave them unstuffed. Leave an opening in the leg (such as the seam from step 17) and stuff each leg later when Appa is finished. Then sew each leg closed with a ladder stitch along the opening.



## 21. SEW THE HEAD BACK DARTS

- Grab your **HEAD BACK** (8) pieces. This piece has several **darts** that are similar to the ones from the **CHIN** (2) and **FOREHEAD** (3) from steps 5 & 6.
- Begin by sewing the two small bottom **darts**. As usual, start at the opening, then work down to the fold, blending your stitching into the fold as close as possible.
- Next, sew the two upper **darts** in the same way. When complete you should have two upper **darts** and two lower **darts**.

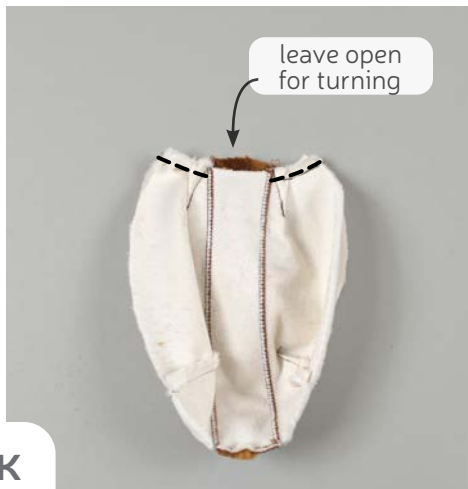
sew desu ne?

| WWW.CHOLYKNIGHT.COM |



## 22. SEW THE BODY BACK DARTS

- Grab your remaining **BODY** piece (6) with the appliqued stripes. This is your **BODY BACK**. Just like the **BELLY**, this piece also has two **darts** along the bottom corners. Sew them the same way. Fold the fabric along the point of the **dart** to match up the slanted lines.
- Next, sew from the opening of the **dart** toward the fold. Blend your stitching into the fold for a smooth transition.
- Repeat with the remaining **dart** on the other side of the body back.



## 23. SEW THE BACK NECK

- Grab your **HEAD BACK** (8) and **BODY BACK** pieces (6) so far. We'll be sewing them together along the neck just like with the front pieces from step 13 except there will be an **opening for turning**. Match up the neck edge of the head and body back. Look for the **center markings** for help with alignment.
- Sew the head back to the body back along the neck edge, but leave an **opening for turning** at the center. For best results, try to make the opening as close to 3" as you can. For the **SMALL** and **MEDIUM** sizes that might only be about 2"-2½".
- Open up the pieces when complete.

### ALTERNATIVE:

You could also leave the opening for turning along the side of the head later in step 26 if you prefer.

sew desu ne?

| WWW.CHOLYKNIGHT.COM |



## 24. SEW THE TAIL

- Grab your **TAIL** pieces (9). The tail has several **top stitching lines** just like the belly from back in step 11. Grab the brown tail piece and repeat the same process as in step 13. Trace the **top stitching lines** and stitch over the traced lines for the tail.
- Take the brown half of your tail and align it over the cream half (with the stripes attached). Bring right sides together and make the raw edges match up.
- Sew the tail pieces together around the curved edge. Leave the straight edge open for turning the tail right side out later.



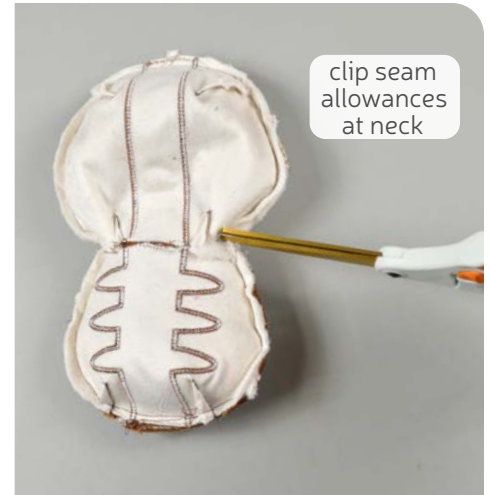
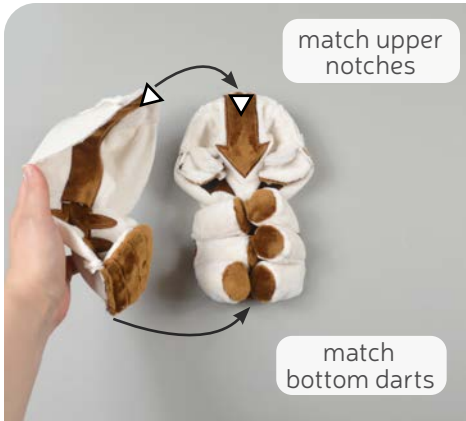
## 25. BASTE THE TAIL

- Turn the **TAIL** (9) right side out through the opening you left.
- Take your tail and place it over the bottom edge of your **BODY BACK** (6). The stripes should be facing each other, and work your best to ensure the edges of the stripes match up.
- Baste the tail to the bottom edge of your body back to hold it in place for the next step.

sew desu ne?

| [WWW.CHOLYKNIGHT.COM](http://WWW.CHOLYKNIGHT.COM) |





## 26. SEW THE FRONT TO THE BACK

- Take the back half of your Appa and align it over the front half from before. The outer shapes are similar, so many of the seams and reference points will match up. The **center top notches**, **upper darts** (from steps 6 & 21), **neck seams** (from steps 15 & 23), and the **lower darts** (from steps 14 & 22) will align.  
Be sure to tuck the legs, ears, tail, and bangs fringe inside the plush when the edges are pinned.
- Sew around the entire shape, pivoting at the **neck seams**. Take it slowly over the **BANGS** and the **LEGS** to make the extra bulk more manageable.
- Make clips into the seam allowance at the neck to help make the seam more flexible when the piece is turned later.



## 27. STUFF THE BODY

- Turn the body right side out through the opening in the back of the neck. Pull out one leg at a time since the opening can be rather tight.
- Stuff the body firmly with stuffing, getting plenty into the head and body so there are no longer wrinkles in the fabric.
- Once the plush is stuffed, make sure the seam allowances in the opening are tucked inside and prepare to ladder stitch it closed. Thread a hand-sewing needle and knot it at the end. Insert the needle from the inside of the opening and out of the plush near one edge of the opening. This will leave the knot inside the plush.

sew desu ne?

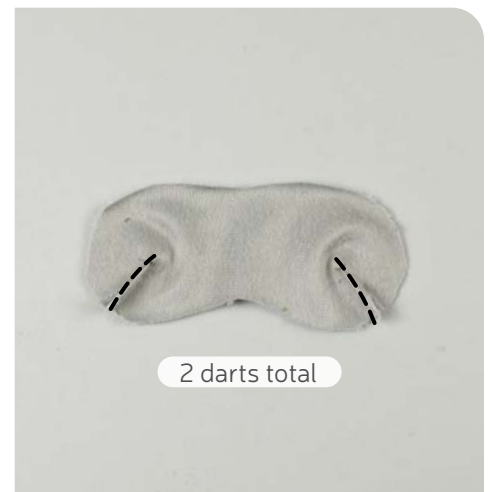
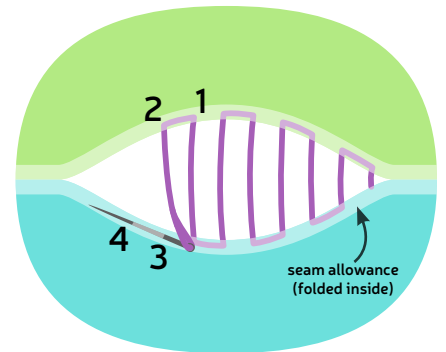
| [WWW.CHOLYKNIGHT.COM](http://WWW.CHOLYKNIGHT.COM) |





## 28. CLOSE UP THE BODY

- Continue from here doing a ladder stitch. Take a 1/8" stitch into the fold of one side of the opening, then go across and take another. Keep going down the opening until you reach the end.
- When you're finished, stitch a knot into the end of the seam. Then insert the needle near the finished knot and out of the plush about 1-2" away.
- Pull the thread through and hold it taut while snipping the thread. The excess thread should sink back inside the plush -- all hidden!



## 29. SEW THE MUZZLE DARTS

- Grab your **MUZZLE** pieces (10). These pieces also have **darts**, just like the head and body pieces from before. Sew them the same way, starting by folding the fabric with right sides together along the point of the **dart** to match up the slanted lines.
- Start at the opening of the **dart** and sew to the point. Blend your stitching into the fold for a smooth and round finish.
- Repeat with the other dart on the other side of your muzzle. Then repeat this again with your remaining muzzle piece so you have two pieces with darts sewn.

sew desu ne?

| [WWW.CHOLYKNIGHT.COM](http://WWW.CHOLYKNIGHT.COM) |



### 30. SEW THE MUZZLE

- Take your two **MUZZLE** pieces and align them with right sides facing and raw edges and **dart** seams matching up.
- Sew the two pieces together around the outer edge. Leave an **opening for turning** along the upper edge as marked on the paper pattern.
- Make clips into the seam allowance of the muzzle at the inner curve. This will help increase flexibility when the piece is turned later.



### 31. STUFF THE MUZZLE

- Turn the **MUZZLE** right side out through the opening.
- Stuff the muzzle firmly with stuffing, enough so there are no wrinkles in the fabric, especially near the seams and the darts.
- Ladder stitch it closed, similar to how the body was sewn back in step 28.

sew desu ne?

| [WWW.CHOLYKNIGHT.COM](http://WWW.CHOLYKNIGHT.COM) |



## 32. ATTACH THE MUZZLE

- Take your sewn **MUZZLE** and align it across Appa's face, just beneath the eyes. The side with the **darts** should be pointing down. Hold it in place by sticking pins down through the muzzle and into the head. This will hold it lightly while we stitch it in place.
- Thread a hand sewing needle and knot the end. Ladder stitch the muzzle to the face, going along the top edge first. It helps to take long basting stitches at first just to get the placement right. Stitch the muzzle to the face just above the seam -- this will help the muzzle sink into the fabric for a natural look.
- Turn at the end of the muzzle so you're now stitching the underside. Stitch across the middle of the muzzle (this is also marked on the paper pattern for help). This will help the bottom edge of the muzzle stick out, and the bottom seam will look a little like a mouth. For best results, go around the muzzle first with long basting stitches, just to hold it in place. Then you can remove the pins. Check that you like the placement, then go around the muzzle again with neater, tinier stitches to secure it.



## 33. SEW THE NOSE

- Grab your **NOSE** pieces (11). Align them with right sides facing and raw edges matching up.
- Sew them together around the outer edge, but leave an **opening for turning** along one side as marked on the paper pattern.
- Turn the nose right side out through the opening.

sew desu ne?

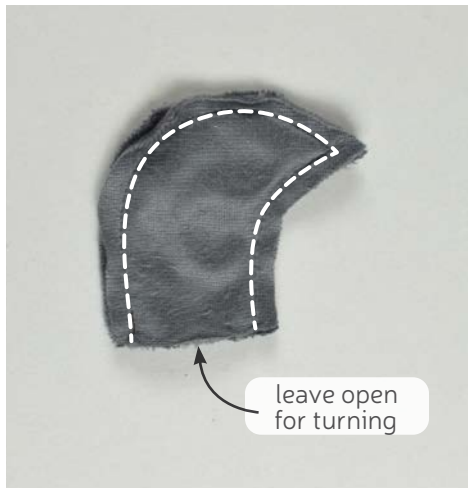
| [WWW.CHOLYKNIGHT.COM](http://WWW.CHOLYKNIGHT.COM) |





### 34. ATTACH THE NOSE

- Stuff the **NOSE** lightly with stuffing, just enough so it takes shape and looks puffy. Tuck in the seam allowances and sew the opening closed with a ladder stitch.
- Take the sewn nose and place it over the **MUZZLE** of your Appa. Center it between the eyes and along the upper edge of the muzzle.
- Ladder stitch the nose to the muzzle like in step 31. Stitch just above the seam line to help it sink into the muzzle.



### 35. SEW THE HORNS

- Grab your **HORN** pieces (12). Take two of them and align them with right sides facing and raw edges matching up.
- Sew the horn pieces together around the pointed edge. Leave the straight edge free for turning the horn right side out later.
- Trim the seam allowances at the tip of the horn to reduce bulk when the horn is turned next.

sew desu ne?

| [WWW.CHOLYKNIGHT.COM](http://WWW.CHOLYKNIGHT.COM) |



- a. Repeat step 35 with your remaining **HORN** pieces, then turn them both right side out. Define the points with a chopstick or similar turning tool.
- b. Thread a hand sewing needle and knot the end. Sew a gathering stitch around the opening of the horn, about  $\frac{1}{4}$ " in from the edge. Pull at the thread to cinch the horn closed.
- c. Place the cinched end of the horn onto Appa's head, just above the ear. Center it on the head seam and ensure that the horn tips are pointing up.
- d. Ladder stitch the horn to the head around the base.

### 36. ATTACH THE HORNS



#### GATHERING:

The process of shortening the length of a piece of fabric by sewing long stitches through it. When the thread is pulled, it forms small folds that ruffle the fabric.

#### GATHERING STITCH:

A long version of the running stitch, which is a stitch done by weaving the needle in and out of a length of fabric going along a line. The long stitches (about  $\frac{1}{4}$ "- $\frac{1}{2}$ " long) gather the fabric when pulled later.

**CONGRATS!**  
This completes  
your plush! Now  
give it a big hug!



sew desu ne?

| [WWW.CHOLYKNIGHT.COM](http://WWW.CHOLYKNIGHT.COM) |

dart

applique  
placement

A1 A2



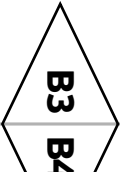
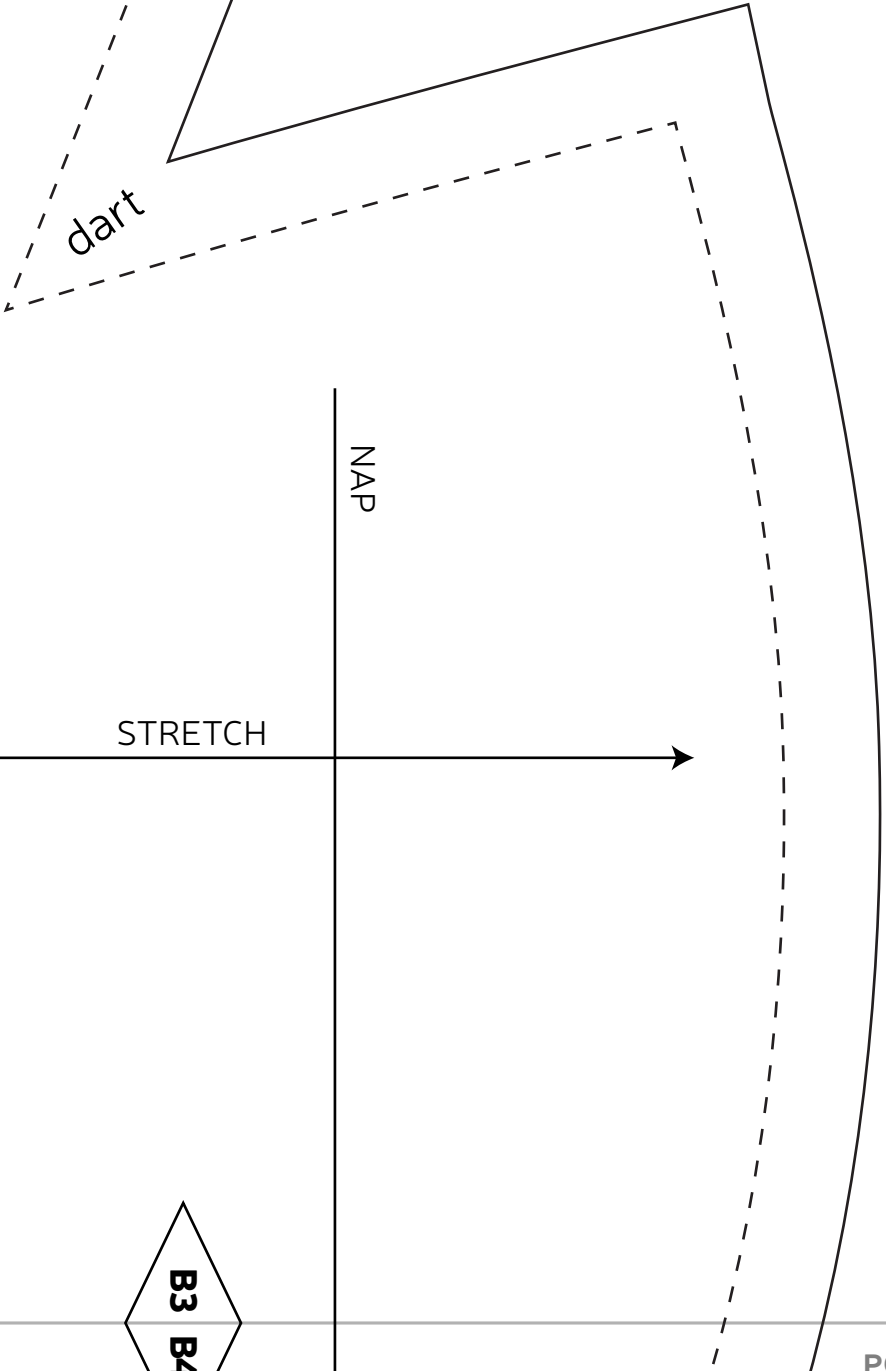
Appa Plush

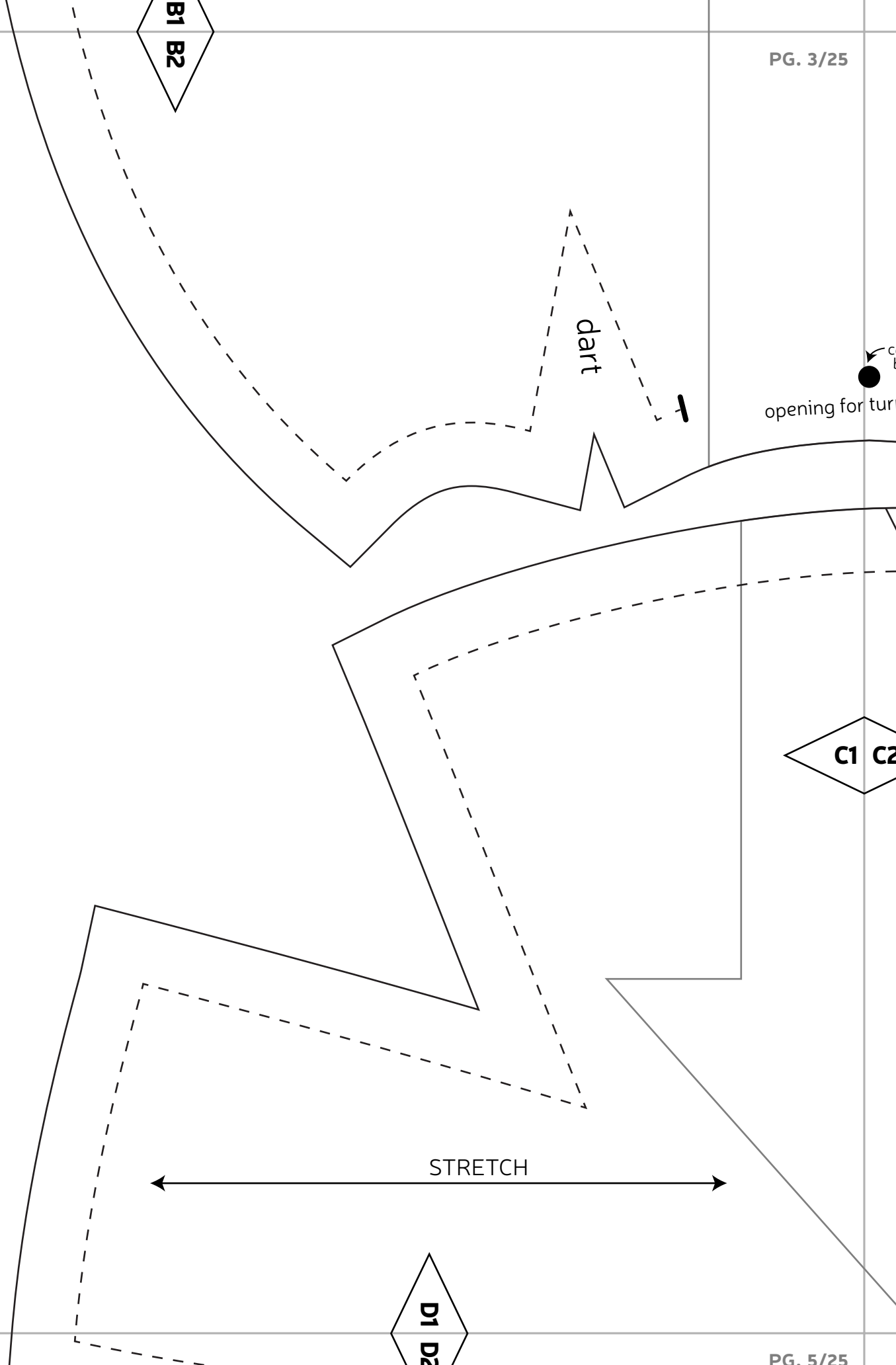
P A T T E R N

WWW.CHOLYKNIGHT.COM

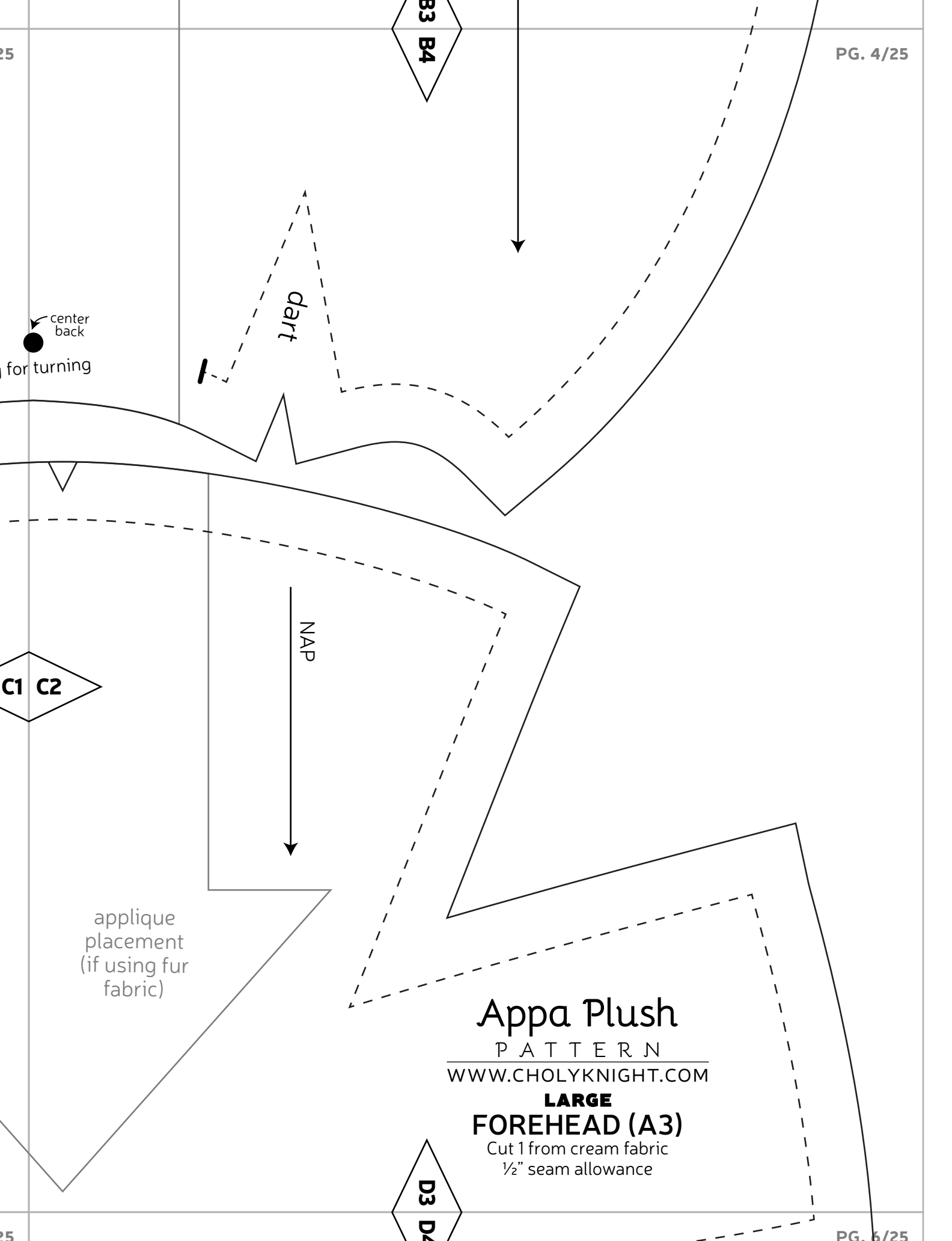
**LARGE****HEAD BACK (A8)**Cut 1 from cream fabric  
1/2" seam allowance

B1 B2









B3 B4

*dart*

center  
back  
for turning

NAP

C1 C2

applique  
placement  
(if using fur  
fabric)

Appa Plush

P A T T E R N

WWW.CHOLYKNIGHT.COM

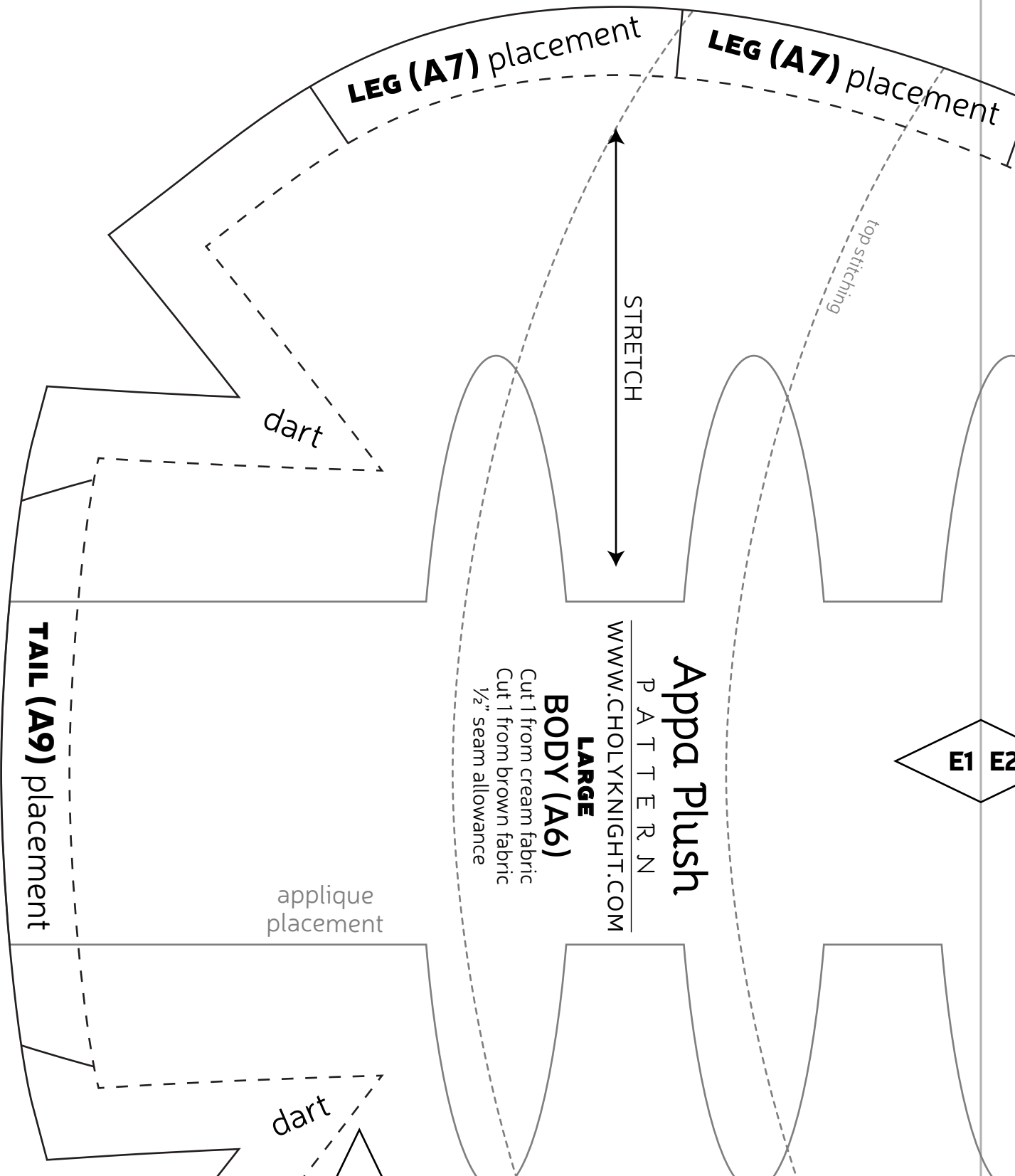
**LARGE**

**FOREHEAD (A3)**

Cut 1 from cream fabric  
1/2" seam allowance

D3 D4

D1 D2



# Appa Plush

P A T T E R N

[WWW.CHOLYKNIGHT.COM](http://WWW.CHOLYKNIGHT.COM)

**BODY (A6)**

Cut 1 from cream fabric  
Cut 1 from brown fabric  
1/2" seam allowance

aplique placement

dart

F1 F2

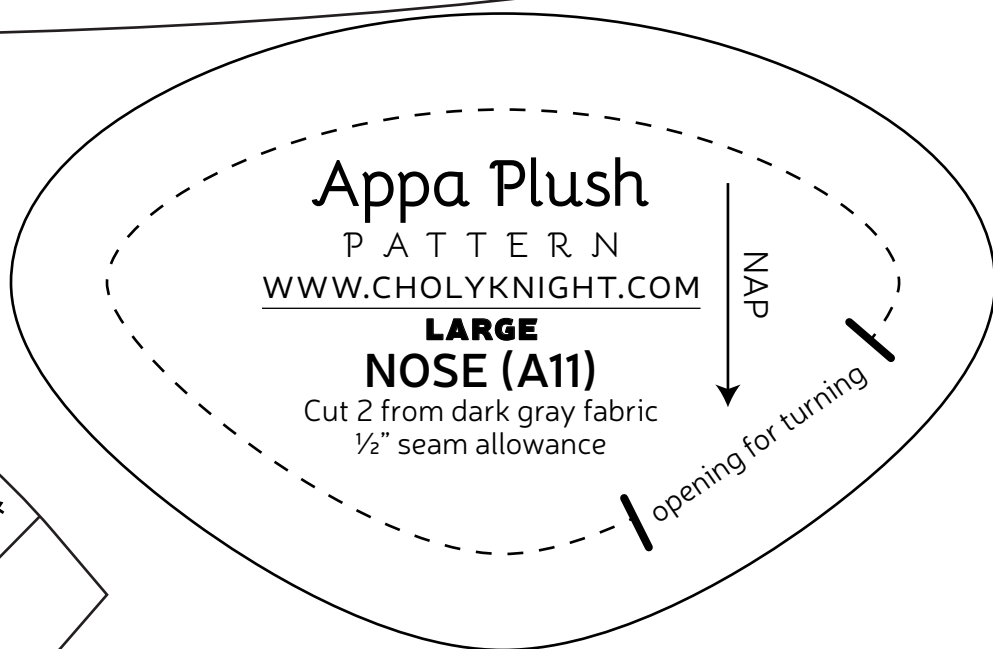
E1 E2

ment

LEG (A7) placement

E1 E2

center



# Appa Plush

P A T T E R N

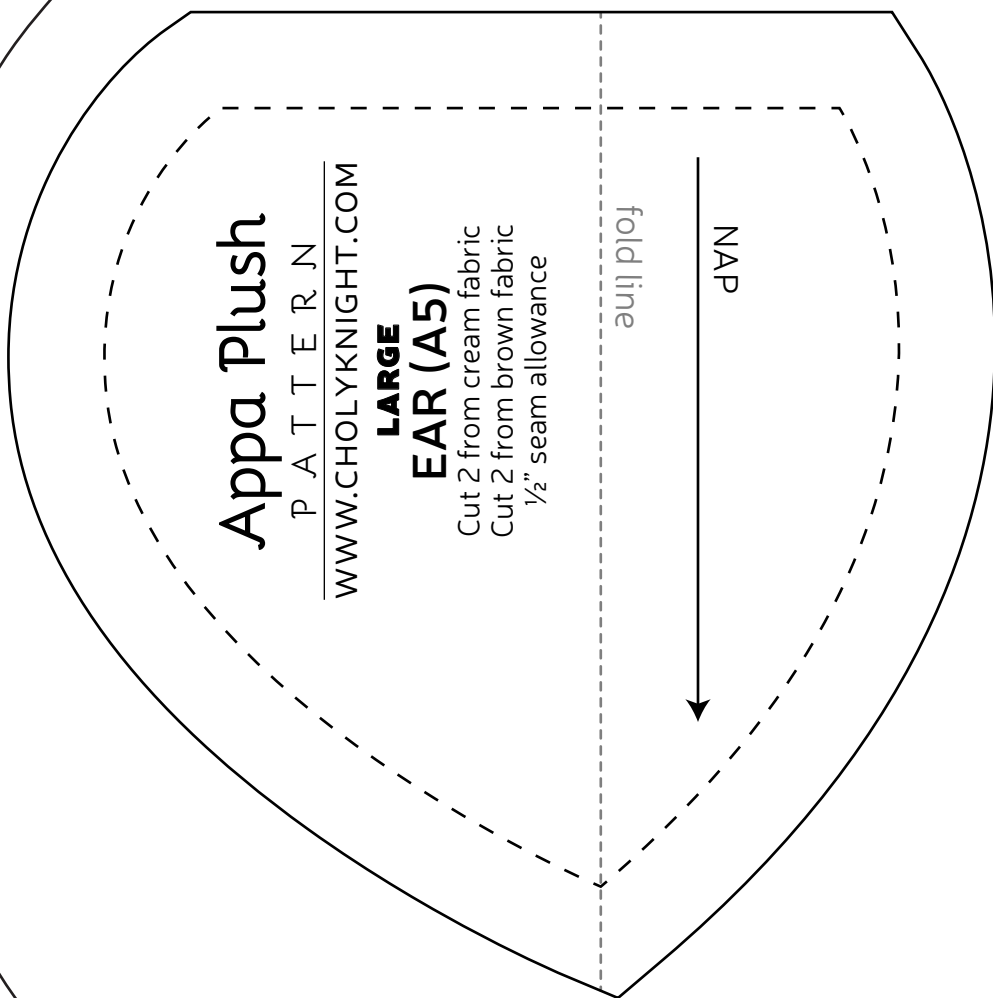
[WWW.CHOLYKNIGHT.COM](http://WWW.CHOLYKNIGHT.COM)

## LARGE NOSE (A11)

Cut 2 from dark gray fabric  
1/2" seam allowance

NAP

opening for turning



# Appa Plush

P A T T E R N

[WWW.CHOLYKNIGHT.COM](http://WWW.CHOLYKNIGHT.COM)

## LARGE EAR (A5)

Cut 2 from cream fabric  
Cut 2 from brown fabric  
1/2" seam allowance

fold line

NAP

F1 F2

NAP

LEG (A7) placement

LEG (A7) placement

G1 G2

applique  
placement

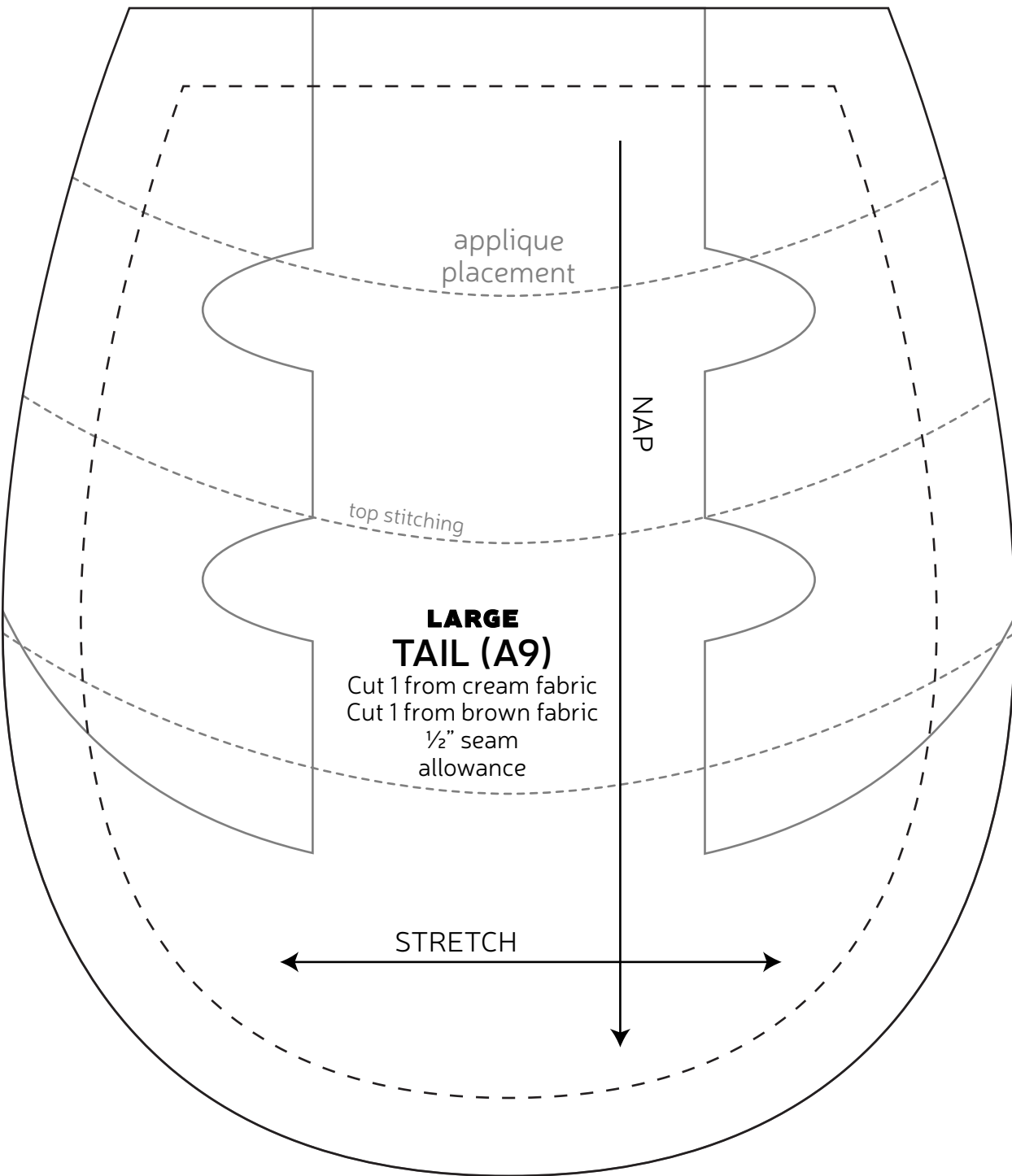
NAP

top stitching

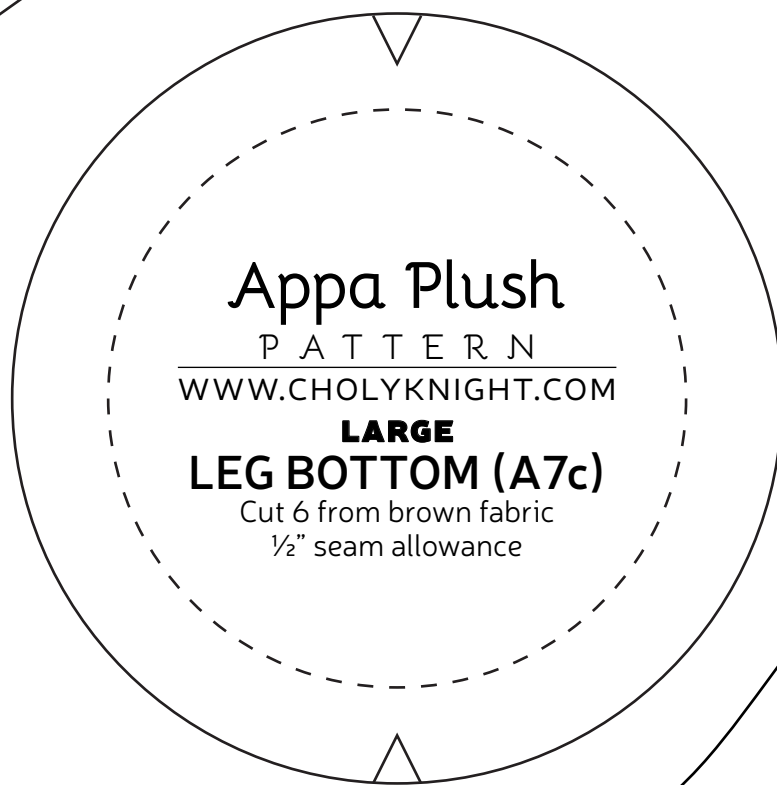
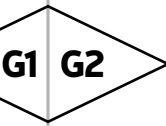
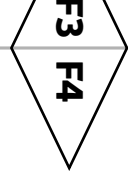
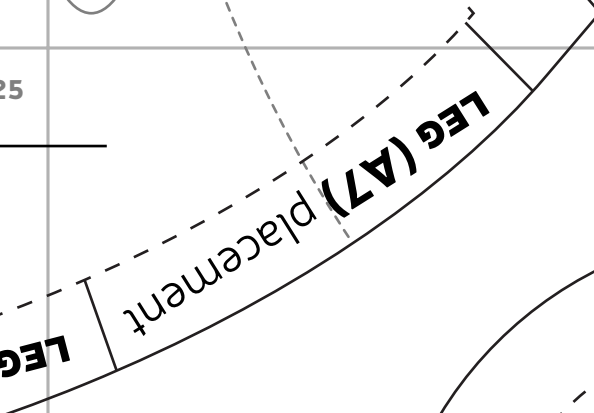
**LARGE  
TAIL (A9)**

Cut 1 from cream fabric  
Cut 1 from brown fabric  
1/2" seam  
allowance

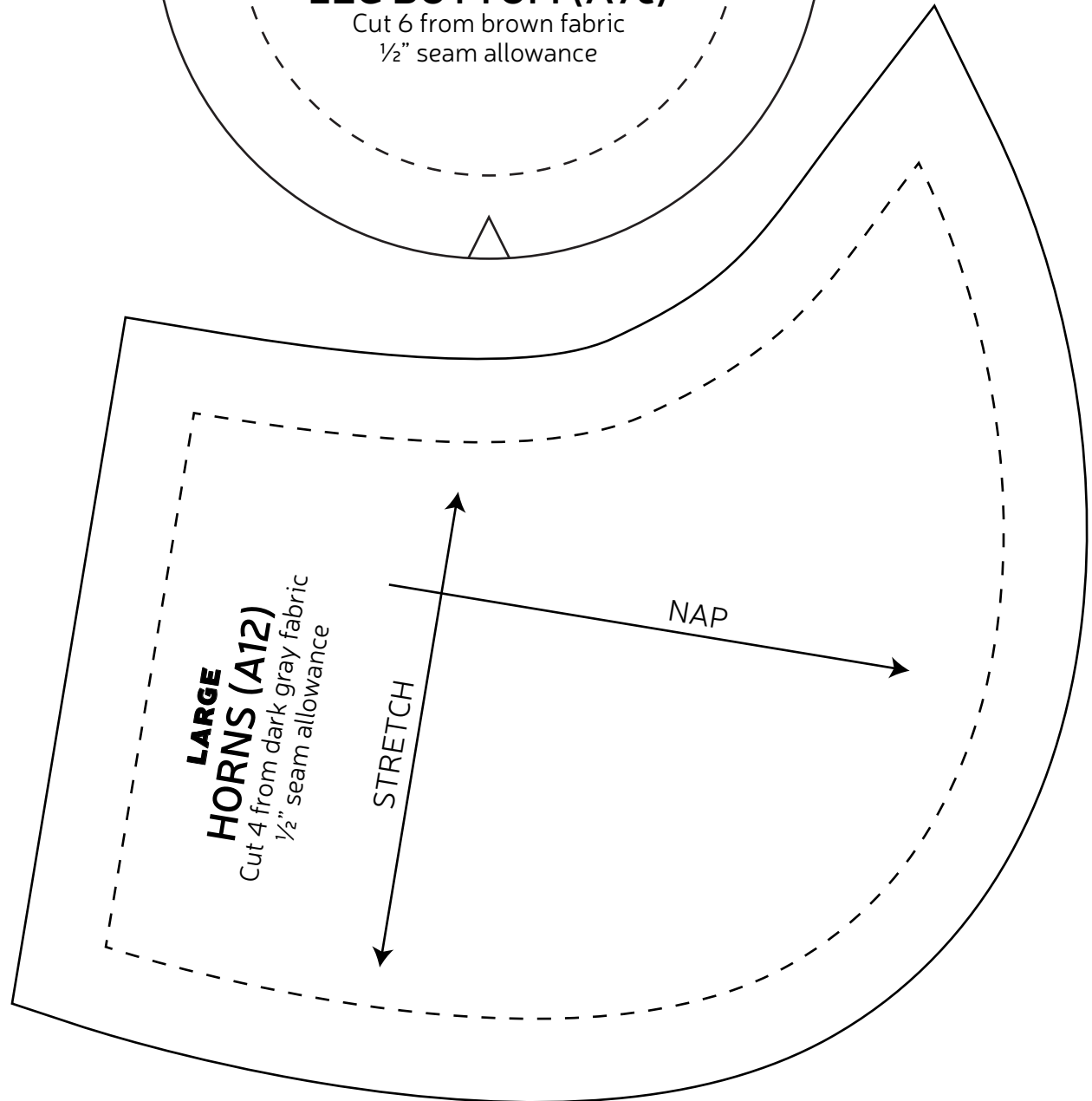
STRETCH







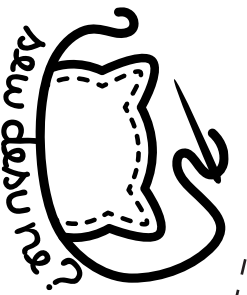
**Appa Plush**  
 P A T T E R N  
[WWW.CHOLYKNIGHT.COM](http://WWW.CHOLYKNIGHT.COM)  
**LARGE**  
**LEG BOTTOM (A7c)**  
 Cut 6 from brown fabric  
 1/2" seam allowance



**LARGE**  
**HORNS (A12)**  
 Cut 4 from dark gray fabric  
 1/2" seam allowance

STRETCH

NAP



# Appa Plush

P A T T E R N

[WWW.CHOLYKNIGHT.COM](http://WWW.CHOLYKNIGHT.COM)

**LARGE**

**BANGS (A4)**

Cut 2 from cream fabric (if using smooth fabric)  
Skip if using fur fabric  
1/2" seam allowance

H1 H2

applique  
placement

I1 I2

**LARGE  
CHIN (A2)**

Cut 1 from cream fabric  
1/2" seam allowance

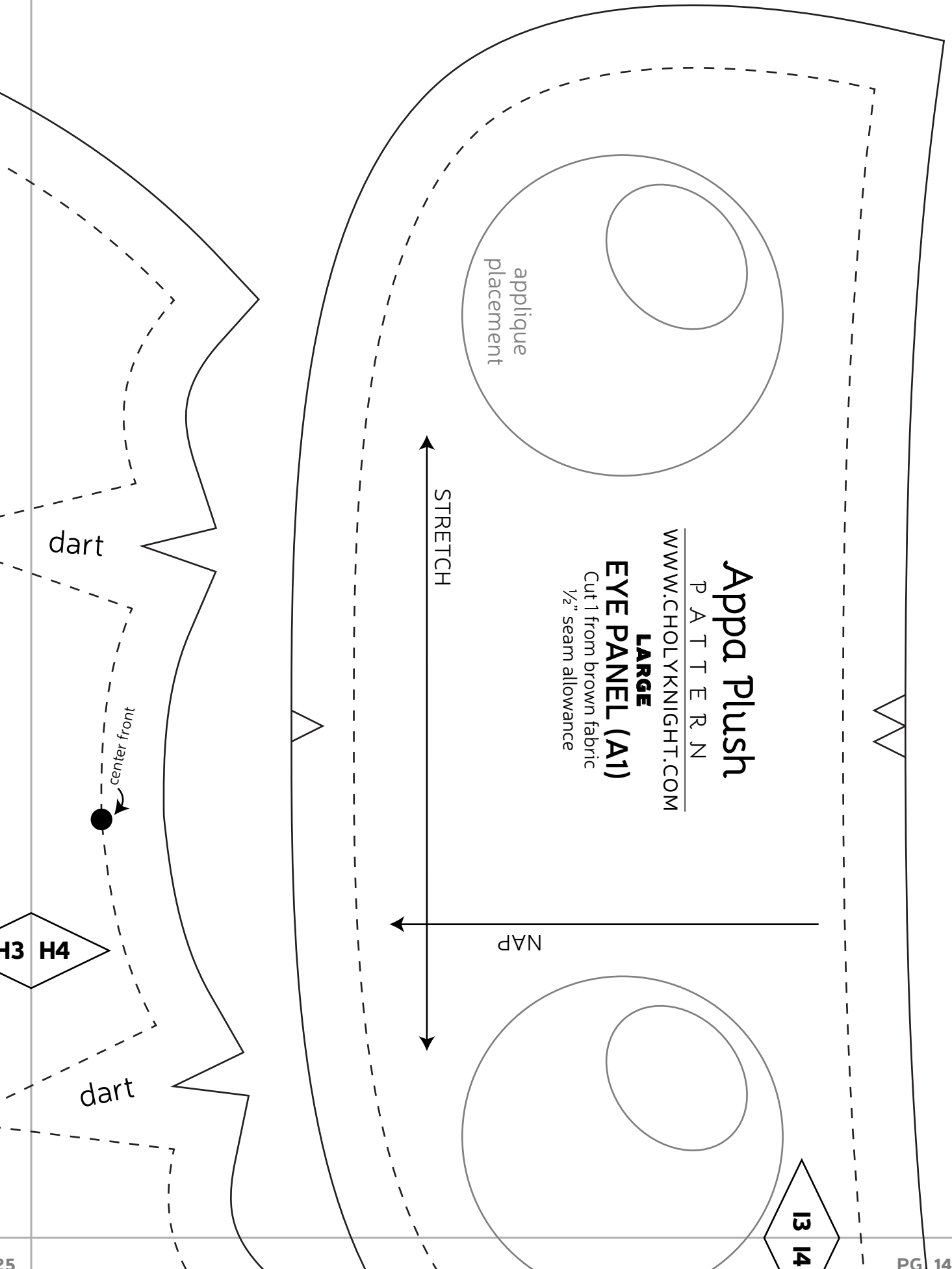
STRETCH

dart

H1 H2

H3 H4

13 14



# Appa Plush

P A T T E R N

[WWW.CHOLYKNIGHT.COM](http://WWW.CHOLYKNIGHT.COM)

**LARGE**

## EYE PANEL (A1)

Cut 1 from brown fabric  
1/2" seam allowance

STRETCH

NAP

dart

center front

dart

H3 H4

13 14



I1 I2

STRETCH

NAP

J1 J2

# Appa Plush

P A T T E R N

WWW.CHOLYKNIGHT.COM

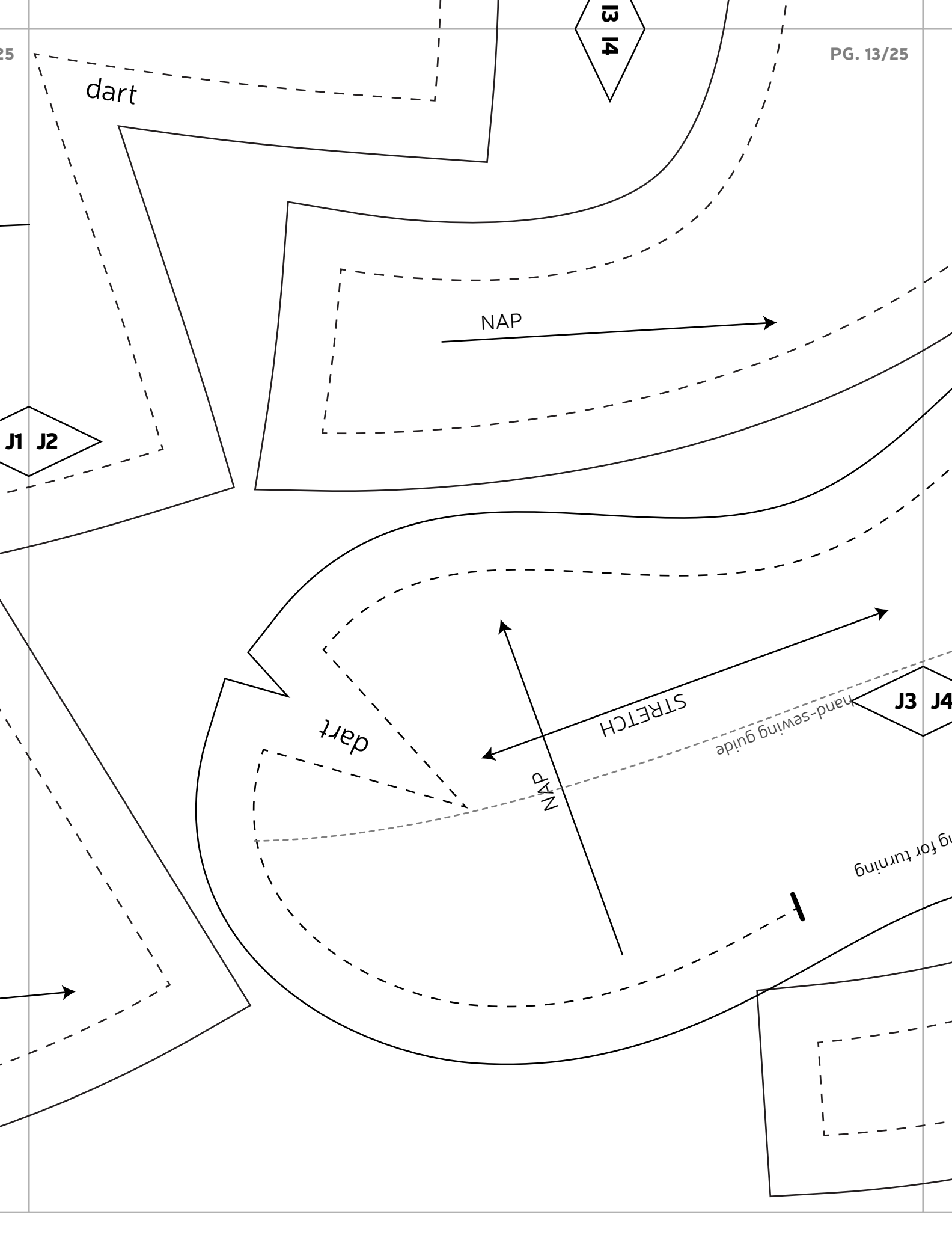
**LARGE**

## UPPER LEGS (A7a)

Cut 6 from cream fabric  
1/2" seam allowance

NAP

STRETCH



13 14

dart

# Appa Plush

P A T T E R N

WWW.CHOLYKNIGHT.COM

## LARGE MUZZLE (A10)

Cut 2 from gray fabric  
1/2" seam allowance

J3 J4

opening for tu

## LARGE LEG EDGE (A7b)

Cut 6 from brown fabric  
1/2" seam allowance

NAP

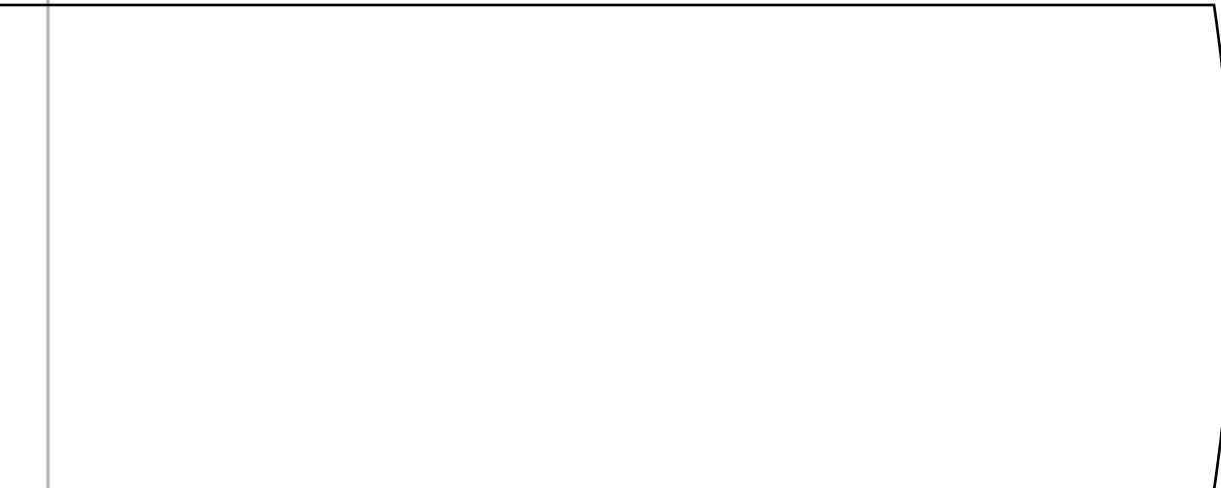
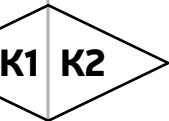
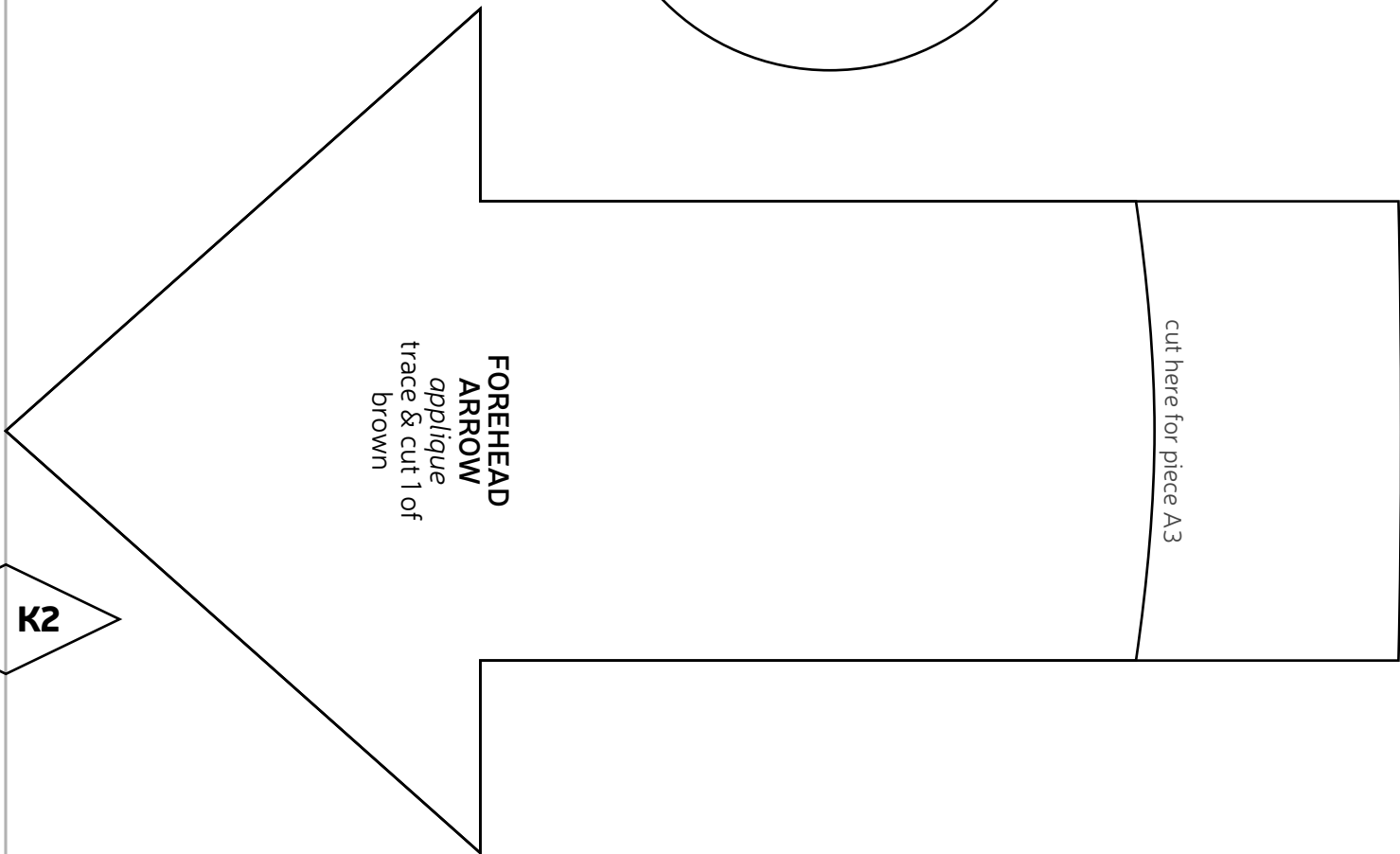
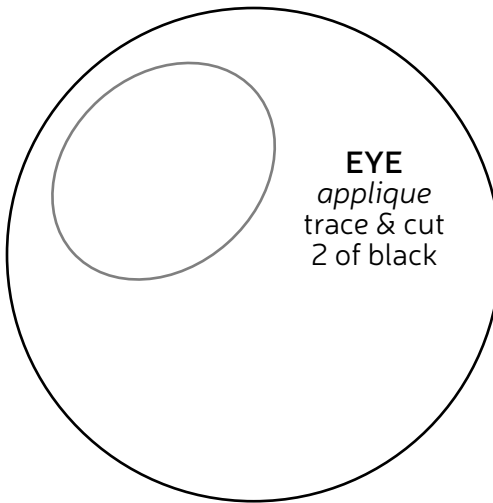
STRETCH

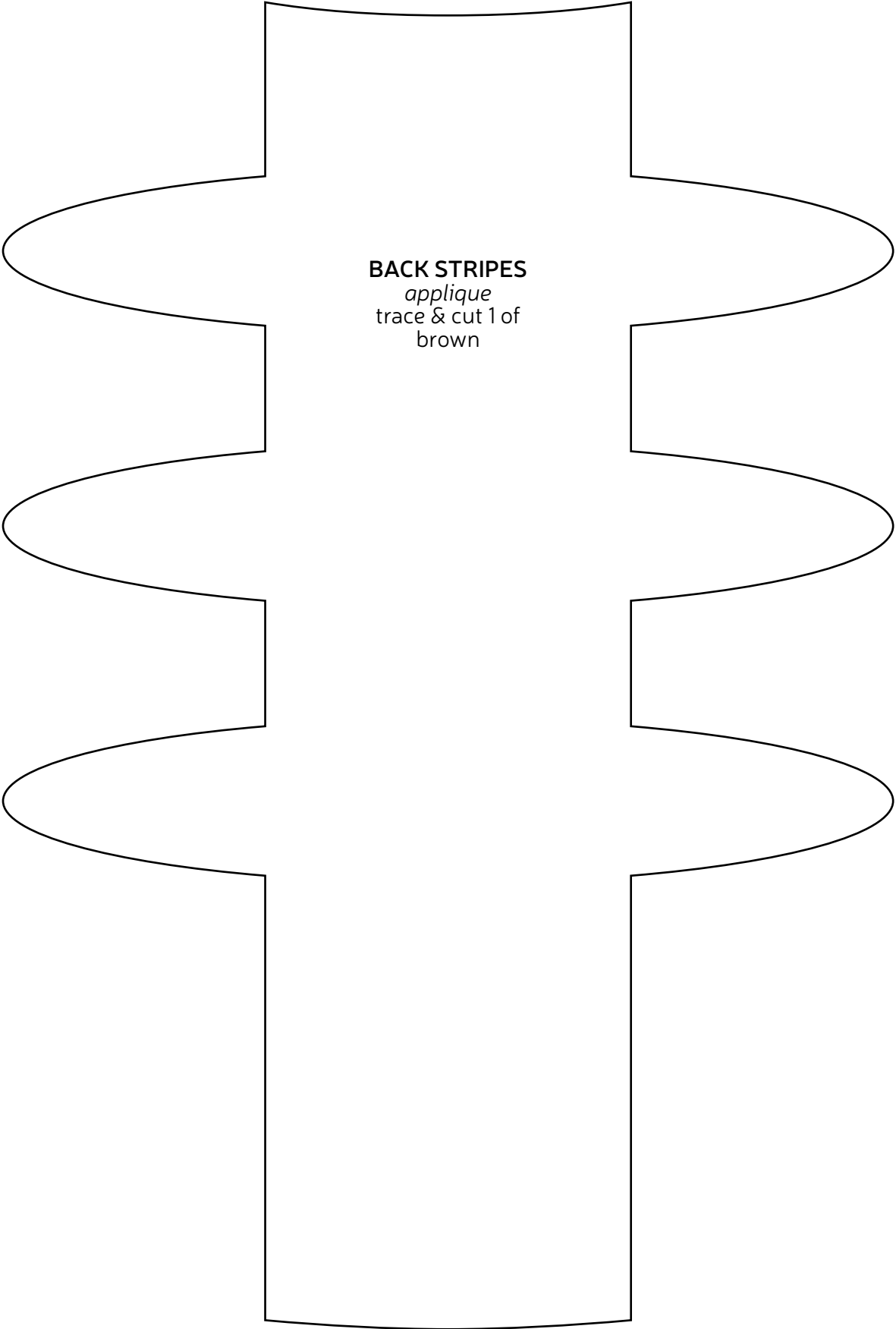
K1 K2

**TAIL STRIPES**  
*applique*  
trace & cut 1 of  
brown

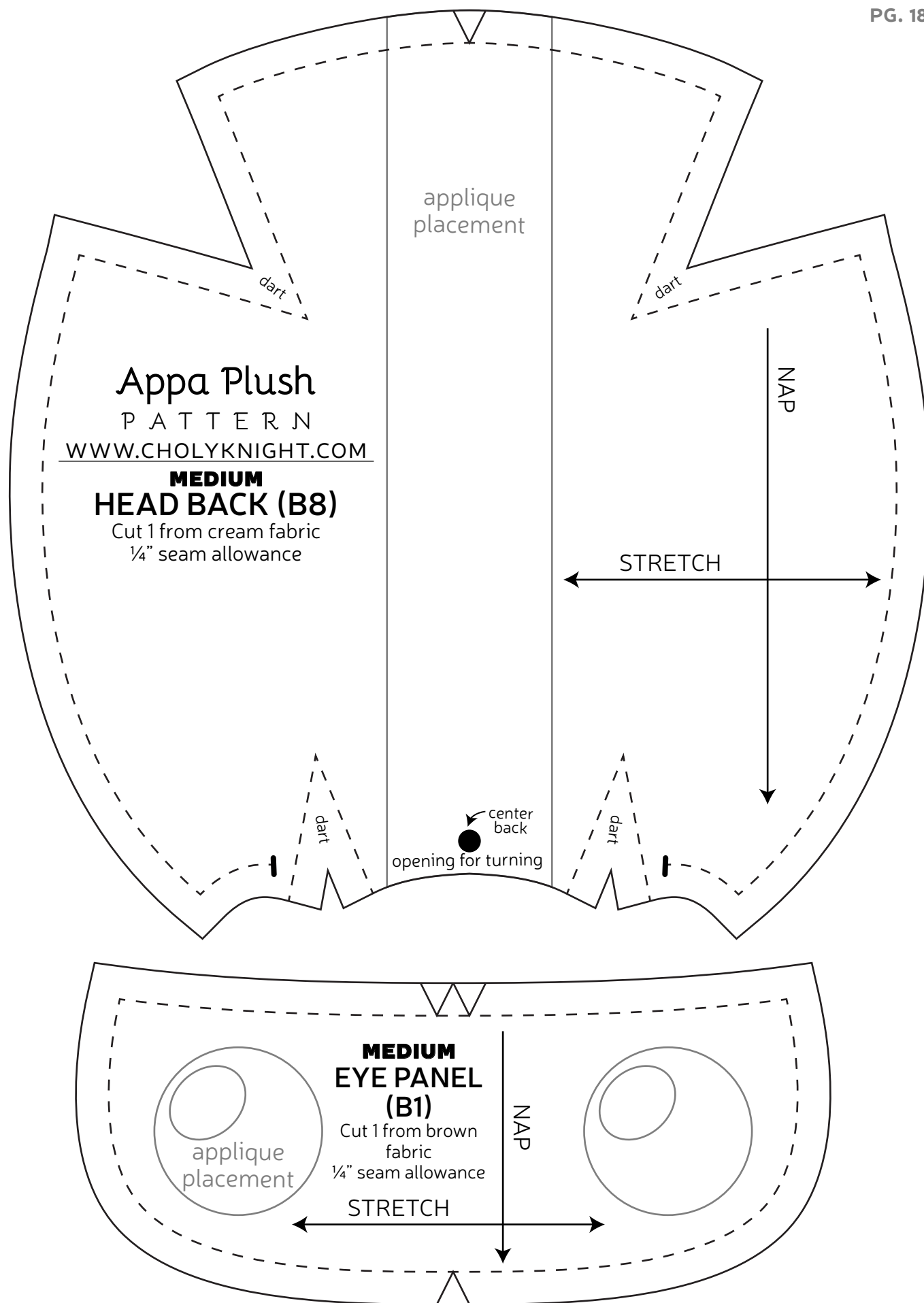
**HEAD BACK  
STRIPE**  
*applique*  
trace & cut 1 of  
brown

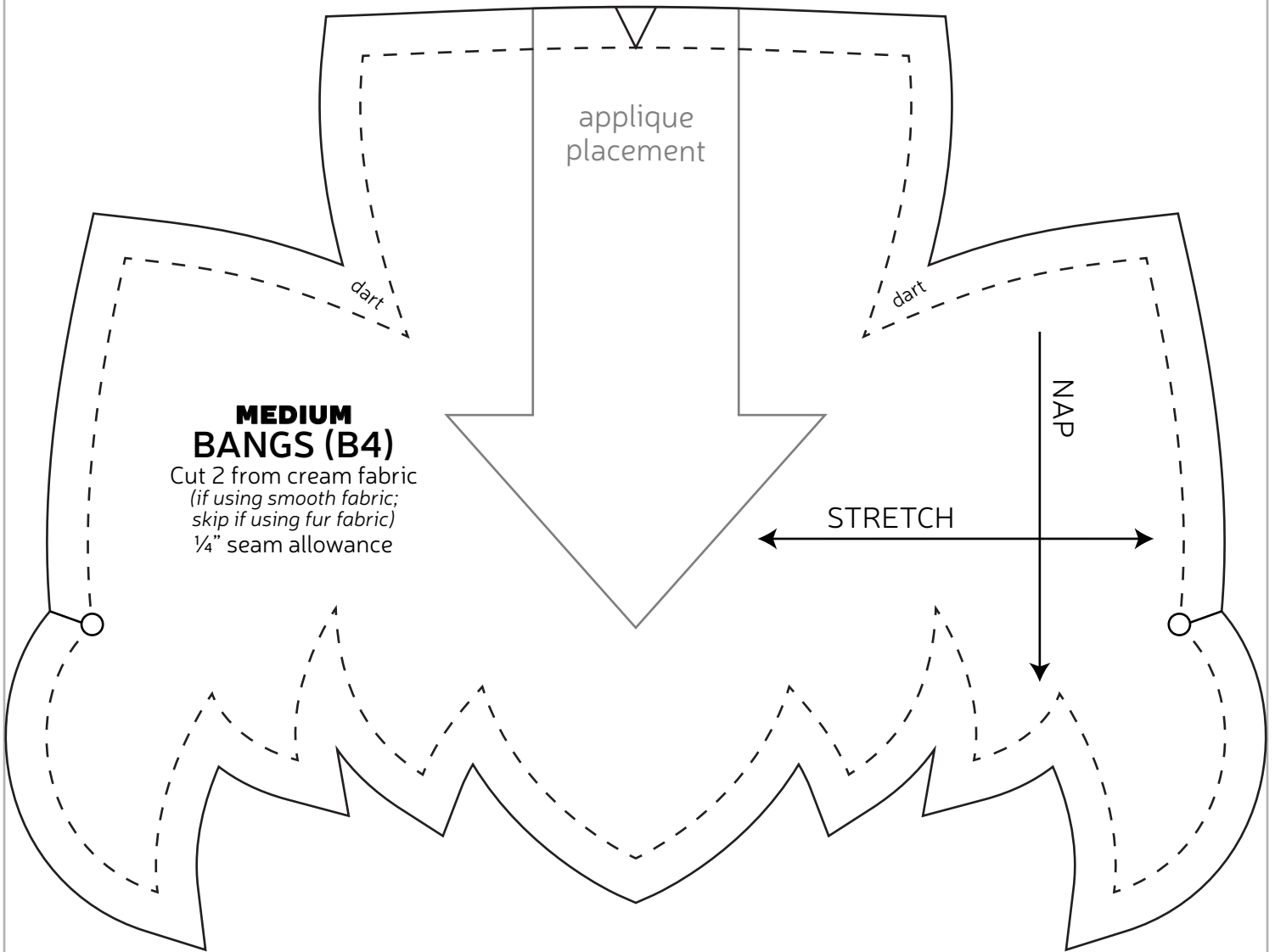
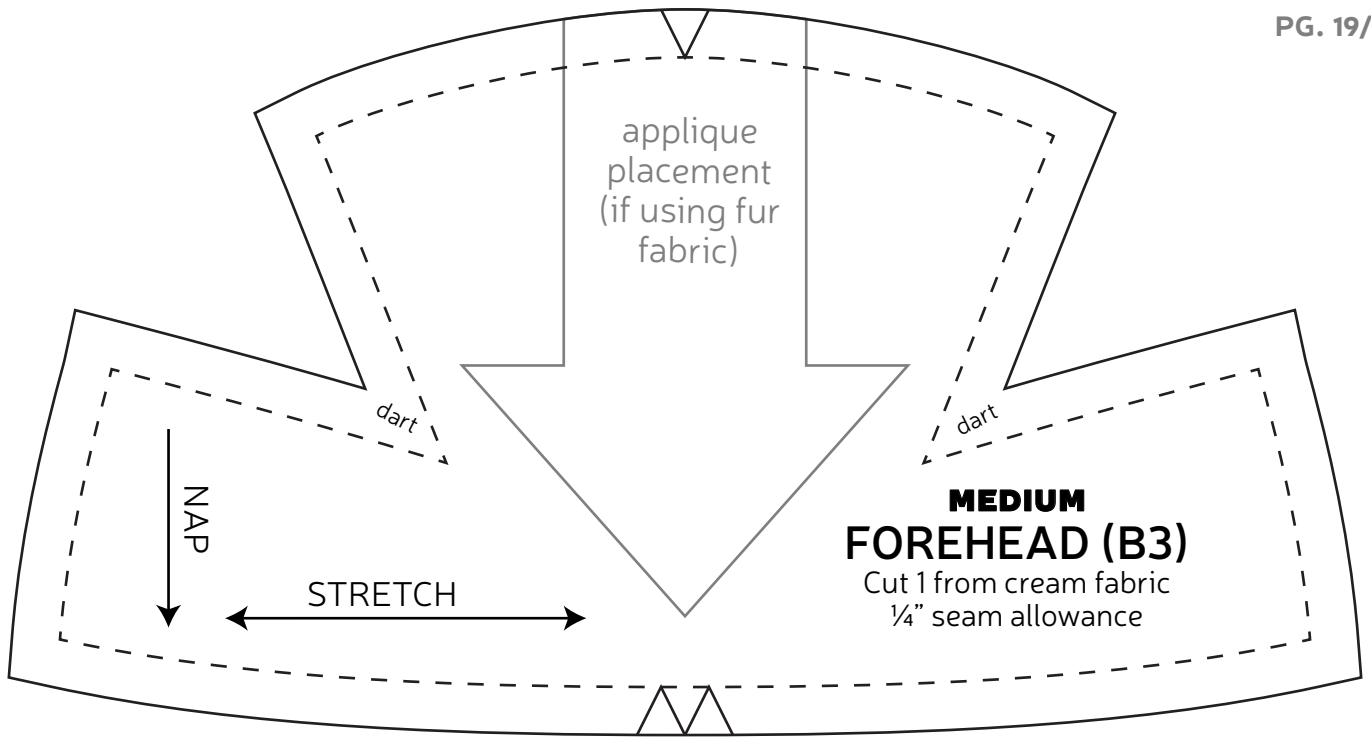




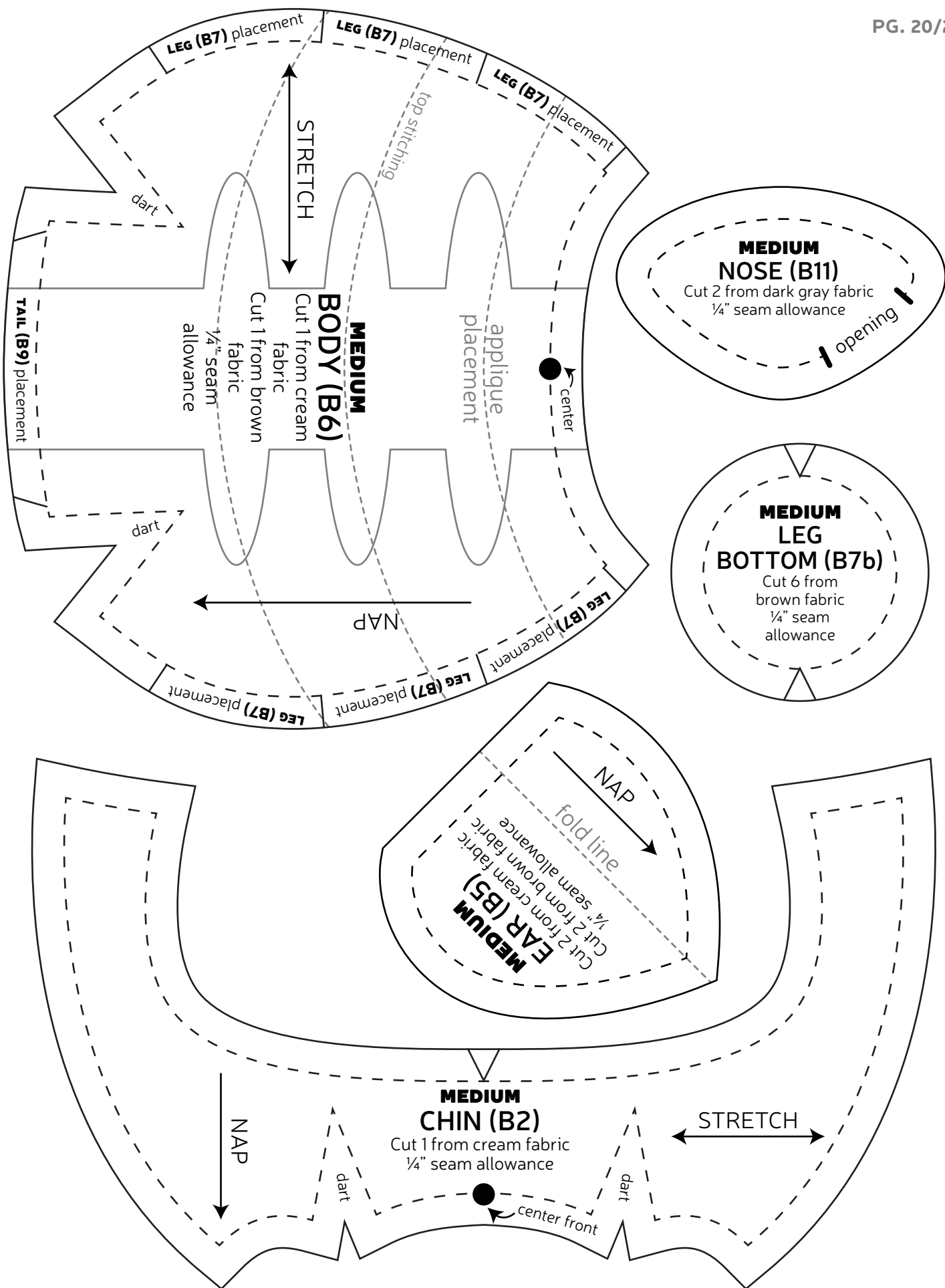


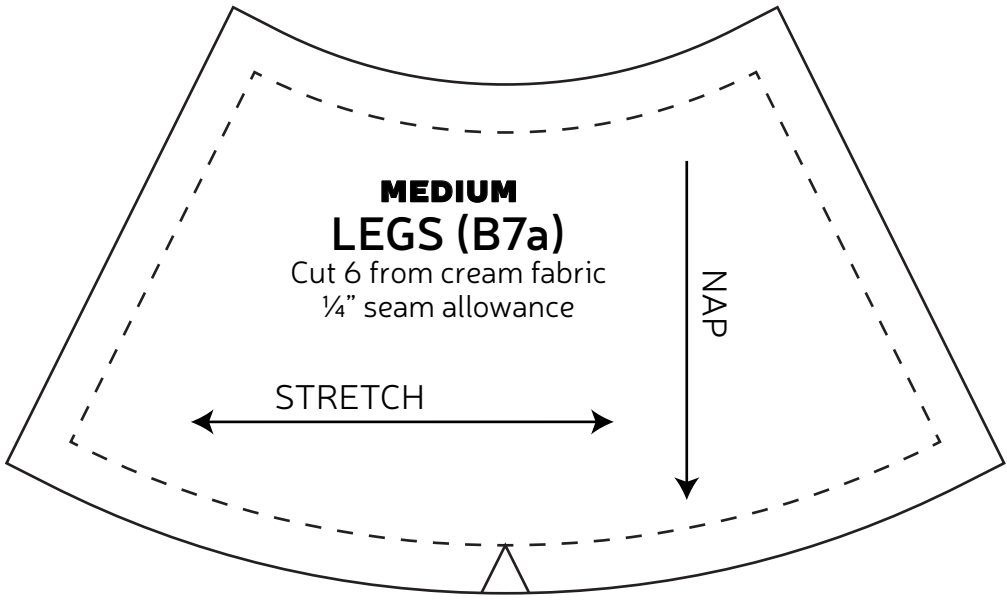
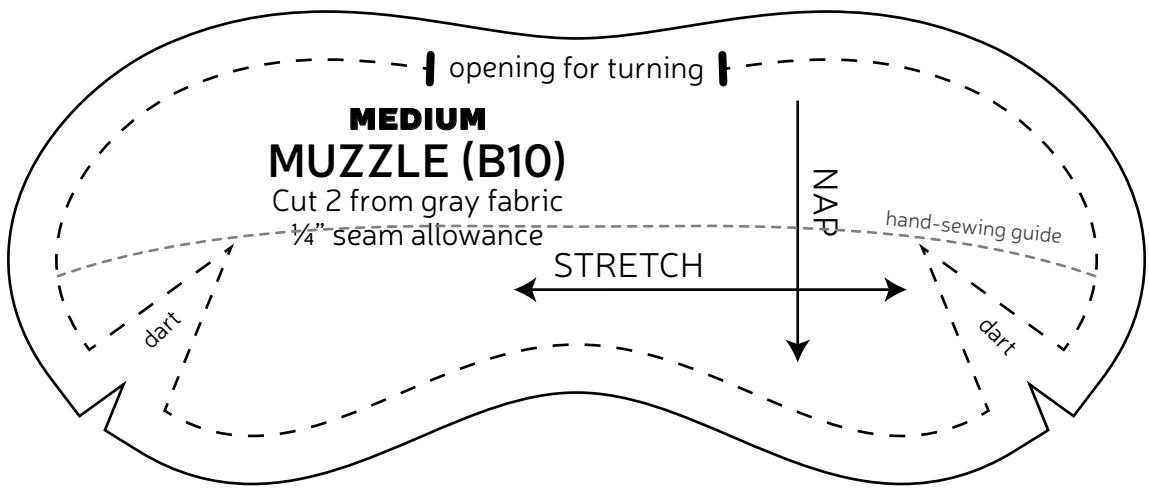
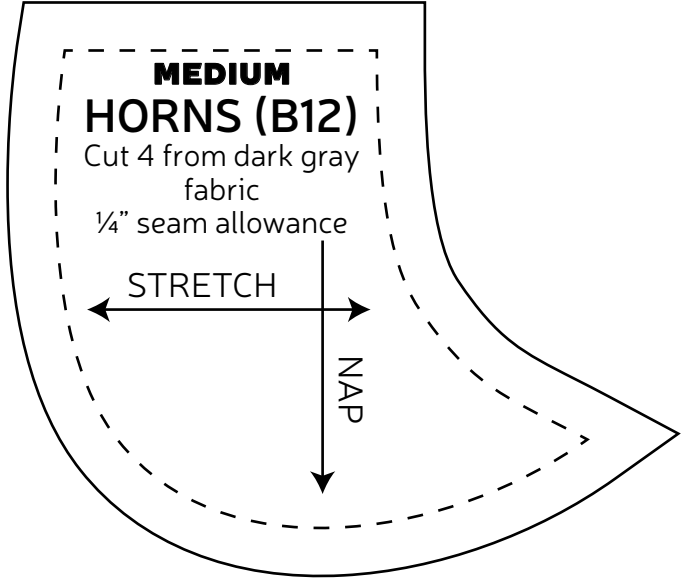
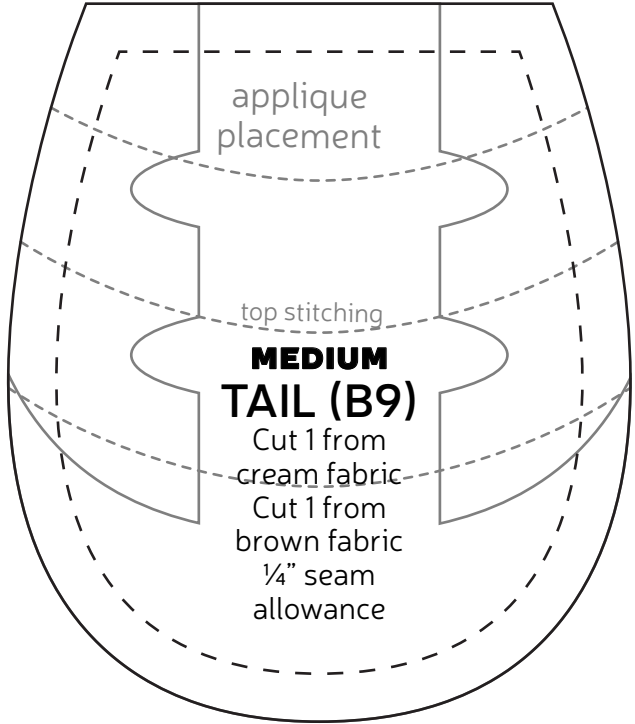
**BACK STRIPES**  
*applique*  
trace & cut 1 of  
brown

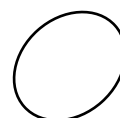
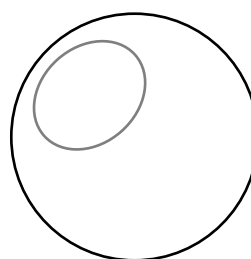
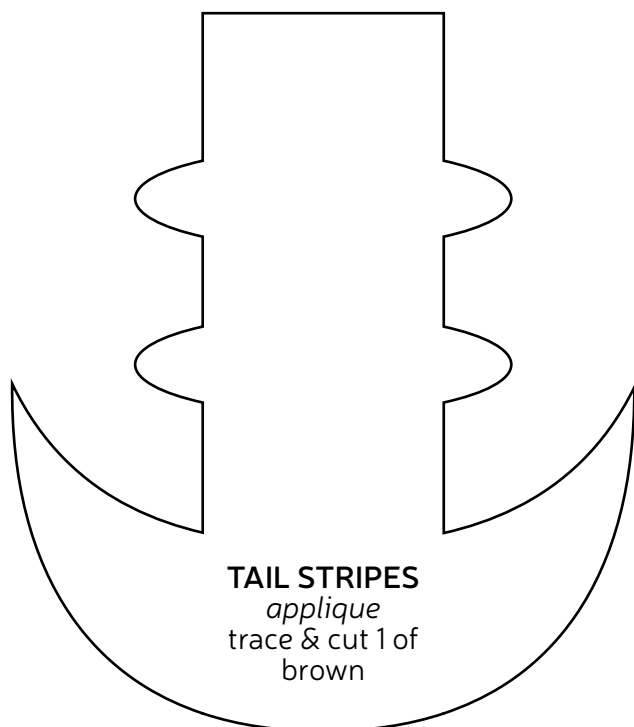
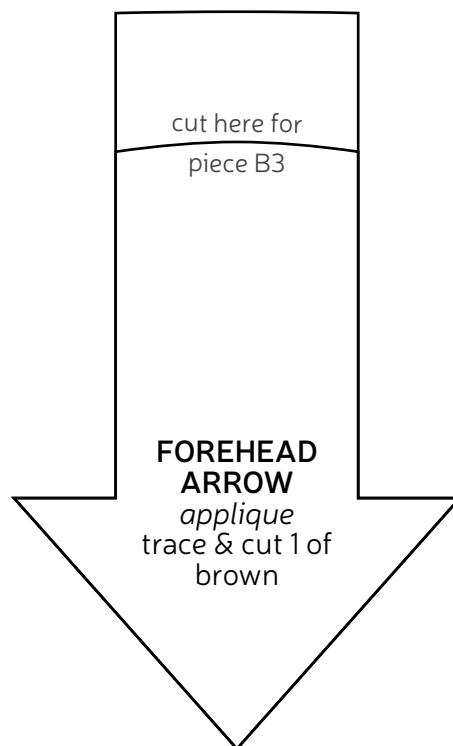
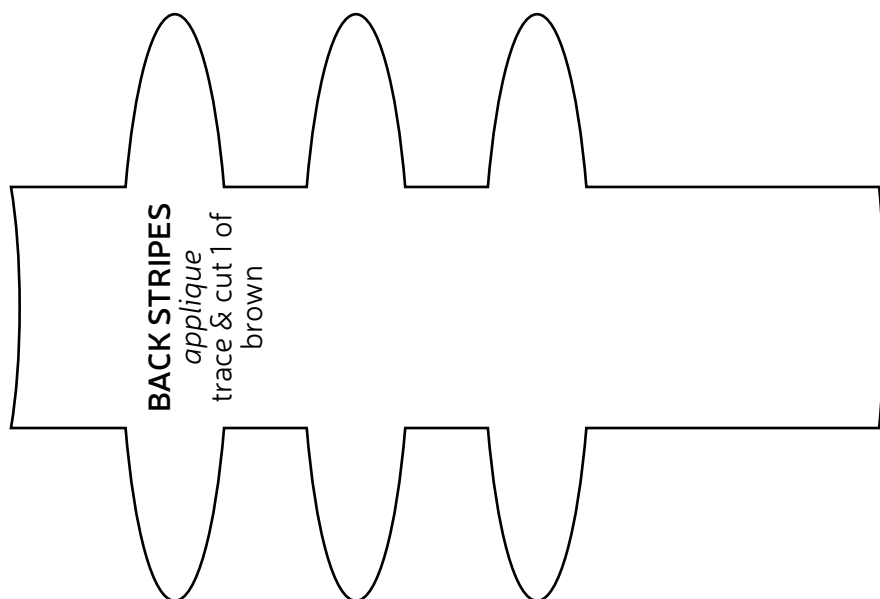


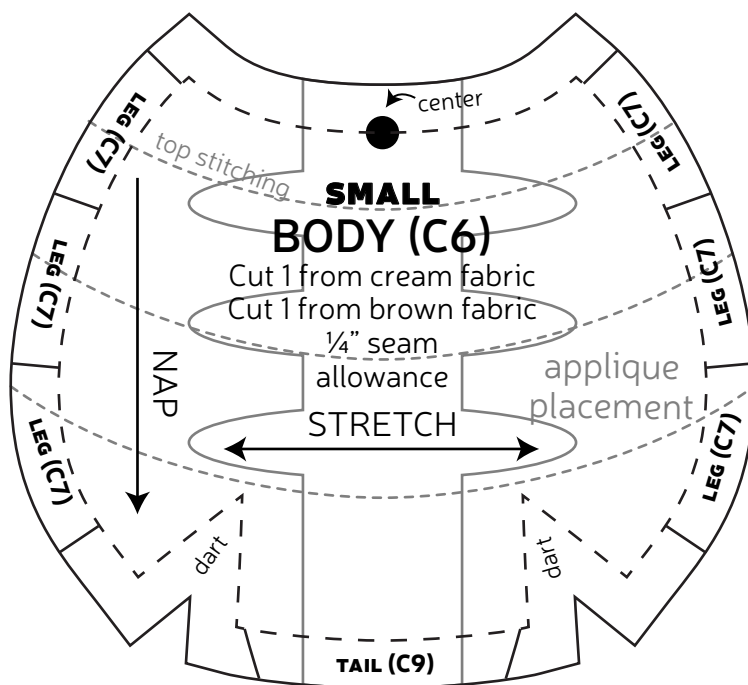
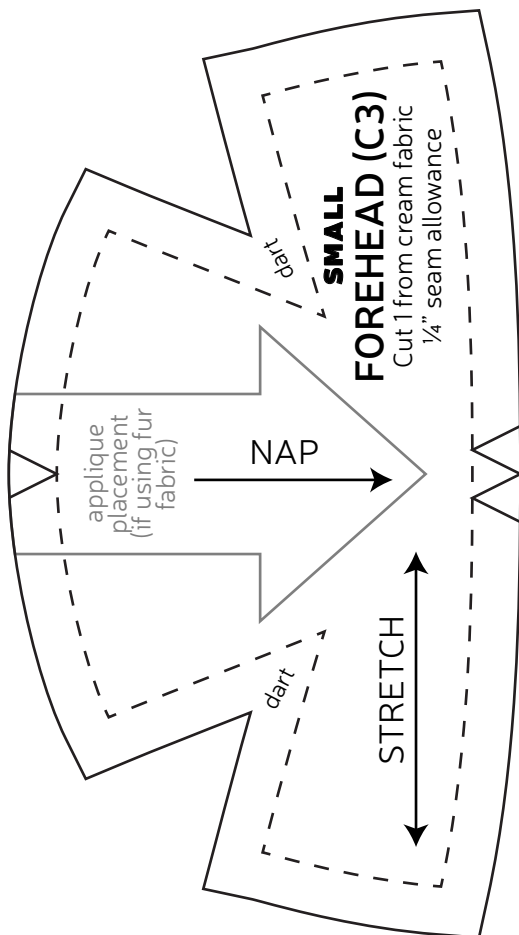
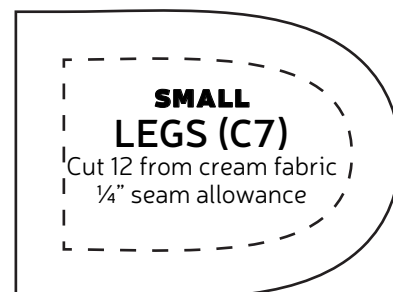
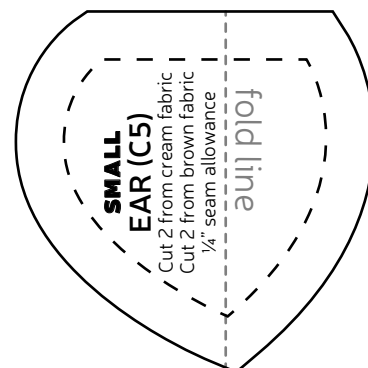
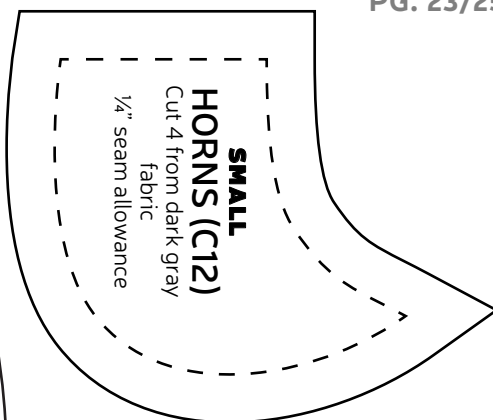
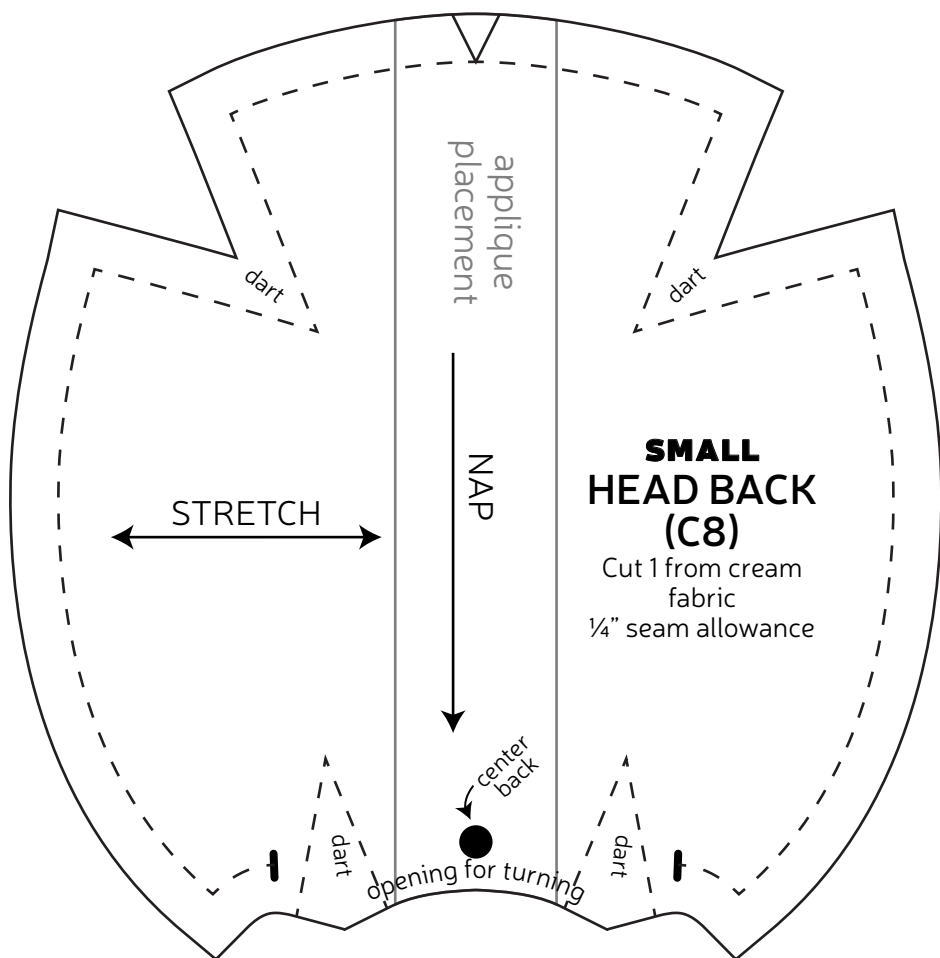




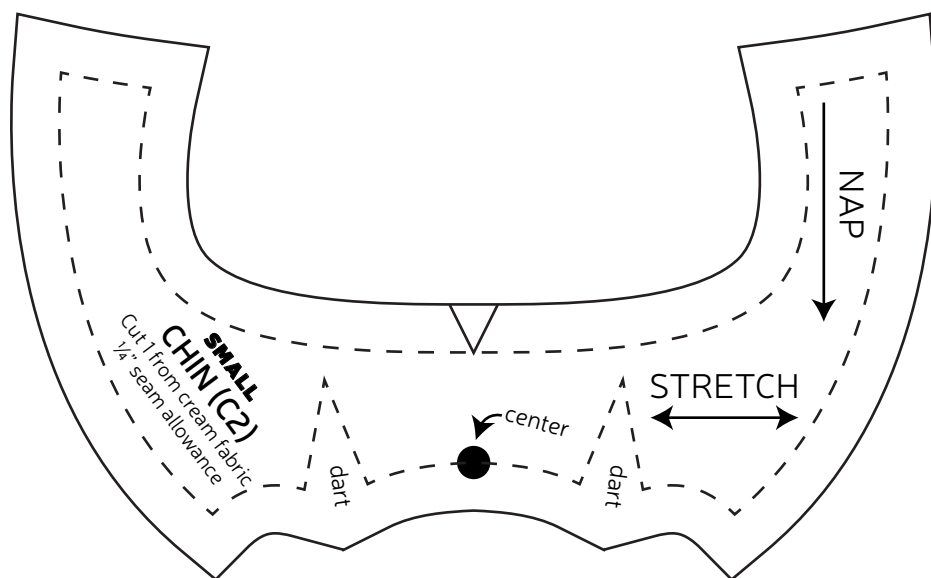
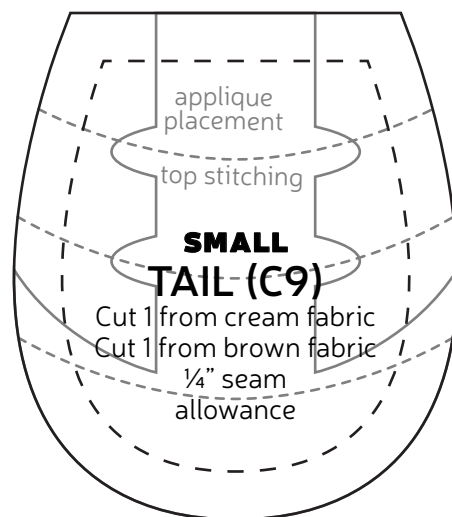
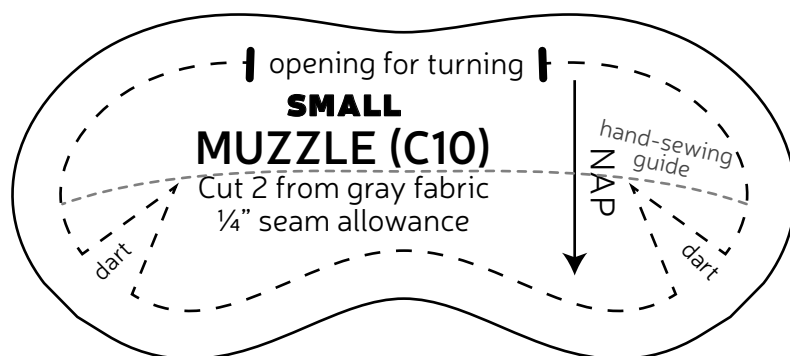
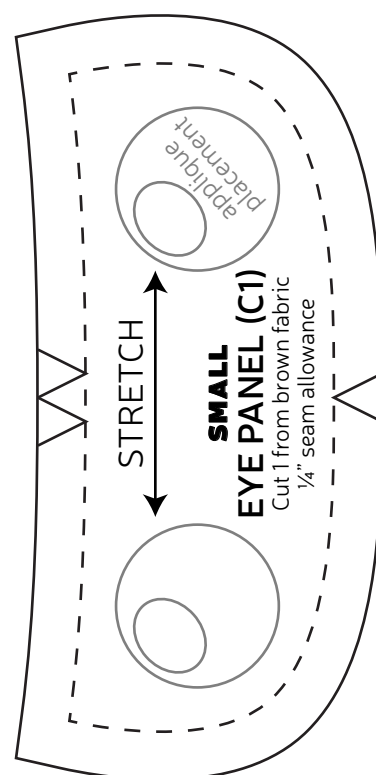
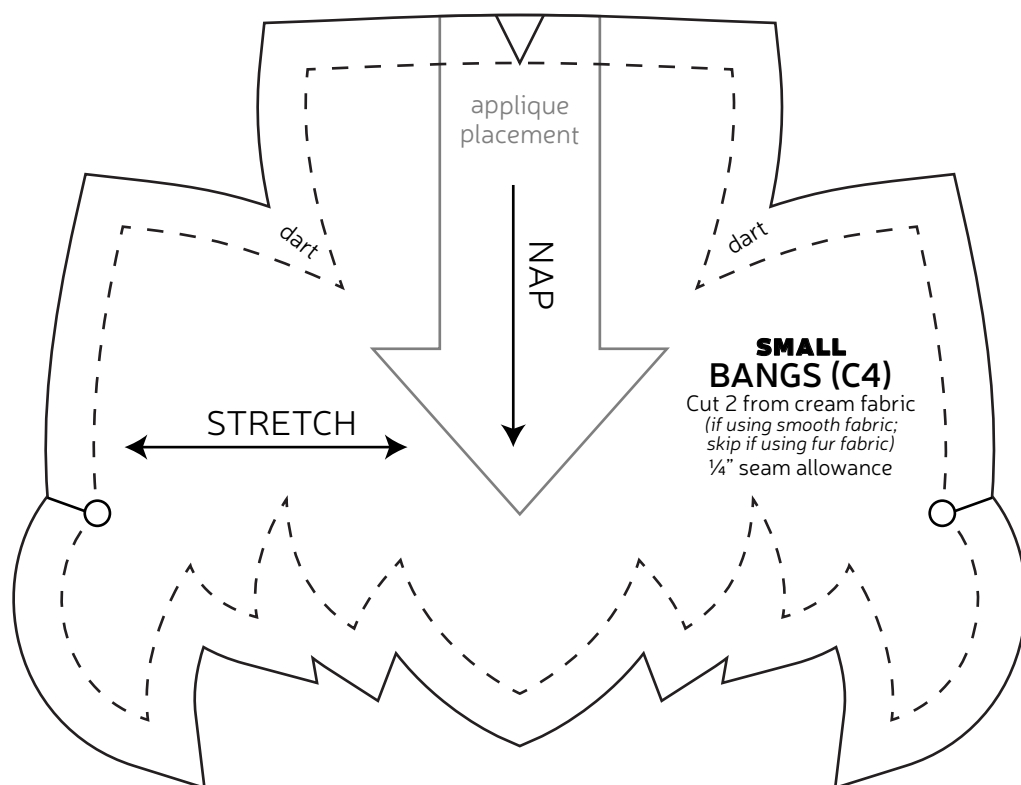








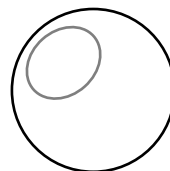




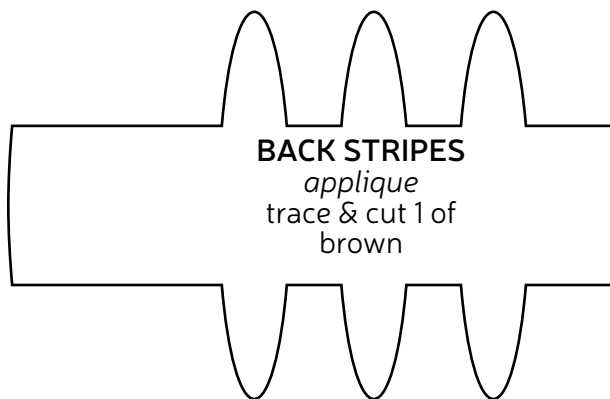


**EYE SHINE**  
*aplique*  
 trace & cut  
 2 of white

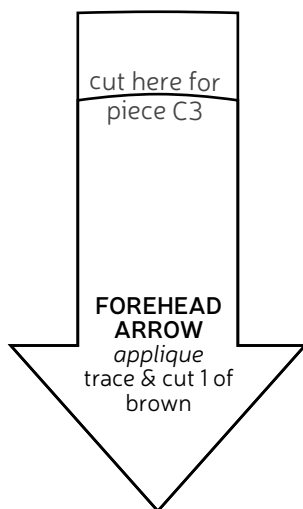
**EYE**  
*aplique*  
 trace & cut  
 2 of black



**HEAD BACK STRIPE**  
*aplique*  
 trace & cut 1 of  
 brown

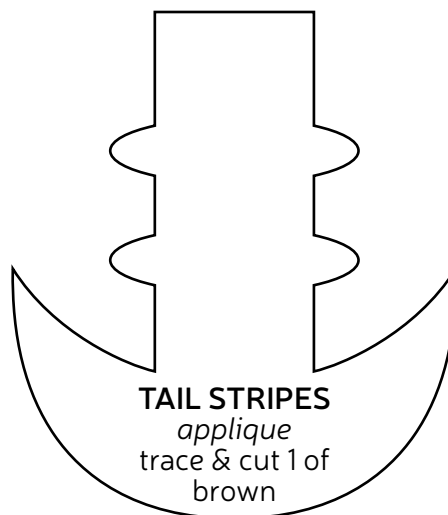


**BACK STRIPES**  
*aplique*  
 trace & cut 1 of  
 brown



cut here for  
 piece C3

**FOREHEAD ARROW**  
*aplique*  
 trace & cut 1 of  
 brown



**TAIL STRIPES**  
*aplique*  
 trace & cut 1 of  
 brown