



# bat plush

A SEWING PATTERN BY



# bat plush

Whether you're gearing up for Halloween or are just a fan of bats in general, these plush cuties are a fun and easy project to sew up and cuddle. With big oversized ears and wings and cute faces to add, it's fun to watch these little flyers come to life as you put them together.

## DIFFICULTY:



This plush has four major parts, but placing them together correctly is important. The most difficult parts of the project are likely squeezing the large wings into the tiny body, and attaching the head.

## SKILLS USED:

- Curved sewing
- Darts
- Fusible web applique
- Ladder stitch
- Basting
- Top stitching

## MAKES:

One plush, about 6" wide (15" if you include wingspan) by 10" tall (12" if you include ears)



# bat plush

## SEWING TUTORIAL

### materials & tools:

- ¼ yd. of main color fabric (for body)
- ⅛ yd. of accent color fabric (for inner ears)
- 4" x 4" piece of black applique fabric (felt, cotton, etc.) for eyes and/or mouth
- 3" x 3" piece of pink applique fabric (felt, cotton, etc.) for nose and/or blush marks
- 2" x 2" piece of white applique fabric (felt, cotton, etc.) for fangs and eye shines
- 5" x 5" piece of light or heavy duty fusible web
- sewing thread to match main fabric and applique fabrics
- poly-fil stuffing
- basic sewing tools (sewing machine, scissors, iron, needles, pins, fabric marker, seam ripper)



### SUGGESTED FABRICS:

Plush, stretchy fabrics such as fleece or minky are suggested. The variations of fleece and minky mentioned to the right would work well, but really any plushy fabric with a bit of stretch on the crosswise grain would be well-suited.

Non-stretch fabrics like felt, cotton, or flannel would also work, but the result might not look as rounded and soft. You can likely achieve the same effect if you stuff the body very full.

faux fur

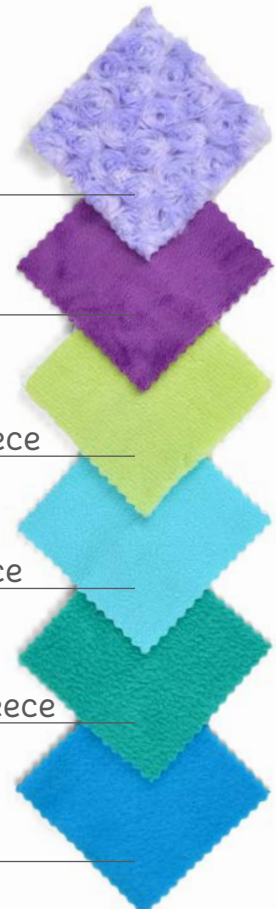
minky

cuddle fleece

micro fleece

anti-pill fleece

fleece



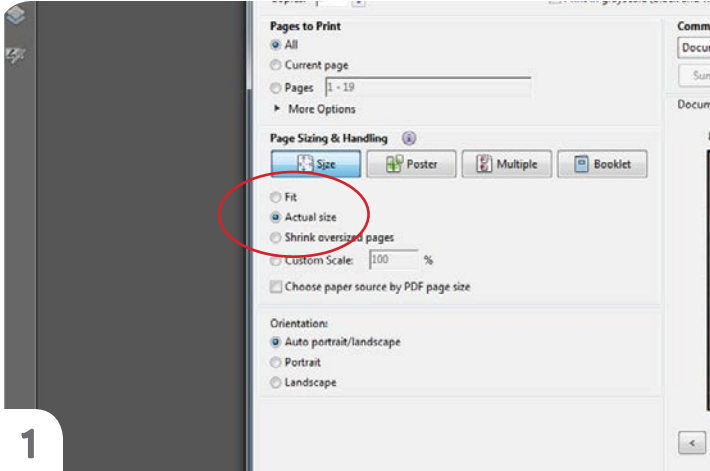
sew desu ne?

| [WWW.CHOLYKNIGHT.COM](http://WWW.CHOLYKNIGHT.COM) |

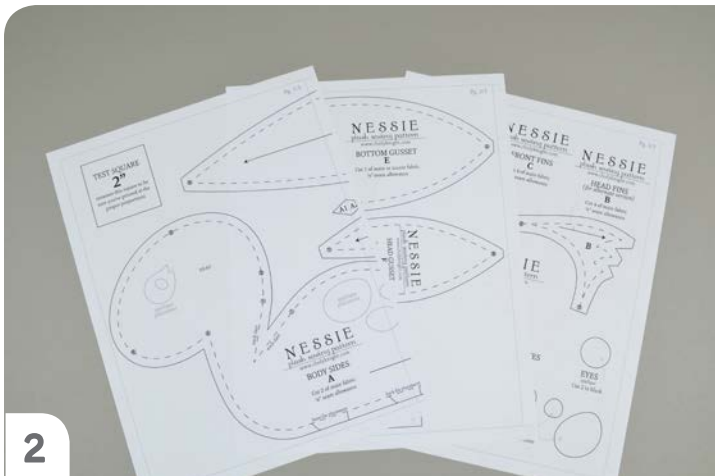


## printing the pattern:

To print the pattern, set your computer to print **PAGES 13-14**. If you're unfamiliar with printing and assembling a .pdf pattern, read the steps below.



At the print dialog box, check the box that says print at “Actual Size” or 100%. Any other selection (such as “Fit to page”) will distort the pattern so it's slightly larger or smaller and we don't want that.

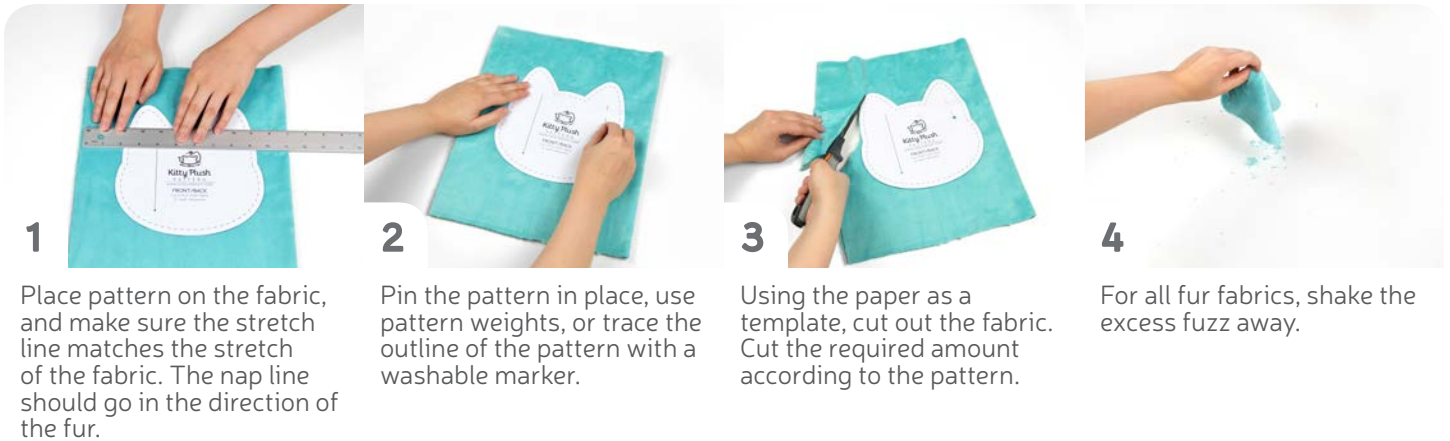


Print the pages needed for the file. You might have one or more. Either way, be sure you have the full collection by noting the page numbers in the corner.

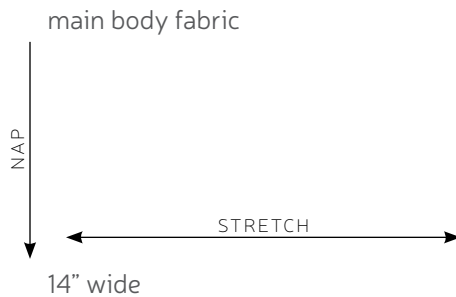


You can trace the patterns onto a different paper, or you can also just cut them straight from the printer paper. They might be a little hard to pin through, so you might want to use your longest pins. But you could also use pattern weights or trace the outlines onto the fabric with a washable marker and cut them out from there.

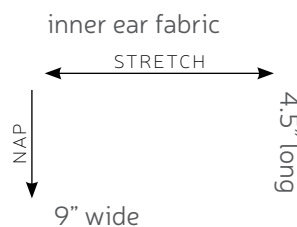
## cutting the fabric:



## cutting layout:



¼ yd. of fabric; 9" long



## BEFORE YOU BEGIN:

- Briefly read the project instructions so you know what to expect.
- If desired, mark the cut fabric pieces with the markings and symbols from the pattern. Or wait until the applicable step before transferring.
- Note that the seam allowance used is ¼" throughout the project.

# bat plush

## SEWING TUTORIAL



### 1. PREPARE THE APPLIQUE

- Take your fusible web and trace the all your applique pieces onto the smooth (paper) side. Choose the face you want from the facial features available: two eyes, eye shines, a mouth, nose, fangs, and blush marks as desired.
- Fuse all the pieces to the wrong side of your appropriate applique fabrics.
- Cut out the face pieces and arrange them on one of the front/back head (A) pieces. You can do this by setting your paper pattern on top of the fabric piece (right sides up), align the eyes on top where the placement markings are, then carefully pull the paper pattern away while holding the applique piece in place.



### 2. FUSE AND SEW THE APPLIQUE

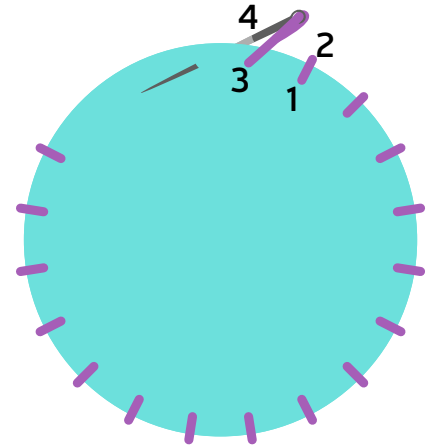
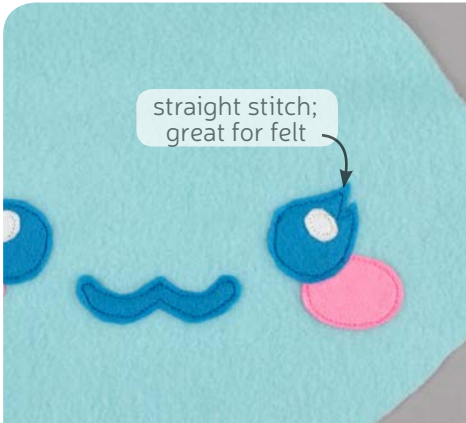
- Fuse the face pieces in place with your iron (use a press cloth -- such as a scrap piece of cotton -- if you're using a polyester or fur fabric like minky).
- If you used heavy duty fusible web, you can keep the pieces fused without sewing, or you can sew them in place a number of ways. I've used a zigzag stitch here.
- Refer to the next step for some other applique options.
- This piece will now be the front of your head, and the other blank piece will be the back.

#### tip:

For ease, you could also use safety eyes and noses instead of appliqueing the features.

# bat plush

## SEWING TUTORIAL



### 2a. OTHER APPLIQUE OPTIONS

Other good options for applique include a straight stitch, which involves sewing around the edge of the applique pieces with a straight stitch using matching thread -- about  $\frac{1}{8}$ " in from the edge.

You can also applique by hand; I prefer a whipstitch. Thread a hand-sewing needle with some matching thread and knot it. Bring the thread up from the back of the project; about  $\frac{1}{8}$ " in from the edge of the applique shape. Bring it down perpendicular from the curve, just outside of the applique shape. This completes one stitch.

For the next stitch, bring the needle back up about  $\frac{1}{8}$ " away from the previous stitch and  $\frac{1}{8}$ " in from the edge just as in the first stitch. Once again, bring it down just outside the applique shape. Continue this way until you've sewn around the shape.



### 3. SEW THE HEAD DARTS

- Take your head front piece and note the top and bottom triangle notches, these will later become darts in the head. Fold the head piece in half length-wise along the points of each of the darts. Match up the legs of the darts.
- Sew the darts by starting at the opening and working down to the point. For the best results, gradually blend your seam into the fold of the fabric so it makes a smooth transition.

#### darts:

A wedge-shaped gap found in a pattern. When sewn in fabric, it creates a tuck in the fabric and develops a 3D shape. The diagonal sides of the wedge are the **LEGS**; these are matched up and sewn to the point or **APEX** of the dart.

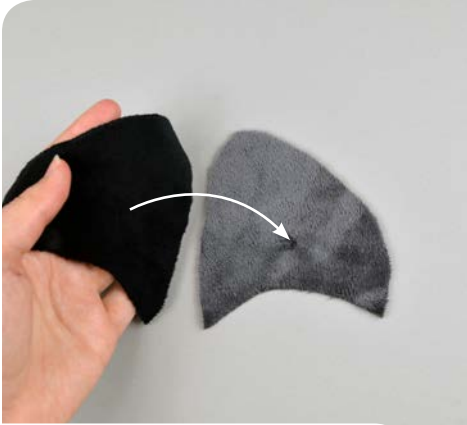
sew desu ne?

| [WWW.CHOLYKNIGHT.COM](http://WWW.CHOLYKNIGHT.COM) |



# bat plush

## SEWING TUTORIAL



### 4. SEW THE EARS

- Gather all four of your ear pieces (D). Take one of the outer ear and inner ear pieces and align them with right sides facing.
- Sew them together along the long curved edge, leaving the shorter curved edge free for turning right side out later.
- Turn it right side out and repeat with the remaining two ear pieces. When complete you should have a pair of ears that are mirror image of each other



### 5. BASTE THE EARS

- Locate the fold line from the ear paper pattern. Fold one of the ears along this fold line with inner ear sides facing. Baste the fold in place along the open edge of the ear to hold it still for the next step.
- If you haven't already, locate the ear placement lines from the head front/back paper pattern. Transfer them over to the right side of the head front. Align the ear within these lines, being sure that the folded edge is pointing toward the center of the head.
- Flip the ear down so the inner ear faces the head, then baste the ear in place within the seam allowance. Repeat with the second ear on the other side.



### basting:

A form of temporary sewing meant to hold pieces in place. A long stitch length is often used for this reason. The finished result is not meant to be seen and sometimes is even removed later (depending on your project).



# bat plush

## SEWING TUTORIAL



### 6. SEW THE HEAD

- If you haven't already, locate the opening for turning marks located on the head front/back paper pattern. Transfer them over to the wrong side of the head back piece.
- Align the head back piece with the head front so the raw edges match up. The upper and lower darts you sewed in step 3 should also match up. Sew around the perimeter of the head, but be sure to leave an opening at the bottom as you marked previously.
- Turn the head right side out and set it aside for now.



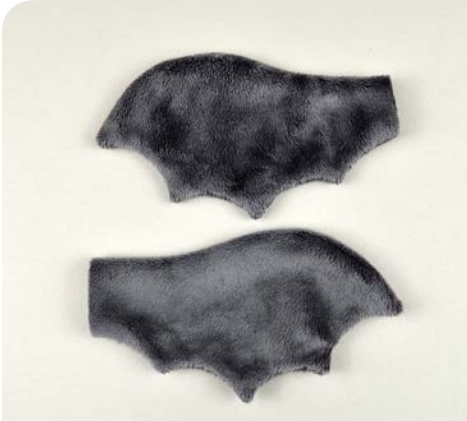
### 7. SEW THE WINGS

- Take two of your wing pieces (C) and align them with right sides facing.
- Sew around the pointed edges of the wing, leaving the short straight edge free for turning right side out.
- Once sewn, be sure to trim the excess seam allowance at the corners to reduce bulk. Clip into the seam allowance at the curves between the corners for more flexibility when turning.



# bat plush

## SEWING TUTORIAL



### 8. TOP STITCH THE WINGS

- Turn the wings right side out and define the corners with a chopstick or other similar blunt tool.
- The next part is kind of optional, but it adds a lot of detail to the plush. To add all the wing lines, begin by transferring the guidelines over. I suggest trimming the paper pattern along the wing lines and using it as a template against the sewn wing. Transfer all four lines to both wings.
- Take the wing to your machine and top stitch along the drawn lines.

#### top stitching:

one or several lines of stitching done on the right side of a project to serve a decorative purpose



### 9. BASTE THE WINGS

- If you haven't already, locate the wing placement lines found on the body paper pattern (B). Transfer it over to the right side of one of the body fabric pieces. Gather up one of your wings and align the open end of the wing within these placement lines. Pin the wing in place.
- Baste the wing within the seam allowance. Repeat with the other wing on the other side of the body. Tuck the wings into the middle as best as you can.
- Grab your remaining body piece and align it with the body piece you've just sewn. Line up the raw edges, being sure that the wings are tucked in the middle. Pin the edges in place.

sew desu ne?

| WWW.CHOLYKNIGHT.COM |

// ©2016 Choly Knight // Items made using this pattern may be sold. Credit to "Choly Knight" or "Sew Desu Ne?" is appreciated.  
You may not reproduce, share, freely distribute, or sell this pattern as your own in digital or printed form.

# bat plush

## SEWING TUTORIAL



### 10. SEW THE BODY

- Sew around the perimeter of the body, except for the short straight edge found near the top. This is the neck and you'll need to leave it open for turning later.
- Once sewn, revisit the corners between the body and the legs. Trim into the seam allowances at these corners so the body has more flexibility when turned.
- Turn the body right side out through the opening in the neck. Stuff it semi-firmly with stuffing, being sure to use small balls at the legs so they're stuffed first. Then stuff the rest of the body. For the next step, shove the body stuffing towards the bottom so it doesn't get in the way.



### 11. SEW THE BODY TO THE HEAD

- If you haven't already, locate the neck placement seam on the head front/back paper pattern. It's located inside the opening for turning markings. Transfer it over to the right side of the head front side. Align the stuffed body between these placement lines and pin it in place.
- Sew the body to the head front following these placement lines. Be sure it's only sewn to the head front, not the head back.
- Once sewn, stuff the head firmly with stuffing.

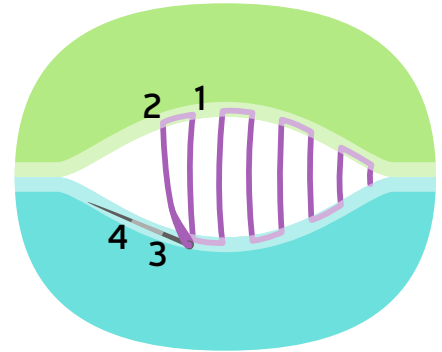
sew desu ne?

| [WWW.CHOLYKNIGHT.COM](http://WWW.CHOLYKNIGHT.COM) |



# bat plush

## SEWING TUTORIAL



### 12. SEW THE HEAD CLOSED

- Thread a hand sewing needle with matching thread and knot the end. Insert the needle into the opening of the head near one end. Bring the needle out so the knot is now hidden within the plush. Tuck under the seam allowance of the head opening -- the side without the body attached.
- Continue from here doing a ladder stitch. Take a  $\frac{1}{8}$ " stitch into the fold on one side of the head, then go across and take a stitch into the body of the plush ( $\frac{1}{4}$ " from the edge for the seam allowance). Keep going down the opening until you reach the end.



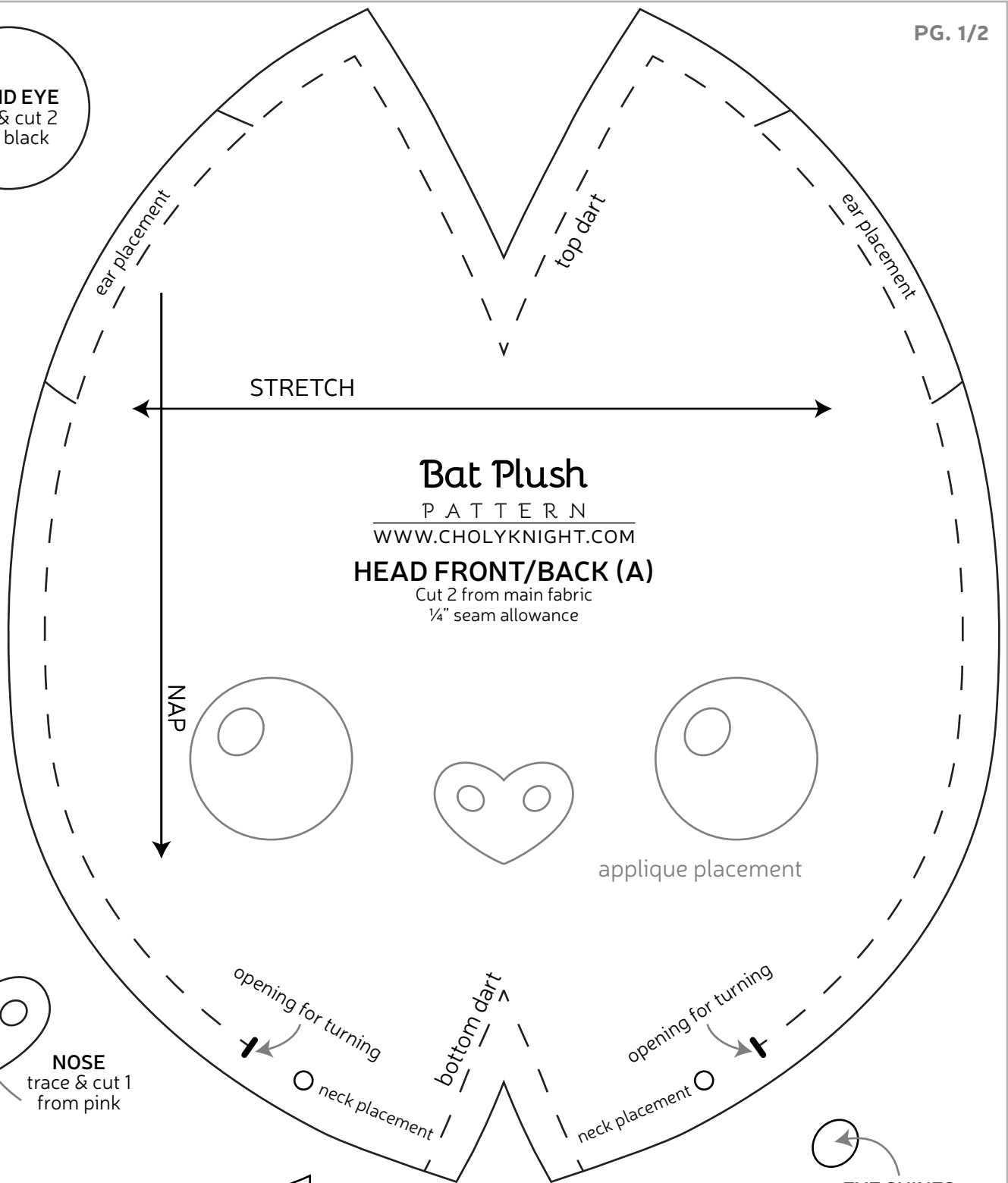
### 13. FINISH THE PLUSH

- When you're finished, stitch a knot into the end. Then insert the needle near the finished knot and out of the plush about 1-2" away.
- Pull the thread through and hold it taut while snipping the thread. The excess thread should sink back inside the plush -- all hidden!





**ROUND EYE**  
trace & cut 2  
from black



## Bat Plush

P A T T E R N

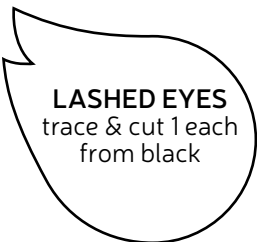
WWW.CHOLYKNIGHT.COM

### HEAD FRONT/BACK (A)

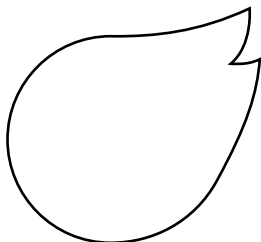
Cut 2 from main fabric  
1/4" seam allowance



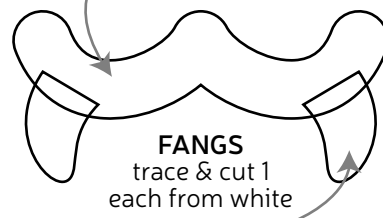
**NOSE**  
trace & cut 1  
from pink



**LASHED EYES**  
trace & cut 1 each  
from black

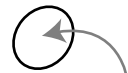


**BLUSH**  
trace & cut 2  
from pink



**SMILE**  
trace & cut 1  
from black

**FANGS**  
trace & cut 1  
each from white



**EYE SHINES**  
trace & cut 2  
from white

