

GIRAFFE PLUSH



A FREE SEWING PATTERN BY



GIRAFFE PLUSH

This tiny giraffe fits a whole lot of cute into a small package! It features a long neck but still maintains stubby legs as well as a short snout for an extra adorable look. What really pulls it together are the fun spots. Not to mention the two ossicones -- the horn-like structures on the top of its head.

Because of all the fun details, it looks especially great in classic colors like yellow, brown, and rust, or bright and fun colors that really make those spots pop!

DIFFICULTY:



The hardest part of this plush is likely sewing the tiny legs into the body. They require a good bit of pivoting. So be sure to stop frequently with your needle in the fabric before turning in new directions.

SKILLS USED:

- Fusible web applique
- Curved sewing
- Basting
- Darts
- Ladder stitch
- Sewing small pieces
- Matching notches and points

MAKES:

One plush: about 8½" tall (10" if you include horns), 6" long from muzzle to back of body, and about 4" wide from each side of the head



sew desu ne?

| WWW.CHOLYKNIGHT.COM |

materials & tools:

- ¼ yd. of fabric for main body
- ⅛ yd. of dark accent fabric for horns & hooves
- ⅛ yd. of light accent fabric for inner ears and muzzle
- 5" x 7" piece of scrap fabric for poly pellet pouch
- 3" x 3" piece of black applique fabric (flannel, felt, fleece, cotton, etc.) for eyes and nostrils
- 2" x 2" piece of accent applique fabric for eye highlights
- 2" x 2" piece of white applique fabric for eye shines
- 5" x 5" piece of accent applique fabric for spots
- 6" x 6" piece of light or heavy duty fusible web
- sewing thread to match main fabric and applique fabrics
- poly-fil stuffing
- poly pellets
- spoon or funnel for filling poly pellets
- basic sewing tools (sewing machine, scissors, iron, needles, pins, fabric marker, seam ripper)



SUGGESTED FABRICS:

Plush, stretchy fabrics such as fleece or minky are suggested. The variations of fleece and minky mentioned to the left would work well, but really any plushy fabric with a bit of stretch on the crosswise grain would be well-suited.

Stretch fabrics like **FLEECE** or **MINKY** will create a more squat, round shape when stuffed.

Non-stretchy fabrics, like **FELT** or **COTTON**, won't stretch when stuffed so the resulting plush will look elongated as shown.

MINKY

VS.

FELT

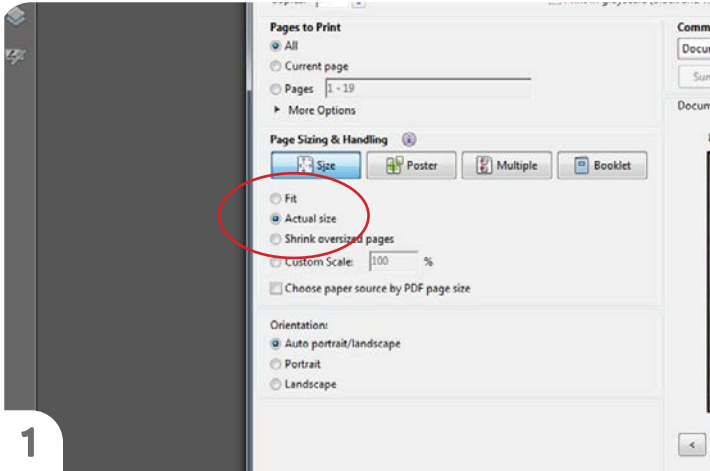


sew desu ne?

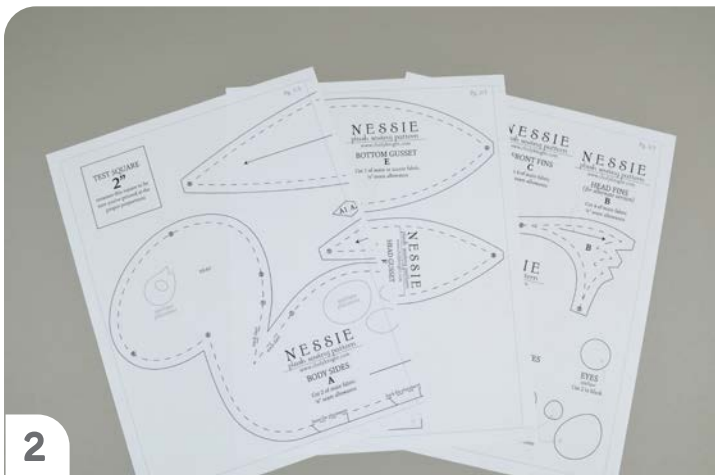
| WWW.CHOLYKNIGHT.COM |

printing the pattern:

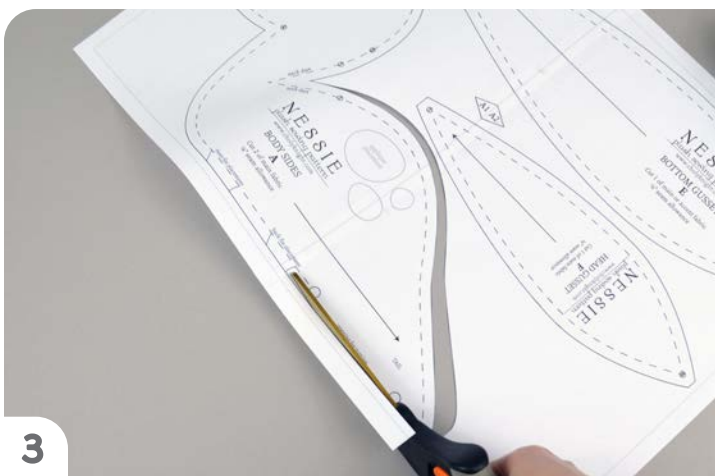
To print the pattern, set your computer to print **PAGES 24-26**. If you're unfamiliar with printing and assembling a .pdf pattern, read the steps below.



At the print dialog box, check the box that says print at “Actual Size” or 100%. Any other selection (such as “Fit to page”) will distort the pattern so it's slightly larger or smaller and we don't want that.



Print the pages needed for the file. You might have one or more. Either way, be sure you have the full collection by noting the page numbers in the corner.

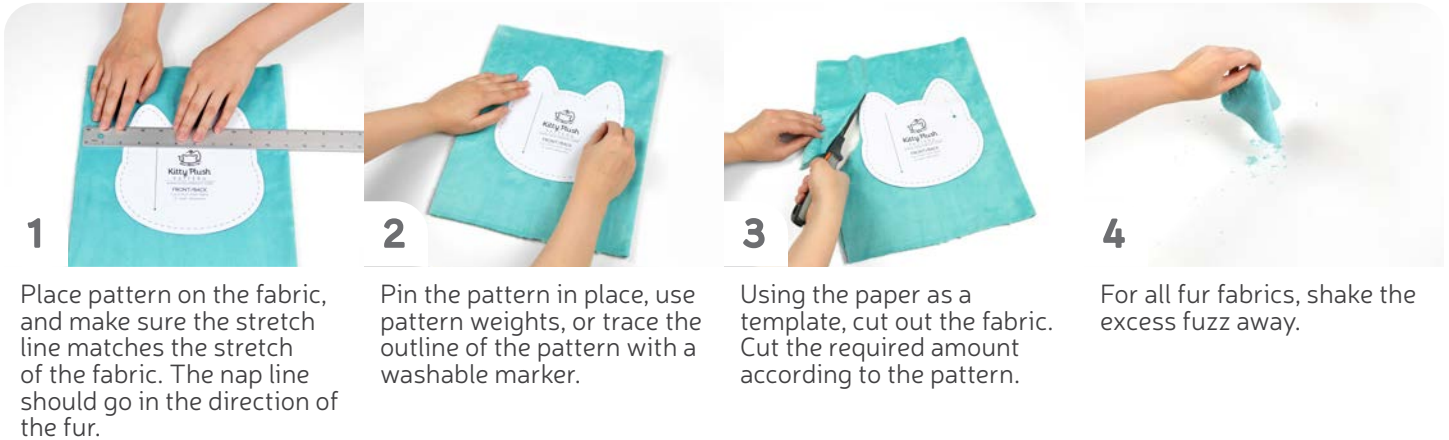


You can trace the patterns onto a different paper, or you can also just cut them straight from the printer paper. They might be a little hard to pin through, so you might want to use your longest pins. But you could also use pattern weights or trace the outlines onto the fabric with a washable marker and cut them out from there.

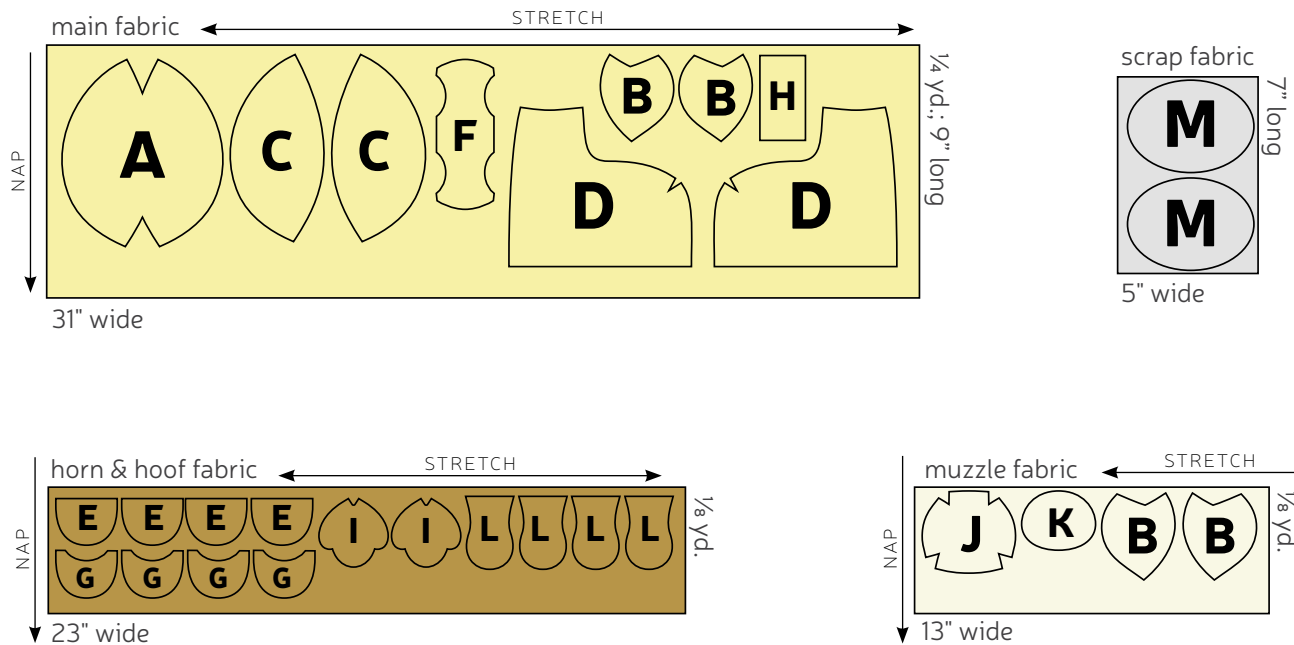
sew desu ne?

| WWW.CHOLYKNIGHT.COM |

cutting the fabric:



cutting layout:



BEFORE YOU BEGIN:

- Briefly read the project instructions so you know what to expect.
- If desired, mark the cut fabric pieces with the markings and symbols from the pattern. Or wait until the applicable step before transferring.
- Note that a 1/4" seam allowance is used throughout the project.

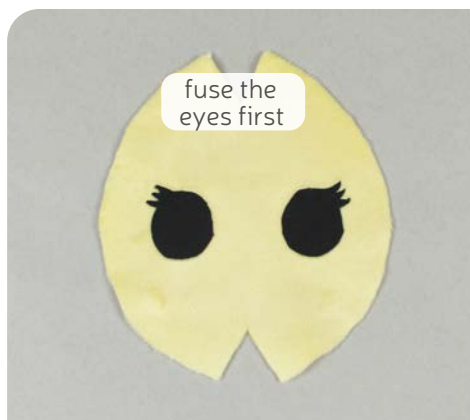
sew desu ne?

| WWW.CHOLYKNIGHT.COM |



1. PREPARE THE FACE APPLIQUE

- Grab your fusible web and trace all the applique pieces you want onto the smooth (paper) side. You should have at least two **eyes**, and two **eye shines**. The amount of **spots** is up to you, but about 4-6 for each side of the body is recommended. You can also add **eye highlights**.
- Fuse the bumpy (adhesive) side onto the wrong side of your applique fabric. The **eyes** should go on black, the **eye shines** on white, and the **spots** on an accent color.
- Cut out the face pieces and grab your **HEAD FRONT (A)** piece. Set your paper pattern on top of the fabric piece (right sides up). Align the **eye** piece on top where the placement markings are. Then carefully slide the paper pattern away while holding the applique piece in place.



2. FUSE THE APPLIQUE

- Fuse the **eyes** in place with your iron. Use a press cloth if you're using a polyester or fuzzy fabric like minky. A scrap piece of cotton works as a press cloth, and will help prevent the fabric from melting.
- Next, move onto the smaller pieces: the **eye shines** and **highlights**. Fuse them the same way as you did the **eyes**, using the paper pattern and photos as a guide.
- Finally, add the **spots** (if using). A few above and below each eye looks especially nice. If you used heavy duty fusible web, you can keep the pieces fused without sewing, or you can sew them in place a number of ways. I've used a zigzag stitch here.

→ Refer to the next step for some other applique options.

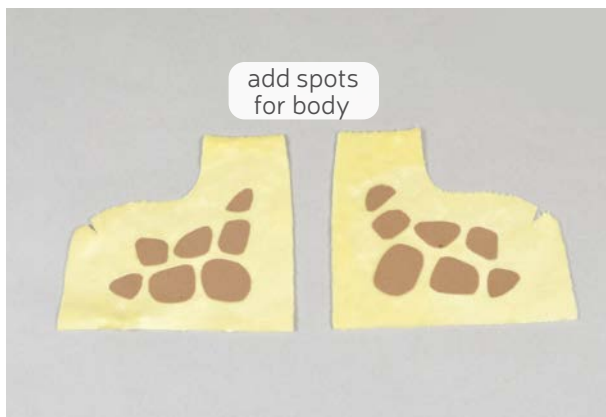
sew desu ne?

| WWW.CHOLYKNIGHT.COM |

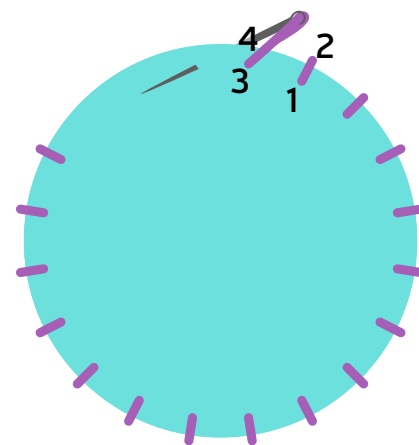
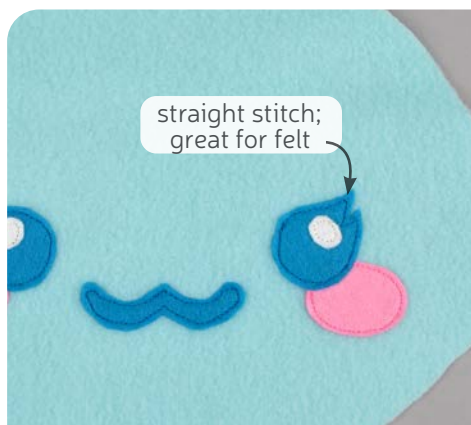
a. Repeat steps 1-2 with your remaining applique pieces for the rest of the giraffe, including spots for the **BODY** (D).

b. And nostrils for the **MUZZLE** (K).

→ *Refer to the next step for some other applique options.*



3. APPLIQUE THE REMAINING PIECES



3a. OTHER APPLIQUE OPTIONS

- Other good options for applique include a straight stitch, which involves sewing around the edge of the applique pieces with a straight stitch using matching thread -- about 1/8" in from the edge.
- You can also applique by hand; I prefer a whipstitch. Thread a hand-sewing needle with some matching thread and knot it. Bring the thread up from the back of the project; about 1/8" in from the edge of the applique shape. Bring it down perpendicular from the curve, just outside of the applique shape. This completes one stitch.
- For the next stitch, bring the needle back up about 1/8" away from the previous stitch and 1/8" in from the edge just as in the first stitch. Once again, bring it down just outside the applique shape. Continue this way until you've sewn around the shape.

sew desu ne?

| WWW.CHOLYKNIGHT.COM |

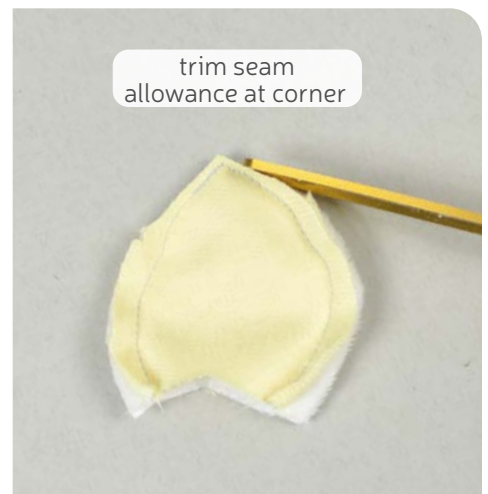
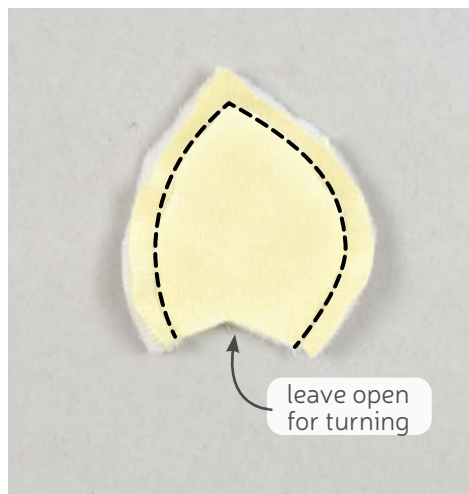
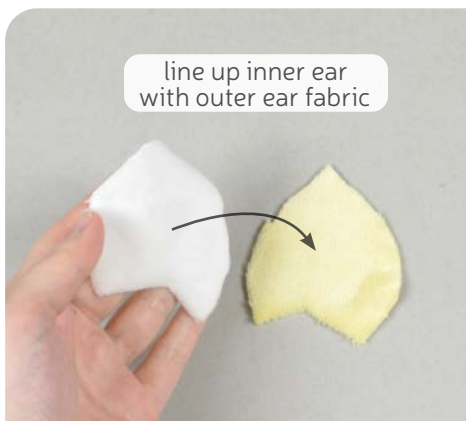


4. SEW THE HEAD FRONT DARTS

- Grab your **HEAD FRONT** piece (A). The wedge shapes along the top and bottom of the head are **darts**. We'll be sewing them first by folding the head front along the point of the **darts**. This should make the slanted edges match up.
- Sew the **dart** by starting at the opening and work down to the fold of the fabric. Try to blend your stitching into the fold as close as possible for a smooth transition and a rounder finish. Repeat with both **darts** along the top and the bottom.
- Open up the piece when complete.

DARTS:

A wedge-shaped gap found in a pattern. When sewn in fabric, it creates a tuck in the fabric and develops a 3D shape. The diagonal sides of the wedge are the **LEGS**; these are matched up and sewn to the **POINT** of the dart.

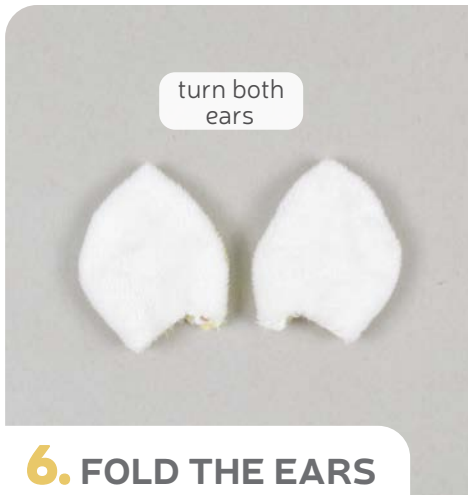


5. SEW THE EARS

- Grab your **EAR** pieces (B). Take one from main fabric and one from inner ear fabric. Align them with right sides facing and raw edges matching up.
- Sew them together along the outer curved edges. The short straight edges should be left open for turning the ear later.
- Trim the excess seam allowance at the tip of the ear to reduce bulk when the ear is turned next. Repeat with your remaining ear pieces for two ears total.

sew desu ne?

| WWW.CHOLYKNIGHT.COM |



6. FOLD THE EARS

- Turn the **EARS** (B) right side out.
- Take your finished ear and fold it with the inner ear fabrics facing. Use the **fold line guide** found on the paper pattern for extra help.
- Baste the ear along the open edge to hold the fold in place. Repeat with the other ear for 2 ears total.

BASTING:

A form of temporary sewing meant to hold pieces in place. A long stitch length is often used for this reason. The finished result is not meant to be seen and sometimes is even removed later (depending on your project).

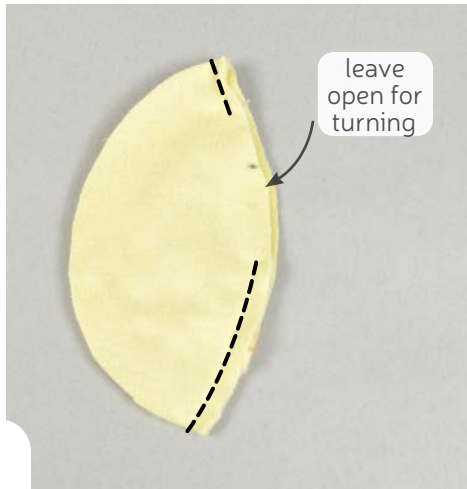
- Grab your head front so far. If you haven't already, locate the **ear placement lines** found on the paper pattern for the **HEAD FRONT** (A). Align the open edge of the ear within these lines so the inner ear fabric faces up and ear folds point up.
- Next, flip the ears inward so the inner ear fabrics are now facing down. Baste the ears to the side of the head front within the seam allowance to hold them for future steps.



7. BASTE THE EARS

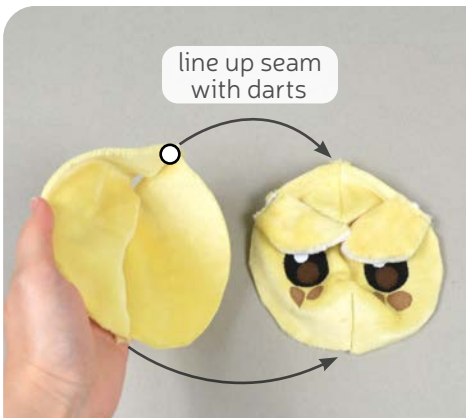
sew desu ne?

| WWW.CHOLYKNIGHT.COM |



8. SEW THE HEAD BACK

- Grab your **HEAD BACK** pieces (C). Align them with right sides facing and raw edges matching up.
- If you haven't already, locate the **opening for turning markings** found on the paper pattern for the head back. Transfer them over to the wrong side of the fabric. Sew the head back pieces together along this edge, but leave an **opening for turning** in the middle.
- Open up the pieces when complete.

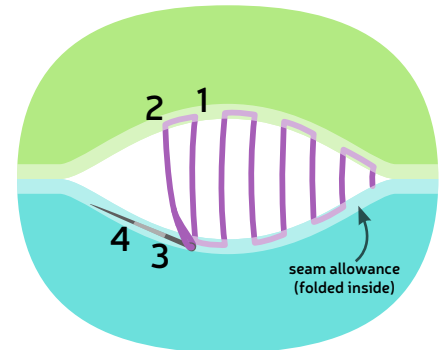


9. SEW THE HEAD

- Grab both your **HEAD FRONT** and **BACK** pieces. Make sure both **EARS** are tucked inside the head front, then align it with the head back so right sides are facing. The head back **center seam** should align with the head front **darts**. There's also a **circle marking** on the head back to help indicate the **top**.
- Sew the head front to the back all the way around the shape.
- Turn the head right side out through the opening in the back of the head.

sew desu ne?

| WWW.CHOLYKNIGHT.COM |

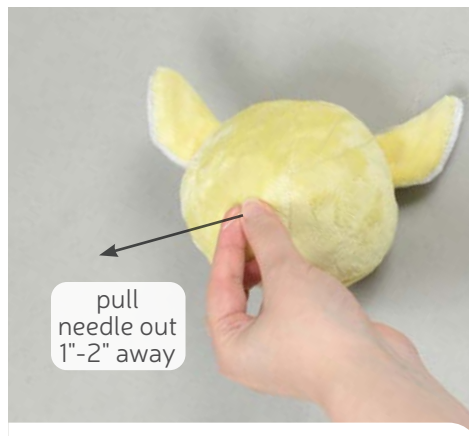


10. STUFF & CLOSE THE HEAD

- Take your sewn head and stuff it firmly with stuffing. Be sure to get plenty of stuffing in the face and near the darts. There should be no wrinkles in the fabric when complete.
- Tuck the seam allowances from the opening inside and sew it closed with a ladder stitch. Take a 1/8" stitch into the fold of one side of the opening, then go across and take another. Keep going down the opening until you reach the end.

- When you're finished, stitch a knot into the end of the seam. Then insert the needle near the finished knot and out of the plush about 1-2" away.
- Pull the thread through and hold it taut while snipping the thread. The excess thread should sink back inside the plush -- all hidden!

→ ***This completes the head! Set it aside for a moment while we work on the body.***

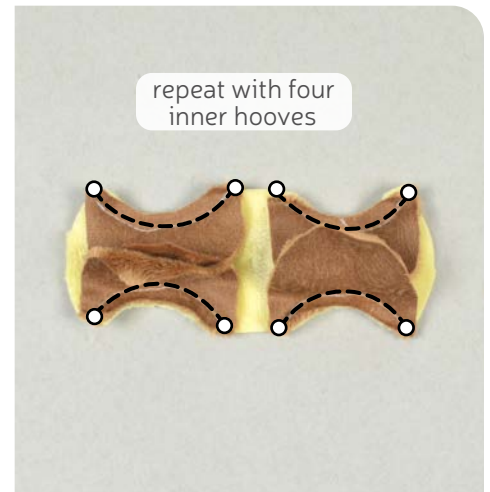
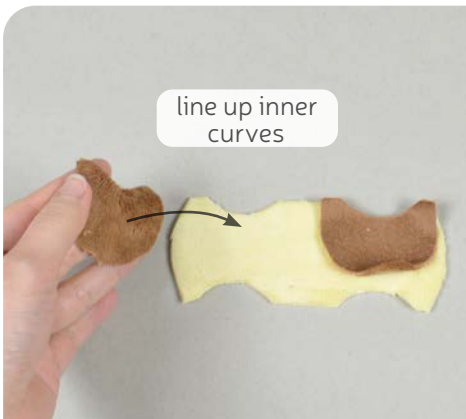


11. CLIP THE THREADS



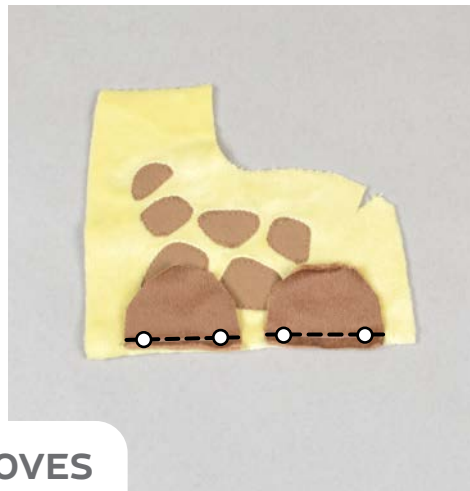
sew desu ne?

| WWW.CHOLYKNIGHT.COM |



12. SEW THE INNER HOOVES

- Grab your **BELLY** (F) and **INNER HOOF** pieces (G). Line up the short inner curves of both the inner hoof and belly pieces so right sides are facing. The curves are identical, so they should line up very easily.
- Sew the inner leg to the belly along just the inner curve. There are also **open circle markings** to line up at those points for extra help.
- Repeat with all four inner hoof pieces along all sides of the belly.



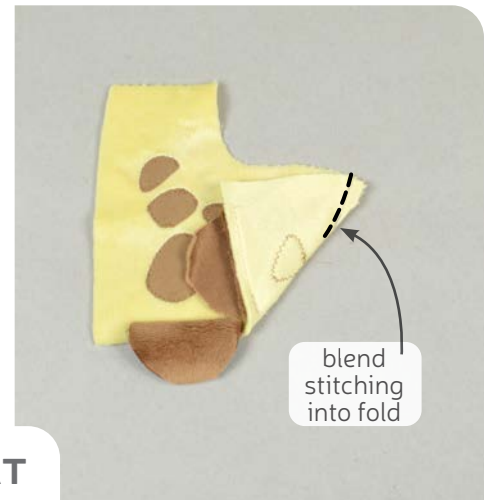
13. SEW THE OUTER HOOVES

- Grab your **BODY** (D) and **OUTER HOOF** pieces (E). If you haven't already, locate the **outer hoof placement lines** found on the paper pattern for the body. Use this as a guide for aligning the straight edge of your outer hoof along the bottom edge of your body piece. There are also **open circle markings** to line up at those points for extra help.
- Sew the outer hoof pieces to the bottom edge of the body. Repeat with your remaining two outer hoof pieces and your other body piece for two sides of the giraffe.
- When you open up the pieces, they should look something like the third photo.

sew desu ne?

| WWW.CHOLYKNIGHT.COM |

- a.** Note the small **dart** found in the corner of the **BODY** piece (D). Sew this the same as the **HEAD FRONT** (A) **dart**. Fold the body fabric along the point of the **dart** and match up the slanted lines with right sides of the fabric facing.
- b.** Sew from the opening of the dart down to the point, and try to blend the stitching into the fold of the fabric as best as you can. Repeat with your other body piece so each one has a finished dart.



14. SEW THE BODY DART



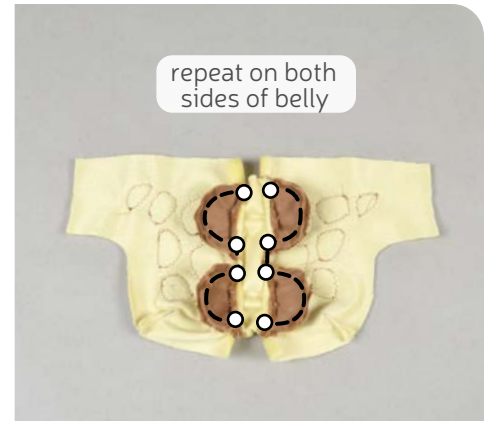
15. SEW THE BELLY TO THE BODY

- a.** Grab your **BELLY** piece so far and one of the **BODY** pieces. Align the **INNER HOOVES** with the **OUTER HOOVES** along the curved edges.
- b.** When the pieces are aligned, the seams from the previous two steps should match up at the corners. The **open circle markings** should match up as well.
- c.** Sew the inner hooves to the outer hooves along the curved edges, as well as the short space between them along the belly. You'll need to pivot at the corners to go around each curve. There will be some bulk here due to the previous seams, so take it slowly.

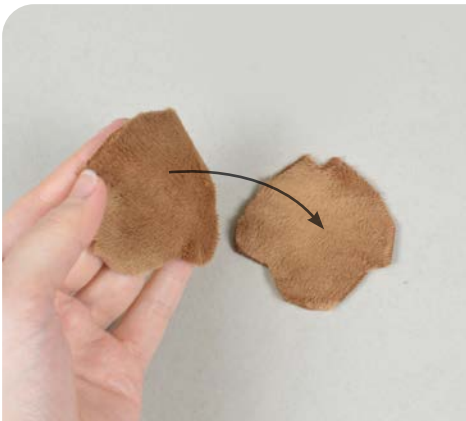
sew desu ne?

| WWW.CHOLYKNIGHT.COM |

- a. Repeat step 15 with the other side of your **BELLY** piece (F) and your remaining **BODY** piece (D). Sew the inner hooves to the outer hooves, going through the **circle markings**.
- b. When opened up the pieces should look something like the second photo.



16. SEW BOTH SIDES OF THE BELLY



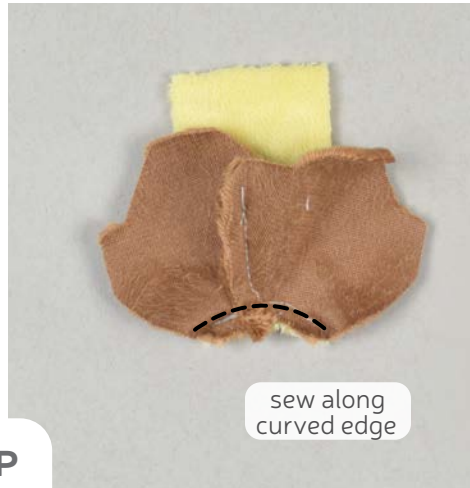
17. SEW THE TAIL TIP



- a. Grab your **TAIL TIP** pieces (I). Align them with right sides facing and raw edges matching up.
- b. Sew them together starting at the tight curve at the top, going along one edge on the side for about 1" (there's a guide on the paper pattern for help as well).
- c. Open up the tail pieces when complete, and the joined pieces should make a curve in the middle. This will be attached to the tail next.

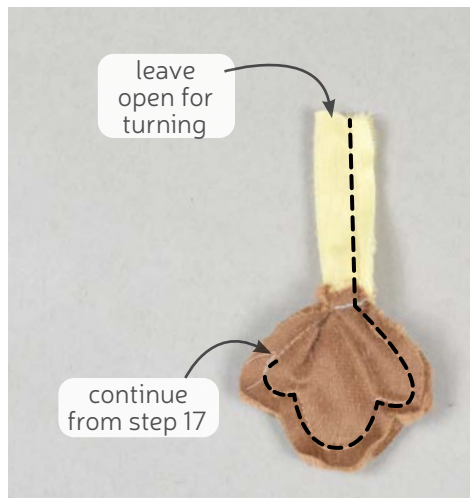
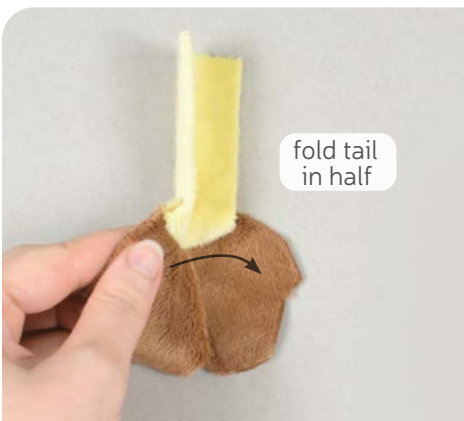
sew desu ne?

| WWW.CHOLYKNIGHT.COM |



18. ATTACH THE TAIL TIP

- Bend the curve of the **TAIL TIP** to fit around one short end of the **TAIL**.
- Sew the tail tip to the tail along this curved edge.
- Open up the pieces when complete.



19. SEW THE TAIL

- Take your tail so far and fold it in half so the **TAIL TIP** edges match up again and the **TAIL BASE** makes an even skinnier rectangle.
- Finish sewing the tail by starting where you left off on the tail tip in step 17. Sew around the rest of the tail tip, then down the tail base. Leave the short straight edge at the end open for turning the tail.
- Clip the seam allowance at the corners of the tail tip to reduce bulk and increase flexibility when the tail is turned right side out.

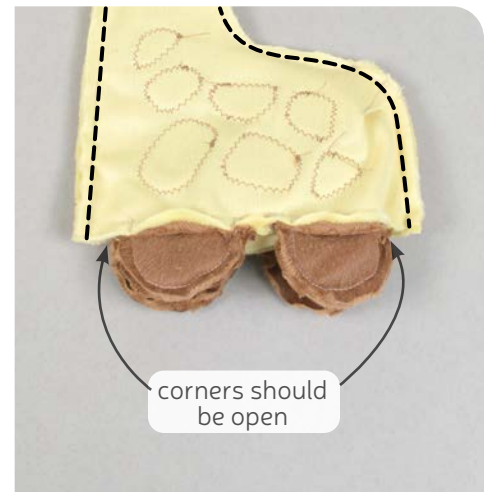
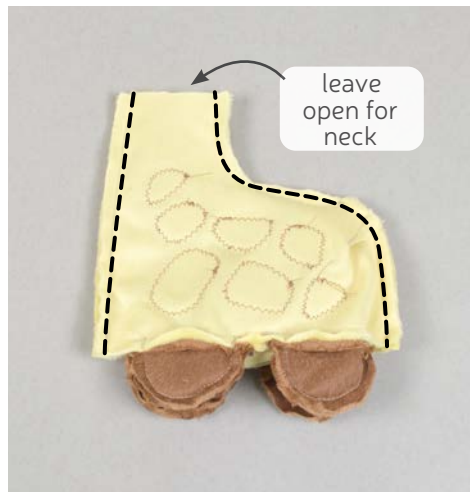
sew desu ne?

| WWW.CHOLYKNIGHT.COM |



20. BASTE THE TAIL

- Turn the **TAIL** right side out through the opening. Stuff the tail tip with stuffing so it puffs up. The base of the tail doesn't really need stuffing.
- Take your finished tail and align the open edge just above the dart on the **BODY** piece (D). Pin it in place.
- Baste the tail to the body above the **dart**.



21. SEW THE BODY

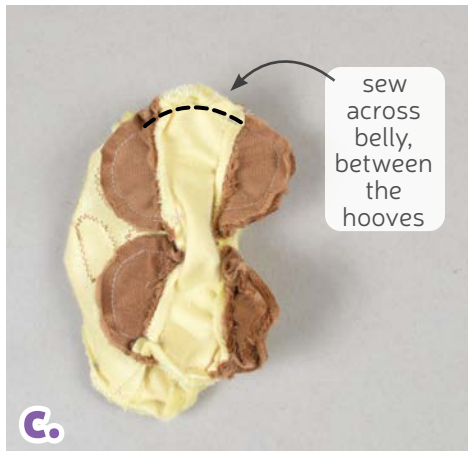
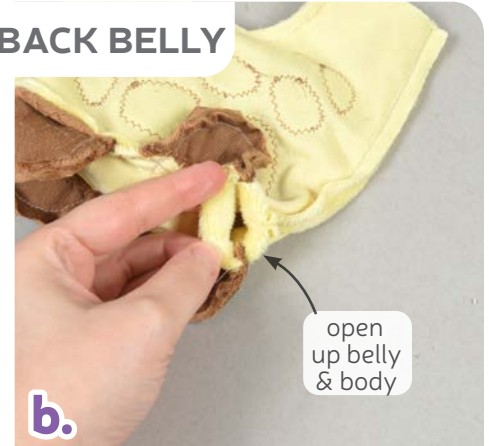
- Take each of your **BODY** pieces (D) and line them up so right sides are facing and raw edges match up.
- Next, sew just the front and back half of the body. This starts at the neck and goes straight down the front. Then sew again starting at the neck, around the dart and tail, and straight down the back. Leave the hooves completely alone for this step.
- When complete, this should leave an opening between the body and the belly at the corners.

sew desu ne?

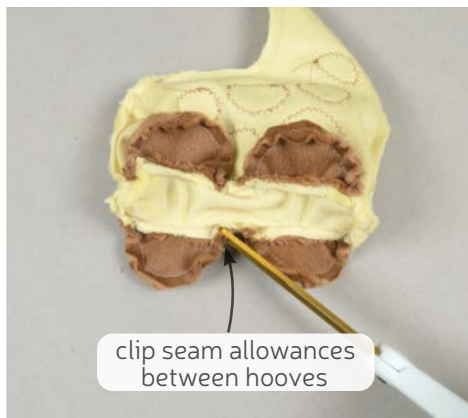
| WWW.CHOLYKNIGHT.COM |

- a.** Grab your giraffe's **BODY** so far at the corner you left open in the previous step. There should be a free edge from the **BELLY** and the **BODY** in between the **HOOVES**.
- b.** Open up the belly and body edges, then align them so right sides are facing and the raw edges match up.
- c.** Sew the body to the belly along the front of the body, going across the raw edges. You can even sew a little into the hooves to be sure there are no gaps.
- d.** Repeat on the other side for the back of the body.

22. SEW THE FRONT & BACK BELLY



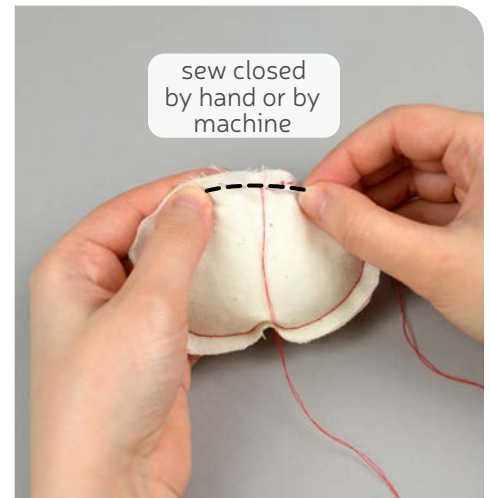
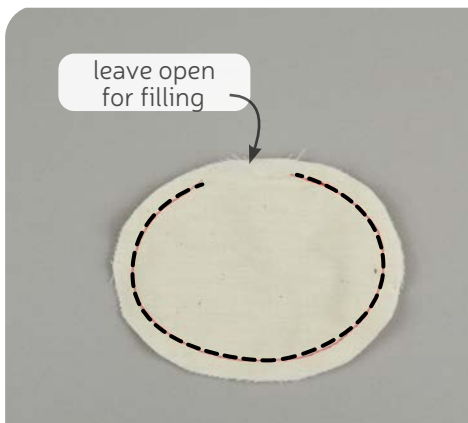
- a.** Before turning the body, be sure to clip the seam allowances at the tight corners. This includes between each hoof.
- b.** And also clip in the curve at the back of the neck. Turn the body right side out through the opening in the neck.



23. CLIP THE SEAM ALLOWANCES

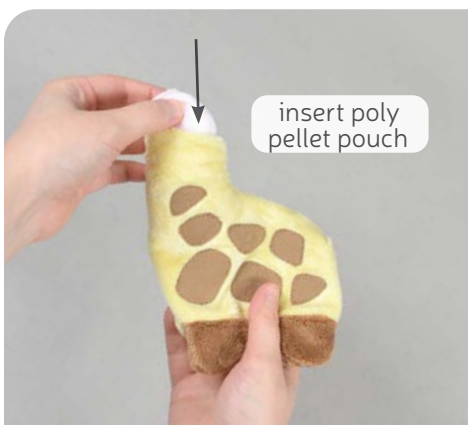
sew desu ne?

| WWW.CHOLYKNIGHT.COM |



24. SEW THE POLY PELLETT POUCH

- Grab your **POLY PELLETT POUCH** pieces (M) from your scrap fabric. Align the two pieces together with either side facing (doesn't matter). Sew the pieces together around the edge, leaving a 1-2" opening (also marked on the paper pattern) for filling the pouch.
- Get your poly pellets and a funnel (I prefer a spoon, but both work). Fill the pouch with poly pellets until it's not quite full.
- Stitch the pouch closed by hand using a back stitch for extra safety, or take it to your machine. Stitch it closed very slowly, using only the hand wheel if necessary. Sewing over a pellet will very likely break a needle.



25. STUFF THE BODY

- Stuff your **POLY PELLETT POUCH** (M) into the body of your giraffe through the neck.
- Push the pouch into the back half of your giraffe's body, just above the back legs.
- Stuff the back legs from beneath the pellet pouch. Be sure to get lots of stuffing so they're very firm; they need to support the weight of both the body and the head.

sew desu ne?

| WWW.CHOLYKNIGHT.COM |



26. CINCH THE NECK CLOSED

- Fill up the rest of the body with stuffing so there are no longer wrinkles in the fabric. Be sure both the back and front legs are very firm.
 - Thread a hand sewing needle and knot the end. Sew a gathering stitch around the opening of the neck.
 - Pull at the thread to cinch the neck opening closed. Be sure the neck feels firm when it's cinched closed. If not, sneak a few more bits of stuffing so it's sturdy and can support the head.
- When complete, sew a few knots into the middle to secure the neck closed. If you have a lot of thread leftover, you can keep it attached for securing the head next.

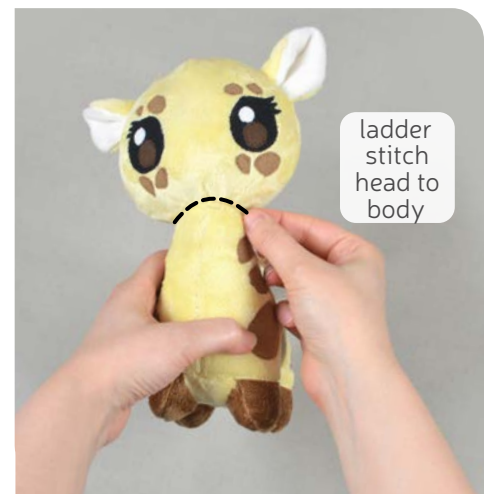
GATHERING:

The process of shortening the length of a piece of fabric by sewing long stitches through it. When the thread is pulled, it forms small folds that ruffle the fabric.

GATHERING STITCH:

A long version of the running stitch, which is a stitch done by weaving the needle in and out of a length of fabric going along a line. The long stitches (about $\frac{1}{4}$ "- $\frac{1}{2}$ " long) gather the fabric when pulled later.

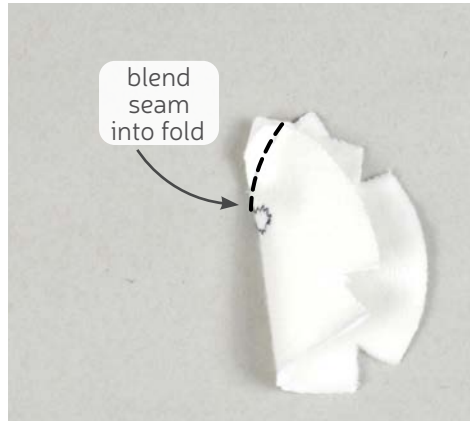
- Grab your sewn head from before. Align it over the neck of your giraffe so both pieces are facing forward.
- Ladder stitch the head to the neck. Sew a wide base around the head so it doesn't wobble.



27. ATTACH THE HEAD

sew desu ne?

| WWW.CHOLYKNIGHT.COM |

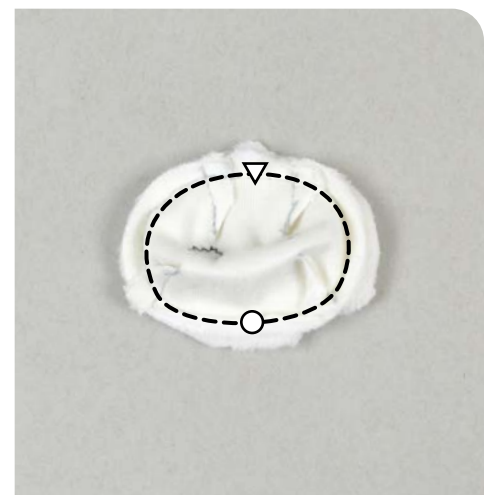
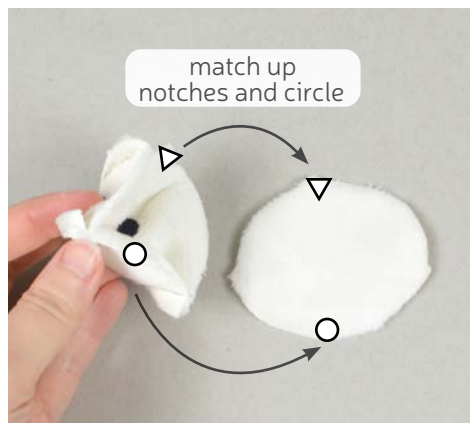


28. SEW THE MUZZLE DARTS

- Grab your **MUZZLE** piece (J). Note the tiny wedge shapes around the muzzle piece. These are **darts**. Fold the muzzle fabric along the point of one **dart** to match up the slanted lines.
- Sew the dart by starting at the opening and curving into the fold of the fabric.
- Repeat sewing the remaining darts on the muzzle piece for 4 **darts** total.

- Grab your **MUZZLE BASE** piece (K). Note the **notch** markings on both the **MUZZLE** and **MUZZLE BASE**. Match up the **notches** for these pieces with right sides facing. The **circle markings** will also match up. Pin the muzzle all the way around the shape.


- Sew the muzzle to the muzzle base all the way around



29. SEW THE MUZZLE

sew desu ne?

| WWW.CHOLYKNIGHT.COM |




cut through
muzzle back only




stuff
lightly

30. STUFF THE MUZZLE

- To turn the muzzle right side out, cut a small slit into the center of the **MUZZLE BASE (K)**. Be sure to cut through one layer of fabric only.
- Turn the muzzle right side out through the opening.
- Stuff the muzzle until it takes shape and no longer has any wrinkles in the fabric.



place muzzle
beneath eyes



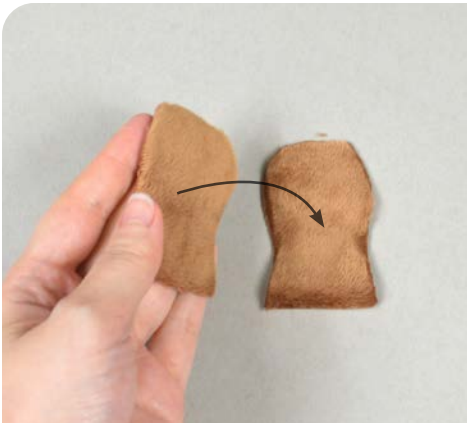
stitch around
base of muzzle

31. ATTACH THE MUZZLE

- Align the muzzle over the face of your giraffe. Place it with the cut side down just barely covering the corners of the eyes. Hold the muzzle in place by sticking pins down into the base of the muzzle and through the head of the giraffe.
- Stitch the muzzle to the face around the base using a ladder stitch.

sew desu ne?

| WWW.CHOLYKNIGHT.COM |

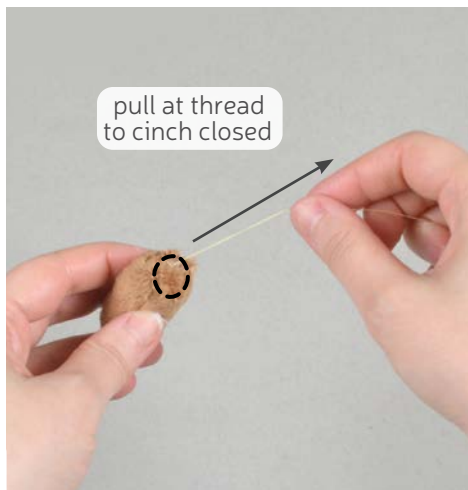


32. SEW THE HORNS

- Grab your **HORN** pieces (L). Take two of them and align them with right sides facing and raw edges matching up.
- Sew them together around the curved edge. Leave the straight edge free for turning the horn right side out later.
- Trim the excess seam allowance around the curves of the horn to reduce bulk. Repeat with your remaining horn pieces for two horns total. Turn the horns right side out through the opening.



33. STUFF THE HORNS



- Stuff the **HORNS** semi-firmly with stuffing, just enough so they take shape.
- Thread a hand sewing needle and knot the end. Sew a gathering stitch around the opening of the horn, about 1/4" in from the edge. Pull at the gathering thread to cinch the horn closed.

sew desu ne?

| WWW.CHOLYKNIGHT.COM |

- a. Place the cinched end of the **HORN** onto the giraffe's head between the ear and **top HEAD FRONT dart**. Center it along the head seam.
- b. Ladder stitch the horn to the head around the base.



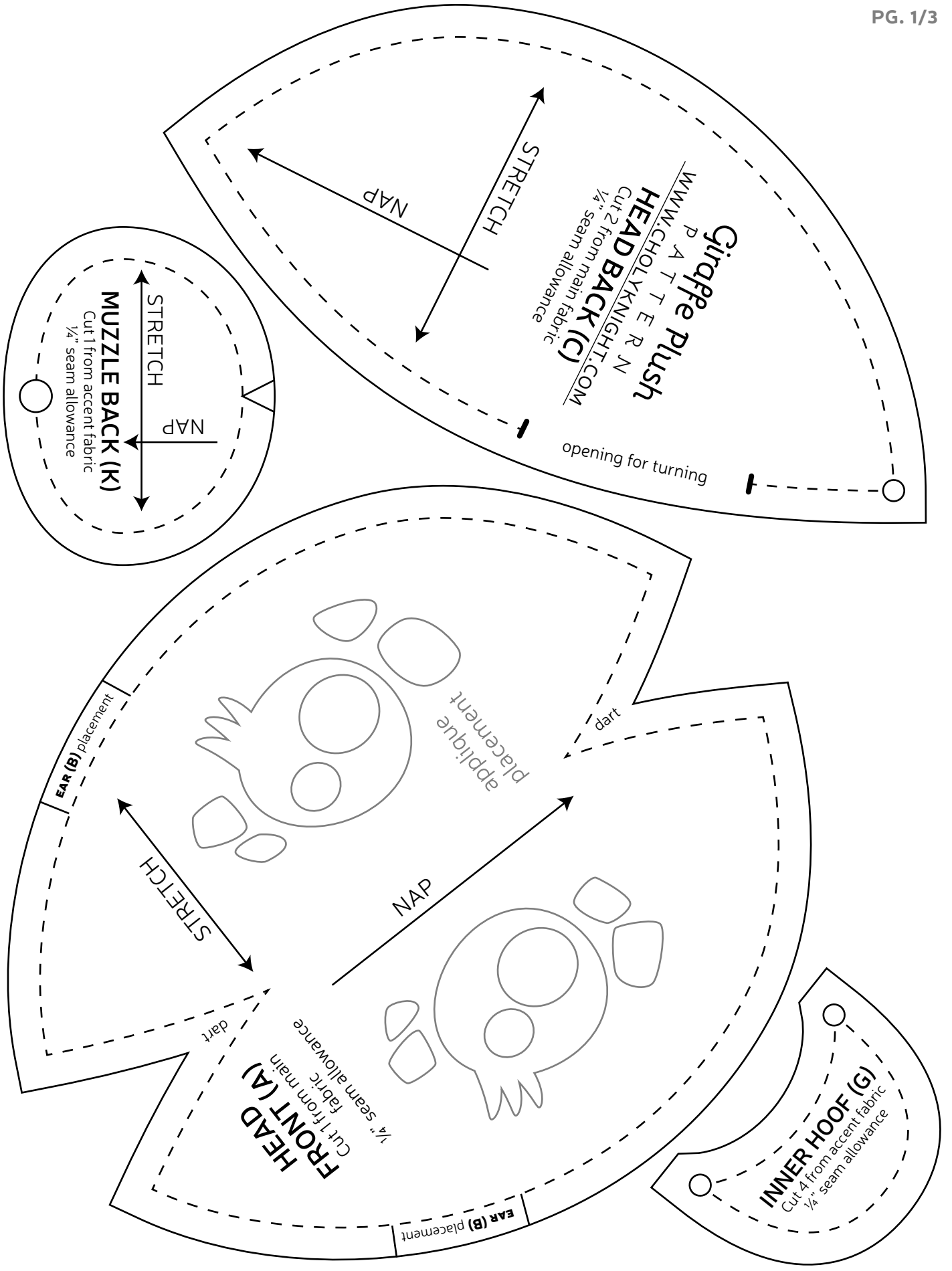
34. ATTACH THE HORNS

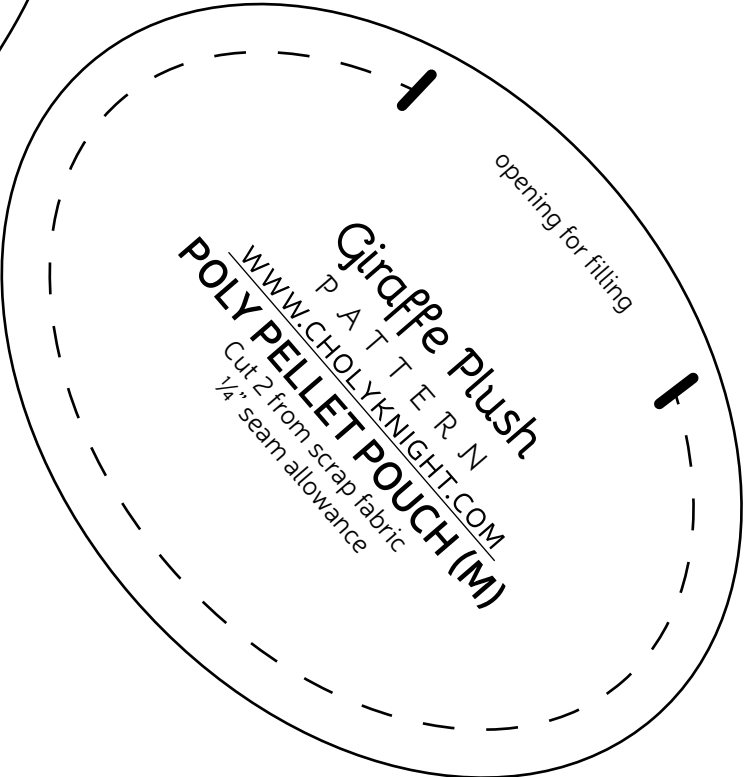
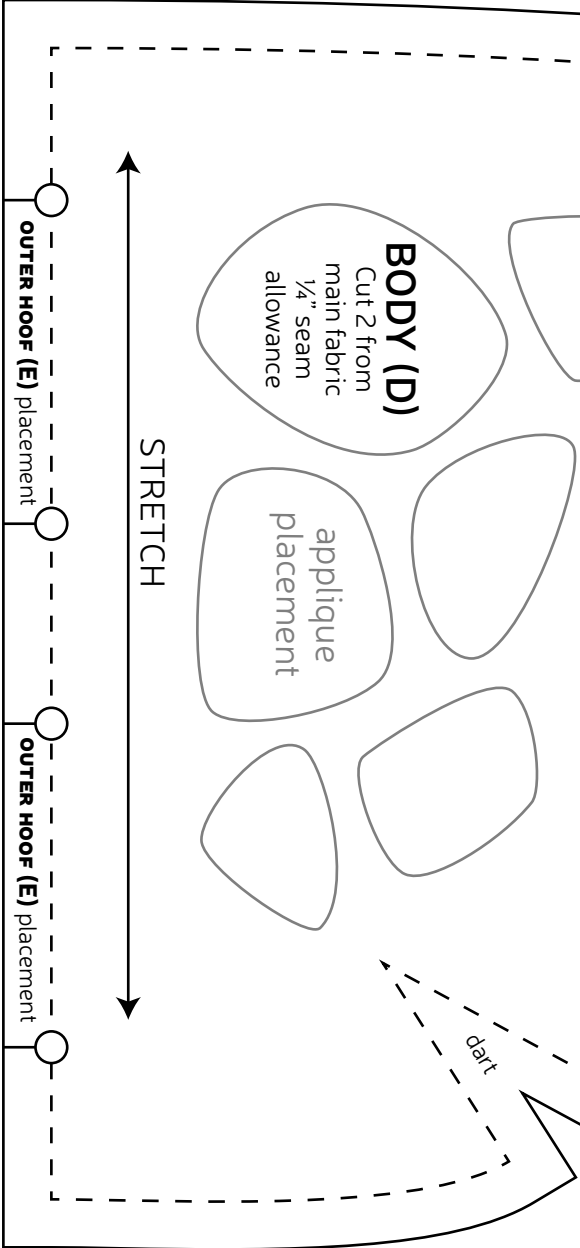
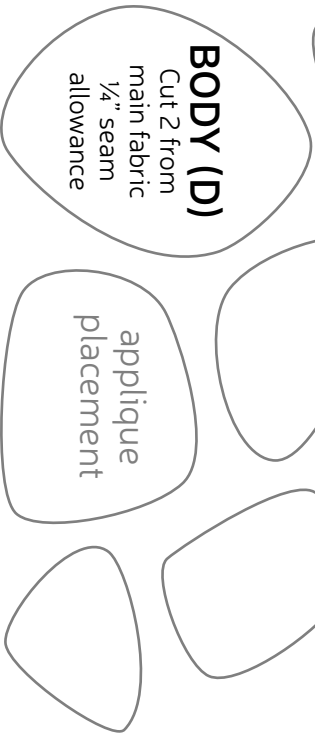
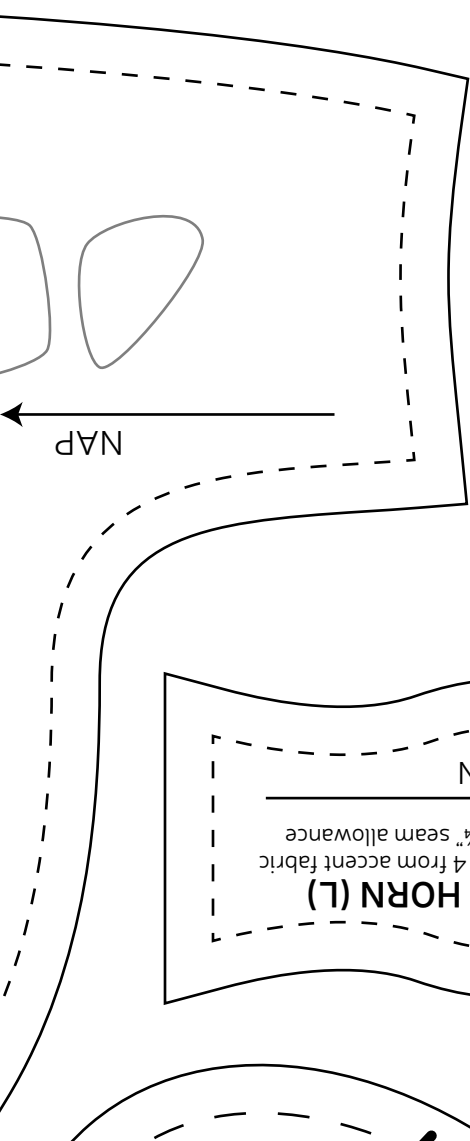
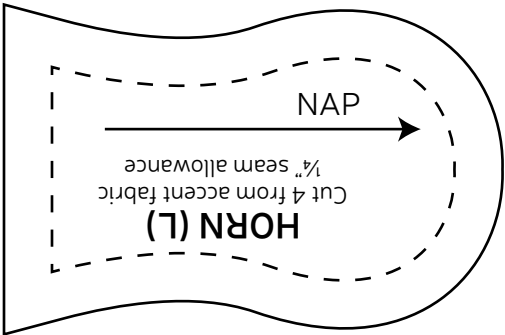
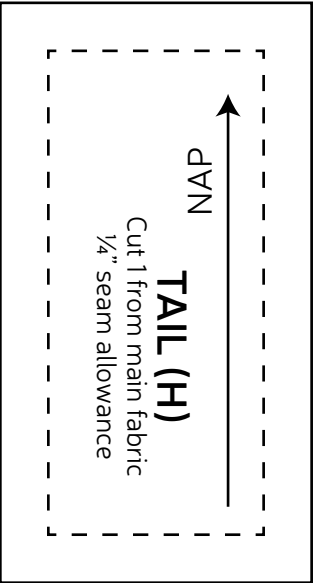


CONGRATS!
This completes your
plush! Now give it a
big hug!

sew desu ne?

| WWW.CHOLYKNIGHT.COM |





Giraffe plush
P A T T E R N
WWW.CHOLYKNIGHT.COM
POLY PELLET POUCH (M)
Cut 2 from scrap fabric
1/4" seam allowance

